



Broxtowe
Borough
COUNCIL

Broxtowe matters

Winter 2022

In this issue **Climate Change**



Cost of living support
Page 4



**Christmas Lights
Events**
Page 8



**Boosting our town
centres**
Page 14



Members of Broxtowe Youth Voice – Nottinghamshire County Council Youth Service at a recent Green Festival event.

Together we can make small changes to make a big difference

Find out about how we can all work together to reduce our carbon footprint on Page 10.



Live well, *Your* way

with care in the comfort
of your own home

It's the place you know best. If you want to stay living comfortably at home, we can help you make that choice an informed one.

Home Instead Nottingham, The Lookout,
4 Bull Close Road, Nottingham, NG7 2UL

T: 0115 9226116

E: information@nottingham.homeinstead.co.uk




**If you're compassionate,
caring and love people
then *You Can Care***

Join an award-winning
company doing amazing things
to help people live well
and comfortably at home.

Join our team

0115 9226116

www.homeinstead.co.uk/nottingham



Each Home Instead franchise office is
independently owned and operated.
Copyright© Home Instead 2022

Getting in touch

- Web** visit www.broxtowe.gov.uk to pay and apply for services online
- Email** customerservices@broxtowe.gov.uk
- Call** 0115 917 7777 other useful contacts can be found on the back page
- f** /broxtoweboroughcouncil
- @broxtowebc**
- /BroxtoweBC**



Sign up now at www.broxtowe.gov.uk/emailme

Editorial: Broxtowe Borough Council's Corporate Communications Team

Print: Systematic Print Management

Distribution: Royal Mail

Cost: 22p per copy

Broxtowe Matters is printed on environmentally friendly paper, please recycle it after reading.

Advertising is sourced by Spot On Media Ltd and the Council does not endorse any of the products or services advertised.

We welcome your comments and views – just get in touch at press@broxtowe.gov.uk or call 0115 917 3231.

This document is available in large print upon request.

ਸੇਵਕ ਤੁਸੀਂ ਇਹ ਲੀਫਲੈਟ ਕਿਸੀ ਹੋਰ ਭਾਸ਼ਾ ਜਾਂ ਫੋਰਮੈਟ ਵਿੱਚ ਚੋਣਾ ਚਾਹੁੰਦੇ ਹੋ ਤਾਂ ਕ੍ਰਿਪ ਕਰਕੇ 0115 9177777 ਤੇ ਸਾਡੇ ਨਾਲ ਸੰਪਰਕ ਕਰੋ।

如果你需要此傳單用其他的形式或文字寫成，請撥電話 0115 917 7777 與我們聯絡。

اگر آپ چاہتے ہیں کہ یہ لیف لیٹ آپ کو اردو زبان میں مہیا کیا جائے تو براہ مہربانی فون نمبر: 0115 9177777 پر رابطہ کریں۔

If you need this leaflet in other formats or languages contact us on 0115 917 7777

Introduction



The way in which our community came together to pay their respects to Queen Elizabeth II was incredibly humbling.

Her death is a loss felt across our Borough, our nation and the world and her sense of duty, commitment and service knew no bounds. We extend our best wishes to His Majesty King Charles III, as he commences his new role and look forward to sharing information about the Coronation once we have more details.

The Government has confirmed that a £1.14 billion devolution deal is on offer for the East Midlands, covering Derbyshire, Nottinghamshire, Derby, and Nottingham in order to better tailor local spending and budgets to the needs of people in our local communities.

If the devolution deal is formally approved, the Government will pass new legislation and a new elected Regional Mayor would be elected in May 2024 to focus on wider issues like transport, regeneration and employment.



Ruth Hyde OBE
Chief Executive

This would not mean scrapping or merging local councils, which would all continue to exist as they do now and would still be responsible for most public services in the area. More information can be found at www.gov.uk/government/publications/east-midlands-devolution-deal



Councillor Milan Radulovic MBE,
Leader of the Council

We know that the rising cost of living is a serious concern for many people at the moment. The Council is working with partners, including Citizens Advice to offer a joined up approach to supporting anyone who is struggling to get by.



Councillor Steve Carr, Deputy Leader of the Council

Please don't struggle alone. Turn to page 4 for some dedicated advice about the help and support that is available.

Also in this issue...

Community News
P4



Environment
P10



How We're Providing
Value For Money
P12



Business Growth
P14



Housing
P16



Health
P18



Community Safety
P20





Cost of living special

If you are worried about the rising cost of living, help and support is available.

Maximising your income / benefits



Universal Credit - If you are working age and already claim benefits, you may be better off if you move to Universal Credit www.gov.uk/universal-credit

Pension Credit - Help with Council Tax and free TV licences over the age of 75. Nottinghamshire County Council is also offering additional support for those who currently receive Pension Credit. To check if you, or a family member might be entitled, visit www.gov.uk/pension-credit-calculator

Housing Benefit - If you are pension-age, live in rented accommodation and are on a low income you may be able to claim help with your rent via www.broxtowe.gov.uk/benefits

Council Tax Support - If you pay Council Tax and are on a low income you may be able to claim Council Tax Support www.broxtowe.gov.uk/counciltaxsupport

Discretionary Housing Payments - If you are in private rented or Housing Association accommodation and your rent is not covered in full by Housing Benefit or the Housing Element of Universal Credit, the Council has limited funding to support some shortfalls www.broxtowe.gov.uk/discretionaryhousingpayment

For more general benefit advice, visit www.gov.uk/welfare or www.nottinghamshire.gov.uk/care/benefits-finance/benefits

Housing

If you need other housing advice or are homeless or at risk of being made homeless, the Housing Options Team can provide help and support. You can contact them on **0115 917 7777** or visit www.broxtowe.gov.uk/housingadvice



If you are experiencing difficulties with your household energy costs, please discuss this with your provider in the first instance.

Useful information regarding grants and benefits available to help pay energy bills is available from Citizens Advice at www.citizensadvice.org.uk/consumer/energy

Severn Trent can also offer support with water payments www.stwater.co.uk/my-account/help-when-you-need-it

Visit www.broxtowe.gov.uk/energysavingtips for tips on saving energy in your home.



Managing your money

If you are struggling with managing your money or need advice about financial support and benefits, the following organisations may be able to help.

The important thing is not to delay in making contact so you can get the advice you need.

Citizens Advice Broxtowe

www.citizensadvicebroxtowe.org.uk or call

Adviceline: 0800 144 8848 Textphone: 0800 144 8884

Turn2Us - a national charity who provide financial support to help people get back on track www.turn2us.org.uk

Money Advice Service - Free and impartial money advice www.moneyadviceservice.org.uk

Council Tenants – book an appointment with our Financial Inclusion Officer who can help you with budgeting, benefits and accessing funding. Call **0115 917 7777**.

The Government have a dedicated website with details of all the help available for households www.helpforhouseholds.campaign.gov.uk



Broxtowe Borough Council

Useful addresses and telephone numbers

COUNCIL SERVICES

Council Offices, Foster Avenue, Beeston, NG9 1AB
 Kimberley Depot, Eastwood Road, Kimberley, NG16 2HX
All above offices Tel 0115 917 7777 **www.broxtowe.gov.uk**

D.H. Lawrence Birthplace Museum,
 8a Victoria Street, Eastwood,
 NG16 3AW
Tel 0115 917 3824

COUNCIL HOUSING REPAIRS

Daytime and out of hours **Tel 0115 917 7777**

OTHER USEFUL SERVICES, ADDRESSES & TELEPHONE NUMBERS

Citizens Advice Broxtowe
 Council Offices
 Foster Avenue, Beeston NG9 1AB

Citizens Advice Broxtowe
 Library & Information Centre
 Wellington Place, Eastwood
 NG16 3BG

Tel 01773 768 363
www.citizensadvicebroxtowe.org.uk

Nottinghamshire County Council
Tel 0300 500 8080

Age UK
Tel 0800 169 6565

Consumer Direct
Tel 08454 040506

NHS Advice
 24 hour Nurse & Health Advice
Tel 111

Eastwood Volunteer Bureau
 Wellington Place (rear of Library)
 Eastwood, Nottingham NG16 3BG
Tel 01773 535 255

The Helpful Bureau
 Carnegie Civic and Community
 Centre
 Warren Avenue, Stapleford,
 Nottingham NG9 8EY
Tel 0115 949 1175

Nottinghamshire Police
 (Non-emergencies)
Tel 101

Crimestoppers
Tel 0800 555 111



Bramcote Leisure Centre

Derby Road, Bramcote,
 NG9 3GF
Tel 0115 917 3000

Chilwell Olympia

Bye Pass Road, Chilwell,
 NG9 5HR
Tel 0115 917 3333

Kimberley Swim & Gym

Newdigate Street, Kimberley,
 NG16 2NJ
Tel 0115 917 3366
www.lleisure.co.uk

Contact your local councillor, all details available at **www.broxtowe.gov.uk/yourcouncillor**

ہمارے کونسلر کے ساتھ رابطہ کرنے کے لیے ہمیں 0115 917 7777 پر
 سیدھے کال کریں۔

如果你需要此傳單用其他的形式或文字寫成，請撥電話 0115 917 7777 與我們
 聯絡。

اگر آپ چاہتے ہیں کہ یہ لیفٹ آپ کو اردو زبان میں مہیا کیا جائے
 تو براہ مہربانی فون نمبر: 0115 917 7777 پر رابطہ کریں۔

If you need this leaflet in other formats or
 languages contact us on 0115 917 7777

TYPETALK - TEXT DIRECT

Typetalk's purpose is to bring the benefits of the telephone network to
 deaf, deafblind, deafened, hard of hearing and speech-impaired people.

Managed from a state-of-the-art centre, Typetalk's highly trained operators
 understand the special requirements of its customers
 and provide a warm, friendly service in complete confidentiality.

For Broxtowe Borough Council telephone **18001 0115 917 7777**.



Follow Broxtowe with social media

Keep up-to-date with the latest Council news, jobs and activities in your area by following Broxtowe Borough Council
 on your favourite social networking sites or sign up to the email alerts.

www.broxtowe.gov.uk/socialmedia



Broxtowe Borough Council
 Foster Avenue, Beeston,
 Nottingham, NG9 1AB
 Tel 0115 917 7777
www.broxtowe.gov.uk

South Nottinghamshire
 Community Safety Partnership
 0115 917 3492

Broxtowe Borough Partnership
 Tel 0115 917 3492
www.broxtowepartnership.org.uk



Broxtowe
Borough
COUNCIL

BROXTOWE

Christmas LIGHTS SWITCH ON EVENTS

STAPLEFORD

26TH NOVEMBER 4.30-6.30PM
Walter Parker VC Square
Victoria Street Car Park NG9 7AR

Light Switch On at 5.30pm
by the Christmas Tree

Fireworks at 6.30pm

Santa's Grotto 2.30pm - 5.45pm
Christmas Fair from 12pm
with Festive Stalls

EASTWOOD

29TH NOVEMBER 6-8PM
Nottingham Road
Eastwood

Light Switch On at 7pm
at Eastwood Library

Fireworks at 8pm

Santa's Grotto 5:30pm - 8pm
at D.H. Lawrence Museum

BEESTON

3RD DECEMBER 4.30-6.30PM
Beeston Square, High Road,
Foster Avenue Car Park NG9 1AB

Light Switch On at 5.30pm
by the Christmas Tree

Fireworks at 6.30pm

Santa's Grotto 2.30pm - 5.45pm
at Broadgate Park
Christmas Market from 12pm

For further information visit www.broxtowe.gov.uk/events

Advanced Eye Exams for

- AGE RELATED MACULAR DEGENERATION (AMD)
- GLAUCOMA ● POOR SIGHT

By Dr. S A Janjua BSc(Hons) MCOptom DOptom Prof Cert Glau Prof Cert LV
Prof Cert Med Ret DipSV Director & Doctor of Optometry

Brand new, state-of-the-art equipment at John Flynn Opticians in Beeston is now facilitating the very best diagnostic capabilities to ensure the best eyecare in the country. Optometrist Dr. Janjua's new equipment provides hospital-standard insight into your health and is one of just a handful of such machines anywhere in the UK...

Foresight. Hindsight. Insight. It's quite clear how much importance we place on sight. We've all come to recognise that a first-class optometrist will not only make your vision sharper, as a result of the prescription they determine you need, but will also help to assess your overall health, using your eyes to as an indicator of your general health. As eye-care technology has finessed, some optometrists have invested in decent technology, but some diagnostic equipment remains the preserve of dedicated eye-care departments in specialist hospitals such as Moorfields, Manchester Royal Eye Hospital and Nottingham's Queens Medical Centre. Those specialist facilities and teaching hospitals have previously been able to boast the best diagnostic technology, which High Street opticians could only look upon with envy... that is, until now. Beeston's **John Flynn Opticians**, established in 1938, recently took delivery of its new Heidelberg Spectralis machine which is – without exaggeration – the best OCT scanner available for any eye-care practitioners and one which most dedicated hospital eyecare departments would covet. It's one of just a handful of machines here in the UK and as Dr. Janjua says, it's the gold standard for dedicated eye hospitals, let alone a High Street optician, providing him with unprecedented accuracy and clarity when making a diagnosis.

An OCT (Optical Coherence Tomography) machine is used to take a 3D scan of the eye to allow a specialist to assess the health of the optic nerve, macular and to detect and monitor the progression of conditions like age-related macular degeneration (AMD) and glaucoma. **John Flynn Opticians'** new machine, though, builds on this technology to create 4D imagery accurate to just a single micron – one hundredth of the width of a human hair.



Above: **John Flynn Opticians new Heidelberg Spectralis OCT machine is one of the few in the UK, and is best in class, offering hospital-standard diagnosis of eye health for the optician's patients.**

The system also uses artificial intelligence to track the exact position of successive scans, overlaying them precisely to check changes over successive months or years. Fast, contact-free and painless, the system can also send images to hospital departments for other clinicians to review in the event of a referral.

"We can use the technology to examine tiny details that help us to detect eye disease at the earliest stages, reducing the risk of sight loss and improving our patients' lives," says Dr Janjua.

Naturally technology is nothing without expertise, and so Dr. Janjua is committed to interpreting the results of a scan and explaining findings in an accessible way. With the highest quality diagnostic information comes the most accurate prescription, and alongside the very best ophthalmic lenses from across the industry – Zeiss, Nikon and Hoya – the practice's state-of-the-art equipment is crucial, but only when used alongside the very best diagnostic skill and the provision of quality ophthalmic lenses and luxury frames.

The result is great service, clear vision and true peace of mind; a holistic service that's clearly better at providing quality eyecare.

John Flynn Opticians provides eye examinations, prescription eyewear and contact lenses from its practice on **Devonshire Avenue, Beeston, NG9 1BS**, call **0115 925 5051 / 0115 939 2421** or see **www.johnflynnopticians.co.uk**.

**DON'T
JUST TAKE
OUR WORD
FOR IT...
READ WHAT OUR
CUSTOMERS
HAVE
TO SAY...**

"Just picked up my third pair of specs from Flynns. I've used them for years and cannot fault them, from the excellent care with my sight test to Annette and Wendy who are on hand to advise, make sure your specs fit and sit properly and just generally make you feel welcome. Nothing is too much trouble. Thank you all.
Until my next visit."

E. Taylor

"I cannot speak highly enough of Dr Janjua and all his team at Flynn Opticians in Beeston. Due to wrong prescriptions in the past going to him changed my life. Not only do you get the best product on the market and expert advice, everybody is so helpful and kind. I would not go anywhere else."

J. West

"I'd heard that the glasses were great quality and the service was great at John Flynn Optician. The staff have been very helpful and gave me all the facts I needed. I love the personal touch and that you don't have to ask for help – it's just given. I love my new glasses – the style, the colour, the quality – everything. Dan and Annette have been brilliant from the minute I walked in the door. They are very friendly and provided perfect service in every way. I will be coming back and will share my experience with others."

L. James



Purveyors of Luxury eyewear since 1938 ● Clinical Eyecare ● Quality Eyewear



Open Monday to Friday from 9am to 5:30pm. Saturday 9am-5pm

John Flynn Opticians welcomes the registration of new patients and parking is available in the practice's own car park.

**Telephone 0115 925 5051 / 0115 939 2421 to make an appointment.
enquiries@johnflynnopticians.co.uk www.johnflynnopticians.co.uk**

Want to stay up to date with the latest news and arrivals? Why not follow us on **Instagram** and **Facebook @johnflynnopticians**

**0115 925 5051
0115 939 2421**





Decision Making In Action

Council Committees make decisions about services or have delegated powers to make decisions based on law.

Most committees are public meetings so members of the public are welcome to attend. At certain meetings, like Full Council Meetings, members of the public can also ask questions by prior arrangement.

Agendas, minutes and meeting dates are published on our website at www.broxtowe.gov.uk/committees and decisions for many of the committees are shared on our Twitter account [@broxtowebc](https://twitter.com/broxtowebc).

You can attend meetings in person at the Council Offices in Beeston or you can view a live stream of the meeting whilst it is taking place on our YouTube channel www.youtube.com/BroxtoweBC

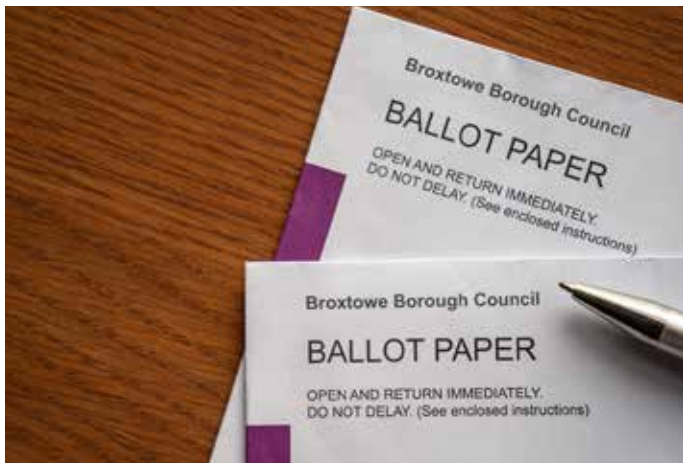


Your vote is your voice – don't lose it

Make sure your registration details are up to date so you don't lose your voice on decisions that affect you.

With Borough and Parish elections taking place across Broxtowe on Thursday 4 May 2023, this is an important opportunity to make sure you can take part. If you aren't registered to vote, or your details have changed, you can complete an application by visiting www.gov.uk/register-to-vote.

If you have any questions relating to electoral registration, please contact elections@broxtowe.gov.uk or call **0115 917 3276**.



Literacy Volunteers



Volunteers are needed to help primary school children with their reading and communication skills. You will read and play word games with selected children on a one-to-one basis, to give them confidence and help them enjoy reading and communicating.

Volunteers need to be able to commit to visiting a school on the same morning or afternoon each week (for at least a year). Training and ongoing support is provided. Volunteers should like children, enjoy reading, be patient, flexible and reliable. You will be vetted through the Disclosure and Barring Service.

If you are interested, please call **0115 876 5474** or email contact@literacyvolunteers.org.uk



Carer Friendly Quality Mark presented to Inspire: Culture, Learning and Libraries

Nottinghamshire Carers Association (NCA) delivered Carer Awareness training to 180 library staff over 2 sessions, and also to over 20 key Adult Learning staff and tutors online. That's staff across all 63 Inspire Libraries and Inspire Adult Learning areas in Nottinghamshire, who are now more Carer aware, and able to support and signpost Carers in a more proactive & understanding way. Inspire delivers culture, learning and libraries on behalf of Nottinghamshire County Council.

The Libraries have been developed to accommodate Carers in a more accessible and 'Carer-Friendly' way, and resources put in place to support Carers across all libraries and learning.

The NCA 'Carer Friendly Quality Mark' was awarded on 22 August to Inspire: Culture, Learning and Libraries for their continued commitment to help support Carers.



Community Clean Teams

Join our Community Clean Team of individuals, community groups, schools and businesses who are taking collective responsibility for keeping the Borough clean and tidy and encouraging everyone to recycle more.

If you'd like to organise an event, we can help by loaning equipment. We will also arrange the collection of the waste when the event is finished.

Visit www.broxtowe.gov.uk/cleanandgreen for more information, including help on setting up your event.



Calling all Village Hall Management Committees

Is it time to put some unity back into your community? Would your Village Hall like help facilitating a regular event where people can come together to enjoy good food and drink, access useful information and build connections in a safe and welcoming space?

We know encouraging locals to engage can be a challenge. The Rural Communities Action Network RCAN will work with management committees to identify community

need and help host an event that's right for your community.

RCAN are offering four rural communities the opportunity to receive FREE support to design, develop and facilitate an event to help their communities come together to Talk Learn and Connect.

Register your interest today: email jcarterdavies@rcan.org.uk or call 0115 697 5800





Climate Change - together we can make small changes to make a big difference



Earn discounts and prizes for completing every day activities with Green Rewards.

Green Rewards is an online platform designed to help Broxtowe residents reduce their carbon footprint, which in turn helps to tackle climate change.

Users are rewarded 'Green points' for undertaking environmentally friendly actions - these are then logged via the Green Rewards app or web platform.

Every month there are two Broxtowe winners, winning a £20 voucher for the following retailers: **Marks and Spencer, Love2Shop and many more.** The first winner is the user that has earned the most points that month and the second winner is drawn at random from all of the platform users.

You can also help give back to your local community by earning points – **every six months a ward is selected for earning the most points.** The winning ward will be able to choose a green project for their ward, such as wildflower annuals, hedge planting or tree planting.

Plus, you can get a **15% discount on Nottingham City Transport adult and group day tickets**, just for being a Green Rewards user.

Sign up at www.notts.greenrewards.co.uk or download the app through the Apple or Google Play Stores.



Sign up for our Environment emails to find out:

- what you can and can't recycle
- what can go in your garden waste bin
- what you can do to reduce your carbon footprint
- how you can help Broxtowe to tackle climate change
- and more!

Visit www.broxtowe.gov.uk/emailme, enter your email address and select the 'Environment' topic from the list.

EMAIL ME



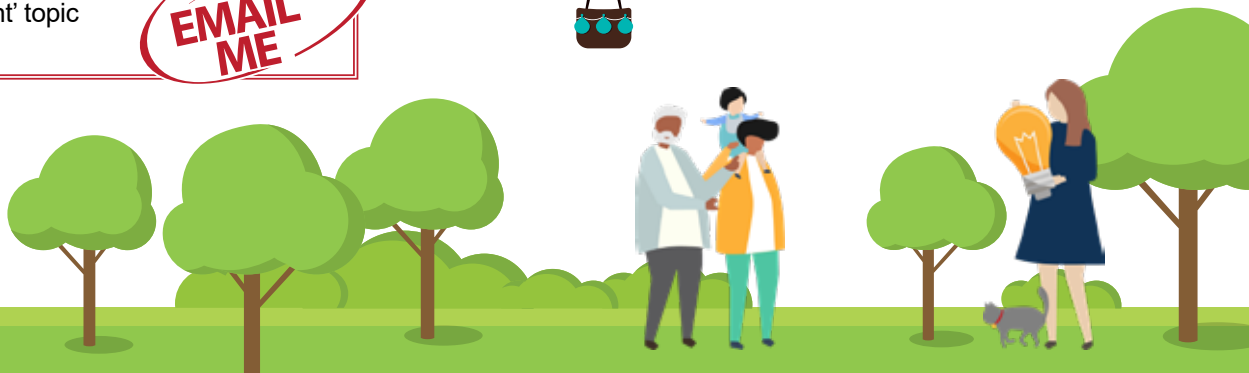
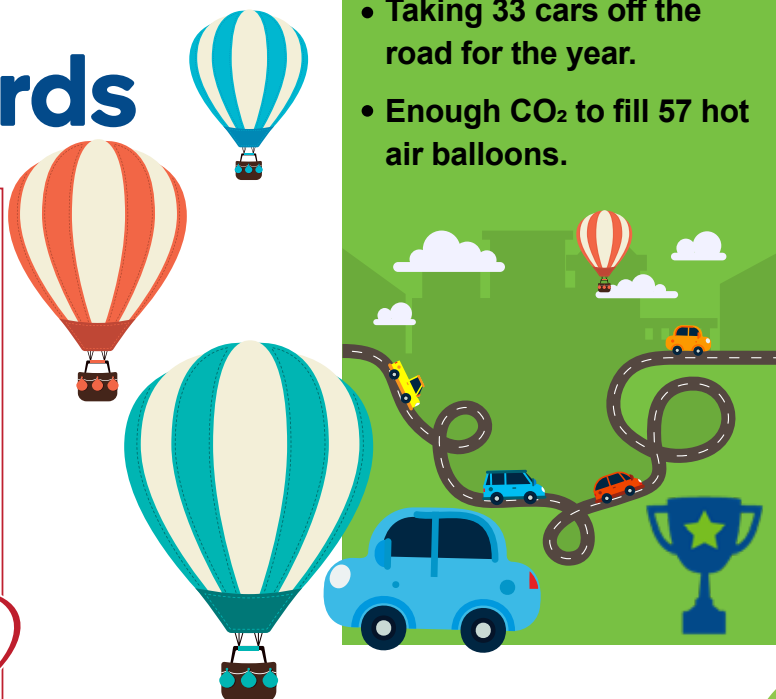
You're helping to make a difference!

Since the platform launched in 2021, Broxtowe users have:

- Completed 24,456 actions.
- Saving 57 tonnes of CO₂e.

That's equivalent to:

- Taking 33 cars off the road for the year.
- Enough CO₂ to fill 57 hot air balloons.





3,357 trees were planted in the 2021/22 financial year, including 500 given to residents to plant in their own gardens.

Since 2009, more than 125,000 trees have been planted – that's more than one for every resident in the Borough!

Going electric

The Council has recently added a ninth electric vehicle to its fleet to help reduce our carbon footprint.

The new van, which is being used by the Council's Playground Inspector, Cliff Carlin has a range of 134 miles on a full charge. We will save approximately 1,500 litres of fuel per year thanks to the new van which in turn saves us 2.5 tonnes of carbon. That's the same as just over two return flights from Paris to New York.

Electric vehicle drivers can also make use of 32 charging points in the Borough.



- 8 in Beeston - Portland Street car park
- 12 in Stapleford – 8 at Cliffe Hill Avenue car park and 4 at Victoria Street car park
- 8 in Eastwood - Victoria Street car park
- 4 in Kimberley - Victoria Street car park

The points can be used via an app or RFID card. Owners of a D2N2 card

also get a reduced tariff of 20p per KW with D2N2 charge points.

The chargers located in Victoria Street car park, Stapleford, are brand new rapid chargers which deliver up to 50KW of power.

Find out more at www.broxtowe.gov.uk/electricvehiclecharging

New park opens in Chilwell

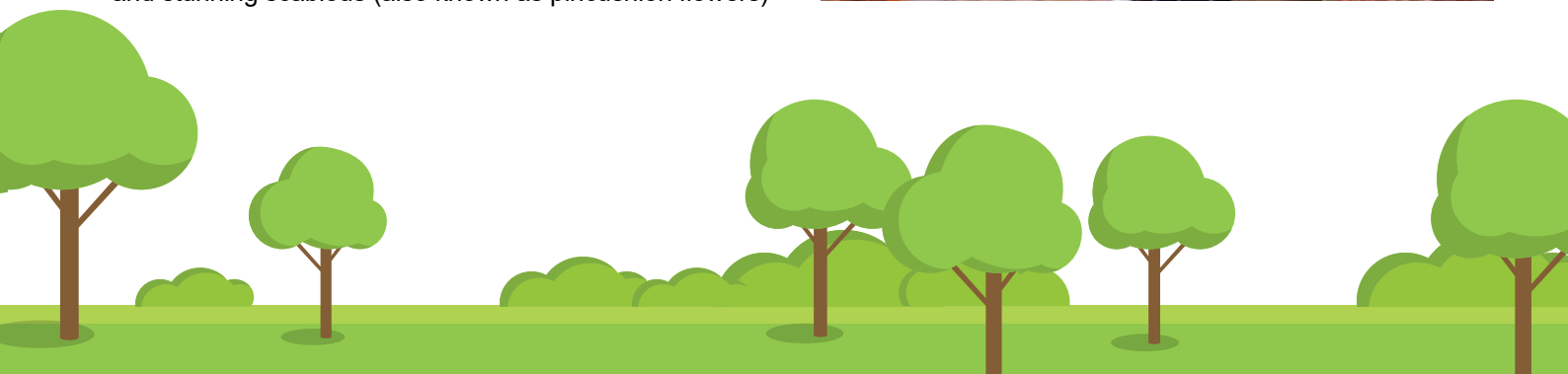
A new park has opened opposite Ghost House Lane in Chilwell, providing 5,000 square metres of green space for local residents to enjoy.

The 'pocket park' also includes seating and a picnic area. It is well known locally, following a series of strange happenings that led people to believe the area was haunted.

Wildflowers, which were chosen as a community prize by users of the Green Rewards platform, were also planted at the site, with the help of pupils from local primary schools.

Perennial native British wildflowers including oxeye daisies and stunning scabious (also known as pincushion flowers)

were chosen as not only because they look beautiful once in bloom, but they are also excellent pollinators for bees and other insect species.





How we're providing value for money

2021/22 Annual Report Summary

This summary outlines how we spent the money received from the Council Tax you pay, business rates, Government grants and other income during the 2021/22 financial year.

General Fund

How the money was raised

£5.9m from Council Tax

£4.7m from our share of Business Rates

£0.12m other grants

Total Income: £10.7million

Day to day running costs of Council services (except Council Housing) e.g. salaries, transport, general office running costs and income from fees and charges.

The Council spent a net £0.7m less than it received in funding and £1.9m less than it planned to spend.

The Budget Challenge

Government funding was provided to local authorities to help offset the reduction in council tax received from tax payers and business rates received from ratepayers as a result of the COVID-19 pandemic. A proportion of this funding, amounting to £4.4m, that had been set aside in the previous year to offset the continued deficit in future years was brought back into general balances.

Where the money was spent



Resources

Income exceeded expenditure in 2021/22 by £0.9m. Resources relates primarily to the expenditure and income (including recharges) associated with the Council's central support functions.

Where does your Council Tax go?

Council Tax is set annually and the money you pay is used to fund local services. Around 8% of your Council Tax goes towards funding services provided by Broxtowe Borough Council. The rest goes to Nottinghamshire County Council, Nottinghamshire Police, Nottinghamshire Fire and Rescue and your Parish Council.

We collect Council Tax for all of these organisations but each is responsible for deciding its own rates. Based on a Band D equivalent:

£1,644.09 goes to Nottinghamshire County Council.

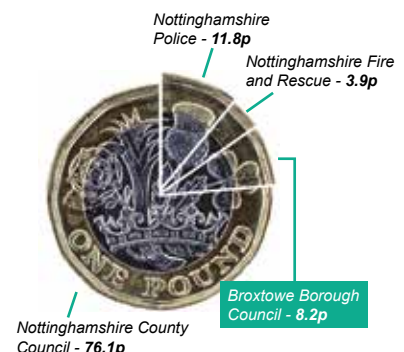
£254.25 goes to Nottinghamshire Police.

£176.85 goes to Broxtowe Borough Council.

£84.57 goes to Nottinghamshire Fire and Rescue.

Parish precepts vary between each Parish.

Please note this is based on your 2022/23 Council Tax.



Budget Consultation 2023/24

Open until Wednesday 30th November 2022.

Complete the online form at www.broxtowe.gov.uk/budgetconsultation

Alternatively send your comments in writing to Finance Services - Budget Consultation, Broxtowe Borough Council, Foster Avenue, Beeston, NG9 1AB.

Respondents who provide their name and contact information will be entered into a prize draw to win one of 6 £50 Love2Shop vouchers.



STORE



More detailed information about the Council's finances can be found in the Annual Statement of Accounts at www.broxtowe.gov.uk/annualaccounts or email our Finance Team on finance@broxtowe.gov.uk.

Capital Programme

Spending of a one-off nature on improvement projects such as housing schemes, vehicles, equipment and software. This included £2.4 million on the housing modernisation programme, £2.2 million on gas heating replacement and £0.9 million on vehicle replacement.

How the money was raised

£6.5m from internal funds

£5.6m from new borrowing

£1.2m proceeds from the sale of assets

£0.9m from grants and contributions


Total Income:
£14.2 million


Where the money was spent


 **£9.8m** Council housing

 **£0.9m** Replacement vehicles

 **£0.7m** Grants towards affordable housing and improvements

 **£0.1m** Leisure Centre Improvements

 **£0.1m** ICT systems and equipment

 **£0.1m** Environmental Improvements

 **£0.1m** Parks and recreation

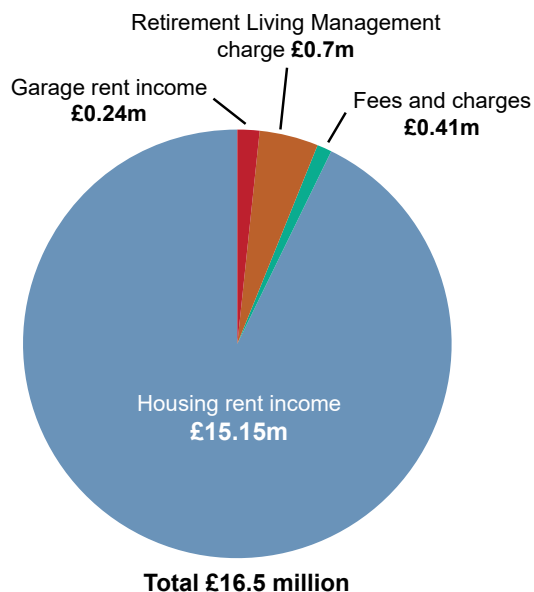
 **£2.4m** Other schemes

Expenditure
£14.2 million

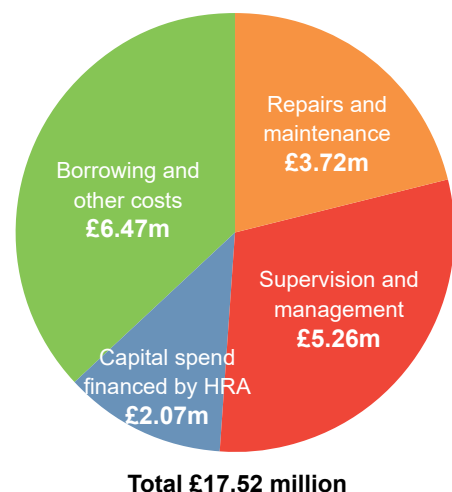
Housing Revenue Account

Day to day costs and income in respect of Council housing.

How the money was raised



Where the money was spent





Bright future ahead for Stapleford

Excitement is building in Stapleford as £21.1m of 'Towns Fund' regeneration projects get underway.

The Stapleford Towns Fund team has worked closely with local residents, workers and businesses to understand the challenges and aspirations of the town, and what it needs now, and in the future, to become a model for what a small town can achieve.

The team has developed six core projects, and following receipt of the funding from the Government's Town Deal fund earlier this year, it has been busy developing plans to bring these to life.

The projects include:

1. Community hub and young people's centre at Hickings Lane
2. Enterprise hub building
3. Library learning facility
4. Safer cycling scheme
5. Street improvement scheme
6. £1m Town Centre Recovery Grant Scheme

Demolition work has already started at TilesUK to make way for the first new building, a new £5m Enterprise hub building – a destination for independent food outlets with market space, office space and a community garden terrace.

For more information watch this short film or visit the [StaplefordTownsFund](#) Facebook page.



Beeston

In Beeston, two new food outlets have opened as part of the cinema development.

The Beeston Social opened its doors in June offering a coffee shop/restaurant/bar, a mini arcade with games such as air hockey, Guitar Hero, Sega Rally and even a fairground grabber!

Rassam's Creamery is due to open imminently. A luxury dessert parlour offering a 34-page menu of mouth-watering treats.

A new changing places toilet block has also recently opened and work has taken place to refurbish the old Argos block for internal refurbishment for future tenants.

A series of 'Friday18' live music events took place throughout the summer providing a weekly hour long performance from local musicians to entertain visitors and encourage them to try out local restaurants and bars afterwards.



Eastwood and Kimberley: Levelling Up Bids Submitted

Two bids have been submitted to the Government's Levelling Up Fund.

If successful, the £20m Eastwood bid will see delivery of projects including:

- New health and wellbeing hub including GP surgery, pharmacy, library, community swimming pool, boxing club and women's services.
- Low-carbon, energy-efficient community hub including dementia day care facility, healthy eating café, community garden, employability support, mental health support groups and health and fitness classes.
- Cycle Path Network.



In Kimberley, if successful the £16m bid would see the town boosted through:

- Town centre improvement project including new business and community hub in place of the existing parish hall, small business grants and lighting equipment.
- New industrial units on the site of the existing Digby Street football pitch.
- New sports facility at Swingate Farm.
- New cycle path network and an accessible Eastern Ramp at Bennerley Viaduct.

At the time of producing this newsletter, the Council was waiting to hear if these bids had been successful. The latest updates will be shared on our website, email bulletins and social media accounts.



UK Shared Prosperity Fund

Broxtowe will benefit from a £2.58m share of the UK Shared Prosperity Fund (UKSPF), which will take the place of old EU funding.

The money must be invested in communities and place, support for local businesses or people and skills.

For example, the Council plans to use UKSPF to support local businesses by:

- Supporting the existing offer for pre-start and start-up businesses such as 1-2-1 advice on business plans, marketing, intellectual property, direction to funding opportunities and adding advisors in Eastwood to mirror a successful service in Beeston.
- A new Broxtowe-specific business support worker.
- Support for existing SMEs including sharing bespoke business advisors and mentors with other local authorities.
- Free Borough-wide Research and Development service provided by partners, with a specialist in advanced manufacturing.
- Business grants with a potential focus on carbon net zero improvements, enhanced retail security and DDA improvements to buildings.

In addition, the Council's allocation will be used to support Communities and Skills. Communities investments include support for existing community groups and libraries, town centre events and financial advice regarding the cost of living crisis.

Skills investments are focussed on support to help those not in education, employment or training get closer to the labour market.

At this stage, the plans still need to be approved by Government. Please look out for more information soon.

Local Business?

You can get the latest updates on events, funding, training and support available to you by signing up to our weekly Business emails.

Visit www.broxtowe.gov.uk/emailme to sign up - simply enter your email address and select Business Support, Training and Skills from the list of topics.





Inham Nook pub site

The Council purchased the Inham Nook pub in 2022, as a site for housing development.

The pub was demolished in August and in September, planning permission was granted for 15 new homes, consisting of 12 houses and 3 flats. It is anticipated that the work will begin on site in Spring 2023, with completion a year later.

The new homes will be for rent and will be let to applicants on the Council's waiting list. Development of this site will help the Council meet its commitment to build 230 new Council homes by 2029, as set out in the Housing Delivery Plan.



Getting You Well for Work

The Council has partnered with Futures For You to deliver a comprehensive employment support initiative across the Borough.

If you are 15+, a resident of the Borough and are looking for support to gain employment, you may be eligible for Well for Work.

Well for Work can help with:

- Finding the perfect job for you.
- Qualifications, including English and Maths.
- Sector based training.
- Work programme assistance.
- Wellbeing and therapy services.
- Housing support, financial advice and assistance.

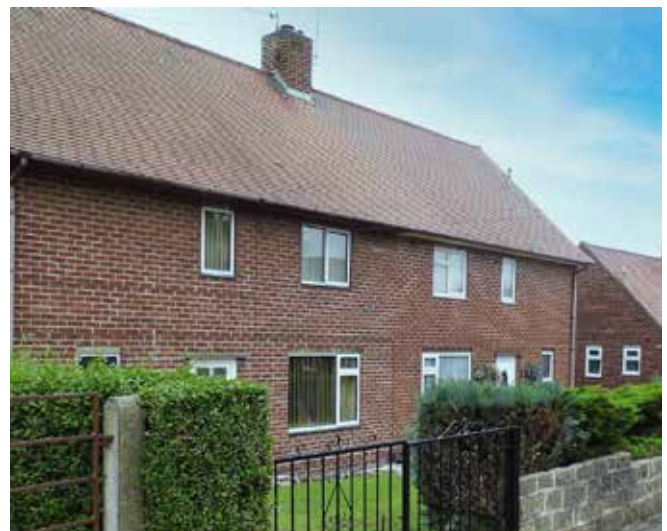
Find out more at www.broxtowe.gov.uk/wellforwork

Are you interested in selling your ex-Council property to the Council?

The Council is committed to increasing the number of Council houses so that we can help more people who apply to our waiting list. One of the ways we do this is to build new homes. We also buy properties back from people who previously purchased through the Right to Buy Scheme.

If you purchased more than five years ago, you do not need to pay back any of the discount you received.

For more information, or to arrange a home visit to start the process, please contact our Housing Acquisitions Officer on acquisitions@broxtowe.gov.uk or 0115 917 3623.





Giving you a Lifeline

What is Lifeline?

Lifeline provides round the clock support through a unit which plugs into your telephone socket.

It also includes a discreet alarm which you can wear either as a pendant or wristband. The Lifeline unit is linked to an accredited Control Centre who you can contact 24 hours a day, 7 days a week if you need assistance by simply pushing the button on the unit or your pendant.

If you wish to have a Lifeline unit, our dedicated Lifeline Co-ordinator will visit you to arrange the installation and explain how it works. It will take about an hour to install the unit.



How much does it cost?

Lifeline costs as little as **£3.93 a week** and payments can be paid by regular direct debit.

This weekly fee includes:

- Lifeline unit and pendant or wristband
- 24 hour UK-based monitoring
- Installation by our dedicated Lifeline Co-ordinator

If you'd like to enquire about Lifeline, please contact us:

By telephone: **0115 917 3358**

By email: lifeline@broxtowe.gov.uk

In addition to our standard Lifeline service we can also offer the Lifeline Plus package this includes:

Key Safe

Keysafes are secure metal boxes that can be attached to the exterior wall of a property and include a panel for entering a code. The owner keeps a spare key to their home inside. The keysafe can only be opened by someone who knows the programmed code.

We can supply and fit a Supra C500 key safe, which is one of only two police approved keysafes available. The keysafe belongs to you, after fitting.

The one off cost to supply and fit the Supra C500 key safe is £120.00 (inclusive of VAT)

Falls Detector

This lightweight and discreet falls detector is worn on a cord around your neck or wrist and will automatically trigger an alert to our monitoring centre if you've fallen over.

The cost of the Lifeline Plus Package is £5.90 per week (or £306.80 per annum) and includes the Standard Lifeline service.





Mental Health Support

Anyone can suffer from a mental health problem. If you are concerned about your mental health, or you are worried about a friend or relative, the first thing to do is speak to your GP.

If you feel that you are experiencing a mental health crisis and need to talk to someone urgently, call the mental health crisis line which is open 24 hours a day, 7 days a week, available to all ages, on Freephone **0808 196 3779**.

Other support

- Nottinghamshire Help Yourself - an online directory of local organisations on a range of topics, including mental health www.nottshelpyourself.org.uk
- Every Mind Matters – a dedicated website with a wide range of practical support on managing your mental health www.nhs.uk/every-mind-matters

- Be U Notts - early mental health and emotional wellbeing support for children and young people, and their parents / carers. www.beusupport.co.uk or Telephone – **0115 708 0008**

Information about further support organisations can be found at www.broxtowe.gov.uk/mentalhealth



Health and Wellbeing Hubs

Mobile health and wellbeing hubs travel across Nottinghamshire offering free advice and support on things like COVID-19 vaccines, making your money go further, using local health services and healthy lifestyle choices.

For more information on where to find your nearest hub, visit www.broxtowe.gov.uk/healthandwellbeinghubs



Have you heard the news?

Chilwell only memberships now just £17.95 a month for all this!

Gym | Classes | Activity Mornings



Join now!





Eastwood Memory Cafe

Eastwood Memory Cafe invited the Haylo Theatre Company to bring 'Over the Garden Fence' to Eastwood in September, kindly sponsored by Broxtowe Borough Council and Eastwood Town Council.

"Over the Garden Fence" tells the story of Annabelle and her Gran, Dolly, by way of a nostalgic journey through Gran's life, sharing memories of happiness, sorrow and joy. The fast-paced, uplifting and comical exploration into family, life and relationships promotes an awareness of dementia that is accessible to all and highlights the individual behind the diagnosis.

Broxtowe Borough Council Chief Executive, Ruth Hyde, attended and said: "I was so pleased to attend this performance. It was powerful in the way it conveyed some of the experiences of living with dementia and being a family member of a person who is living with dementia, and it was deeply touching and uplifting. Emotional education that inspires empathy, understanding and motivation to provide insightful support and companionship to anyone who is on this particular journey. I highly recommend it."

Eastwood Memory Cafe is a local charity offering support to people with dementia and their carers. The whole team work in a totally voluntary capacity and run a monthly Memory Cafe, providing a welcoming, judgement-free space to chat, have some fun and be supported, as well as arranging trips out and other events and activities. They also provide an Emotional Wellness Programme for the carers run by a highly skilled and experienced Counsellor, with respite available for loved ones, provided by Age UK Notts and Memory Cafe volunteers.



L LEISURE EXERCISE FOR HEALTH

Ways that exercise can benefit your health:

- reduce pain
- increase muscle strength in joints
- reduce joint stiffness
- improve physical function and mobility
- lower blood pressure
- improve posture and reduce back pain
- prevent osteoporosis
- control stress levels



Get involved:

- Monthly Buggy Walks at Attenborough Nature Reserve
- Monthly Wellbeing Walks from The D.H. Lawrence Birthplace Museum
- Weekly Chair Based Exercise Classes in Eastwood
- Weekly Sporting Memories Group at Bramcote Leisure Centre
- Low Impact and Easy Pace classes available at our leisure centre's
- *Exercise Referral Scheme for discounted and supported. *referral only



getactive@leisure.co.uk
www.leisure.co.uk/getactive

L Leisure Exercise for Health

For someone living with a long term health condition, exercise is often feared and they might worry about making the condition worse, but a wide range of conditions can actually be managed or improved through exercise.

Exercise can also help lower the risk of developing health conditions such as heart disease, type 2 diabetes, strokes and some cancers and it can also boost self-esteem, mood, sleep quality and energy levels.

If you would like any further information about how to get involved in any of our activities please email **getactive@lesiure.co.uk**

Live Well Together

In Broxtowe, we want to support all residents to live well, whether that's adopting a healthier diet, moving a little more or getting support with mental health or other issues which affect your wellbeing. Information and advice on living well in Broxtowe can be found at **www.broxtowe.gov.uk/livewell**





Local Policing

Did you know that Broxtowe Neighbourhood Policing team posts regular updates on the Nottinghamshire Police website about the latest issues affecting the Borough? Visit www.nottinghamshire.police.uk/neighbourhoods and search your postcode to view them and other local policing information.

IMPORTANT CONTACTS

To find out about crime in Broxtowe check out the Neighbourhood Alert System at www.nottswatch.co.uk

or visit the Nottinghamshire Police website at www.nottinghamshire.police.uk

In an emergency or to report a crime in progress contact the police on **999**.

To report information and suspicious activity contact the non-emergency Nottinghamshire Police number **101**.

To report crime anonymously contact Crimestoppers on **0800 555 111**



White Ribbon Campaign



The Council is a White Ribbon Accredited local authority, working to end male violence against women.

We're helping to promote the campaign and encourage professionals and members of the public to never excuse, commit or remain silent about male violence against women.

At Broxtowe, we have developed an action plan which includes working with local groups, employees, Elected Members and partnership organisations to raise awareness of Domestic Abuse and the White Ribbon Campaign.

At the same time, we are working to promote our inclusive service of preventing all types of domestic abuse and Broxtowe collectively 'saying no to Domestic Abuse'.



"Domestic abuse in all forms is completely unacceptable and no one should have to live in fear in this way. This is such an important issue and that's why I have chosen to raise awareness of domestic abuse during my Mayoral year. If we can help just one person to access support, leave an abusive relationship and stop abusive behaviour continuing then we will have really made a difference to that individual or family's future."

Councillor David Grindell, Mayor of Broxtowe

If you need support, the following organisations can help:

- **Juno Womens Aid**
☎ 0808 800 0340
- **Broxtowe Women Project**
☎ 01773 719 111
- **National Womens Aid**
☎ 0808 200 0247
- **Equation Mens Helpline**
☎ 0800 995 6999
☎ 0115 960 5556
- **Mens Advice Line**
☎ 0808 801 0327
- **LGBTQ+ Gaylopp**
☎ 0800 999 5428
- **Broxtowe Sanctuary Scheme**
☎ 3492
- **IDVA Advocacy Service**
☎ 01909 533 617
- **Victim Care (Domestic Abuse)**
☎ 0808 168 9111
- **Childline**
☎ 0900 1111
- **NSPCC Helpline**
☎ 0808 800 5000
- **Forced Marriage Unit**
☎ 020 7008 0151
- **Midlands Womens Aid Refuge**
☎ 0300 302 0033
- **Nottinghamshire Sexual Violence Service**
☎ 0115 941 0440
- **East Midlands Child Sexual Assault Service**
☎ 0800 183 0023
- **Institutional Child Sexual Assault Survivors Service**
☎ 0115 950 8713

Funding for Safer Streets in Eastwood

Eastwood South is set to become safer thanks to funding for CCTV, security measures and environmental improvements.

The measures will include fixed and mobile CCTV cameras to prevent crime and antisocial behaviour and automatic number plate recognition cameras that can help police track criminals who use the road network.

Scargill Walk flats will benefit from some dedicated funding for CCTV.

Car parks in Victoria Street and Alexandra Street will also be given funding to help them reach the national Park Mark accreditation, which recognises measures to prevent vehicle crime.

It follows a successful bid by the Office of the Police and Crime Commissioner for Nottinghamshire for £750,000 in Safer

Streets funding for South Nottinghamshire, in partnership with Broxtowe Borough Council, Gedling Borough Council and Rushcliffe Borough Council. The money will be split three ways by each Council area for projects that will help make people who live, work and visit feel safer.



Keeping you safe at night

The Council's Communities and Licensing Teams have taken part in a number of night-time operations alongside Nottinghamshire Police.

The purpose of these operations are to reduce the risk of anti-social behaviour, make sure licensed premises are operating within the law, to engage with local people using the night time economy and to make Broxtowe's town centres a welcoming place to come.

As part of the operations, a number of pubs and businesses were visited. Checks carried out included drugs wipe testing and CCTV checks.

We know from your feedback that you appreciate this joint presence in the community, tackling crime and anti-social behaviour so we will be continuing to work with our partners on activities like this in the future.



Volunteer to help combat loneliness in your local community

Imagine not talking to anybody for a week or two.

The silence, unable to speak about how you are feeling! Happy, sad, lonely. Rushcliffe Community and Voluntary Service works across Rushcliffe, Gedling and Broxtowe and is trying to change that.

Telephone Befrienders from the Broxtowe Borough area are desperately needed to continue this life-changing work. Just one hour of your time a week will make a positive impact on someone's quality of life.

Become a telephone Befriending Volunteer today, call The Befriending Service on 0115 969 9060

♥ Together We Improve Lives



BWP Proud to be selected as Notts FA's Charity of the Year

In September, Nottinghamshire Football Association named Domestic Abuse charity, Broxtowe Women's Project (BWP) as it's Charity of the Year.

BWP's CEO, Colette Byrne, said: "We are extremely grateful to be chosen by Notts FA as their Charity of the Year. This is the beginning of a very special partnership."

Leanne Woodhead-Groves, Notts FA's COO, added: "We are extremely proud to have BWP as our Charity of the Year. We take our responsibility to use the power of football to engage and communicate important messages seriously."

In the run up to White Ribbon Day (25 November) BWP together with Notts FA and

other partners including Broxtowe Borough Council will promote the White Ribbon message, asking people to take the White Ribbon pledge to never commit, excuse or remain silent about male violence against women.

To find out more about the partnership, Broxtowe Women's Project, or the White Ribbon Pledge, visit www.broxtowewomensproject.org.uk



PERSONALISED CARE AND SUPPORT IN YOUR OWN HOME



CAREMARK
Broxtowe & Erewash
0115 943 6064



'Caring for others is our privilege'



- Support with daily routines
- Personal hygiene and care
 - Light housework
- Shopping and meal preparation
 - Companionship
- Attending appointments

www.caremark.co.uk/locations/broxtowe-and-erewash



Yule love Derby this festive season

Supported by
Smooth
Radio 97-108
YOUR RELAXING MUSIC MIX

LittleWOLF
Cold Feet & The Masked Singer's
JOHN THOMSON
Best Dame Award Winner
MORGAN BRIND **KRISTIAN CUNNINGHAM**

Aladdin

Derby Arena Fri 9 - Sat 31 Dec

BOOK YOUR TICKETS
£28, concessions £10

FAMILY TICKETS AVAILABLE

The
CHRISTMAS TOY SHOP MYSTERY

Fri 9 - Fri 30 Dec
Derby Market Place
£14

Most Top
A CHRISTMAS CAROL

Wed 21 & Thu 22 Dec
Derby Market Place
£14

Ice Rink

Mon 5 - Sat 31 Dec
Derby Market Place
£8.50, concessions £7

FAMILY FESTIVITIES

AT MARKEATON PARK

FREE ENTRY
(donations welcome)

Sat 3 & Sun 4 Dec
Markeaton Park
Craft Village

festivederby.co.uk



Inspire Adult Learning

Culture | Learning | Libraries

Scan here to book and enrol



Learn Local, Go Far

Explore our amazing range of courses for adults and families in Beeston, Stapleford and beyond.

Pick up our Inspire Adult Learning Course Guide 2022-23 in your local Inspire library, or view online at inspireculture.org.uk/learning

Learn in your local library
across 100 local venues

Distance Learning

Online Courses

Recognised qualifications

*subject to eligibility criteria

FREE* AND LOW COST COURSES

inspireculture.org.uk/learning | 01623 677 200 | learning@inspireculture.org.uk

#BeInspired #InspireLearning



working with



Nottinghamshire County Council



Education & Skills Funding Agency



InspireLearningSkills



@Learn_Inspire

Aged
16-19
in Beeston?

Achieve your goals with
INSPIRE LEARNING COLLEGE

Are you finishing school and unsure of your next steps?

Are you looking to gain valuable skills, qualifications, and support?

OUR BEESTON BASE OFFERS:

Pathways

- Personal and Social Development
- Employability
- English and Maths
- Community projects and work placements

[f InspireLearning1624](https://www.facebook.com/InspireLearning1624) [@Learn_Inspire](https://twitter.com/Learn_Inspire)

Earn as you learn – up to £100 per month*

*Child benefit not affected

Supportive and experienced tutors

Improve interpersonal skills

Build your confidence



Find out more: 0115 804 3611 | learning@inspireculture.org.uk | inspireculture.org.uk/college



working with



Nottinghamshire County Council



Education & Skills Funding Agency

NEW!

BERTIE'S BIRTHDAYS

Choose L Leisure for your little one's special day and make memories that will last a lifetime. Bertie's Birthdays include a wide range of children's party options to suit a variety of ages and abilities.



SCAN ME



BRAMCOTE • CHILWELL • KIMBERLEY
WWW.LLEISURE.CO.UK • BOOK NOW!