



Broxtowe
Borough
COUNCIL

Broxtowe matters

Summer 2023

Kimberley Means Business

Work starts on £16.5million investment projects

ELECTION
SPECIAL
Meet your
newly elected
Councillors
page 4



Trailblazing Green
Rewards shortlisted for
two awards

Page 10



Events for all the family
Page 12



Cost of living support
Page 21



www.broxtowe.gov.uk

Bramcote Crematorium

Open Day

Saturday 8 July 2023

10.00am - 2.00pm

Crematorium employees will be on hand to give guided tours of the crematorium, demonstrating the systems and procedures used during the daily routine of one of the busiest crematoria in the UK.

If you would like to visit us, there is no need to book - just arrive between 10.00am - 2.00pm. There will be tours throughout the day and signs to advise where tours will start. Employees will be on hand to help if you require any assistance.

Associated organisations will be supporting the event and light refreshments will be available during the day free of charge.

Further details can be obtained from the crematorium office on: 0115 917 3849



BRAMCOTE
BEREAVEMENT SERVICES

Celebrating lives, cherishing memories

Tel 0115 917 3849 • **Email** cemeteries@broxtowe.gov.uk • **Website** www.bramcotebereavement.org

Getting in touch

- Web** visit www.broxtowe.gov.uk to pay and apply for services online
- Email** customerservices@broxtowe.gov.uk
- Call** 0115 917 7777 other useful contacts can be found on the back page
- Facebook** [/broxtoweboroughcouncil](https://www.facebook.com/broxtoweboroughcouncil)
- Twitter** [@broxtowebc](https://twitter.com/broxtowebc)
- YouTube** [/BroxtoweBC](https://www.youtube.com/BroxtoweBC)

Never miss out



Stay up to date by signing up to our free email newsletters and choose what you want to be kept informed about.

Sign up now at www.broxtowe.gov.uk/emailme

Broxtowe Matters is distributed electronically, twice a year via the Council's email me service. Printed copies are available from local groups and organisations or on request.

We welcome your comments and views – please send them to press@broxtowe.gov.uk or call 0115 917 3231.

This document is available in large print upon request.

ਸੇਵਕ ਤੁਸੀਂ ਇਹ ਜੀਫਲੈਟ ਕਿਸੀ ਹੋਰ ਭਾਸ਼ਾ ਜਾਂ ਫੋਰਮੈਟ ਵਿੱਚ ਚੋਣਾ ਚਾਹੁੰਦੇ ਹੋ ਤਾਂ ਕ੍ਰਿਪ ਕਰਕੇ 0115 9177777 ਤੇ ਸਾਡੇ ਨਾਲ ਸੰਪਰਕ ਕਰੋ।

如果你需要此傳單用其他的形式或文字寫成，請撥電話 0115 917 7777 與我們聯絡。

اگر آپ چاہتے ہیں کہ یہ لیف لیٹ آپ کو اردو زبان میں مہیا کیا جائے تو براہ مہربانی فون نمبر: 0115 9177777 پر رابطہ کریں۔

If you need this leaflet in other formats or languages contact us on 0115 917 7777

Introduction

Following our recent Borough elections, we are entering a new political administration at Broxtowe.

Local Councillors are elected to represent the community and support residents with local issues - you can find out who your Councillor is on the next few pages, along with how to contact them or visit www.broxtowe.gov.uk/yourcouncillor

There is much work to do over the coming months, including gathering your views on what our priorities and objectives should be over the coming four years. We'll be sharing details about how you can take part very soon and look out for Officers at drop in events over the next few weeks who are happy to talk to you about any ideas you have.

Broxtowe is home to many diverse people, groups and organisations and this cultural richness is something the Council wishes to encourage and support. In the centre of this newsletter is a flavour of some of the many events taking place over the rest of 2023. If your group or organisation are organising a community event, you can add it to our online events calendar at www.broxtowe.gov.uk/events

Regeneration projects in some of our towns are moving ahead at pace, with Kimberley the latest area to benefit from a substantial £16.5m government funding pot. Further information about what is planned to revitalise the town, along with developments in Beeston, Eastwood and Stapleford can be found on pages 15 and 16.

At the time of going to print, we are eagerly awaiting the outcome of two award ceremonies to see if the Council, along with other Nottinghamshire authorities have been recognised for what has been described as a 'trailblazing' approach to tackling climate change and partnership working. You can read more about the Green Rewards scheme which we have been shortlisted in these awards for on page 10, where you'll also find details about how you can sign up and start making small changes to create a big difference in our carbon footprint.



Ruth Hyde OBE
Chief Executive



Councillor Milan Radulovic MBE,
Leader of the Council



Councillor Greg Marshall,
Deputy Leader of the Council

Also in this issue...

Election Special
P4



Business Growth
P15



Community News
P6



Community Safety
P17



Environment
P9



Health
P19



What's on
P12



Housing
P22





Election of Borough Councillors 2023-2027

Details of your newly elected Councillors and how to contact them

ATTENBOROUGH & CHILWELL EAST**1**

Helen Faccio
LAB
30 Hurts Croft,
Chilwell,
Nottingham
NG9 5DE
07813 877 308



Richard Falvey
LAB
4 Bramcote Lane,
Chilwell,
Nottingham
NG9 5EN
07516 091 209



Pauline Smith
LAB
90 Long Lane,
Attenborough,
Nottingham
NG9 6BQ
07985 631 225



Lydia Ball
CON
The Woodlands,
The Lane, Awsworth
Nottingham
NG16 2QP
07799 054 400



Don Pringle
CON
31 Nottingham Road,
Trowell,
Nottingham
NG9 3PF
07917 038 817

BEESTON CENTRAL**3**

Gabrielle Bunn
LAB
69 Derby Road,
Beeston,
Nottingham
NG9 2TB
07760 237 750



Vanessa Smith
LAB
4 Highfield Court,
Beeston,
Nottingham
NG9 1HN
07405 780 195



Greg Marshall
LAB
Foster Avenue,
Beeston,
Nottingham
NG9 4DE
0115 917 7777



Ellie Winfield
LAB
6 Railcar Close,
Beeston,
Nottingham
NG9 2XG
07848 378 171

BEESTON RYLANDS**5**

Shaun Dannheimer
LAB
15 Gwenbrook Avenue,
Beeston,
Nottingham
NG9 4BA
07999 886 962



Sarah Webb
LAB
57 Trentside,
Beeston,
Nottingham
NG9 1NB
07488 235 026

BEESTON NORTH**6**

Barbara Carr
LIB DEM
5 Tracy Close,
Beeston,
Nottingham
NG9 3HW
07817 558 854



Steve Carr
LIB DEM
5 Tracy Close,
Beeston,
Nottingham
NG9 3HW
07946 411 101



Andrew Kingdon
LIB DEM
50 Bankfield Drive
Bramcote
Nottingham
NG9 3EG
07779 616 602



Hannah Land
LIB DEM
43 Hanley Avenue,
Bramcote,
Nottingham
NG9 3HE
07740 198 612



David Watts
LIB DEM
6 Edingale Court,
Bramcote,
Nottingham
NG9 3LY
0115 854 4031

BRINSLEY**8**

Elizabeth Williamson
IND
7 St James Drive
Brinsley,
Nottingham
NG16 5DB
07764 997 059



Stephen Jeremiah
LAB
98 High Road,
Chilwell,
Nottingham
NG9 4AG
07740 022 260



Helen Skinner
LAB
2 Burton Drive,
Chilwell,
Nottingham
NG9 5NS
07596 073 832



Colin Tideswell
LAB
23c Valley Road,
Chilwell,
Nottingham
NG9 4GG
07748 365 601

CHILWELL WEST**9**

Bob Bullock
LAB
14 Owlston Close
Eastwood,
Nottingham
NG16 3GA
07888 684 929



Susan Bagshaw
LAB
5 Owlston Close,
Eastwood,
Nottingham
NG16 3GA
07960 252 273



Milan Radulovic
LAB
4 Cross Street,
Eastwood,
Nottingham
NG16 3GX
07768 658 717

EASTWOOD HALL**10****EASTWOOD HILLTOP****11****EASTWOOD ST. MARY'S****12**

David Bagshaw
LAB
5 Owlston Close,
Eastwood,
Nottingham
NG16 3GA
01773 788 648



Ken Woodhead
LAB
28 Hopkins Court,
Eastwood,
Nottingham
NG16 3AZ
07484 832 712



Michael Brown
CON
1 Mary Road,
Eastwood,
Nottingham
NG16 2AH
07764 831 898



Hannah Crosby
CON
8 Bramber Close,
Boulton Moor,
Derby
DE24 5DR
07801 277 813



Adam Stockwell
CON
35 New Eaton Road,
Stapleford,
Nottingham
NG9 7ER
07934 671 407

KIMBERLEY**14**

Chris Carr
LAB
8 Rolleston Crescent,
Watnall,
Nottingham
NG16 1JU
07956 634 984



Andy Cooper
LAB
4 New Farm Lane,
Nuthall,
Nottingham
NG16 1DY
07502 279 198



Will Mee
LAB
98 Park Road,
Beeston,
Nottingham
NG9 4DE
07400 873 843



Graham Stewart Hills
CON
11 Vernon Drive,
Nuthall,
Nottingham
NG16 1AR
07768 063 690



Philip Owen
CON
2 Atkinson Gardens,
Nuthall,
Nottingham
NG16 1LN
0115 938 9728

GREASLEY**13****STAPLEFORD NORTH****16**

Donna MacRae
IND
245 Ilkeston Road,
Stapleford,
Nottingham
NG9 8JH
07976 298 611



Richard MacRae
IND
245 Ilkeston Road,
Stapleford,
Nottingham
NG9 8JH
07740 344 427



Ross Bofinger
LAB
195 Brookhill Street,
Stapleford,
Nottingham
NG9 7GU
07477 677 947



Katherine Harlow
LAB
9 Peatfield Court,
Stapleford,
Nottingham
NG9 8HD
07718 828 286



John McGrath
LAB
2 Park Street,
Stapleford,
Nottingham
NG9 8EU
07905 576 353



Sue Paterson
LAB
47 Hillfield Road,
Stapleford,
Nottingham
NG9 8PS
07981 033 947

STAPLEFORD SOUTH WEST**18**

Teresa Cullen
LAB
121 Meadow Lane,
Beeston,
Nottingham
NG9 5AJ
07921 800 57



Stephanie Kerry
CON
11 Hook Close,
Chilwell
Nottingham
NG9 5AT
07711 801 442



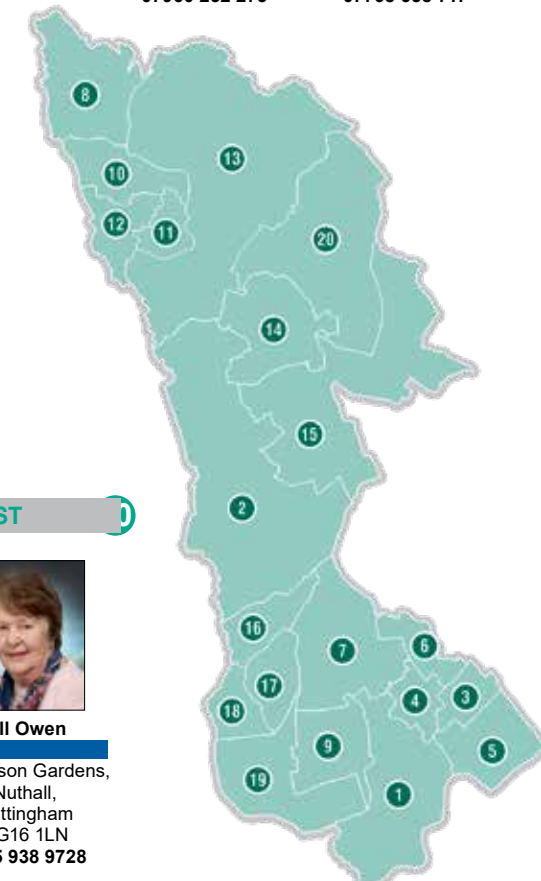
Halimah Khaled
CON
16 Sheriffs Lea,
Toton,
Nottingham
NG9 6LJ
07860 490 989

TOTON & CHILWELL MEADOWS**19**

Peter Bales
LAB
24 Roland Avenue,
Nuthall,
Nottingham
NG16 1BB
07949 102 929



Jill Owen
LAB
2 Atkinson Gardens,
Nuthall,
Nottingham
NG16 1LN
0115 938 9728

WATNALL & NUTHALL WEST**20**



Council decision making and how you can get involved

The Council's Cabinet and other Committees make decisions about services or have delegated powers to make decisions based on law.

Cabinet, and most Committees, are public meetings so members of the public are welcome to attend. At certain meetings, like full Council Meetings, members of the public can also ask questions by prior arrangement.

Agendas, minutes and meeting dates are published on our website at www.broxtowe.gov.uk/committees and decisions for many of the Committees are shared on our Twitter account [@broxtowebc](https://twitter.com/broxtowebc).

You can attend meetings in person at the Council Offices in Beeston or you can view a live stream of the meeting whilst it is taking place on our YouTube channel www.youtube.com/BroxtoweBC.

Through Overview and Scrutiny, the Council is keen to investigate issues that are important to the people of Broxtowe. If you have an issue that you feel the Overview and Scrutiny Committee should look at as part of its work please get in touch committees@broxtowe.gov.uk.



A moment in history: King Charles III's Coronation

People across Broxtowe came together to celebrate the Coronation of King Charles III last month.



From street parties to big lunch and big help out events, it was great to see community spirit out in full force in the Borough during the special bank holiday weekend.

Mayor of Broxtowe 2022/23, David Grindell hosted a Big Lunch event for people in the community, along with members of the Anglo-German Society, who were visiting Broxtowe to mark the 45th anniversary of the society.



Literacy Volunteers

Volunteers are needed to help primary school children with their reading and communication skills. You will read and play word games with selected children on a one-to-one basis, to give them confidence and help them enjoy reading and communicating.

Volunteers need to be able to commit to visiting a school on the same morning or afternoon each week (for at least a year). Training and ongoing support is provided. Volunteers should like children, enjoy reading, be patient, flexible and reliable. You will be vetted through the Disclosure and Barring Service.

If you are interested, please call **0115 876 5474** or email contact@literacyvolunteers.org.uk



Learn Local, Go Far!

From courses for fun and forming new friendships to gaining a recognised qualification, Inspire Adult Learning has something for everyone at your local library and online.

The programme for Summer includes Level 1 qualifications in Mental Health Awareness, and Spreadsheet Software, as well as non-accredited courses in Bookkeeping, Creative Writing, Poetry and ESOL (English for Speakers of Other Languages).

They are also enrolling now for our Access to Higher Education course starting in September, where you can study online or at the newly refurbished Stapleford Library! If you're aged 19-24 and you don't yet hold a full Level 3 qualification, you could study for FREE!

There's even courses for young people at Inspire College, Stapleford, where young people can gain valuable skills and qualifications, and resit GCSEs in maths and English - all whilst earning up to £100 a month!

Feeling inspired? Find out more and enrol at www.inspireculture.org.uk/learning, call Ask Inspire on 01623 677 200, or pick up a copy of the new course guide or college prospectus from your local library.

Culture | Learning | Libraries

Learn Local, Go Far

Explore our amazing range of courses for adults and families in Nottinghamshire and beyond. Pick up our Inspire Adult Learning Course Guide 2023 summer edition in your local Inspire library, or view online at inspireculture.org.uk/learning

- Learn in your local library (or other local venues)
- Distance Learning
- Online Courses
- Recognised qualifications

FREE* AND LOW COST COURSES

inspireculture.org.uk/learning | 01623 677 200 | learning@inspireculture.org.uk
 f InspireLearningSkills | @Learn_Inspire | #BeInspired | #InspireLearning

working with
 Nottinghamshire County Council | Education & Skills Funding Agency

Improve Your Financial Resilience

The cost-of-living is a real threat to the financial sustainability of households and the long-term prosperity of Broxtowe.

It's important that the local community improves its financial resilience to economic shocks like the current cost-of-living crisis. That is why Broxtowe Borough Council have included financial resilience work within its UK Shared Prosperity Fund Plan for the area.

Broxtowe Borough Council and Citizens Advice Broxtowe have come together to support people with their immediate money worries and also long-term financial wellbeing. The project, known as Financial Resilience Broxtowe, categorises financial resilience or wellbeing under the themes of income, spending and assets. Participants are offered an action plan to address all three themes along with medium and long-term support.

Futures Careers Service and Nottingham Energy Partnership have joined the initiative to help provide

a holistic approach to increasing people's financial resilience. Citizens Advice contribute through a range of services that include money and debt advice, income maximisation, consumer spending, financial capability, housing advice, digital inclusion and much more.

The objective is to offer a hand up towards improved financial resilience. If you feel you would benefit from the project, contact Citizens Advice Broxtowe at one of their local offices in Beeston, Eastwood or Stapleford. Visit www.citizensadvicebroxtowe.org.uk for more details on opening times.

Financial Resilience Broxtowe

Supporting people in Broxtowe towards financial well-being

citizens advice Broxtowe

Broxtowe Borough Council



Canopy 2050

Canopy 2050 is a community project in the Broxtowe area, based in Beeston. Their objective is to increase the urban tree canopy to 30%, as per the national target. More trees mean cleaner air and a healthier environment for us to live in.

They aim to do this by collecting seeds from specific native species and distributing them to volunteer tree guardians who plant them and care for the seedlings until the saplings are big enough to plant out (normally 2 years).

Tree Guardians will then be able to plant them out in areas designated by the Council. You can see your trees grow from seed to sapling and then be able to plant them out and watch their continued growth into a tree that will benefit your local community.

The project started in Spring 2021 with acorns collected in 2020. There



are now thousands of native tree saplings being cared for in gardens and allotments all over Nottingham.

After seed collecting forays in the autumn and seed extracting over the winter, they are now looking for new guardians, with thousands of seeds

from 16 different varieties of trees to distribute.

If you can grow flowers and veg, you can grow trees!

If you have space for a few pots, contact them on info@canopy2050.org or find them on Facebook.





Tree Maintenance

As you visit the Borough's parks, open spaces and cemeteries you may occasionally see tree works being undertaken.

We want to assure you that we take great pride in the number of trees we have across the Borough and works to remove trees are not undertaken lightly. A tree will only be removed if it is deemed necessary and falls under one or more of the following categories: dead, dying (including diseased), or dangerous (including damaging infrastructure).

Sometimes we are able to make use of a dead tree by carving it into a sculpture, retaining the important dead-wood habitat and stored carbon on site.



Trees play an important role in absorbing carbon dioxide and removing and storing carbon whilst releasing oxygen into the air. They also enhance the environment through both economic, social and environmental benefits.

Over the last 12 months, we have planted over 3,000 trees as part of our commitment to be carbon neutral by the end of 2027, as well as improving the environment for our residents.



Parks improvements coming soon...

- Queen Elizabeth Park, Stapleford - Playground improvements.
- Sandgate Open Space, Bramcote - Playground improvements.
- Banks Roads Open Space, Toton - Playground improvements.
- Bramcote Hills Park, Bramcote - Full playground refurbishments and parks improvements.
- Coronation Park, Eastwood – Path improvements.
- Leyton Crescent, Beeston – Path installation.
- Eastwood Cemetery, Eastwood – Path improvements.
- Hickings Lane Recreation Ground, Stapleford - Park improvements.
- Long Lane Recreation Ground, Attenborough – Entrance and park improvements.





Earn discounts and prizes
for completing every day
activities with

 **green
rewards**

A digital platform to help you
reduce your carbon footprint
and tackle climate change.

- Get 'Green points'
- Win prizes
(£20 vouchers for Marks and Spencer,
Love2Shop and many more)
- Get discounts
- Give back to your local
community
(biodiversity prizes for winning wards)

Sign up at
www.notts.greenrewards.co.uk
or download the app through
the Apple or Google Play Stores.



Trailblazing Green Rewards shortlisted for two awards

Notts Green Rewards has been shortlisted for two prestigious awards recognising the innovative partner approach taken across Nottinghamshire to address climate change.

The Local Government Chronicle (LGC) and Municipal Journal (MJ) Achievement Awards will both take place in June.

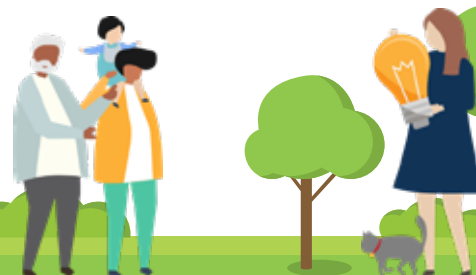
In October 2021, seven Nottinghamshire District Councils, Nottinghamshire County Council, Nottingham City Council, the University of Nottingham, Nottingham Trent University and platform creator Jump, joined together to create the trailblazing Green Rewards partnership. Nottinghamshire is the first county in the country to see all its local authority and education partners collaborate on a climate change reduction project in this way.



To date, Green Rewards has over **6,100** members and together they have undertaken **158,942** actions, which has avoided emitting nearly **420** tonnes of carbon. That's the equivalent of taking **90** cars off the road for a year, or not driving **over 1 million** miles in an average petrol powered car. That's equal to the distance of driving around the earth nearly **42** times.

 **green
rewards**


Green Futures
Broxtowe Borough Council





What happens to your garden waste

Last year Broxtowe residents sent 5,500 tonnes of garden waste for composting.

Once the garden waste is collected, it's taken to our depot in Kimberley, where it is bulked up for collection. From our depot there, it's taken to an open windrow composting site at Oxtun.

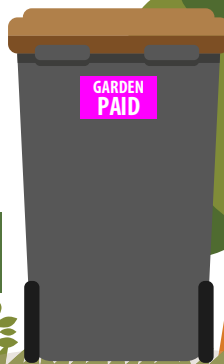
Here the material is screened and shredded and placed in large piles or windrows to compost. Composting this material takes between 4-6 months, depending on the weather conditions. After the process has finished the material is then used on agricultural land used to produce crops for animal feed.



It's not too late to sign up to the garden waste service!

- 1 new bin - £38
- Any additional bins are £24 each

The easiest and quickest way to subscribe is online at www.broxtowe.gov.uk/gardenwaste



Please make sure that your current garden waste sticker is on your bin. Without it your bin will not get emptied.

Want to know more about waste and recycling or climate change?

Environment Officers are able to deliver a range of engaging talks and presentations on topics including waste reduction, recycling and the importance of reducing our carbon footprint.

Through these talks, we hope to inspire individuals, community groups and schools to take action and make positive changes.

If your local group is interested in hosting a talk please contact environment@broxtowe.gov.uk



Glass bags

If you're enjoying BBQ season this summer and you have more glass for collection than usual, please make sure it is only placed out for collection in a Broxtowe Borough Council glass bag, otherwise it won't be collected.

You can have up to four bags or for a one-off cost of £32, why not purchase the use of a 140L red-lidded glass bin? Visit www.broxtowe.gov.uk/kerbsideglass for more details.

JULY TO DECEMBER 2023

WHAT'S ON IN BROXTOWE?



Broxtowe is home to hundreds of events which celebrate our rich heritage and culture, as well as giving people a chance to come together as a community.

Listings for Council organised events can be found on these pages. Visit www.broxtowe.gov.uk/events for details about the events below, as well as new events being added and other community organised activities.



EVENT

Live Music **FRIDAY 18**

Live music to start your weekends 6.00pm – 7.00pm every Friday from 16 June to 18 August, Beeston Square

Honouring our Armed Forces

Armed Forces Week

Armed Forces Flags will be raised across the Borough on **Monday 19 June** to mark Armed Forces week and honour the commitment and sacrifices our armed forces make.

Remembrance Sunday

Remembrance Parades will be taking place across the Borough on Sunday 12 November. Full details available at www.broxtowe.gov.uk/events and from your local Town or Parish Council.

Discover the life and times of D.H. Lawrence, as well as Broxtowe's wider local heritage through the D.H. Birthplace Museum's exhibitions and events.

Bennerley Viaduct Exhibition the Iron Giant of the Erewash Valley 8 June - 22 July

This pop-up exhibition from the Friends of Bennerley Viaduct charts its incredible history, from the Victorian railway boom, through dereliction, to walking and cycling destination. Learn more about the people and society that created it and the lasting impact it has on the communities Lawrence would have known well. Alongside the exhibition, there will be a programme of workshops and guided walks, bringing together Lawrence, creative writing, and visiting the viaduct as it is today.

D.H. Lawrence Portrait Exhibition 1 September - 28 October

A unique opportunity to view the last known portrait of Lawrence by artist Joep Nicolas. The portrait was painted at the house of fellow writer, Aldous Huxley, a relative of Nicolas and close friend of Lawrence.

Gin & Gaslight 13 October

A gin tasting experience with a difference, taking in the magic of the museum and its historic rooms and exhibitions by gas light.



8a Victoria Street,
Eastwood, Nottingham,
NG16 3AW
t: 01773 917 3824

D.H. Lawrence Festival 1 - 11 September

The D.H. Lawrence Festival returns to venues in and around Eastwood this September, to coincide with the birth of accomplished (and often considered controversial) writer D.H. Lawrence in September 1885. Events include workshops, talks, walks and more.

D.H. Lawrence Children's Prize

Exhibition 3 November - 22 December

An exhibition showcasing the poems, short stories and non-fiction pieces about the local area which were entered into the D.H. Lawrence Children's Prize: Writing Competition by children and young people earlier this year.

Find out more at www.broxtowe.gov.uk/exhibitionsandevents

playDays

Fun for all the family with fair rides, inflatables, arts & crafts, puppet shows and more.

Beeston	28 July • Broadgate Park, Beeston
Stapleford	1 August • Hickings Lane Recreation Ground, Stapleford
Eastwood	3 August • Coronation Park, Eastwood
Chilwell	7 August • Inham Nook Recreation Ground, Chilwell
Kimberley	9 August • Kimberley School Field, Kimberley

All events run from 12pm - 4pm

Christmas Lights Switch On Events

Stapleford
25 November

Eastwood
28 November

Beeston
2 December

Kimberley

Details available from Kimberley Town Council



Tell us about your events!

We know that this is just a tiny snapshot of the many diverse events taking place in our Borough so if you are organising a community event, visit www.broxtowe.gov.uk/events to add details to the event calendar to share with other residents.

Climate Change and Green Futures

Climate change has been declared an emergency in Broxtowe. This year, we're holding a variety of environmental events to help improve the local area, encourage biodiversity and help local people take small steps which will create a big difference in reducing our carbon footprint.



Other events taking place through the year include:

- Bulb/Tree Planting/Play area Events
- Clean and Green Community Litter picks
- Days of action: Combined Housing and Environment events
- Dog Fouling Prevention Events
- Green Festivals
- School Engagement Events
- Local Community Talks including CAT Meetings
- Waste Action Days



Sign up to our Environment or Parks and Open Spaces email bulletins at www.broxtowe.gov.uk/emailme for updates.



The D.H. Lawrence Birthplace Museum: a hidden gem in Eastwood

A must see for fans of literature and those wanting to delve deeper into Nottinghamshire heritage, the D.H. Lawrence Birthplace Museum is where this literary legend was born on 11 September 1885.

Step back in time to experience the traditional Victorian wash house, see the parlour - a room only for special guests, feel the warmth of the fire in the kitchen and have a wander around the parental and other bedrooms. The museum's permanent exhibition features items from Lawrence's family and even paintings created by the author himself.



Upcoming events

Our annual events programme includes Gin and Gaslight events, the D.H. Lawrence Festival, wellbeing walks, workshops and much more. See what's coming up at www.broxtowe.gov.uk/exhibitionsandevents



For groups

We welcome groups to the museum, with discounts for groups of 10 or more. We can also offer bespoke tours to suit the interests of your group, as well as translation sheets.



For schools

A visit to the D.H. Lawrence Birthplace Museum is a fascinating way for children to engage with a variety of learning topics, while having a fun day out. We can also offer digital options.

Nothing quite beats handling an original artefact, so our loan boxes are a great way for schools to extend learning about local history within the classroom. We currently have loan boxes on three topic areas:

- Mining
- School holidays
- Leisure

Each loan box contains artefacts and resources, and comes with activities that are suitable for the classroom. The activities are cross-curricular, so as well as offering interactive engagement with local history they also cover, English, Art, PSHE, Music, Science, Biology, Drama and Technology.

Gallery Space

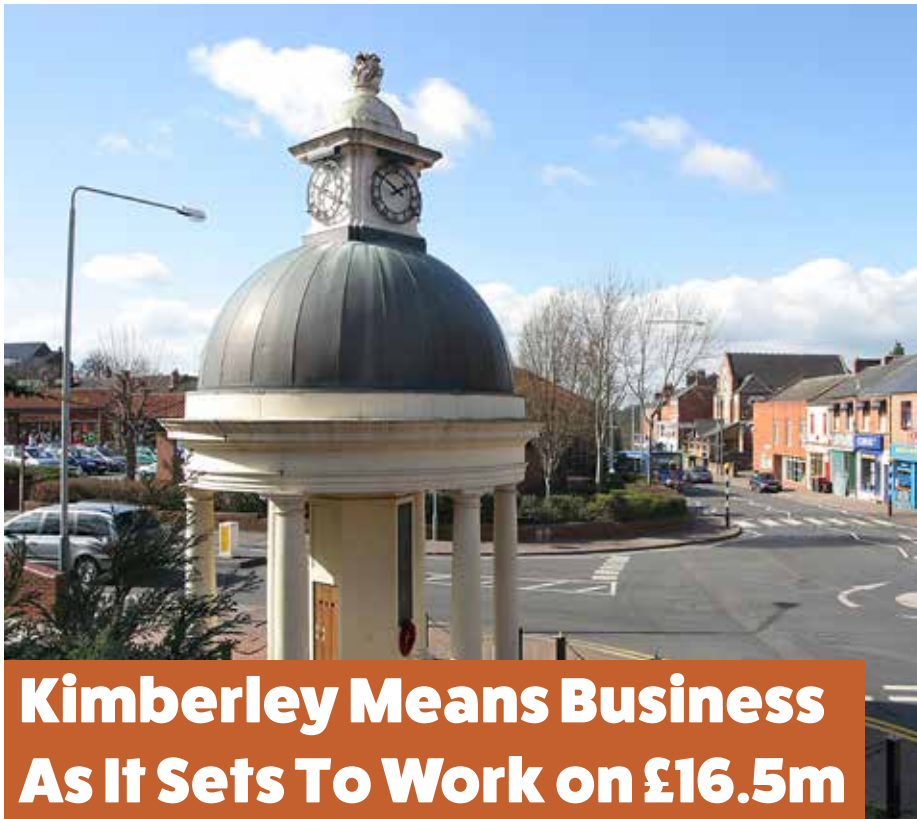
As well as fascinating exhibitions on Lawrence and local history in our Gallery Space, we also love to promote our local community so if your group has an exhibition that you think would work well please contact us.

Visit us at 8a Victoria Street, Eastwood, Nottingham, NG16 3AW. We're open Thursdays, Fridays and Saturdays, 10.00am until 4.00pm.

We can open the museum at times outside of our normal opening for groups and school visits if required.

www.broxtowe.gov.uk/dhlawrencemuseum or follow us on Facebook

D.H. Lawrence
BIRTHPLACE MUSEUM



Kimberley Means Business As It Sets To Work on £16.5m Levelling Up Projects

Work is underway on projects to invest £16.5m in Kimberley as part of the Government Levelling Up Fund. Improvements will include:

Town Centre Improvement Project

- New Business and Community Hub in place of the existing Parish Hall, including co-working, office and community activity space.
- Small business grants to improve the look and feel of the town and business functionality – the first round of applications have taken place, with a further round expected later in the year.
- Lighting equipment for displays and VR attractions to encourage more events and visitors.

Cycle Path Network and Bennerley Viaduct Eastern Ramp

- New active travel route to link up Kimberley with Eastwood, Giltbrook, Phoenix Park Tram Stop and Bennerley Viaduct to make it easier to cycle and walk in the area.
- Construction of an accessible Eastern Ramp at the Grade 2* listed Bennerley Viaduct to enhance this important historical site for local people and tourists.

Digby Street Industrial Units and Swingate Farm sports facilities

- New industrial units on the current Digby Street football pitch to allow new businesses to move into the area and create jobs.
- New sports facility at Swingate Farm including a football and cricket pitch to support Kimberley's sports teams.



Funded by
UK Government

Beeston Square development going from strength to strength

Rassam's Creamery opened its doors in January, joining other venues including Arc Cinema and The Beeston Social at the multi-million pound Beeston Square development.



The dessert parlour offers an expansive 34-page dessert menu including waffles, pancakes, ice-creams, cookie dough and milkshakes and more. Already an established name around Yorkshire, this is the company's eighth restaurant and the first outside its home county.

Core VR, a location-based free roam virtual reality company, is also expected to open imminently, offering customers an immersive experience that allows them to fully engage with their surroundings and feel like they are actually inside the game.

The Council is in discussions with operators for the remaining vacant units.



Stapleford Town Fund

People in Stapleford are starting to see real change to their town, with even more to come, through the £21million Stapleford Towns Fund.

More than 70 high street businesses have benefitted through a £1million recovery grant, including the town's oldest shop, Rowells, which has been going so long it's seen six Kings and Queens since it started in the family 120 years ago. A dance school, a popular sports bar, sewing workshop and many others have benefitted from the grants.

Elsewhere a derelict building has been demolished to create a new car park and pave the way for a new Enterprise hub; Stapleford library will offer improved learning space when it re-opens in June; plans are being considered for a new community centre and young peoples' facility on the Hickings Lane Recreation Ground; street improvement plans are in the process of being agreed and a safer cycling scheme is already underway, with a popular new cycle hub and cycle training track already open to the public.



£75,000 business grants scheme

£69,000 business grants have been awarded so far as part of a £75,000 scheme.

The Council opened applications in March for businesses in Kimberley, Eastwood, Beeston and Chilwell to apply for grants of up to £2,500 for things like shop and business frontage improvements, street scene or conservation area related initiatives, energy saving measures, disability access improvements and digital, productivity and ecommerce investments to improve productivity or create jobs.

The funding is made available from the UK Government's Levelling Up and Shared Prosperity Funds.

The scheme follows the successful COVID Recovery Grants Scheme in Stapleford, as part of the Town Deal. 74 businesses have now benefitted from a share of this £1m scheme, together with their own funding.



Rowells in Stapleford is one of the businesses in the Borough which has already benefitted from business grant schemes



**Funded by
UK Government**

Eastwood

88 Council homes will be made more energy efficient thanks to a successful bid by the Council to the Social Housing Decarbonisation Fund. The fund will help the Council to tackle the difficult challenge of retrofitting properties within one of the Borough's conservation areas, whilst also reducing fuel poverty.

£192,000 funding from the Home Office and Nottinghamshire's Police and Crime Commissioner has been helping to improve community safety and crime reduction in the area. Find out more on page 18.

Plans are underway to submit a new bid for the town in the next round of Levelling Up funding once details about this have been released by Government.



Connected with Broxtowe Women's Project

In 2023, Broxtowe Women's Project (BWP) is committed to creating more connections between businesses, community organisations, charities and people through its Connected project.

Help them to make a difference for anyone that has experienced domestic abuse by:

- Taking a look at their website and case studies to get ideas about how they could connect with you www.broxtowewomensproject.org.uk.
- Looking out for their new postcards, complete with QR codes that take you straight to the website.
- If you prefer the more traditional hard copies, they are happy to drop in for a coffee and chat to share their information with you.
- If you have an idea for a joint project then please contact Partnership Manager Chris, on chris@broxtowewp.org.

equation 2021 - 2022 IN NUMBERS

equal relationships free from abuse

Domestic abuse support and prevention charity Equation have been working across primary and secondary schools in Broxtowe to raise awareness and understanding of domestic abuse and healthy relationships.

The classroom workshops help students get the support they need and teach them that everyone deserves a healthy and happy relationship, free from abuse.

Around 8,000 pupils in the city and county benefit from these workshops every year, with almost 1,000 of them in the Broxtowe area.

For more information on Equation and what they do go to www.equation.org.uk.





Be A Friend : Safer Streets Against Scams

You can become a Friend Against Scams by completing a free interactive online learning session in the comfort of your own home or by attending a free awareness session run in your local area.

These are 45-minute interactive sessions run across England, Wales and Northern Ireland that educate people about different types of scams, how to spot and support a victim and actions you can take as a Friend to raise awareness and protect your community against scammers.



You can become a SCAM Champion by completing a short, 10-minute extra training session that equips you to run local Friends Against Scams awareness sessions.

Find out more at www.friendsagainstsams.org.uk



Eastwood has benefitted from £192,000 of funding from the Home Office and Nottinghamshire's Police and Crime Commissioner.

As part of the Safer Streets programme, the Council has introduced a range of community safety and crime reduction initiatives including:

- New state of the art high resolution CCTV cameras across the town centre.
- Two mobile cameras which will be deployed where crime, anti-social behaviour and environmental anti-social behaviour like fly-tipping occur.
- Improvements to two car parks resulting in two new Park Mark awards.
- New CCTV and lighting on Coronation Park.
- New CCTV at Scargill Walk.
- New windows to stairwells at Scargill Walk.
- Electric bikes for Police Officers, enabling them to be more agile and visible.
- Laptops for Police Officers enabling them to become more efficient and spend more time within the community.
- Additional ANPR cameras to track vehicles being used for criminal purposes.

- Fitting new home security products to vulnerable properties.
- A clean-up day to remove 3.6 tonnes of waste to make the local area more appealing.

These projects are part of wider package of investment in measures to make public spaces safer, after the Office of the Police and Crime Commissioner for Nottinghamshire secured £3 million from the Home Office's Safer Streets fund for projects across the county last year.





Dementia Support at The Studio

Broxtowe is home to a novel approach to dementia support - The Studio, which operates from the Royal British Legion Hall in Beeston.

The aim of The Studio is to enrich the lives of people with dementia and to support their family carers.

The Studio was set up four years ago to meet the need for day activities tailored to individuals with dementia. Its



distinctive focus is on enabling people with dementia to have fun and socialise through the use of creativity and imagination.

Activities include music, exercise, conversation, crafts and occasional outings. The Studio also runs sessions providing Couples Support, Carer Peer Support, Sporting Memories and Movement for Health and Wellbeing.

The Studio could use more volunteers and sessional staff. If you have a lively personality, some experience of supporting people with dementia and are willing to make a regular time commitment, we can offer relevant training and a hugely rewarding role. Please email thestudio@imagineartsdem.co.uk with details of your experience and say whether you are interested in paid sessions or in volunteering. The Studio is run by Imagine Artsdem Broxtowe CIO, registered charity no 1199448.

Find out more at www.thebeestonstudio.uk



Wellbeing Walks with the D.H. Lawrence Birthplace Museum

A programme of monthly Wellbeing Walks focused on getting an hour of fresh air, exploring the local area and meeting people.

On the walks you can enjoy Broxtowe's beautiful countryside, whilst learning about local heritage, and of course, D.H. Lawrence.

The walks are organised by the D.H. Lawrence Birthplace Museum in conjunction with LLeisure Ltd. Walks take place on the first Tuesday of each month, meeting at 10.00am at the Birthplace Museum on Victoria Street, Eastwood.



**REMAINING
2023 DATES:**
4 July, 1 August,
5 September,
3 October, 7
November and 5
December.



Live Well Together

In Broxtowe, we want to support all residents to live well, whether that's adopting a healthier diet, moving a little more or getting support with mental health or other issues which affect your wellbeing.

Visit www.broxtowe.gov.uk/livewell for information and advice to organisations who can help you with things like:

- Children and young people
- Everyday living
- Keeping active and healthy
- Meeting people and community life
- Mental Health
- Stopping smoking, drugs and alcohol
- Health and Wellbeing Hubs
- Cost of living



SIT LESS & MOVE MORE

Claim your free VIP guest pass today



SCAN ME



**Go to the gym
Have a swim
Try a class
Relax in the sauna**



Cost of living special

If you are worried about the rising cost of living, help and support is available.

Maximising your income / benefits



Universal Credit - If you are working age and already claim benefits, you may be better off if you move to Universal Credit www.gov.uk/universal-credit

Pension Credit - Help with Council Tax and free TV licences over the age of 75. Nottinghamshire County Council is also offering additional support for those who currently receive Pension Credit. To check if you, or a family member might be entitled, visit www.gov.uk/pension-credit-calculator

Housing Benefit - If you are pension-age live in rented accommodation and are on a low income you may be able to claim help with your rent via www.broxtowe.gov.uk/benefits

Council Tax Support - If you pay Council Tax and are on a low income you may be able to claim Council Tax Support. This includes a new Government grant which the Council has automatically applied to qualifying Council Tax bills for 2023/24.

Discretionary Housing Payments - If you are in private rented or Housing Association accommodation and your rent is not covered in full by Housing Benefit or the Housing Element of Universal Credit, the Council has limited funding to support some shortfalls www.broxtowe.gov.uk/discretionaryhousingpayment

For more general benefit advice, visit www.gov.uk/welfare or www.nottinghamshire.gov.uk/care/benefits-finance/benefits

Housing

If you need other housing advice or are homeless or at risk of being made homeless, the Housing Options Team can provide help and support. You can contact them on **0115 917 7777** or visit www.broxtowe.gov.uk/housingadvice

Energy Bill Support Scheme



There are a number of Government schemes to help those who are not eligible for the automatic Energy Bills Support Scheme and those who use alternative fuel.

Apply at www.gov.uk/apply-alternative-fuel-bill-support-if-not-automatic.



Managing your money

If you are struggling with managing your money or need advice about financial support and benefits, the following organisations may be able to help.

The important thing is not to delay in making contact so you can get the advice you need.

Citizens Advice Broxtowe

www.citizensadvicebroxtowe.org.uk or call

Adviceline: 0800 144 8848 Textphone: 0800 144 8884.

Turn2Us - a national charity who provide financial support to help people get back on track.

www.turn2us.org.uk

Money Advice Service - Free and impartial money advice www.moneyadviceservice.org.uk.

Council Tenants – book an appointment with our Financial Inclusion Officer who can help you with budgeting, benefits and accessing funding.
Call 0115 917 7777.

The Government have a dedicated website with details of all the help available for households www.helpforhouseholds.campaign.gov.uk



Lifeline



24 hour support from as little as £3.93 a week

The Council's Lifeline Service gives you a lifeline when you need it, with round the clock support through a unit which plugs into your telephone socket. It also includes a discreet alarm which you can wear either as a pendant or wristband.

The Lifeline unit is linked to an accredited Control Centre who you can contact 24 hours a day, 7 days a week if you need assistance by simply pushing the button on the unit or pendant.

Lifeline can support people who are at risk of falls, worried about safety and security, those who have returned from hospital, older people and those with disabilities including dementia and epilepsy.

"I was coming downstairs and nearly at the bottom when somehow I fell and didn't just land at the bottom of the stairs but fell into the toilet opposite. I was in lot of pain and had bumped my head, my leg and hip. I pressed the button and they sent an ambulance. I had broken my hip and had to stay in hospital. Having the button saved my life, I don't know what I'd do without it."

Miss Hudson, Lifeline customer from Beeston.

If you would like to know more about Lifeline, including a free demonstration or how the Lifeline unit works please contact out dedicated Lifeline Coordinator on **0115 917 3358 / 3990** or by emailing lifeline@broxtowe.gov.uk

Sell your ex-Council property at market value

Are you interested in selling your ex-Council property to the Council at its current market value?

As part of the Council's Housing Delivery Plan, we want to create 230 Council homes over a 10 year period. Since 2019, we have purchased 26 ex-Council properties which have been let to those on the Council's waiting list.

If you would like us to consider buying your property, please email us, including:

- Owner's name
- Full address and post code
- Contact details
- Number of bedrooms
- Type of heating (gas, electric etc.)
- Any alterations on the property. For example, loft conversions, conservatories

We obtain our own independent valuations.

Please note, if your property was purchased under the Right to Buy scheme within the last 10 years, you will need to offer your property back to the Council before you can sell it on the open market.



For further information, please contact the Council's Housing Acquisitions Officer on acquisitions@broxtowe.gov.uk or **0115 917 3623**.



Independent Living

“I love it here, it’s the best thing I’ve ever done.”

Mrs Booth moved in to our Independent Living accommodation after attending an open day last year. Here she tells us why she chose Independent Living and how she’s enjoying her new home.

“Since losing my husband I’ve felt extremely lonely and wouldn’t go out much. At the open day, myself and my daughter looked around the scheme and asked questions about the accommodation and service. I then got involved with the activities and spoke to some tenants. From that moment, I knew that I wanted to live here to be part of the community, feel safe in my home and not be lonely anymore.



The Independent Living Coordinators are fantastic, they supported me when moving in and gave me all the information I needed. You can ring them at any time, and I feel confident approaching them with any issues or questions.

I’ve made new friends and have attended activities regularly. The activities run by Nicky, the Activities Coordinator, are fantastic, she is very creative and a lovely person. I also meet up with tenants every day to have a cup of tea, chat and play games in the communal lounge.

I feel safe living here. I have my own home but knowing that only people who live here and family can access the scheme makes me feel safe.

My daughters are also really happy as they could see I was struggling and becoming very lonely. They said ‘Mum, this is the best thing you could have done. You’re so happy and we’ve really noticed a difference in you’.

It’s nice to have your own space, but good knowing that once you open your front door you have your friends nearby. I love living here.



If you’re interested in Independent Living accommodation or finding out more about the service, visit www.broxtowe.gov.uk/independentliving

Broxtowe Borough Partnership
Tel 0115 917 3492
www.broxtowepartnership.org.uk