



**Broxtowe  
Borough  
COUNCIL**

# Broxtowe Matters

NEWS & VIEWS - MAY 2016

## The Contents:

**Introduction**  
Page 3

**Council Updates**  
Pages 4 & 5

**Business Growth**  
Pages 6, 7 & 8

**Health**  
Pages 9 & 10

**Corporate Plan Special**  
Pages 11, 12, 13 & 14

**Environment**  
Pages 15, 16 & 17

**Housing**  
Pages 18 & 19

**Community Safety**  
Pages 20, 21 & 22

**Useful contacts**  
Page 24



**Broxtowe . . . a great place where people enjoy living, working and spending leisure time.**



Over the past few months, a new Corporate Plan has been developed for 2016-20 which sets out the Council's priorities over the next four years to make Broxtowe a great place.

**You can read more about our priorities and objectives throughout this newsletter and see the new Corporate Plan on pages 11-14.**



# Local care from a local company

Call us on: **0115 9226116**

[www.homeinstead.co.uk/nottingham](http://www.homeinstead.co.uk/nottingham)



Home Instead Senior Care, is an award-winning local company specialising in providing care to people in their own homes. The company opened its office in Nottingham nearly six years ago and provides a full range of services to help people of all ages remain independent.

Recommended highly by the Care Quality Commission for their level of quality service and positive client testimonials. Home Instead delivers care to clients across Nottingham with a wide range of needs. Caregivers have practical experience in supporting clients with conditions such as Alzheimer's, Parkinson's and Diabetes.

The Home Instead Senior Care service allows people to remain at home and lead an independent life. From a few hours a day, up to 24 hours 7 days a week we provide a full care service to match the needs of the individual.



Home Instead are proud to be able to help Mrs G, who recently celebrated her 106th birthday, remain at her home. Mrs G is pictured with her CAREGiver, Bev.



## Services include:

- Companionship
- Light Housekeeping
- Local transportation & errands
- Meal preparation
- Respite support
- Convalescence support
- Shopping
- Personal care
- Specialist dementia & Alzheimer's care and much more...

## Dementia Friendly Communities - Workshops

Research suggests that Dementia affects each individual in different ways however, even at late stages a person can understand what is going on around them. This in turn means that many people with Dementia can continue to live a relatively "normal" life as long as there is adequate support available, not just at home but in the community. This is where Dementia friendly communities can play a major part.

The concept is simple: to improve the quality of life for people with dementia and help them to become active members of the community.

At Home Instead in Nottingham, we have developed a comprehensive training program for our CAREGivers which covers all the aspects of Dementia and provides practical advice and techniques to help those suffering from the disease to continue to enjoy a good quality of life.

Part of this training is now being delivered as **free workshops for families of those suffering from Alzheimer's and other Dementias or anybody who would like to find out more about the disease.**

If you would like to attend one of our seminars please contact us on **0115 9226116** or email: [primo.sule@homeinstead.co.uk](mailto:primo.sule@homeinstead.co.uk)



Home Instead Senior Care, has partnered with national scam awareness charity, Think Jessica, to launch a public education programme to raise awareness of mass market scams and provide tips and advice to educate individuals on how to protect themselves from falling victim to this abuse.

As part of the campaign, the team at Home Instead Senior Care in Nottingham, will be rolling out public workshops in the local area in the coming months. The aim of the workshops is to share information with attendees on the scale of the problem and the most common scams targeting the elderly as well as what to do if they have fallen victim to scammers.

Home Instead has also put together a 'Senior Fraud Protection Kit' which contains information on the most common scams, tools to help assess the risk of an elderly loved one, plus really usefully checklists to help seniors take practical action to lower the risk of becoming victim to a scam.

For more information on upcoming workshops, please contact:

Home Instead Senior Care on  
0115 9226116 or email Gemma;  
[Gemma.Poole@homeinstead.co.uk](mailto:Gemma.Poole@homeinstead.co.uk)

We are looking for CAREGivers who can help us to assist people with non-medical services including Companionship, Home Help and Personal Care in their own home.

Please call **0115 9226116**  
email to [recruitment.nottingham@homeinstead.co.uk](mailto:recruitment.nottingham@homeinstead.co.uk)

# Introduction from the Chief Executive

## Newly adopted Corporate Plan

### This edition contains details about the Borough Council's newly adopted Corporate Plan for 2016-2020.

The main priorities - Housing, Business Growth, Environment, Health and Community Safety - were broadly endorsed by the public through a consultation exercise completed at the end of last year through this newsletter.

There was particularly strong support for objectives such as tackling litter and fly tipping, dealing with anti-social behaviour and working to accelerate the delivery of house building on land which has been previously developed.

The Council is determined not just to grasp the opportunity to complete the regeneration of Beeston Town Centre as soon as possible, but also to look at regeneration opportunities in the towns of Eastwood, Stapleford and Kimberley as well. Stimulating

economic growth through investing in the built environment will be balanced with careful attention to the green infrastructure of Broxtowe and we look forward to adopting the Borough's first Green Infrastructure Strategy in the next few months.

As residents will know, Broxtowe, like all local authorities, faces tough financial decisions. Last September, Cabinet approved a Business Strategy which, when implemented in full, will reduce costs and increase income by up to £1.4m over the next two years. Already, £679,000 in running costs have been saved between 2015/16 and 2016/17 and further measures are in the pipeline.

This is in the context of an overall decline in net funding from



**Ruth Hyde OBE**  
Chief Executive



**Richard Jackson,**  
Leader of the Council

Government of 66% since 2010/11. We will continue to ensure that savings come mostly through modernising the way we provide services and through sharing back office functions with other authorities.

**You can read more about our new Corporate Plan on pages 11 – 14.**

## Have your say in the EU Referendum

On 23rd June voters will be able to have their say on the UK's membership of the European Union in the EU Referendum but you can only have your say if you have registered to vote. The deadline for new applications to register is Tuesday 7th June. Visit [www.gov.uk/register-to-vote](http://www.gov.uk/register-to-vote)

If you will be away on 23rd June you can apply to vote by post or proxy. Just get in touch with our Electoral Services team on **0115 917 3250 or 3276** or email [elections@broxtowe.gov.uk](mailto:elections@broxtowe.gov.uk) for further information.

All voters who vote at a polling station are asked to check details on

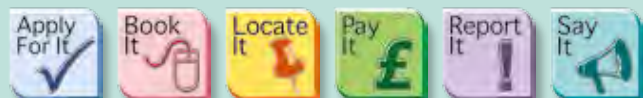


their poll card as some polling station locations may be changed for the Referendum.

**For more information visit [www.broxtowe.gov.uk/elections](http://www.broxtowe.gov.uk/elections)**



### WHY WASTE TIME . . . .



**Do it online . . . [www.broxtowe.gov.uk](http://www.broxtowe.gov.uk)**

## UPDATES

### Improvements at Bramcote Crematorium

Improvements have continued at Bramcote Crematorium over the past few months and memorials can now be purchased online at [www.bramcotebereavement.org](http://www.bramcotebereavement.org)

At the same time, a 24/7 booking service has been introduced for funeral directors to make the process quicker and easier and minimise the impact

on bereaved families.

Over the next few months, the Reflection Chapel will be extended to provide greater capacity and to separate waiting mourners from those using other facilities. LED lighting will also be installed throughout the building, to reduce energy consumption and bills and to demonstrate the Crematorium's commitment to the environment.

**For more information, please contact 0115 917 3489 or email [bramcotecrem@broxtowe.gov.uk](mailto:bramcotecrem@broxtowe.gov.uk)**



### New Councillors

Two new Councillors were elected at by-elections in the Borough in February.

Stephanie Kerry, Conservative, was elected in Toton & Chilwell Meadows and Edward Cublely, also Conservative was elected in Greasley.

**Find out how to get in touch with your local Councillor at [www.broxtowe.gov.uk/yourcouncillor](http://www.broxtowe.gov.uk/yourcouncillor)**



As you read the newsletter you will see the 'EMAIL ME' logo next to services which you can sign up to email updates on [www.broxtowe.gov.uk/emailme](http://www.broxtowe.gov.uk/emailme)



### Hemlock Happening Returns

Hemlock Happening returns on Saturday 11th June at Bramcote Hills Park from 1.00pm until 10.00pm with a host of free activities for all the family including dance, arts and crafts, sports, face painting, fair rides and much, much more. There will

also be stalls from many community groups and organisations as well various catering stalls. This year's performances on the main field will include the three different areas:

- The Main stage - 1.00pm until 10.00pm
- The Performance Arena - 1.00pm until 5.00pm
- The Haven Stage - 1.00pm until 5.00pm

Castle Rock Brewery, who have been involved with the Hemlock Happening from the very beginning will once again be sponsoring the event and providing a bar.

A host of local sponsors have also supported the event, including Central England Co-operative, the Haven centre, Bramcote Hills Community Association,

Nottinghamshire County Council and County Youth Arts.

The event will finish with a fantastic firework finale at 10pm, don't miss out!

The Hemlock Happening is organised each year by Broxtowe Events with the support from the Bramcote and Stapleford Golden Jubilee Group.

**Full event details are available at [www.hemlockhappening.org](http://www.hemlockhappening.org) or contact Broxtowe Events team on [events@broxtowe.gov.uk](mailto:events@broxtowe.gov.uk) or 0115 917 3695.**



**Born in 1926?  
We want to hear from you!**

You're invited to a Right Royal Afternoon Tea Party on Wednesday 8th June to celebrate Her Majesty The Queen's 90th birthday, with other Broxtowe residents who are 90 years old or turning 90 this year.

**If you want to come along, please call 0115 917 3210 or email [civic@broxtowe.gov.uk](mailto:civic@broxtowe.gov.uk)**

# Making Payments to the Council

The Council's Cash Offices in Beeston, Stapleford and Eastwood closed in March and many residents have already switched to alternative payment methods such as online or direct debit.

A secure post box is available at Citizens Advice for residents in the north of the Borough to post Council documents as well as a phone to contact the Council directly.

## Broxtowe Youth Voice

Broxtowe Youth Council has now been re-branded as Broxtowe Youth Voice.

Broxtowe Youth Voice gives young people in the Borough an opportunity to debate the issues affecting them, including alcohol misuse, security in schools, sexual health, self-harming and much more.

There is also a Youth Mayor and Deputy Youth Mayor elected each year. This year's Youth Mayor is 17 year old Ellie Sandy, assisted by Deputy Youth Mayor Samaira Saleem.

If you want to get involved, contact your Head of Year, School Council or email [committees@broxtowe.gov.uk](mailto:committees@broxtowe.gov.uk) or visit [www.broxtowe.gov.uk/broxtoweyouthvoice](http://www.broxtowe.gov.uk/broxtoweyouthvoice)



Ellie Sandy with Mayor of the Borough of Broxtowe 2015/16, Councillor Susan Bagshaw.

# How to pay ...

Online at [www.broxtowe.gov.uk/payit](http://www.broxtowe.gov.uk/payit)

Direct Debit - Download instructions from: [www.broxtowe.gov.uk/payments](http://www.broxtowe.gov.uk/payments)

## Standing Order/Internet Banking

You can pay for **council tax** and **council rents** including housing rent, garage rent and business rates.

Our bank details will be shown on your annual bills / statement.

When setting up your standing order please do not forget to include your reference number (i.e. Council Tax account number).



## Telephone payments using a debit card

24 hour automated payment line on Freephone 0800 952 0040 or via the Customer Services Team on 0115 917 7777

All debit cards are accepted except Visa Electron

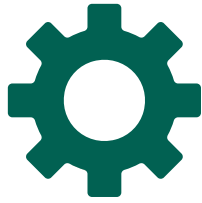
Other services (includes bulky domestic collections, payment for wheelie bins  
PLEASE NOTE: These services are not available on the freephone number.  
Please call 0115 917 7777)

Types of Payment	Online	Direct Debit	Standing Order/ Internet Banking	Telephone
Council Tax	✓	✓	✓	✓
Business Rates	✓	✓	✓	✓
Housing Rent	✓		✓	✓
Garage Rent	✓		✓	✓
Housing Benefit Overpayments	✓			✓
Other Council Invoices including Trade Waste, Housing Benefit, Allotments	✓			✓
Garden Waste Service	✓			✓
Bulky Waste	✓			✓
Lifeline	✓	✓		✓

Cash payments will be possible using an electronic self-service kiosk at Beeston Council Offices.

For more information please contact Customer Services on 0115 917 7777 or email [customerservices@broxtowe.gov.uk](mailto:customerservices@broxtowe.gov.uk)

## BUSINESS GROWTH



### The Best Of Broxtowe Borough

Local heroes were honoured at the Best of Broxtowe Borough awards earlier this month, celebrating local people and businesses in Broxtowe. They were organised by Broxtowe Borough Council in conjunction with The Nottingham Post.

From those who go the extra mile for the local community in Broxtowe to those who always give service with a smile at their local business, local people were at the heart of the process and were invited to nominate their local heroes to give them the recognition they deserve.

Nominations were then shortlisted by a judging panel and the winners were announced at the special awards ceremony at Beeston Fields Golf Club on 12th May. Local businesses sponsored the awards.

### The winners were:

#### Young Achiever Award:

Winner: **Xander Goodwin**  
 Runner Up: **The Bramcote School Y9 Netball Team**  
 Runner Up: **Emily Redfern**



*Xander Goodwin*

#### Sports Personality of the Year:

Winner: **Matthew Ellis**  
 Runner Up: **Colin Eastwood**  
 Runner Up: **Team Blue Blood**

#### Small Business of the Year:

Winner: **Double Image Photography**  
 Runner Up: **Cycle Inn**  
 Runner Up: **Onyx Goldsmiths**

#### Retailer of the Year:

Winner: **Chimera**  
 Runner Up: **Mrs Bishop's Doggy Deli**  
 Runner Up: **Nottinghamshire Wildlife Trust**



#### New Business of the Year:

Winner: **The Hidden Bakery**  
 Runner Up: **Greenhood Coffee House**  
 Runner Up: **Time for Tea**

#### Local Website of the Year:

Winner: **Stapleford Fire Station Facebook Page**  
 Runner Up: **Beeston Film Festival**  
 Runner Up: **TEK Kickboxing Academy**

#### Local Hero Award:

Winner: **Dawson Saxton**  
 Runner Up: **Sharon Hands**  
 Runner Up: **Rick Harrington**

#### Health, Hair & Beauty Retailer of the Year:

Winner: **Euphoria**  
 Runner Up: **The Beauty Lounge**  
 Runner Up: **Blend Barbers**

#### Food & Drink Establishment Award:

Winner: **Edwards Canteen & Kitchen**  
 Runner Up: **Lime Indian Restaurant**  
 Runner Up: **Local Not Global Deli**



With grateful thanks to our award sponsors:-



#### Family Business of the Year:

Winner: **Gillotts Funeral Directors**  
 Runner Up: **Fred Hallam's Ltd**  
 Runner Up: **Shabbylicious Vintage Tearooms**

#### Enabling the Community:

Winner: **Broxtowe Youth Homelessness**  
 Runner Up: **The Haven**  
 Runner Up: **Alison Dobbs**

#### Pride of Broxtowe Borough:

Winner: **Dawson Saxton (right)**



For more information, 0115 917 3043, email [towncentres@broxtowe.gov.uk](mailto:towncentres@broxtowe.gov.uk) or visit [www.broxtowe.gov.uk/bestofbroxtowe](http://www.broxtowe.gov.uk/bestofbroxtowe)

## Work Experience For 100 Construction Students

A partnership between the Council, its construction partner United Living and Central College Nottingham will have seen one hundred work placements offered by the end of the academic year.

Around three construction students a week from the college are being offered practical experience and an opportunity to gain valuable skills in a range of trades including plumbing, joinery, painting, plastering and electrical work.

The students' efforts will support local communities in residential areas that are administered by Broxtowe Council's Housing Modernisations Contract, including the replacement of kitchens and bathrooms,

as well as upgrades to electrical installations.

Thomas Orrey, 19, has already secured a full-time apprenticeship thanks to the scheme and the initiative was shortlisted for two awards at the Building Communities in the East Midlands (BCEM) awards in the Collaborative Working and Innovation categories.

**For more information, please contact Broxtowe Borough Council on 0115 917 3659 or visit [www.broxtowe.gov.uk/modernisations](http://www.broxtowe.gov.uk/modernisations)**

*Mayor of the Borough of Broxtowe 2015/16, Councillor Susan Bagshaw joins Chris Harrison from United Living and Broxtowe Borough Council's Dave Wadsley with Akeem Stephens, Bricklaying student.*



### OBJECTIVES

Increase the number of new businesses starting in Broxtowe.



### OBJECTIVES

Help our town centres to compete and attract new visitors.



### OBJECTIVES

Complete the regeneration of Beeston town centre and seek opportunities to regenerate town centres throughout Broxtowe.

# TREAT YOURSELF

GET PAMPERED AT A FRACTION OF THE COST

CHOOSE FROM A VARIETY OF HAIR AND BEAUTY TREATMENTS.

WE HAVE A FULL RANGE OF PROFESSIONAL PRODUCT LINES AND INDUSTRY STANDARD EQUIPMENT.

#### BEESTON SALON

HIGH ROAD, CHILWELL,  
BEESTON, NOTTINGHAM,  
NG9 4AH

0115 884 2434

RING TO MAKE AN  
ENQUIRY OR TO BOOK  
AN APPOINTMENT.

salon  
Central

10% OFF  
YOUR FIRST  
HAIR OR BEAUTY  
TREATMENT.

Salon Central is part of



Central College  
Nottingham

Please bring this advert with you on your next visit to claim your 10% off.  
Visit [centralnottingham.ac.uk/saloncentral](http://centralnottingham.ac.uk/saloncentral) for a full price list.

## BUSINESS GROWTH

### What's Happening In Our Town Centres

A Town Centre Team has been established to improve Beeston town centre, including support for businesses and unique monthly events to showcase the town. A leap year proposal took place on 29th February as Michelle Bakewell proposed to Wayne Barker in The Square, after 17 years together. Wayne said yes and to celebrate, many businesses donated gifts to the happy couple.

A new market operator, art and craft fairs.org, has been secured to ensure a regular market continues in Eastwood and businesses continue to run their own Facebook page at [www.facebook.com/eastwoodtowncentre](http://www.facebook.com/eastwoodtowncentre) promoting the town centre, showcasing local business and posting the latest news and events.

High street expert Bill Grimsey visited

Stapleford in December and since then the Town Team have organised an open brainstorming session to identify unique selling points and help inform a business plan for the town centre.

The Council will be supporting Kimberley Regeneration Group's 'Summer Series' for its second year, with events including:

- Saturday 18th June - The Kimberley Jam Music Festival
- Saturday 23rd July - Kimberley Summer Fun Day
- Saturday 20th August - Sci-Fun 2016
- Saturday 17th September - Kimberley Heritage Day

### Town Centre Markets

Location	Time	Days
Beeston Market, The Square	9.00am – 3.00pm	Mondays
Beeston Market, The Square	8.00am – 4.00pm	Wednesdays
Eastwood Market, The Hollies	8.00am – 4.00pm	Thursdays
Stapleford Farmers Market, Walter Parker V.C. Square	9.00am – 2.00pm	First Saturday of every month
Beeston Farmers Market, The Square	9.00am -2.00pm	Third Saturday of every month

Want to register your interest in a stall? Visit [www.broxtowe.gov.uk/markets](http://www.broxtowe.gov.uk/markets)

### Town Centre Occupancy Rates

Location	% Occupied Shop Units	+/- Against National Average
Beeston Town Centre	94%	+4.8%
Eastwood Town Centre	92%	+0.6%
Kimberley Town Centre	91%	+1.0%
Stapleford Town Centre	89%	-1.1%

Ground Floor Retail & Leisure occupancy rates. Figures taken March 2016. Average Vacancy Rate in the UK was 10.2%.

Visit [www.broxtowe.gov.uk/towncentres](http://www.broxtowe.gov.uk/towncentres) for monthly occupancy figures or Beeston's weekly footfall figures.

For more information, 0115 917 3446, email [towncentres@broxtowe.gov.uk](mailto:towncentres@broxtowe.gov.uk) or visit [www.broxtowe.gov.uk/towncentres](http://www.broxtowe.gov.uk/towncentres)



Got a business question?

@MyIncVentures

# Chat live to a business advisor for FREE!

Residents of Broxtowe Borough Council can now access the award-winning, live chat business advice service, Mi Ventures.

Available Mon - Fri, 9am - 5pm (excluding Public Holidays)

[www.broxtowe.gov.uk/business](http://www.broxtowe.gov.uk/business)  
click on 'Business Advice' to access this service





## Celebrate The Olympics By Getting Active

The Olympic and Paralympic Games are approaching and there's never been a better time to get active.

### Movement to Music – keeping healthy as you get older

Regular activity can help keep your independence and reduce the risk of falls. Broxtowe Sport offer a number of Movement to Music classes aimed at the over 50's which use a mixture of seated and standing exercises including aerobics, Zumba and stretching to a mixture of retro music. Classes cost £2 per person and take place at various locations in Chilwell, Toton, Trowell, Beeston and Bramcote. [www.broxtowe.gov.uk/olderadults](http://www.broxtowe.gov.uk/olderadults)



*Priory Celtic Mums Football*

### Walking Sports – sport at your pace!

You can now play the sports you love, at a slower pace with one of our Walking Sports sessions including football, netball, rugby and cricket. Ideal for the over 50s, they take place across the borough [www.broxtowe.gov.uk/olderadults](http://www.broxtowe.gov.uk/olderadults)

### Activities for Young People with Disabilities and Inclusion Needs

A range of activities are on offer in partnership with local leisure centres and sports clubs, from swimming, football and fitness to a multi-sports club with Foxwood Academy where sports change each term [www.broxtowe.gov.uk/inclusion](http://www.broxtowe.gov.uk/inclusion)

### Broxtowe Girl's Can

There are a number of ladies only sports sessions including Beginners & Back to Netball Sessions at the George Spencer Academy, Stapleford and Kimberley Leisure Centre and Back to Football sessions at Chilwell Olympia Sports Centre and Kimberley Leisure Centre [www.broxtowe.gov.uk/women](http://www.broxtowe.gov.uk/women)

### Only 'Girls Aloud'!

Girls aged 11 – 16 years can get active at Kimberley Leisure Centre and Chilwell Olympia Sports Centre as part of the Borough's Us Girls programme. Try dodgeball, archery, martial arts, trampolining, Zumba and more at Kimberley Leisure Centre and Chilwell Olympia Sports Centre [www.broxtowe.gov.uk/women](http://www.broxtowe.gov.uk/women)

For more information about what activities are right for you visit [www.broxtowe.gov.uk/exercise4me](http://www.broxtowe.gov.uk/exercise4me) or contact Broxtowe Sport on 0115 917 3572 or email [sport@broxtowe.gov.uk](mailto:sport@broxtowe.gov.uk)

## Gemma Gets Fit With Baby

After having daughter Isabella in April 2015, Gemma was nervous about getting back into exercise but after recovering from the birth she started taking part in Bring Baby classes at Bramcote Leisure Centre, as well as the Buggy Walks over the summer at Attenborough Nature Reserve.

"I would definitely recommend the 'Bring Baby' exercise classes to other new mums, they are a great way of easing your way back into fitness. The instructors are friendly, help you feel comfortable and are able to advise you on what exercises are best for you" says Gemma.

"The classes are a great way of having a bit of 'me' time without any guilt because your baby is right there with you whilst you take part in the exercise! Not only is it a great opportunity to build up your body confidence again, but it's also a great

way to meet other new mums."

Gemma also took part in the Bumpercise classes during her pregnancy and enjoyed being able to meet other mums-to-be.

For more information visit [www.broxtowe.gov.uk/newmums](http://www.broxtowe.gov.uk/newmums)



*Gemma and Baby Isabella*



### OBJECTIVES

Increase the number of people who have active lifestyles.



### OBJECTIVES

Work with partners to improve the health of the local population.

## HEALTH

### Free Connect Service – Giving you the support you need

The Connect service offers support to help people live independently in their home in Broxtowe, Gedling and Rushcliffe. Everyone can struggle to cope from time to time, whether it's illness, anxiety, loneliness, housing problems or financial problems, their support includes:

- Improving your health and wellbeing
- Helping you to maintain your independence

- Guidance on managing your money
- Ensuring you have a safe and secure home
- Getting you more involved in your community

**If you need help from Connect, call Metropolitan now on 0115 939 5406 or visit [www.metropolitan.org.uk/support-services/connect](http://www.metropolitan.org.uk/support-services/connect)**

### 'HOT' new scheme for Healthy Takeaways

Takeaway businesses across Nottinghamshire are being supported to offer healthier choices to their customers in a Healthier Options Takeaway merit (HOT) scheme.

The scheme was launched at Beeston's The Food Bar earlier this year by Nottinghamshire County Council and Environmental Health partners at Nottinghamshire's district and borough councils.

The scheme aims to reduce obesity across the county and rewards businesses that prepare their food in a healthier way, from finding alternatives to frying

food and switching to wholegrain pasta and bread, to promoting water and low sugar drinks.

Currently four businesses in Broxtowe have been awarded the HOT merit scheme -

The Food Bar in Beeston, Jack Wood Butchers in Eastwood, Dunn Lite Foods, also in Eastwood and Grill Go in Toton

**For more information visit [www.nottinghamshire.go.uk/hot](http://www.nottinghamshire.go.uk/hot)**



**Representatives from Broxtowe Borough Council and Nottinghamshire County Council join Joe Quigg, owner of The Food Bar in Beeston at the scheme launch.**



### Support for Men Affected by Domestic Abuse

Local charity Equation has set up a Domestic Abuse Service for Men.

The type of support provided includes safety advice, emotional support and support to access services and advice about civil and criminal options.

Men aged 18 and above who live within the County of Nottinghamshire are able to access the service and referrals can be made by any professional working with a male who has disclosed domestic abuse

or men can self-refer into the service.

Equation is an independent charity which works with partners to prevent and reduce the harm caused by domestic violence and sexual abuse throughout the City and County.

**If you are experiencing domestic abuse and want to access this service please call on 0115 960 5556, 9.00am - 4.30pm weekdays, 24 hour answer phone or visit [www.equation.org.uk](http://www.equation.org.uk)**

### Legal Surgery for Domestic Abuse

Broxtowe Women's Project now offer drop in legal surgeries for women to access free legal information and advice in cases of domestic violence and abuse thanks to a partnership with Nelsons Solicitors, family law specialists.

The sessions take place on Wednesdays from 9.30am – 2.30pm and offer:

- A private, safe space to talk through their concerns
- A chance to find out more about the legal options available to them



- An opportunity to obtain free legal advice in an emergency situation,
- Free impartial legal advice on a range of civil matters

**For more information or to book an appointment please contact Broxtowe Women's Project on 01773 718555 or visit [www.broxtowewomensproject.org.uk](http://www.broxtowewomensproject.org.uk)**



# Broxtowe Borough Council Corporate Plan 2016-2020

*Broxtowe . . . a great place where people enjoy living, working and spending leisure time.*

## Making Broxtowe a great place

Our new Corporate Plan has been developed for 2016-20 setting out our priorities over the next four years to achieve our vision to make “Broxtowe a great place where people enjoy living, working and spending leisure time.”

Over the next few years, we will focus on the following priorities:

-  Housing
-  Business Growth
-  Community Safety
-  Health
-  Environment

## Developing the plan

A consultation of the draft priorities and objectives for the new plan took place last year, both online and through this newsletter.

Residents broadly endorsed the key themes in the plan and an evidence base of key data was also used to come up with the objectives.

Of course one of the biggest challenges will be working with continuing budget reductions and the Plan has been designed to prioritise local community needs so that we use your money on the things you think are most important.



# CORPORATE PLAN 2

Broxtowe...a great place where people enjoy living and spending leisure time.

## OUR PRIORITIES:

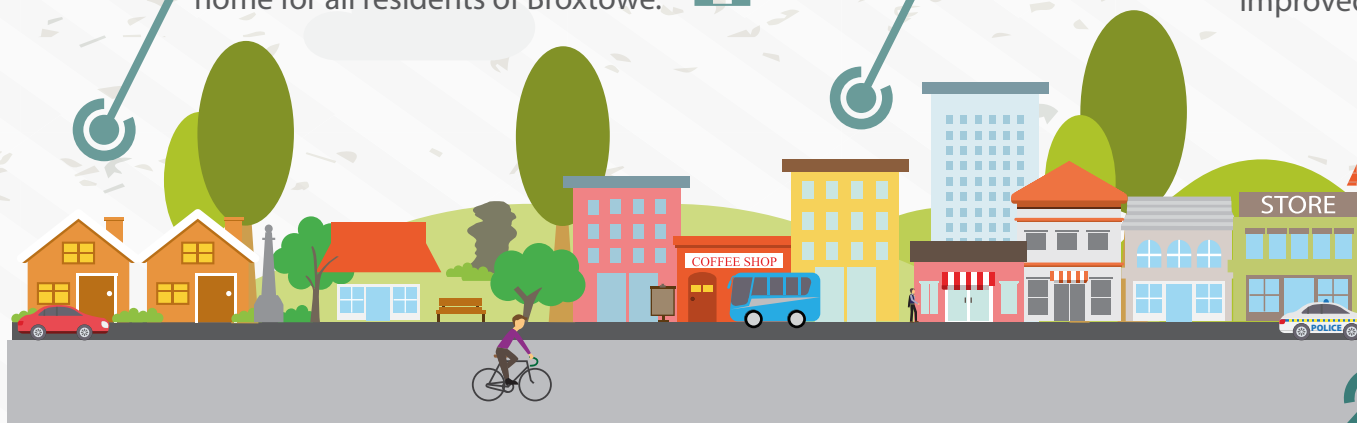
### HOUSING

A good quality affordable home for all residents of Broxtowe.



### BUSINESS GROWTH

New and growing businesses, more jobs for people in the area, improved infrastructure.



### COMMUNITY SAFETY


Broxtowe will be a place where people feel safe and secure in their communities.



### HOUSING

- Increase the rate of house building on brownfield sites 
- Become an excellent housing provider
- Improve the quality and availability of the private sector stock to meet local housing need

### COMMUNITY SAFETY

- Reduce the amount of anti-social behaviour in Broxtowe 
- Reduce domestic violence in Broxtowe

### BUSINESS

- Increase the number of new businesses starting in Broxtowe
- Help our towns to compete and attract visitors
- Complete the regeneration of Beeston town and seek opportunities to regenerate throughout Broxtowe

# 2016 - 2020

## Planning, working



**Broxtowe  
Borough  
COUNCIL**

Businesses providing services in Broxtowe and town centres.



### ENVIRONMENT

The environment in Broxtowe will be protected and enhanced for future generations.



### HEALTH

People in Broxtowe enjoy longer active and healthy lives.



### GROWTH


Number of businesses in Broxtowe town centres to attract more regeneration opportunities to town centres in Broxtowe



### ENVIRONMENT

- Reduce litter and fly tipping to make Broxtowe cleaner 
- Maintain and improve the green infrastructure of Broxtowe
- Increase recycling, composting and energy renewables/efficiency projects as resources allow

### HEALTH

- Increase the number of people who have active lifestyles 
- Work with partners to improve the health of the local population
- Reduce alcohol related harm in Broxtowe

Read the full plan at [www.broxtowe.gov.uk/corporateplan](http://www.broxtowe.gov.uk/corporateplan)

# The Council is changing

## The Council's Operating Model

The way the Council conducts its business is changing fast, keeping pace with the need to adapt to face the rapidly changing context in which it is operating.

Over the past few years, we have evolved and now have fewer departmental divisions and continued partnership arrangements.



## Governance and Checks

We believe that we should be accountable for our activities and actions and a comprehensive governance system is in place to ensure that the Council is effectively regulated, conforms to good practice in its decision making and that our residents can challenge us and become engaged in democracy.

Here are some of the ways that both our Officers and Elected Members are checked and accountable to you. You can read more at [www.broxtowe.gov.uk/governance](http://www.broxtowe.gov.uk/governance)



## Stay Informed about Your Council

The Council has a responsibility to ensure that decision-making is as effective as it can be and that Officers and Elected Members are accountable to the people they serve.

Broxtowe has recently moved to a Committee system, which means that most decisions are made in committees, which are made up of a mix of councillors from all political parties.

Public meetings take place every month about things like planning, licensing and more. Council meetings are also held in the Council Chamber, which are open to the public.

To find out what meetings are coming up visit [www.broxtowe.gov.uk/committees](http://www.broxtowe.gov.uk/committees)





## OBJECTIVES

Reduce litter and fly tipping to make Broxtowe cleaner.

# ENVIRONMENT



## 100,000 Trees Planted

Pupils from Springbank Primary School helped mark an historic day earlier this year as they planted the 100,000th new tree in Broxtowe, reaching the Council's target to plant 100,000 trees by 2016.

The children joined Mayor of the Borough of Broxtowe 2015/16, Councillor Susan Bagshaw to plant the oak tree in Jubilee Park, Eastwood.

The tree was one of three large English Oaks and 100 smaller mixed native trees to be planted at the park. Similar plantings also took place in parks, Kimberley and Stapleford.

**For more information, please contact Broxtowe Borough Council on 0115 917 3507, email [grounds@broxtowe.gov.uk](mailto:grounds@broxtowe.gov.uk)**



**Representatives from Broxtowe Borough Council, Greenwood Community Forest and United Living join Y5 pupils at Springbank Primary School to plant the 100,000th tree.**



## Green Award For Broxtowe

The Council has received 'Green' accreditation from Investors in the Environment for its commitment to reducing the carbon footprint within the Borough and dedication to preserving and reducing its impact on the environment for future generations.

The accreditation is supported by the Council's Environmental Policy which aims to reduce carbon emissions by 2% each year. As part of this commitment, Broxtowe currently purchases electricity from renewable sources for all of its buildings.

**For more information contact 0115 917 3742 or email [hfps@broxtowe.gov.uk](mailto:hfps@broxtowe.gov.uk)**



## Greenwood Grant Helps Brinsley Green Space to Plant!

Kings Drive Green Space Group in Brinsley planted native trees during National Tree Week thanks to a grant from the Greenwood Community Forest Team to help improve the area and benefit wildlife.

Ann Scothorne, from the Green Space group, said: "We can't thank the Greenwood Team enough

for this grant, it's going to improve our green space for residents, visitors and wildlife. We are also grateful for the support we have been given through the grant process."

**To register for next year's Community Tree Planting Grant scheme contact [greenwood@nottsc.gov.uk](mailto:greenwood@nottsc.gov.uk)**



**Kings Drive Green Space group planting their trees funded by a Greenwood Community Tree planting Grant**

## Cycling and Walking Trails in Broxtowe

Broxtowe boasts beautiful cycling and walking trails that you can enjoy for leisure or during your commute to work, including the Erewash Valley Trail and Broxtowe Country Trail.

The Broxtowe Country Trail was officially opened on the 6th April and follows the boundary between Broxtowe Borough and Nottingham City, providing 27 miles of walking and cycling routes and linking Heritage sites including the D.H. Lawrence Museum, Brinsley Headstocks and Wollaton Hall. It also connects with the Erewash Valley Trail.

**Free Cycling Goody Bag for the first 10 people who live in the Borough**

**of Broxtowe to call and request a Broxtowe Country Trail leaflet!!**

**For more information or to request a copy of the Broxtowe cycle map or information about other trails contact 0115 917 3742 or visit [www.broxtowe.gov.uk/cycling](http://www.broxtowe.gov.uk/cycling) or [www.broxtowe.gov.uk/walking](http://www.broxtowe.gov.uk/walking)**



# ENVIRONMENT



## OBJECTIVES

Maintain and improve the green infrastructure of Broxtowe.

### What's New - Parks & Open Spaces



#### Planting Plenty Campaign

Following the success of the 100,000 tree initiative, a new campaign has been launched to help improve the landscaping on parks, open spaces and other green areas throughout the Borough. This will include bulb, wildflower and annual displays on verges as well or more traditional planting. If you have a favourite local space in the Borough that you think could be improved with additional planting get in touch.

#### Coronation Park Skate Park, Eastwood

Despite some challenges, the new skate park is almost complete. The concrete bowl design will challenge experienced skaters and beginners alike and is also suitable for BMX bikers, in line skaters and scooters.

An official opening will take place in early Summer.

#### Praise for Broxtowe Parks

The Council has been recognised for the quality of its parks and open spaces, after picking up the Most Improved Performer Award for Parks, Open Space and Horticultural Services at the Association of Public Services Excellence (APSE) Performance Network Awards, the second time the team has won the award since 2012.

#### Long Lane Recreation Ground, Attenborough

A fully refurbished children's play area has opened on the site thanks to partnership working between the Council and Groundwork Greater Nottingham. The improvements were funded by Waste Recycling Environmental (WREN) and has proved to be very popular so far.

#### Brinsley Headstocks

£32,650 has been secured from WREN for access improvements including new gates, footpath surfacing and new steps, as well as interpretation boards and habitat improvements. The work has been undertaken working closely with the Friends Group who help manage the open space as a Community Green Flag site.



#### Pit Lane Recreation Area, Trowell

The site has been officially declared a Local Nature Reserve, making a total of 15 Local Nature Reserves in the Borough. The former opencast site is a valuable link connecting five of the Council's Local Nature Reserves within the Erewash Valley.

#### Clean for the Queen

Local people helped ensure that Broxtowe was fit for the Queen at a special day of litter picking earlier this year as part of a national 'Clean for the Queen' campaign ahead of her 90th Birthday. Volunteers helped clean the Council's four designated Queen Elizabeth II Playing Field sites.



Contact our Parks Team on 0115 917 3507, email [grounds@broxtowe.gov.uk](mailto:grounds@broxtowe.gov.uk)





## Garden Waste Collection Service – Great Value, Great Service

If you've been out in the garden over the spring, why not join our garden waste

subscription service – still only £30.00 with all year round, fortnightly kerbside collections. Additional bins are £10.00 each,

Save the hassle of having to register at your local waste and recycling centre by signing up today at [www.broxtowe.gov.uk/gardenwasteform](http://www.broxtowe.gov.uk/gardenwasteform) or call **0115 917 7777** and choose option 3.

Nottinghamshire residents now need to **register** to use the county's recycling centres.

Register\* for free now at [nottinghamshire.gov.uk/registerstorecycle](http://nottinghamshire.gov.uk/registerstorecycle) or call **0300 500 80 80**.

**REGISTERED**

\*Registration is only open to Nottinghamshire residents (excluding Nottingham City).

Nottinghamshire County Council

working with **VEOLIA**

## 'Just Imagine' what your recycling could become

A 'Just Imagine' workshop took place at Attenborough Nature Reserve's Family Spring Event recently, giving people the chance to think about the waste they produce and re-using items

to make some amazing new creations.

The next session will take place at the Hemlock Happening at Bramcote Hills Park on 11th June.



**EMAIL ME**

## Help! What plastics can I recycle?



Deciding which plastic items are recyclable can be confusing. Here's what you can recycle in the green-lidded bin

For more information about recycling visit [www.broxtowe.gov.uk/recycling](http://www.broxtowe.gov.uk/recycling) or email [recycling@broxtowe.gov.uk](mailto:recycling@broxtowe.gov.uk)

**EMAIL ME**

## OBJECTIVES



Increase recycling, composting, renewables and energy efficiency projects as resources allow and reduce residual waste.

## Love Broxtowe? Fight Flytipping

You rated reducing litter and fly tipping to make Broxtowe cleaner as one of your top priorities and the Council is committed to tackling this issue.

Fly tipping not only impacts on the local environment and natural habitat for wildlife, it also costs around £10,000 each year to remove.

Fly-tipping is illegal and the Council will prosecute anyone caught fly-tipping in the borough under the Environmental Protection Act 1990. Those found guilty of fly-tipping can be fined up to £50,000 and face 12 months in prison in a magistrates court or up to 5 years in a crown court and an unlimited

fine for fly tipping offences.

If you spot any environmental issues in the Borough including fly-tipping, dog mess and litter report it online using our Love Broxtowe web app at [www.broxtowe.gov.uk/lovebroxtowe](http://www.broxtowe.gov.uk/lovebroxtowe)



Love Broxtowe

Broxtowe Borough COUNCIL

**SPOTTED AN ENVIRONMENTAL ISSUE?**

• Fly-tipping? • Graffiti? • Dog mess? • More?

Report it online with Love Broxtowe

[www.broxtowe.gov.uk/lovebroxtowe](http://www.broxtowe.gov.uk/lovebroxtowe)

## HOUSING



### Housing Team Award Success



**Sarah Bird and Claire Reed from Broxtowe Borough Council with Richard Macrae and Adrian Pavey from Nationwide Windows.**

The Council's Housing team was recently nominated for three awards in the coveted Building Communities in the East Midlands Awards.

Richard MacRae won 'Tenant of the Year' and the team was also shortlisted in the 'Corporate Responsibility' and 'Team of the Year' categories.

Modernisations contractors, United Living, were also nominated for 'Collaborative Working' and were runners up in the 'Innovation' category.

The awards were a celebration of the collaborative working that goes into providing high quality service provision and exceptional maintenance and asset management programmes, which in turn helps build communities.

**For more information, please contact 0115 917 7777 email [housing@broxtowe.gov.uk](mailto:housing@broxtowe.gov.uk) or visit [www.broxtowe.gov.uk/housing](http://www.broxtowe.gov.uk/housing)**

### Putting You at the Heart of Housing

Residents are central to our Housing service and are best placed to tell us what works well and what could work better. Resident Involvement enables the needs, priorities and aspirations of residents to form the basis of service development.

To help the Council achieve this, a new Resident Involvement Strategy has been developed.

Some of the commitments include:

- Reviewing customer satisfaction surveys
- Reviewing how consultation results are captured and used to inform service developments

- Identifying training needs of residents to inform development of training provision
- Formalising scrutiny role of Service Review Groups
- Development of community level meetings to enable engagement with more residents
- Promotion of the Consultation Database and development of how it is used to capture views and inform service development
- Further development of Estate Roadshows

**For more information, please contact 0115 917 3259 email [housing@broxtowe.gov.uk](mailto:housing@broxtowe.gov.uk) or visit [www.broxtowe.gov.uk/housing](http://www.broxtowe.gov.uk/housing)**

**NO<sup>0%</sup> estate agency fees to pay**  
when you sell by our quick sale service



For a FREE valuation call

Beeston: 0115 9677329 Kimberley: 0115 9385464





## OBJECTIVES

Increase the rate of house building on brownfield sites.

## Apply For Your Benefits Online

You can now apply for housing benefits and Council tax reduction online, making it easier than ever before no matter where you are or what time of day it is

The online form at [www.broxtowe.gov.uk/benefitsclaim](http://www.broxtowe.gov.uk/benefitsclaim) is intelligent so claimants will only have to answer the questions that are relevant to them and when they complete the form it will state what evidence they are required to submit to the Council in order to verify the claim. In some cases, this means they can supply the required information online at the same time as completing the form, which means the claim can be assessed quicker and their benefits can be paid quicker.

**For more information contact 0115 917 7777, email [benefits@broxtowe.gov.uk](mailto:benefits@broxtowe.gov.uk) or visit [www.broxtowe.gov.uk/benefitsclaim](http://www.broxtowe.gov.uk/benefitsclaim)**

## Are you a Private Sector Landlord or considering becoming one?

Renting out your house can be an excellent option BUT it is essential you are fully aware of your responsibilities and duties as a landlord.

There have been several legislative changes over the last two years in relation to the private rented sector.

**To ensure you are fully aware of all the changes please do not hesitate to contact Broxtowe Borough Council's Private Sector Housing Team for free information or advice on 0115 917 3438 or email [health@broxtowe.gov.uk](mailto:health@broxtowe.gov.uk)**



## OBJECTIVES

Become an excellent housing provider.

## Christmas Hamper Appeal

Thank you to everyone who helped raise money for the third annual Christmas Hamper Appeal in December 2015 – it was a bumper year, with 90 hampers and Santa sacks delivered to families in the Borough who needed a helping hand.

The Council's contractors Vinshire Plumbing and Heating, United Living and Ian Williams all donated

£1,000 each towards the appeal which was used to buy toys and books, as well as standard food items such as soups, beans, rice, pasta, tea coffee and sugar.

Employees at the Council also donated food items and were able to nominate families and elderly people they thought would benefit from the hampers.

Local businesses and residents also lent a helping hand to raise £2,000 for additional toys and food items to supplement the hampers, including Tesco Toton who hosted a toy appeal.

**For more information, please contact 0115 917 7777, email [housing@broxtowe.gov.uk](mailto:housing@broxtowe.gov.uk) or visit [www.broxtowe.gov.uk/housing](http://www.broxtowe.gov.uk/housing)**

## Clean for the Queen



A special 'Clean for the Queen' event took place at Ulldale Court in Chilwell in March as part of a national campaign to celebrate Her Majesty's 90th birthday.

The Council teamed up with United Living and Vinshire Heating and Plumbing Ltd to help residents tidy up the area, including a skip for household and garden

waste and help moving and disposing of bulky items.

The event followed on from other previous neighbourhood clean-up days including as part of National Housing Day on 18th November.

**For more information, please contact 0115 917 7777, email [housing@broxtowe.gov.uk](mailto:housing@broxtowe.gov.uk) or visit [www.broxtowe.gov.uk/housing](http://www.broxtowe.gov.uk/housing)**



## OBJECTIVES

Improve the quality and availability of the private sector housing stock to meet local housing need.

# COMMUNITY SAFETY



## OBJECTIVES

Reduce the amount of anti-social behaviour in Broxtowe.

### Eastwood Top Priority for Partnership

Eastwood has been top of the agenda for a multi-agency task group who have been working together to help make the town a safer place.



Organisations including Broxtowe Borough Council, Nottinghamshire Police, Nottinghamshire County Council, Nottinghamshire Fire and Rescue, Nottingham West Clinical Commissioning Group, Citizens Advice Broxtowe and many more have all been involved in delivering the South Nottinghamshire Community Safety Partnership Action Plan, to tackle issues such as crime and anti-social behaviour.

Eastwood South is one of three areas in South Nottinghamshire to receive funding from the Police and Crime Commissioner to address priority issues. Initiatives have included a shop watch radio scheme, where the devices are used by businesses to contact each other instantly to alert each other when shop lifters are in store.

Eastwood residents were also asked to have their say on issues affecting the local area, including employment, education, services and crime as part of a consultation to help

inform future action plans in the town at the end of last year as part of a project between Broxtowe Borough Council, Nottinghamshire Police and students from the University of Nottingham.

The Council works closely with partners and Nottinghamshire Police to tackle anti-social behaviour and crime in Eastwood and initiatives have included diversionary activities for young people during the school holidays, community safety drop-in sessions, promotional campaigns to help encourage local people to report crimes and the use of neighbourhood alert messaging by local beat teams.

**For more information on the South Notts Community Safety Partnership and the Broxtowe Borough Partnership, please contact [spc@broxtowe.gov.uk](mailto:spc@broxtowe.gov.uk) or visit or [www.broxtowe.gov.uk/partnership](http://www.broxtowe.gov.uk/partnership) or [www.broxtowe.gov.uk/communitysafety](http://www.broxtowe.gov.uk/communitysafety)**

### Police Award For Broxtowe Employee



**Councillor Mia Kee; Tony Burton and Mayor of the Borough of Broxtowe 2015/16, Councillor Susan Bagshaw.**

A Broxtowe Borough Council's employee has received a special award from Nottinghamshire Police after he prevented a member of the public from jumping off the bridge onto the M1 motorway at Trowell.

Tony Burton, one of the Council's Licensing Enforcement Officers was carrying out his duties with a Police Officer when he talked the gentleman to a place of safety and stayed with him until the emergency services arrived.

Police Divisional Commander, Chief Superintendent Mark

Holland said in a letter to Tony: "Without thought for your own safety, you and Paul immediately became involved, stopping traffic and notifying police control for assistance. The male was clearly distressed and you spoke to him and eventually encouraged him to a place of safety. You then looked after the male until the arrival of police officers. Your involvement prevented not only the certain death of this male but avoided possible further injury of road users below and avoided a great deal of police resources being utilised to deal with the matter."

Broxtowe Matters is published twice a year by Broxtowe Borough Council and the Broxtowe Borough Partnership to keep residents informed about its services and the work it does in the borough.

It costs just 18.5p per copy to print and distribute Broxtowe Matters to more than 50,000 homes and businesses in the Borough. It is produced from sustainable

resources from managed forests so that new trees grow to replace the wood cut for pulping. If you do not wish to keep this magazine for future reference, please recycle it in your green-lidded recycling bin.

Broxtowe Matters is printed by Systematic Print Management, an independent company, and distributed by the Royal Mail.

We welcome your comments and views so if you would like to make a comment about this newsletter please contact Broxtowe Borough Council's Corporate Communications Team on **0115 917 3825**.

Advertising for this newsletter has been sourced by Spot On Media Ltd. The Council does not endorse any products or services advertised through this publication.

## Nottinghamshire is the Best Bar None



Representatives from the Best Bar None Scheme pick up their award.

A scheme which recognizes and rewards responsible pubs, bars and clubs in Nottinghamshire has been highly commended at a National award ceremony.

Nottinghamshire's Best Bar None scheme was shortlisted in two categories for Best New Scheme and Most Innovative Scheme.

The scheme in Nottinghamshire, which launched in 2015, is the country's first county-wide scheme and it has been co-funded by the Police and Crime Commissioner and

Nottinghamshire County Council.

To be awarded a 'Best Bar None' accreditation, premises are visited by trained assessors who not only look at core standards but also note where premises have gone the extra mile to ensure customer safety and comfort such as handbag hooks under tables, CCTV cameras, looking at ways to stop drug and alcohol misuse in premises, consulting neighbours over events and ensuring noise is

kept to a tolerable level.

**For more information, please contact the Scheme Co-ordinator on 0843 866 7282 or email [info@nottinghamshirebbn.com](mailto:info@nottinghamshirebbn.com) or download the App from the Store or Google Play.**

## Dog Owners - Microchipping Compulsory for all Dogs

**From 6th April 2016, microchipping is now compulsory for all dogs in England.**

Getting your dog microchipped will give you the assurance that should they become lost or stolen, they are more likely to be returned safe and sound.

All dogs are still legally obliged to wear a collar and tag with their owner's name, address and



telephone number on it, even after they have been microchipped.

The Council's Neighbourhood Wardens regularly run microchipping sessions and can also visit your home to microchip your dog from just £10.

**For more information contact 0115 917 7777, email [neighbourhoodwardens@broxtowe.gov.uk](mailto:neighbourhoodwardens@broxtowe.gov.uk) or visit [www.broxtowe.gov.uk/microchip](http://www.broxtowe.gov.uk/microchip)**



## OBJECTIVES

Reduce domestic violence in Broxtowe.

## Broxtowe Taxi Drivers Vulnerable Persons Training

Taxi drivers in Broxtowe Borough have been amongst the first to receive the countywide vulnerability training organised by the Nottinghamshire Authorities Licensing Group (NALG).

Over 100 Broxtowe drivers have now received the training, which has been designed in consultation with Nottinghamshire Safeguarding Board, Nottinghamshire Police and Local Authority Licensing Departments to improve awareness on issues including child sexual exploitation and how to report concerns.

By the end of the year, all drivers across Nottinghamshire should have received the training and in Broxtowe it is now a requirement before a taxi driver can be licensed.

**For more information, contact 0115 917 3752 or email [licensing@broxtowe.gov.uk](mailto:licensing@broxtowe.gov.uk)**

**A WORLD-CLASS EDUCATION FOR YOUR CHILD**

Across the globe, the Kumon Maths and English Programmes advance students beyond their school level.

To unlock your child's potential, contact your local Instructor for a free assessment.

**Beeston Study Centre**  
Kailash Dal **0115 9193578**

**KUMON** [kumon.co.uk](http://kumon.co.uk)

Fees vary. Please refer to your local study centre.

# COMMUNITY SAFETY

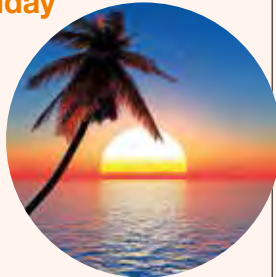
## Stay Safe This Summer

The South Nottinghamshire Community Safety Partnership continues to work hard to reduce crime across South Nottinghamshire.



During the spring and summer months many of us will be enjoying time away from home and spending time in our gardens - here are a few tips to keep you and your property safe:

### Before you go on holiday



- Make your home look lived in - perhaps a trusted person could collect your post, cut your lawn and even park their car on your driveway.
- Avoid discussing forthcoming holiday plans where strangers may hear details of your absence.

- Lock all doors and windows, if you have a burglar alarm set it!

### In your garden



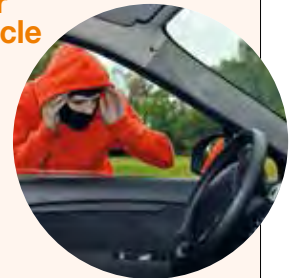
- Keep your shed in good condition, fittings should be bolted through the door and screws concealed, fit a shed alarm.
- Well positioned external lighting is a good way to deter intruders.
- Keep tools secure, they could be used to force entry into your home.
- Chain large items together and consider relocating valuable items to within your home.
- Mark your valuables with your postcode, house name or number.

### At home



- Fit and use good quality locks on doors and windows.
- Keep keys away from windows and doors.
- Remember, if you can get into your home without your keys, so can a burglar.

### Your vehicle



- Never leave your vehicle insecure and remove all valuables.

## IMPORTANT CONTACTS

To find out about crime in Broxtowe check out the Neighbourhood Alert System at [www.nottswatch.co.uk](http://www.nottswatch.co.uk) or visit the Nottinghamshire Police website at [www.nottinghamshire.police.uk](http://www.nottinghamshire.police.uk)

In an emergency or to report a crime in progress contact the police on **999**.

To report information and suspicious activity contact the non-emergency Nottinghamshire Police number **101**.

To report crime anonymously contact Crimestoppers on **0800 555 111**



## Stapleford Week of Action

A week of action helped raise awareness on a range of community safety issues earlier this year, led by Nottinghamshire Police.

The Communities Team held a pop-up information point was on offer at Stapleford Care Centre to give advice on issues including home security, drugs and alcohol and domestic abuse support

and information. Personal safety alarms and purse bells were also given out.

Extra patrols and enforcement also took place during the week and the Council's refuse vehicles advertised domestic abuse awareness messages. A stop smoking pop-up event took place on Braddon Avenue and an information stand managed by the Neighbourhood



Wardens about litter, flytipping, graffiti was also on offer, as well as free microchipping for dogs.

**For more information contact 0115 917 3492 or email [spc@broxtowe.gov.uk](mailto:spc@broxtowe.gov.uk)**



# TRAVEL MADE EASY



PX 125

“Retro Classic”



NEW! Wi-Bikes

“Modern Innovation”

30 Pasture Road, Stapleford, Nottingham, NG9 8GG

Tel: 0115 9392713

[www.scooters.co.uk](http://www.scooters.co.uk) [sales@scooters.co.uk](mailto:sales@scooters.co.uk)



Broxtowe  
Borough  
COUNCIL

Sign up for the latest news, events, updates and more, all direct to your inbox



[www.broxtowe.gov.uk/emailme](http://www.broxtowe.gov.uk/emailme)

# Broxtowe Borough Council

## Useful addresses and telephone numbers

### COUNCIL SERVICES

Council Offices & Town Hall  
Foster Avenue  
Beeston, NG9 1AB

Kimberley Depot  
Eastwood Road, Kimberley, NG16 2HX

**All above offices**  
**Tel: 0115 917 7777**  
**www.broxtowe.gov.uk**

### COUNCIL HOUSING REPAIRS

Daytime and out of hours  
**Tel: 0115 917 7777**

### TOURISM AND LEISURE FACILITIES

D.H. Lawrence Birthplace Museum,  
8a Victoria Street, Eastwood, NG16 3AW

**Tel: 0115 917 3824**  
**www.dhlawrenceheritage.org**

### SPORTS CENTRES

**www.broxtowe.gov.uk/leisure**

Bramcote Leisure Centre  
**Tel: 0115 917 3000**

Chilwell Olympia Sports Centre  
**Tel: 0115 917 3333**

Kimberley Leisure Centre  
**Tel: 0115 917 3366**

### OTHER USEFUL SERVICES, ADDRESSES & TELEPHONE NUMBERS

Citizens Advice Broxtowe  
Council Offices  
Foster Avenue, Beeston NG9 1AB  
**Tel: 0844 499 1193**

**bureau@eastwood.cabnet.org.uk**

Citizens Advice Broxtowe  
Library & Information Centre  
Wellington Place, Eastwood NG16 3BG  
**Tel: 0844 499 4194**

**bureau@eastwood.cabnet.org.uk**  
**www.citizensadvice.org.uk**

Age UK **0800 169 6565**

Consumer Direct **08454 040506**

NHS Advice

24 hour Nurse & Health Advice  
**Tel: 111**

Nottinghamshire County Council  
**Tel: 0300 500 8080**

Voluntary Action Broxtowe  
Oban House  
8 Chilwell Road  
Beeston, Nottingham NG9 1EJ  
**Tel: 0115 917 8080**

Eastwood Volunteer Bureau  
Wellington Place (rear of Library)  
Eastwood, Nottingham NG16 3BG  
**Tel: 01773 535 255**

The Helpful Bureau  
39-41 Church Street  
Stapleford, Nottingham NG9 8DB  
**Tel: 0115 949 1175**

Nottinghamshire Police  
(Non-emergencies)  
**101**

Crime Stoppers  
**0800 555 111**

Sure Start Children's Centre, Eastwood  
**0115 993 9750**

**NET Customer Service**  
**Tel: 0115 942 7777**

### Contact your local councillor

All details available on the website at  
**www.broxtowe.gov.uk/yourcouncillor**

## Follow Broxtowe with social media

Keep up-to-date with the latest Council news, jobs and activities in your area by following Broxtowe Borough Council on your favourite social networking sites or sign up to the email alerts.



**www.broxtowe.gov.uk/socialmedia**

ہمیں آپ کو بروکٹو بورو کونسل کی سب سے تازہ ترین خبریں اور سرگرمیوں کے بارے میں بروکٹو بورو کونسل کے ویب سائٹ پر (0115 917 7777) پر  
سب سے تازہ ترین خبریں

如果你需要此傳單用其他的形式或文字寫成，請撥電話 0115 917 7777 與我們  
聯絡。

اگر آپ چاہتے ہیں کہ یہ لیفٹ آؤٹ کو اردو زبان میں مہیا کیا جائے  
تو براہ مہربانی فون نمبر: 0115 917 7777 پر رابطہ کریں۔

If you need this leaflet in other formats or languages contact us on 0115 917 7777

**This document  
is available in  
large print  
upon request.**

**South Nottinghamshire Community Safety Partnership**  
*Working together to make Broxtowe, Gedling and Rushcliffe safer*

0115 917 3492  
**www.sncsp.org.uk**

Broxtowe Borough Partnership  
Tel: 0115 917 3492  
**www.broxtowepartnership.org.uk**

**www.broxtowe.gov.uk**

Broxtowe Borough Council  
Town Hall, Foster Avenue,  
Beeston, Nottingham, NG9 1AB  
Tel: 0115 917 7777 or  
Fax: 0115 917 3030  
**www.broxtowe.gov.uk**



**Broxtowe  
Borough  
COUNCIL**