



Broxtowe
Borough
COUNCIL

Broxtowe Matters

NEWS & VIEWS - May 2013

The Contents:

Introduction

page 2

Community Safety

pages 3, 4 & 5

Housing

pages 6 & 7

Environment

pages 8, 9, 10 & 11

SUMMER Calendar

What's happening, where and when

pages 12 & 13

Bringing People Together

pages 14, 15, 16, 17, 18, 19 & 20

Jobs & Business Growth

pages 21 & 22

Useful Contacts

page 23



The Hemlock Happening

Hemlock Happening, Community Celebration, bowling, badminton, award winning community groups, cycling events, Dig It community project, business support & training as well as lots of community safety initiatives.

These are just a few of the things you can read about in this newsletter which demonstrates how the Council and its partners are 'bringing people together' in the Broxtowe Borough.

In this edition there is a summer calendar of events on the centre pages and all sorts of other activities, projects and initiatives highlighted throughout providing something for everyone in the Broxtowe community.



The Vision for Broxtowe Borough Council

Listening and responding to ensure the delivery of efficient and effective services

Introduction

Bringing People Together



Ruth Hyde OBE
Chief Executive



Milan Radulovic MBE
Leader of the Council

We've had a long, hard, cold winter. It's not just the weather that has been difficult to cope with though. Like all public services, Broxtowe has had to shoulder its share of the responsibility to cut back on spending. We've tried to do this whilst preserving services, not making employees compulsorily redundant and without increasing the council tax.

A combination of efficient management, working with existing and new partners, using technology, increasing income and continuous improvement has been the key to our approach. Above all we have worked together – politicians of all political parties, and employees, to preserve services and protect the most vulnerable. This is why "Bringing People Together" is one of our most important corporate priorities. There's a lot about this in this edition of the newsletter.

In these times it's important to support our local retailers and businesses. Thanks to our active town centre retailers there's a new town team in Stapleford being ably supported by our New Town Centre Manager. A new town centre initiative is about to start in Eastwood and Kimberley, although in Kimberley there are very few empty shops now. Despite the road work challenges the BID in Beeston is working hard to promote the Beeston and Chilwell High Road areas as good places to shop.

Ten new retailers have been attracted into the Borough, and four new "pop up shops" are planned, supported by our administration of the "Mary Portas" fund, so take advantage of the warmer spring weather (hopefully!) and spend a few hours supporting your local shops and town centre!

Nottinghamshire County Council Elections

Nottinghamshire County Council held its election in May. All 67 of the existing Council seats were up for re-election across Nottinghamshire and in Broxtowe Borough the following 10 candidates were elected to serve Broxtowe residents on the County Council for the next four years.

Area	No of Seats	Elected
Beeston South & Attenborough	1	Kate Foale
Beeston North	1	Steve Carr
Bramcote & Stapleford	2	Stan Heptinstall Jacky Williams
Chilwell and Toton	2	John Anthony Doddy Richard Jackson
Eastwood	1	Keith Longdon
Beauvale	1	John William Handley
Kimberley & Trowell	1	Ken Rigby
Nuthall	1	Philip John Owen

If you want to know the full results of the election or to obtain the contact details of the new councillors visit the website at **www.nottinghamshire.gov.uk/thecouncil/democracy/elections/election2013/** or you can contact Nottinghamshire County Council Customer Services on **0300 500 80 80** or email **enquiries@nottsc.gov.uk**

Broxtowe Matters is published twice a year by Broxtowe Borough Council and the Broxtowe Borough Partnership to keep residents informed about its services and the work it does in the borough.

It costs just 18.5p per copy to print and distribute Broxtowe Matters to more than 50,000 homes and businesses in the borough. It is produced from sustainable resources from managed forests so that new trees grow to replace the wood cut for pulping. If you do not wish to keep this magazine for future reference, please recycle it in your green-lidded recycling bin.

Broxtowe Matters is printed by Plan 4 Print, an independent company, and distributed by the Royal Mail.

We welcome your comments and views so if you would like to make a comment about this newsletter please contact Broxtowe Borough Council's Corporate Communications on **0115 917 3743/3825**.

WHY WASTE TIME



. . . . Do it online - www.broxtowe.gov.uk

Co-Locations

Work with the Police and the County Council to bring the Supporting Families and Beeston Police team into the Council Offices in Beeston during 2013/14, with up to £43,400 of additional annual revenue, more integrated service delivery and better customer service.

**BUDGET
BITES**

Keeping Eastwood Informed

Residents of Eastwood were able to learn more about services in the area and speak face to face with representatives of twenty different organisations including Broxtowe Borough Council, Nottinghamshire Police, the Health Service, the Fire Service and local voluntary organisations in December 2012.

The information day, organised by Broxtowe Borough Council, welcomed local people who picked up advice and

information and freebies, including Smartwater property marking gel, as they browsed the information stands. As the event took place during the festive season free refreshments included a mince pie and the younger visitors were invited to have a go on a free lucky dip.

For further information please contact the Communities team on 0115 917 3744 or 3657 or visit the website at www.broxtowe.gov.uk/safercommunities

Credit Crunch Christmas

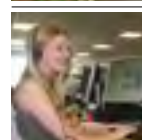
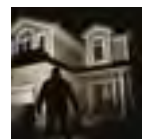
Three workshops took place at various venues in Eastwood during November and December as local people were invited to come along and have a go at making Christmas cards and paper decorations and also jewellery (earrings, necklaces and brooches).

The aim of the event was to bring different age groups and families together to enjoy an activity and break down the barriers between different generations. The project was part of Broxtowe Borough Council's Eastwood Action Plan, which is funded by the South Notts Community Safety Partnership.

Over 30 people attended the intergenerational workshops with ages ranging from six to teenagers, mums, dads and grandparents.

All those who took part said they enjoyed the friendly atmosphere working with all the different age groups and would like to see more of this kind of activity.

For further information please contact the Communities Team on 0115 917 3657



Safe Drinking

A new initiative that provides teachers with safe drinking information is to be offered to all staff of secondary schools in Broxtowe Borough following a successful pilot project in Rushcliffe Borough.

The project aims to assist teachers in educating students by providing them with information about the recommended daily limits of alcohol, 3-4 units for men and 2-3 units for women, and the health risks of exceeding these. Teachers use a unit measurement cup as part of the training, which is a new resource

that allows anyone to see how many units are in the drinks they pour. The cup has been developed by the training team of the Nottinghamshire Recovery Partnership, who also deliver the training in the schools.

Research shows an increasing number of adults in South Nottinghamshire as regularly drinking more than the recommended daily limits. In Broxtowe an estimated 23.3% of all adults regularly drink more than the recommended units, increasing their risk of depression, impotence, relationship problems, injury, high blood pressure,

liver disease and cancer.

The project was set up by the South Nottinghamshire Community Safety Partnership and plans are in hand to visit all the secondary schools in Broxtowe, Gedling and Rushcliffe.

If you are concerned about your own or someone else's drinking, then call the Nottinghamshire Recovery Partnership, a confidential NHS alcohol service on 0800 561 0040.

Further information on safe drinking can be found at www.nhs.uk/livewell/alcohol



COMMUNITY SAFETY

Commissioner's Question Time

Paddy Tipping, Nottinghamshire's Police and Crime Commissioner, has been listening to Broxtowe Borough's young people and was in the hot seat at a special 'Question Time' event held by Broxtowe's Youth Council in March.

The young people had the opportunity to tell the Commissioner how they think the police should spend its money and ask what's being done to tackle crimes affecting young people, including everything from mobile

phone theft and bullying to anti-social behaviour.

Broxtowe Youth Mayor, Adam Stockwell, 16, from Stapleford, said: "This was a great opportunity for the Youth Council members to tell the Police and Crime Commissioner what young people need and what sort of initiatives they would like to see in the future."

Broxtowe Youth Council is made up of pupils from schools across the borough, who meet three times a year to debate the issues affecting them.



Paddy Tipping with Youth Council members Tom Ager, Kirstie Hanratty, Youth Mayor, Adam Stockwell and Madeline Beestin.

The Youth Council has their own Youth Mayor who represents young people at important events throughout the borough, whilst members of the group also work on exciting projects.

The Commissioner is keen to hear your views. He can be contacted on 0115 967 0999 ex 801 2005 or email nopcc@nottinghamshire.pnn.police.uk

Visit www.broxtowe.gov.uk/youthcouncil for more information about the work of the Broxtowe Youth Council.

Broxtowe Women's Project

**Helping women to look forwards to a brighter future free from domestic abuse...
Are you a woman aged 16+**

Does your partner...

- Control all the money?
- Stop you from seeing your friends/family/going to work/college?
- Call you names, shout at you and belittle you?
- Do you feel trapped? Lonely?
- Don't know who to talk to? Fear no one will believe or understand you?
- Do you blame yourself?
- Are you scared or worried about you and or your children's safety?

...Then you may be (are) experiencing domestic abuse?

Visit our weekly drop in at Stapleford (Weds: 10am-1pm) or Eastwood (Mon: 10am-1pm) - We can help . . . We will listen and won't judge you.

- We can also offer an outreach service (face to face support).
- Phone support
- Freedom from the inside out — Six Week Programmes for Women to raise awareness about domestic violence and build up on confidence.
- Interested in volunteering — help give back to the community/supporting women/help with fundraising for our work

Call: 01773 719 111 (both lines between 10am - 1pm: Mon - Fri,
Text (only): 07914634190 confidential answerphone available)
Agencies: 01773 718 555



Less crime in the Borough

Recorded Crime in Broxtowe April 2012 - February 2013

All Recorded Crime	Reduced by 13.5%
House Burglary	Reduced by 8.8%
Car Crime	Reduced by 10.5%
Robbery	Reduced by 23.7%
Violent Crime	Reduced by 7.7%
Criminal damage	Reduced by 21.9%

Over the past year the Broxtowe Community Safety Partnership has carried out a number of initiatives to tackle crime including high-visibility policing, CCTV surveillance and project work within the community.

This and the support of the public has helped see a continued trend towards a reduction in crime when compared to the same period for 2011 – 2012.

To find out about crime in Broxtowe check out the Neighbourhood Alert System at www.broxtowecommunity.co.uk or visit the Nottinghamshire Police website at www.nottinghamshire.police.uk

To protect your property

and belongings, including mobile phones, laptops and ipods/MP3 players, you may want to consider registering them with the UK's National Property Register, IMMOBILISE, by registering online for free at www.immobilise.com

- In an emergency or to report a crime in progress contact the police on 999.
- To report information and suspicious activity contact the non-emergency Nottinghamshire Police number 101.
- To report crime anonymously contact Crimestoppers on **0800 555 111**.

South Nottinghamshire Community Safety Partnership
Working together to make Broxtowe, Gedling and Rushcliffe safer

Prison Me – No Way

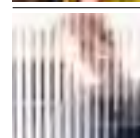
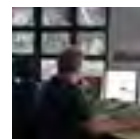
Year eight pupils at Chilwell Comprehensive School attended a 'Prison Me – No Way' session in May 2013 to help raise awareness amongst young people about the causes, consequences and penalties of crime and the effects of anti-social behaviour. The sessions, run by prison officers, are just one of a number of initiatives taking place in the borough to advise and educate the community in order to reduce crime.

Children attending previous sessions, during which they met serving prisoners, soon became engaged with the process which proved to have a real impact on them.

"I really enjoyed the crime day. The crime van really opened my eyes and made me not want to go in prison and I found it amazing when we found out about those 3 ladies that are in prison. Thank you for an amazing day, I will remember it for many, many years".

It is planned to deliver an additional Prison Me - No Way session at Eastwood Comprehensive School during the coming year.

The project is funded by the South Nottinghamshire Community Safety Partnership. For more information visit the website at www.sncsp.gov.uk



Beeston Police Station Relocation

In May, Beeston Police Station in Chilwell Road, Beeston will close and police services will be relocated to Broxtowe Borough Council's offices, in Foster Avenue, Beeston together with the Council's Communities Team.

The move will promote closer working relationships between the Council and the police

and generate significant savings, helping to protect front line services and jobs.

The building also hosts the Citizens Advice Bureau.

A police front counter service will be available there. It will be open from Monday to Thursday, 8.30am until 5pm, and Fridays 8.30am until 4.30pm.

If you need to contact the

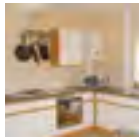


**NOTTINGHAMSHIRE
POLICE**
PROUD TO SERVE

police outside of these hours, a yellow telephone will be located outside the main entrance of the council offices which will give you direct out of hours contact to the police.

If you have any information about crime in the area, or you want to speak to a local officer, call 101 or Crimestoppers anonymously on 0800 555 111.

HOUSING



**Mick Adcock, one of the
Council's new Caretakers**

Caretaker Review

The Caretaking team across the Council's housing areas, estates and sheltered housing schemes is being reviewed to find new ways to improve the delivery of the service.

Broxtowe Borough Council employs a team of Area

Caretakers and a cleaning team to ensure that areas are kept clean and free of rubbish.

Tenants and residents will be invited to a series of events and meetings throughout the summer to help shape the service

and a draft service review report will be available for comment in the autumn.

For further information, contact Broxtowe Borough Council on 0115 917 7777 or visit www.broxtowe.gov.uk/housing

Retirement Living Redevelopment

At the beginning of the year, residents of Peatfield Court, Stapleford and Wyndham Court, Chilwell were advised to move out of their properties to allow for new sites to be redeveloped.

As soon as the news was announced, each resident was allocated a key worker

to assess their individual requirements and ensure that family and friends were kept fully informed.

Within four weeks an agreement of new accommodation with 36 out of 37 affected residents was made, 16 of which signed new tenancies in Retirement Living Schemes elsewhere in the Borough. The remaining residents are in the process of being re-housed.

Residents at both schemes said the support and assistance they received from the Council exceeded their expectations.

The development of both sites will provide residential homes that will be

managed by Nottingham Community Housing Association. Those eligible to be offered the new developments will be selected from Broxtowe Borough Council's housing register.

Broxtowe Borough Council will also commission four bungalows to be built on the garage site at Peatfield Court, which they will own and manage.

If you require any further information about the redevelopment of Peatfield Court and Wyndham Court, please contact the Housing Options and Allocations Manager on 0115 917 3443 or email hlc@broxtowe.gov.uk

Your right to buy

If you are a council tenant, or were living in your council home when it was sold to another landlord, now is the perfect time to think about whether buying your home is right for you.

The top discount has just been increased to £75,000 and the extra money raised through the scheme is now going straight towards building new affordable homes.

For example, if the market value of your home is £140,000 and you qualify for the maximum discount, you could buy your home for just £65,000, less than half the price it would normally cost. For a typical mortgage, this is around £100 a week (plus any service charges that apply).

Buying your home is an important decision for you and your family but home ownership gives you more freedom to make the changes you want to your home and means that you can move when and where you choose. For some people, the best thing is knowing that you have a proper stake in your home, because it's your name on the deeds.

If you are interested in finding out more information or whether you are eligible, visit www.broxtowe.gov.uk/housing or call on 0115 917 7777.

Reductions to Charges

The Council decided to delete the charge for elderly and disabled Council tenants for garden maintenance (which had been £2 a week). The costs of this move are contained in the housing revenue account.

**BUDGET
BITES**

Edith gets keys to her new home

An elderly Beeston resident who escaped an explosion that seriously damaged her home has been given the keys to her new home in Harry Peel Court, one of Broxtowe Borough Council's Retirement Living Schemes.

Edith Dodson, 82, survived the gas blast in Salisbury Street over Christmas and suffered only minor burns to her face and slight cuts and bruises after firefighters led her to safety.

Following the incident, Edith stayed as a guest at Yew Tree Court, one of the Council's other retirement living schemes, where she praised employees and residents for their kindness and welcoming her during this stressful and difficult time.

For more information about the Council's Retirement Living Schemes, please contact 0115 917 7777.



Edith with Mel Bastock, Retirement Living Officer

Find a new home with HomeSwapper

Social housing tenants in Broxtowe Borough are now able to join HomeSwapper for free after the Council subscribed to the service last year.

The online service at www.homeswapper.co.uk allows tenants to advertise and search for property exchanges and is the UK's largest mutual exchange site.

Since the Council joined in August 2012, over 200 social housing tenants

in the borough have subscribed to the service and ten swaps have been recorded on the site.

For more information please visit www.homeswapper.co.uk



HOUSING

Makeover for homeless accommodation



Broxtowe Borough Council's temporary accommodation has undergone a major revamp to help make the experience of finding themselves homeless less stressful for families and individuals.

As part of the revamp, kitchens and bathrooms were upgraded and décor was given a makeover including new soft furnishings and fittings, carpets and blinds.

A young family, who

were forced to leave their previous home after their private landlord would not renew their tenancy, were the first to receive the keys at Plowman Court in Stapleford and were overwhelmed at the standard of accommodation.

For more information or if you would like to discuss your housing options, please contact Broxtowe Borough Council on 0115 917 7777 or visit the Council Offices.

Broxtowe Council Tenant's Contents Insurance

What would you do if you lost everything in your home due to an unexpected event? Would you be able to replace all these items without an insurance pay out?

Contents insurance may not be the first thing on your financial plan with so many other outgoings, but could you afford to replace your belongings? A contents insurance policy could help you out financially if you had to replace or repair an item if it was damaged or stolen.

Broxtowe tenant's contents insurance scheme can protect your belongings in the event of a fire, flood or burglary and payments start at as little as 67p per week for £6,000 sum insured.

For further information about council tenants contents insurance, or to request an application pack, please contact Broxtowe Borough Council 0115 917 7777 or visit www.broxtowe.gov.uk/tenants



ENVIRONMENT

White is right for recycling

Do you know what you can recycle? Last year we asked residents what items could be recycled in their green-lidded bin and only 20% got it right.

Please help by only recycling the 'white' items in the table and following our recycling tips:

- Glass and Garden waste should not be put into the black bin.
- All glass goes in the glass bag.
- Garden waste should be recycled as part of the scheduled garden waste collection service only.
- Food waste should be wrapped and placed in the black bin.

- Items such as plastic food trays, batteries, foil, foil trays, tetra/milk/fruit juice cartons and old clothes/shoes can be recycled at recycling bank sites across the borough.

For more information or to check when your next collection is, please visit www.broxtowe.gov.uk/recycling

WHITE IS RIGHT ✓	✗
Newspapers, magazines and junk mail	Glass bottles/jars
Cardboard boxes	Foil and foil trays
Cardboard packaging	Tetrapak/Milk/Fruit juice cartons
Food cans	Plastic bags/Carrier bags
Drink cans	Old clothes/shoes
Plastic bottles	Plastic food trays
Yoghurt pots/margarine tubs	Batteries
Aerosols	Garden Waste (e.g. grass cuttings) and Kitchen organic rubbish (e.g. food waste)

Equipment Rationalisation

By reducing the number of multi functional devices (printers) used corporately in 2012/13 from over 70 to 24, we are saving £7,200 annually from 2013/4 in equipment costs.

**BUDGET
BITES**

Get cycling and go greener

Free cycle training, led rides and cycle maintenance classes are on offer to Broxtowe residents to keep fit, have fun and go greener thanks to Broxtowe Borough Council's RideWise project.

Nationally accredited cycling instructors will help newcomers who want to learn how to cycle, as well as helping existing cyclists become more confident.

Bike maintenance training will also be on offer, teaching cyclists how to fix common problems like punctures and sticky brakes, so they can be better prepared when out and about on their bikes.

For more information, contact RideWise on 0115 955 2288, email customerservices@ridewise.org.uk or visit www.ridewise.org.uk

Andy Pooley & Sarah Jones



Bank holiday bin collections

Please remember that on our refuse collection calendars, we have wrongly marked the week commencing 19th August 2013 as a bank holiday week when in fact it's the week after (commencing 26th August). We apologise for any confusion this may cause.

Residents with a 'South A' or 'South B' calendar whose collections take place on a Friday should also note the following information for their garden collections:

- Garden collections usually picked up on a Saturday will be collected as follows: Saturday 31st August on Mon 2nd September.

Great news for gardeners:

We have listened and will be extending the garden waste collections to include week commencing the 2nd December. Collections will continue fortnightly up to the above date.

For more information or to download an amended version of the calendar, please visit www.broxtowe.gov.uk/locateit

Alternatively, residents can request details of their next collection by sending a text message to 60075, starting the message with 'BROX NEXT' and including their postcode and house number (i.e. 'BROX NEXT NG9 1AB 32').



£30,000 improvements to Chilwell play area

Chilwell's Chetwynd Road Recreation Ground has undergone a £30,000 transformation with new play equipment to make it more accessible for children of all levels of ability.

The Council made the improvements to install equipment with more gentle slopes together with other equipment with special adaptations, such as double-width slides to allow children to use the equipment with their parent or carer.

Existing fencing has also been replaced with a new, dog-proof fence complete with self closing gates and the park's impact absorbing surface has been improved with the introduction of new rubber areas.

Oak trees have also been planted at the site to provide shade and new benches have been installed.

Funding for these improvements was secured by the Council from section 106 payments made by Barratt Homes, the developers of the former Long Eaton Lace and Textiles site near to Chetwynd Road Recreation Ground.

For more information about parks and open spaces in the borough, please contact Broxtowe Borough Council on 0115 917 7777, email env@broxtowe.gov.uk or visit www.broxtowe.gov.uk/leisure

Blue Plaques Unveiled

A new blue plaque has been unveiled in Beeston to commemorate Sir Louis Frederick Pearson CBE, co founder of Beeston Foundry Company.

The plaque, at Broadgate Park, has been installed by the Southern Broxtowe Blue Plaques Group to commemorate Sir Louis, who gave the park to the people of Beeston in 1923 as a recreation ground.

The Southern Broxtowe Blue Plaques Group works to celebrate the people and places of South Broxtowe and consists of a small group of volunteers including Beeston and District Civic Society, Beeston and District Local History Society, the Stapleford and District

Local History Society and the Bramcote Conservation Society.

Blue Plaque's are installed across the country to commemorate local notable figures and the buildings in which they lived and worked. There are currently over 20 plaques throughout Attenborough, Beeston, Bramcote, Chilwell, Stapleford and Toton.

For more information contact Southern Broxtowe Blue Plaques Group on 0115 925 5219.

Beeston Riverside Path Project

Works on nearly 4km of path improvements around Attenborough Nature Reserve have now been completed.

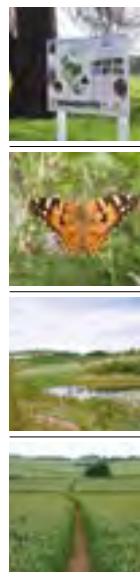
The improvements included resurfacing to provide a good quality route throughout the year and a hard wearing surface to reduce the need for continual maintenance, as well as widening sections of path and introducing chicanes to control cycle speeds on the pathway between Beeston Marina and Barton Lane.

New viewing areas to allow better views of the

reserve and its wildlife have also been introduced and Barton Lane car park has been refurbished.

The project was completed thanks to a large partnership led by the Borough Council, with support and funding from Nottinghamshire Wildlife Trust, Greater Nottingham Growth Point, Nottinghamshire County Council, CEMEX and the Environment Agency.

For more information, please contact Broxtowe Borough Council on 0115 917 3634, email env@broxtowe.gov.uk



ENVIRONMENT

Are energy bills becoming a strain on your organisation?



The Social Enterprise Energy (SEE) initiative helps social enterprises, charities and voluntary and community groups to ensure that every penny is kept where it is most needed.

For organisations based in Nottinghamshire, Derbyshire or Leicestershire, independent expert support will help to:

- make instant savings on utility bills by switching to a cheaper energy tariff.
- identify opportunities

for cost and carbon savings and for energy generation technologies; including the provision of support with funding, procurement and implementation.

- support staff, service users and local communities to save money and energy.

This initiative is delivered by NEP Energy Services (NEPs) who have extensive experience in supporting organisations to find quick cost and carbon savings, then communicating the benefits and knowledge to staff, service users and the local community.

As a charity, NEPs recycle 100% of profits back into



local community carbon and fuel poverty projects.

In addition, for every four days consultancy purchased by a private sector or large organisation, they gift one day of free support to a local community.

Visit the website at
www.nottenergy.com/consultancy/SMEs_and_Voluntary_Sector
Telephone
0115 985 3005 or email
gemma.c@nottenergy.com



the big wheel
turning transport around
www.thebigwheel.org.uk

Cycle goody bags with The Big Wheel

There's never been a better time to think about making your travel greener as the Big Wheel are offering a cycling goody bag, including a t-shirt, a Bike Shepherd Security System and a cycle map pack to 20 lucky winners who enter their free prize draw.

The Big Wheel are working with the Broxtowe Borough Partnership to promote greener, more sustainable and healthy ways to travel by encouraging local people to use other forms of transport and not just their cars.

Their website is packed with helpful tools including a personal journey planner and information on cycle lanes and public transport throughout Nottinghamshire.

To enter, email admin@thebigwheel.org.uk with 'Broxtowe Bike' as the email subject. Winners will be selected on Friday 7th June.

For more information and advice about cycling lessons, public transport and details of Big Wheel events, please visit www.thebigwheel.org.uk/broxtowe

The Grow & Grow Project – helping veg growing happen!

The Big Lottery funded Grow & Grow Healthy Veg Growing Project has been working across Broxtowe Borough, helping local projects by providing planters and building raised bed gardens in community allotments and school growing areas.

Now in its third year, the community based project also provides training and support so that local people can make their food growing projects a success.

If you have a food project and would like practical support, advice or training, please contact Rural Community Action Nottinghamshire on 01623 727 600 or email awithington@rcan.org.uk



Broxtowe parks 'a cut above'

The Council has received a national award for the quality of its parks and open spaces after picking up the Most Improved Performer Award for Parks, Open Space and Horticultural Services at the Association of Public Services Excellence (APSE) Performance Network Awards.



New tree leaves lasting legacy for fallen beech

Local schoolchildren planted bulbs, wild flowers and plugs at Bramcote Hills Park last year, in the area surrounding a 200 year old beech tree that had collapsed.

The children joined the Mayor of the Borough of Broxtowe 2012/13, Councillor Margaret Handley, along with the Greenwood Community Forest Team and TCV (Trust for Conservation Volunteers) to plant a new European Nettle Tree, as well as bulbs including snowdrops, bluebells, primula and foxgloves.

The project was developed in partnership between the Borough Council and Greenwood, with help and financial support from volunteers, Councillor Stan Heptinstall's County Council Divisional Funds and Bullock Construction, the Council's housing modernisations partner.

For more information about parks and open spaces in the borough, please contact Broxtowe Borough Council on 0115 917 7777, email env@broxtowe.gov.uk or visit www.broxtowe.gov.uk/leisure



ENVIRONMENT

Wildlife in Partnership



Last year, Broxtowe Borough Council became the first local authority in Nottinghamshire to pledge its support to protect local wildlife, after being recognised as a Wildlife Guardian by Nottinghamshire Wildlife Trust.

This year marks the 50th anniversary of Nottinghamshire Wildlife Trust and the Council is looking forward to

developing the partnership to enhance wildlife in Broxtowe, particularly in areas such as the Erewash Valley.

For more information about the work of Nottinghamshire Wildlife Trust, visit www.nottinghamshirewildlife.org



Dig in at community allotment

Stapleford's community led Dig In Allotment has been given a new lease of life with new growing beds installed and new composting areas developed, including a compost toilet.

The improvements were made at the site, on Albany Allotment, Pasture Road thanks to support from Rural Community Action Nottinghamshire.

Local groups and school children are invited to visit the allotment to explore the large poly tunnel, outdoor beds, wildlife garden, orchard, beehives, ponds and more, all whilst learning about organising growing and sustainable healthy living.

New volunteers are welcome, with drop in sessions run twice a week on Wednesday and Saturday between 10.00am and 12.00pm, as well as free events including:

- Fruity Saturday - Saturday 22nd June (11.00am - 3.00pm)
- Beekeeping workshop - Saturday 20th July (10.00am- 12.30pm)
- Pond dipping workshop - Monday 5th August (10.00am-12.00pm)
- Cook and taste - Tuesday 20th August (10.00am-12.30am)
- Harvest celebration - Saturday 12th October (11.00am -3.00pm)

Booking for workshops is essential. For more information or to find out how to get involved, visit www.digincommunityallotment.blogspot.co.uk



JUNE

BRAMCOTE

SAT 8 HEMLOCK HAPPENING

A fun packed day out for all the family from 1.00pm at Bramcote Hills Park in full view of the Hemlock Stone. This will include community and professional stage shows, make and take activities, sports, dance and a spectacular fireworks finale at 10.30pm.

0115 917 3695

REDUCE, REUSE, RECYCLE

Come and join Broxtowe Borough Council's recycling team at the Hemlock Happening at Bramcote Hills Park on Saturday 8th June, where they will be getting creative and re-using waste to make an anti-litter bug from egg cartons and other recycled materials.



EASTWOOD

SAT 15 D.H LAWRENCE HERITAGE'S SUMMER SAUNTER

Come along to the D.H Lawrence Heritage Centre for our 'Summer Saunter' at 11.00am, a gentle walk exploring the early life of D.H. Lawrence including the Headstocks on the site of the former Brinsley colliery.

01773 717 353



CHILWELL

Sat 15 & SUN 16 BROXTOWE RACKETLONS

Spin, Slice, Serve and Smash your way to victory at these exciting sports events at Chilwell Olympia Sports Centre, Bye Pass Road, Chilwell. Each event is a singles competition including table tennis, badminton, squash and tennis. Deadline for entry is WEDNESDAY 12TH JUNE.

- Broxtowe Junior Racketlon – Saturday 15th June (9.00am), £12.00 per person
- Broxtowe Racketlon – Sunday 16th June (9.00am), £20.00 per person

0115 917 3572
or visit www.broxtowe.gov.uk/sportsevents for online discounts on entry



SUN 16 VINTAGE MOTORBIKE RALLY

Classic motor heads are in for a treat as Nottinghamshire and Derbyshire Vintage Motorcycle Club descend upon the D. H. Lawrence Heritage Centre. The motorcycle convoy sets off on its 100 mile run to find answers to a selection of local knowledge questions and observations. Bikes can be viewed between 9.30am-10.00am, before they depart on the rally, and again between 3.30pm-4.30pm.

01773 717 353



JULY

EASTWOOD

THROUGHOUT JULY EASTWOOD ARTS FESTIVAL

Now in its 13th year, the festival offers a wide variety of exciting events, performances and workshops. Old or young, there is something for everyone so come along and get involved!

0115 917 3695



BEESTON

SAT 6 BROXTOWE COMMUNITY CELEBRATION

Celebrate the many differing cultures in Broxtowe through music, dance, sport, arts and crafts and food from around the world. Everyone is welcome at this free event at Round Hill Primary School, Foster Avenue (11.00am – 4.00pm).

0115 917 3712



EASTWOOD

SAT 13 FAMILY FUN DAY

A free, creative and sporting event for the whole family at Coronation Park (12.00pm – 4.00pm), as part of the Eastwood Arts Festival. There will be plenty of activities to get involved in including theatre, dance, music and visual arts.

0115 917 3695

Sat 13 THE VIBE

An exciting event at Coronation Park (6:00pm – 9:00pm), especially for young people and organised by the Eastwood Young People's Partnership to showcase talented young people as well as providing opportunities to develop skills, try new things and have a great time.

0115 917 3695



MOORGREEN

THURS 18 OUTDOOR THEATRE - THE COMEDY OF ERRORS

Shakespeare's classic play, performed at Colliers Wood (7:30pm). Tickets cost £12.00 or £9.00 for concessions. Hot food and drink available to buy on site or bring your own picnic. Seating is provided. To book, call 0115 917 3695 or buy over the counter at Broxtowe Customer Services shop, Eastwood.



EASTWOOD

THROUGHOUT JULY DREADFUL DAYS OF OLD REVOLTING VICTORIAN TOURS

Discover the darker side to Victorian life with these Revolting Victorian themed tours at the D.H Lawrence Birthplace Museum and see how vile Victorian life was from ash pit toilets to arsenic poisoning! Admission charges apply.

01773 717 353



Looking for ideas to keep the whole family entertained?

Here are a few of the exciting events and activities happening in your area this summer...

AUGUST

BEESTON

SAT 3, 10, 17, 24
MUSIC IN THE SQUARE

Enjoy a summer of music with free performances in Beeston Square every Saturday in August between 10.30am and 12.30pm. Catch some of Broxtowe's young musical talent in the afternoons.

0115 917 3695



VARIOUS LOCATIONS

THURS 8, TUES 13,
FRI 16, WED 21
PLAY DAYS

Back for another year of fun packed adventure, arts, sports and surprises, come and enjoy one of our four free Play Day events! All 12.00pm – 4.00pm.

- Thurs 8 - Broadgate Park, Beeston. No Public Parking on site.
- Tues 13 - Eastwood Comprehensive School field. Vehicle access via Hall Park, Mansfield Road.
- Fri 16 - Ilkeston Road Recreation Ground, Stapleford.
- Wed 21 - Kimberley School Playing Field. Access from Chestnut Drive, Nuthall.

0115 917 3695

TOTON & BRAMCOTE

THUR 8 – SUN 11, THUR 22 – MON 26
FUNFAIRS

Funfairs return in Toton at Manor Farm Recreation Ground between 8th & 11th August and Bramcote Hills Park, Bramcote between 22nd & 26th August. Visit www.broxtowe.gov.uk/funfairs for opening times.

0115 917 7777

BEESTON

SAT 24
PROMS IN THE PARK

Join us for an evening of relaxing live music at Dovecote Lane Recreation Ground. Bring chairs/blankets to sit on and an umbrella if wet. Free parking on Foster Avenue Car Park if wet, limited parking on site if ground is dry.

0115 917 3695



BRAMCOTE

FRI 30
AQUATHLON

Swim it and run it! A new event for 2013, Broxtowe Aquathlon starts with a swim at Bramcote Leisure Centre, followed by a run around Bramcote Hills Park. Deadline for entry is TUESDAY 20TH AUGUST.

- Broxtowe Junior Taster Aquathlon (4.00pm), £7.00 per person
- Broxtowe Beginners Aquathlon (6.00pm), £11.50 per person
- Broxtowe Challenge Aquathlon (6.00pm), £13.50 per person

0115 917 3572
or visit www.broxtowe.gov.uk/sportsevents for online discounts on entry



SEPTEMBER

EASTWOOD

THUR 5
BLUE LINE TRAIL WALK & TALK

Explore Lawrence Country with Broxtowe's Walk and Talk programme during a guided walk along Eastwood's Blue Line Trail, which links the D.H. Lawrence Heritage Centre with the four Lawrence family homes, as well as six other related sites.

01773 917 3711
or visit www.broxtowe.gov.uk/walking



THUR 5 – SAT 21
D.H LAWRENCE FESTIVAL

The ever popular D.H. Lawrence Festival returns for the centenary of the publication of Sons and Lovers, with a host of events themed on the novel including exhibitions, a guided walk and a writing competition, as well as an exciting Blue Line Trail street theatre event acting scenes from the novel.

01773 717 353
Find us on Twitter by following @dhlheritage and using #dhlawrencefestival



KIMBERLEY

OPEN SEPTEMBER
FA STANDARD FIVE-A-SIDE FACILITIES

- New pitch at Kimberley Leisure Centre for the new season
- FA specification pitch markings and goals, as well as 3G turf
- New FA format for under 7's and 8's football

0115 917 3366



EASTWOOD

THUR 5 – SUN 8
FUNFAIRS

A fun packed day out at the funfair at Jubilee Park, Eastwood between 5th & 8th September. Visit www.broxtowe.gov.uk/funfairs for opening times.

0115 917 7777

Get online for events with added 'WOW' factor

Check out the What's On Where (WOW) online directory at www.broxtowe.gov.uk/wow to find hundreds more events taking place in your area throughout the year. If you're a local community or voluntary group, you can publicise your own events for free to thousands of visitors to the website using the easy-to-use online form.



BRINGING PEOPLE TOGETHER



Leisure Centre Income

In 2013/4 we are projecting to increase leisure centre income by £103,000 above originally budgeted income for the previous year. Attendances continue to grow due to continued investment in new facilities and the success of new marketing strategies. We are also planning to receive an additional £8,000 of income during 2013/14 from a capital investment to create a new five a side floodlit area at Chilwell Olympia.

**BUDGET
BITES**

Local Group Wins Two Awards in One Month

The Pulp Friction Travelling Kitchen is a new social enterprise which has been set up to run alongside Pulp Friction Smoothie Bar. Both businesses work with young adults who have learning difficulties or learning disabilities to develop their social independence and work-readiness skills.

A grant from the Broxtowe Choosing Health Fund enabled Pulp Friction to pilot a series of cookery demonstrations and cookery classes using the Children's Food Trust's Let's Get Cooking programme. The project has proved successful and in February won two awards - a

Golden Spoon Award from the Children's Food Trust and Britain's Top Real Role Model sponsored by Amway International.

Pulp Friction Co-ordinator, Jill Carter, said "without the initial support of Broxtowe Choosing Health we wouldn't have got this far as quickly - this is an excellent example of how a small grant can help to achieve big things."

For more information contact Jill Carter on 07794 676 398 or visit the website at www.pulpfrictionsmoothies.org.uk

BOWLING in Broxtowe

- Enjoy spending time outdoors, keeping fit and meeting new people
- Why not try outdoor bowling?
- It's fun and enjoyable, suitable for all ages and abilities
- No previous experience or equipment is necessary
- Potential to join a bowls club and enjoy playing matches.

A game can cost as little as £2.15 per person per hour.

Season tickets for unlimited play are just £25.00 (full price) or £30.00 (concessions) from Broxtowe Borough Council Beeston, Stapleford & Eastwood cash offices.

Broxtowe Borough Council offers four greens with permanent attendants that are open Monday to Friday 12noon until 8pm, and weekends 10.30am until 8pm, from May until September at:

- Coronation Park, Eastwood
- Manor Farm Recreation Ground, Toton
- Queen Elizabeth Park, Stapleford
- Hickings Lane Recreation Ground, Stapleford

There are also greens without attendants at:

- Broadgate Park, Beeston
- Beeston Fields Recreation Ground, Beeston
- Inham Nook Recreation Ground, Chilwell

For further details and information, please contact the Directorate of Environment

Tel: 0115 9173625

**Web: www.broxtowe.gov.uk
E-mail: env@broxtowe.gov.uk**

**Why not
join a bowls club?**

At all sites there are enthusiastic clubs registered with Broxtowe Borough Council who are keen to attract new members



Are you up for a Challenge?

Make 2013 your sporting year by taking part in one of Broxtowe Sports 2013 Sports Events! Challenge yourself, family and friends to a series of events that test fitness, skill and inner strength! There are lots of challenges to take part in throughout the year and they are all suitable for beginners.

Events take place at sites across the Borough for both children and adults and all competitors will receive a free goodie bag at each event on behalf of international sports retailer and event partner Decathlon.

We all love a freebie

For the third year in a row Broxtowe Sport, with support from Attenborough Nature Reserve and Friends of Colliers Wood, are providing free buggy walks this summer around the beautiful nature reserves.

Over 80 women enrolled to take part in the walks last summer and they provide a great way to keep fit and make friends at the same time, with many mums stopping for a coffee and a chat afterwards.

This is the first year that the Colliers Wood walks are being trialled, taking place on Mondays at 10.30am and meeting at the Horse and Groom car park. The Attenborough walks will take place every Tuesday at 10.00am, meeting at the picnic area by the reserve



building. All walks are led by a qualified walk leader and take around an hour.

If you are looking for something more challenging, try the Buggy Babes group outdoor exercise class, every Wednesday at 11.30am at Stapleford Sure Start Centre, £4.50 per class or £20 for 5 weeks.

Bootcamp your body to fitness in the great outdoors

Rural vs City gym returns to Broxtowe this summer to challenge you to get into shape for summer at one of the classes held in Beeston Fields Recreation Ground or Bramcote Hills Park.

Classes will utilise the local environment with games and challenges, working in pairs and teams to get in shape whilst having fun. Space hopper races, parachute runs and tug of war are just some of the challenges you can take up.

Classes at Bramcote Hills

Park are on Tuesdays, 6.00-7.00pm until 2nd July and classes in Beeston Fields Recreation Ground are on Wednesdays, 6.00-7.00pm until 3rd July.

The first session is free, with a £2.00 charge for each additional session. If you are aged between 18-25 years and bring a friend you will get your session for free.

Everyone needs a bit of Stress Relief

Pilates and yoga have been proved to help reduce stress, anxiety and depression whilst also keeping your body fit and supple. Broxtowe Borough Council is running lunch time yoga and pilates for 12 weeks



each at the Middle Street Resource Centre, Beeston for only £1.50 per session. The sessions are a chance to relax and unwind, to support a healthy body and mind.

The first sessions start on Monday 3rd June 1.15pm to 2.15pm every Monday for 12 weeks.

To find out more or book your place contact Broxtowe Borough Council on 0115 917 3572, email sport@broxtowe.gov.uk or visit:

www.broxtowe.gov.uk/sport
www.broxtowe.gov.uk/sportsevents
www.broxtowe.gov.uk/sport4me
www.broxtowe.gov.uk/newmums
www.broxtowe.gov.uk/facebook/sport

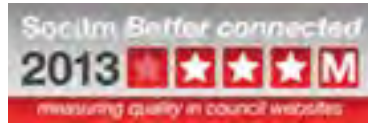


BRINGING PEOPLE TOGETHER

We're Mobile

Visitors to Broxtowe Borough Council's website can now access the latest Council news, current vacancies, events and other essential services on the go, thanks to the launch of the Council's new mobile website.

The new mobile site offers an improved layout and navigation structure which have been specially designed for anyone visiting the Council's website from a mobile or tablet device.



The service makes it even easier to access the most popular Council services online, making it simpler than ever to find details of your next bin collections, search for local events to keep the whole family entertained and find information on leisure and Heritage Centre opening times.

Anyone accessing the Council's website –

www.broxtowe.gov.uk – from a mobile or tablet device will automatically be redirected to the mobile version of the website.

For more information and to begin exploring Broxtowe Borough Council's new mobile website, please visit www.broxtowe.gov.uk from a mobile, smart phone or tablet device.

Partnership Development

Decathlon has entered a two year partnership with the Council to support local sports events. They have pledged to share their resources, equipment and skills and provide goodie bags, prizes and equipment for participants to try from their store in Eastwood. This is worth around £5,000 a year.

BUDGET BITES



New Look Bistro for Lawrence Centre

A not-for-profit catering venture offering employment and training to adults with learning difficulties has opened its doors to hungry visitors to

Eastwood's D.H. Lawrence Heritage Centre, after moving into the award-winning visitor attraction.

Kimberley Paralympian, Simon Wilson and the Deputy Mayor of the Borough of Broxtowe, Councillor Iris White, officially opened the new-look D.H. Lawrence Bistro.

Lawrence Bistro to enjoy its first year at the Heritage Centre rent free, as well as offering a start-up grant to help ensure the long-term success of this exciting and innovative venture.



The Bistro will provide supported employment and training to adults with learning difficulties from across Nottinghamshire who are aged 25 or over. The trainees will be involved in all aspects of the business, from hospitality and food preparation to cooking.

Broxtowe Borough Council will allow the D.H.

The Bistro is open to visitors to the attraction every week, Tuesday to Sunday, from 10.00am daily.

For more information about the D.H. Lawrence Bistro and to discuss catering for weddings, birthdays and other functions, please contact Patricia Ironside on 01773 717 353 or email pironside@hotmail.co.uk

Heritage Centre Hosts Exciting Children's School Holiday Programme

Join the D.H. Lawrence Heritage Centre on Mansfield Road, Eastwood during the summer holidays for a host of special themed events and have-a-go workshops, where children can make something to take home with them.

Themes will range from a Fantasy Fun Day, Knights and Damsels and Under the Sea to the return of the popular Wildlife Workshop. There will also be bouncy castles and fancy dress competitions to take part in and children can follow themed trails

around the exhibition area with a chance to win a small prize! All children

must be accompanied by a responsible adult. Admission charges apply.

For more information please contact D.H. Lawrence Heritage on 01773 717 353, email culture@broxtowe.gov.uk or visit www.dhlawrenceheritage.org You can also find D.H. Lawrence Heritage on Facebook, as well as on Twitter by following @dhlheritage and using the #dhlawrenceheritage hash tags.

Armed Forces pledge receives £240,000 support

Four projects have benefitted from over £240,000 to promote greater integration of the local armed forces in Broxtowe Borough

Broxtowe Borough Council, Broxtowe Borough Partnership, Beeston BID and Voluntary Action Broxtowe signed the Community Covenant pledge with the armed forces locally and armed forces charities in January 2012, enabling each organisation to apply for Ministry of Defence funding.

Four of the five applications put forward were successful, including:

- The Life Beyond The Wire project, which received £97,830 to improve access to Chetwynd Barracks for families and personnel.
- £53,081 to set up a 'Forces in the Community', a central hub to provide support, training and sign-posting to veterans and their families.
- £41,800 towards a new play area at Manor Farm Recreation Ground, Toton.

- £48,703 to Nottinghamshire YMCA to help engage and train one hundred 11-18 year olds from both the barracks and the surrounding areas of Chilwell and Toton in outdoor adventure, digital, media and film projects.

Other projects undertaken as part of the Covenant have also helped improve communication within Chetwynd Barracks, enabling service families to engage with the Royal British Legion and receive training and English language lessons provided

by Voluntary Action Broxtowe.

If you are a member of the local armed forces help us to support forces personnel and veterans by telling us where in the borough you live. Simply complete the form at www.broxtowe.gov.uk/armedforces

For more information about the Community Covenant contact Broxtowe Borough Council on 0115 917 3492 or email spc@broxtowe.gov.uk



Support Centre for Veterans and Their Families



Founder of Forces in the Community, Rick Harrington with The Mayor of the Borough of Broxtowe 2012/13, Councillor Margaret Handley & Brigadier Harry Nickerson, Commander 49 (East) Brigade.

A Nottinghamshire based registered Charity has opened a 'Forces in the Community' centre in Beeston for veterans, serving personnel, wives, partners, parents and their families. The centre, open five days a week, offers veteran's advice and guidance with qualified careers advice and training, as well as links to mentors who are veterans that have successful civilian careers. It also offers signposting to housing support, help with addiction, community legal services and other service charities.

The launch of the Beeston centre was made possible through the Armed Forces Community Covenant Grant Scheme.

The scheme aims to help all ex-forces personnel and their families if they find they need information and support on housing, health, finding a job and more.

For more information contact Rick Harrington, Forces in the Community, 2 Cross Street, Beeston on 0115 922 0320 or visit www.forces.org.uk

Good Neighbours

The University of Nottingham has over 34,000 students living in Nottingham and employs over 7,000 staff.

The University is an important part of the city, contributing to its reputation and success, recognising the responsibility it has to its surrounding areas and wanting to be a good neighbour.

Working in partnership with local councils, the police, landlords, community groups and other partners, the University aims to promote key messages around being a good neighbour, crime prevention, waste management and recycling.

Rachel Patti (right) has recently joined as Off Campus Affairs Assistant,



working with Melanie Futer, Manager Off Campus Student Affairs. One of Rachel's main responsibilities will be working in Broxtowe – particularly Beeston – on University and student-related matters.

Rachel is a Broxtowe resident herself and a former student of the University of Nottingham.

You can contact Rachel at Rachel.Patti@Nottingham.ac.uk or 0115 748 4517.



BRINGING PEOPLE TOGETHER

Walking Football

Broxtowe Sport has Walking Football sessions for you so you're never too old for a game of football!

The sessions are for older adults and the rules are the same as a normal game of football, with one exception; no running, no jogging, no sprinting, just walking.

Whether you used to play football and now find the pace a little bit too much, or never had the chance to get involved before, Walking Football could be the perfect opportunity for you to play. Each session costs £2.00 and booking is recommended.

The following sessions are available:

- Wednesdays, 2.00-3.00pm at Bramcote Leisure Centre with tea and coffee afterwards
- Tuesdays, 2.00-3.00pm at Kimberley Leisure Centre
- Saturdays, 10.00-11.00am at Chilwell Olympia Sports Centre

To find out more contact 0115 917 3572, email sport@broxtowe.gov.uk or visit the website www.broxtowe.gov.uk/olderadults



Children's Centre Training Opportunities

Broxtowe Children's Centres, an organisation for young families, has a thriving volunteer programme with a wide range of volunteering placements from play supporters to administration supporters. A growing number of volunteers are even accessing funding to gain a qualification (QCF Level 2 or 3) in either childcare or administration whilst volunteering for the centre.

The centre also offers an exciting Adult Education and Family Learning Timetable with free Family Cooking Sessions, Build your Self Confidence Workshops, Initial Volunteer Training, ESOL Course, First Aid Courses plus much, much more.

JobCentre Plus also drop-in to offer advice and support at Chilwell Children's Centre every Thursday and alternate Wednesdays at Beeston North with Lenton Abbey.

If you are interested in finding out more about the volunteer programme, courses or the many other services offered (including Family Support in the Home, Breastfeeding Support, Toy Library, Sensory Room, Parenting Courses and Behavioural Support!) please get in touch by calling 0115 993 5780.

New Car Scheme Plus for wheelchair users

New Car Scheme Plus, which provides transport to essential services for wheelchair users who have difficulty using public transport, has been launched in the borough.

The "plus" comes in the form of two new, specially-adapted vehicles to meet the needs of disabled people who need to remain in their wheelchair – a group of passengers who currently can't travel with existing schemes.

Funded by Broxtowe Borough Council and supported by Nottinghamshire County Council and Rural Community Action Nottinghamshire, the new service is a fully accessible car service for residents in the borough.

It is run in partnership with the Eastwood Volunteer Bureau and The Helpful Bureau in Stapleford. The cars are driven by volunteers from the two bureau who have undergone specialised training to a nationally accredited standard.

Anyone wanting to make use of the scheme must first register with either Eastwood Volunteer Bureau or The Helpful Bureau. An affordable fare is charged for each journey.

More information on Car Scheme Plus is available from The Helpful Bureau on 0115 949 1175

or email transport@thehelpfulbureau.org.uk and Eastwood Volunteer Bureau on 01773 535 255 or transport@evbvols.org.uk

The Mayor of the Borough of Broxtowe 2012/13, Councillor Margaret Handley with Katrina Blaney from Helpful Bureau, Stapleford.



BRINGING PEOPLE TOGETHER



Find the Markers

Xplorer is a fun family challenge aimed at primary and pre-school children and their parents, grandparents and guardians. Using a simple map of the park, the aim is to find the points marked on the map and

write down the answers on the markers.

Run it, Find it, Answer it!

RunChallenge is a running activity combined with a fun question and answer element. Aimed at individuals or groups

of friends who are active and love getting outdoors, Broxtowe Sport will provide a fun running challenge that trains your brain and body whilst exploring your local area.

Once a month until September, there will

be an Xplorer event at Bramcote Hills Park and a RunChallenge in both Beeston and Eastwood.

To find out more information and to book your place please visit www.broxtowe.gov.uk/sportsevents, email sport@broxtowe.gov.uk or call 0115 917 3572.



Eastwood Sports Centre - Badminton

New badminton sessions have started at Eastwood Community Sports Centre on Mansfield Road as part of Badminton England's 'No Strings' initiative to encourage people to play badminton. Whether you're new to the game,

looking to improve or you just need someone to play with, Tuesday nights, 5.00-7.00pm at Eastwood Community Sports Centre is the place to be.

Help and support are available from our

badminton co-ordinator and there are prizes to be won. At a cost of just £1.00 per person, each session is a must for badminton enthusiasts. Participants must be 14 years and over and it's a drop in session so no booking is required.

For more information please contact Eastwood Sports Centre on 0115 917 3573 or visit www.broxtowe.gov.uk/ecsc4adults



Avoid the Cowboys

It's costly to extend or improve your home, so don't cut corners by paying cash to some fly-by-night cowboy builder. It could cost you more in the long term.

If you sell your home, you'll need a Completion Certificate for building work. Without one, the sale will be delayed and could fall through. Broxtowe's Building Control issues these certificates for building work completed. Use a reputable builder or it could cost thousands if things go wrong.

Broxtowe's Building Control will ensure the work meets building regulations. The team have good local knowledge, is efficient and cost effective, checking building plans and visiting regularly throughout the work to ensure it is carried out correctly.

The team provides

independent, professional advice.

Top tips to avoid the Cowboys:

- Make sure you have full contact details for your builder and ask for the details of satisfied customers so you can check them out.
- Avoid those who deal only in cash or don't have business paperwork.
- Make sure the Building Control Officer inspects the site regularly.
- Don't make the final payment to your builder until you're fully satisfied with the work and you've got your Completion Certificate.

For more information contact building control 0115 917 3466 or email pabc@broxtowe.gov.uk

Broxtowe Borough Council

D.H. Lawrence Festival 2013

Friday 6th - Saturday 21st September

Celebrating the writer D.H. Lawrence's life and work and the Centenary of his classic, semi-autobiographical novel *Sons and Lovers*

The Festival programme will include:

- Book Festival
- Creative Workshops
- Drama
- Exhibitions
- Film Screenings
- Guided Tours
- Guided Walks
- Lectures
- Music
- National Heritage Open Days
- Reading Groups
- Special Events
- Vintage Arts and Craft Fair

Please pick up a copy of dedicated D.H. Lawrence Festival Brochure. Call (01773) 717353 or visit www.dhlawrenceheritage.org for more information.

Join us on Facebook www.facebook.com/dhlawrenceheritage and Twitter [@dhlawrenceheritage](https://twitter.com/dhlawrenceheritage) to get the latest festival news!

D.H. Lawrence Heritage (D.H. Lawrence Heritage Centre, Wollaton Park, Eastwood, Notts, NG7 5EJ) 01773 717353 www.dhlawrenceheritage.org © Culture Nottingham Ltd 2013 www.facebook.com/dhlawrenceheritage

BRINGING PEOPLE TOGETHER

10th Anniversary Walk and Talk

Broxtowe Walk and Talk celebrated its 10th anniversary in April with a walk from Durban House in Eastwood. Mayor of the Borough of Broxtowe 2012/13, Councillor Margaret Handley, gave the walkers a rousing send off and met the many walkers and walk leaders who have contributed to the success of the group.

Walking is a great way to maintain a healthy lifestyle and has been proven to improve muscular strength, improve fitness, help maintain a healthy body weight and to prevent against cardiovascular disease.

It is also a great way to get out and meet new people, boosting mental well-being, lifting moods and helping to reduce tension and

stress whilst giving you more energy.

All the walks are free, there is no need to book, and everyone is welcome. Best of all you don't need any specialist equipment to take part.

You can find out more about the Walk and Talk programme on the website at www.broxtowe.gov.uk/walking partnership or telephone 0115 917 3711 or 0115 917 3508



Chairman of Greasley Parish Council 2012/13, Councillor June Layton, Mayor of the Borough of Broxtowe 2012/13, Councillor Margaret Handley, and the Council's Exercise Referrals Officer, Julie Bonser, celebrate with Walk Leaders from Broxtowe Walk and Talk

Broxtowe's 10,000 'hidden carers' urged to get support



NHS Nottingham West Clinical Commissioning Group has launched a campaign to encourage Broxtowe Borough residents who provide unpaid care to loved ones to get the help and support they deserve.

The 'Who Cares, We Care' campaign encourages unknown or 'hidden' carers to tell their GP Practice that they are

caring for someone. In March 2013, a double-decker bus visited town centres and supermarkets in Broxtowe which was manned by health and social care staff who offered advice and signposting.

According to the latest Census figures, more than 12,000 Broxtowe residents are providing unpaid care to family and friends each week. However, only around 1,500 carers are known to their GP, who can offer valuable support and advice as well as the

Access Improvements planned for Kimberley Leisure Centre

A successful bid for £79,000 of funding to improve disabled access has recently been approved. The grant has been gained from the Short Breaks Fund via Nottinghamshire County Council, which aims to improve access to facilities for people with disabilities.

The proposed scheme at Kimberley will see the existing lift being replaced with a larger and more user friendly design. Work will be scheduled to start in the summer and is hoped to be completed in time for the new school term.

For more information and bookings please contact Kimberley Leisure Centre on 0115 917 3366.

possibility of free flu jabs and health checks.

There are a number of ways patients can let their GP Practice know they are a carer. Text the word Care and your name to 66777 (standard network charge) and a member of the CCG team will call you back, or email carers.team@nottspct.nhs.uk or your own GP Practice.

For more information about the campaign visit www.nottinghamwestccg.nhs.uk/care

What's Happening to our Town Centres

Following the appointment of a new Town Centre Manager last year, as well as winning a £100,000 bid for funding from the Mary Portas project, Broxtowe's four town centres are starting to feel the benefit.

Stapleford businesses have already formed a Board following well attended meetings in December and January. The Town Centre Management Board will collect the views of the local businesses and make decisions on future projects and activities aimed at improving the town.

Broxtowe Borough Council's Town Centre Management team and the new Board will meet regularly to agree future activity and continue to work with the local

community and businesses to find out what else they would like to see in Stapleford.

In **Eastwood & Kimberley** the Council's Town Centre Management team are busy working with local businesses to create a Management Board in each town that will work in the same way as Stapleford.

In **Beeston** the Council is continuing to support local businesses in conjunction with the Beeston BID, particularly whilst the tram works continue to disrupt Beeston town centre.

For more information, please contact Broxtowe Borough Council on 0115 917 3043, email towncentres@broxtowe.gov.uk or visit www.broxtowe.gov.uk/business

JOBS AND BUSINESS

Unemployed? Want to keep active?

Life's pressures can sometimes leave you feeling low or stressed but exercise can help to boost your mood. In Broxtowe, men aged 18 and over can help beat the blues by getting involved in weekly football sessions

in Bramcote. The football sessions, run by Broxtowe Borough Council, are a great opportunity to meet other people, have some fun and get support.

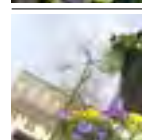
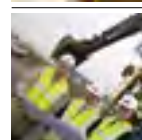
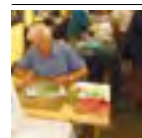
The hour long, small sided football sessions take place every Monday from 11.00am until 12.00pm at Bramcote Leisure Centre, Derby Road, Bramcote, Nottingham. Each session costs £1.00. Booking is recommended.

To find out more, please contact Broxtowe Borough Council on 0115 917 3572, email sport@broxtowe.gov.uk www.broxtowe.gov.uk/mentalhealth

Government Grant for House Building

The Council will receive a New Homes Bonus of £611,100 to reward house building in our area (especially building of affordable homes and bringing empty homes back into use). This money is kept in a separate reserve.

BUDGET BITES



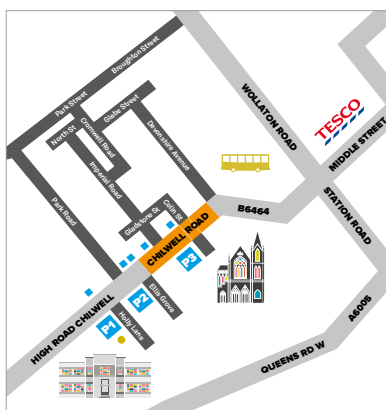
Up to 3 hours
FREE PARKING

+  Free SHUTTLE BUS!

Every 30mins from Beeston bus station to Holly Lane

High Rd Chilwell
Live, shop & eat well

Over 60 car parking spaces & free shuttle bus service



Map and key

- **Parking**
P1 – Holly Lane 35 spaces.
P2 – Central 10 spaces, plus 2 disabled. P3 – Chilwell Road 20 spaces, plus 2 disabled (access via Colin Street).
Limited road parking along High Road Chilwell, Imperial Road and Colin Street off Gladstone Street.
- **Shuttle bus service**
Free shuttle bus service every 30mins from Beeston bus station to Holly Lane.
- **Main roads**
Access to Chilwell Road and High Road Chilwell.
- **Chilwell Road**
Closed during the tram works.

We're staying
OPEN!
DURING THE TRAM WORKS

HIGH ROAD CHILWELL, CHILWELL ROAD, BEESTON NG9

JOBS AND BUSINESS

Mary Portas Money Helps local business thrive

Broxtowe Borough Council's Business Start Up Grant has proved a great success and already 10 businesses have been able to set up and take on empty units in the borough's town centres or enhance their business.

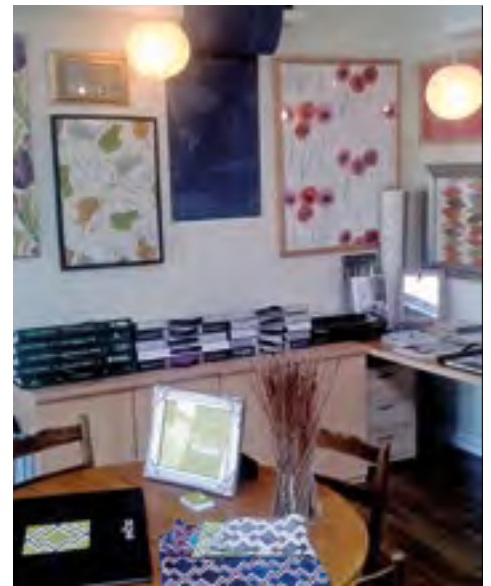
Broxtowe Borough Council set up the Start Up Grant following a successful bid to the High Street Innovation Fund (Mary Portas Initiative) in March 2012. The grant was offered to businesses taking on empty properties

in Broxtowe's town centres and has proved so popular that it only took six months to allocate all the money to successful applicants.

Each business receives two separate payments of £2500 following meetings with retail consultant, Kerching Retail Ltd, who are also funded from the grant. They help each applicant set up a business plan, which is then reviewed before the next payment. The retail consultant is then available to the business for a period

of 12 months.

In addition, to the 1-2-1 support Kerching Retail Ltd also provide an advice pack to highlight all aspects of running a business.



For more information about business support in the Borough, visit the website at www.broxtowe.gov.uk/business, contact the Town Centre Manager on 0115 917 3043 or email towncentres@broxtowe.gov.uk

Widening the NET

The NET tram service, which already serves the Nuthall area of our borough on the existing tram line, is being extended from the city centre to Beeston and Chilwell.

The extension is now in its second year of construction and works

are well underway. New bridges are being built at Nottingham Station, Lenton and at the QMC. The Toll Bridge in Wilford is being widened and, on the roads, utility services are being moved away from the tram route so that tram tracks and tram stops can be installed.

If you haven't visited Beeston recently some of the routes into and out of the town centre have changed temporarily so that tram works can take place, but all your favourite shops, including those in Beeston's very own independent shopping quarter along Chilwell Road, remain open for business as usual.

NET has recently revealed artist's impressions

showing what a new bus/tram interchange will look like once it is built in Styring Street in Beeston and how Chilwell Road will look when tram services open to the public from late 2014.

To view the artist's impressions and to keep up to date about the tram extension visit: www.thetram.net/phasetwo or call: (0115) 924 24 54.



Broxtowe Borough Council

Useful addresses and telephone numbers

COUNCIL SERVICES

Council Offices & Town Hall
Foster Avenue
Beeston, NG9 1AB

Stapleford Office
Carnegie Civic & Community Centre
Warren Avenue, Stapleford, NG9 8EY

Eastwood Customer Services Shop
15 Nottingham Road, Eastwood, NG16 3AP

Kimberley Depot
Eastwood Road, Kimberley, NG16 2HX

All above offices
Tel: 0115 917 7777
www.broxtowe.gov.uk

HANDITILL FACILITIES

Kimberley Post Office
28 Main Street, Kimberley

COUNCIL HOUSING REPAIRS

Daytime and out of hours
Tel: 0115 917 7777

TOURISM AND LEISURE FACILITIES

D.H. Lawrence Heritage Centre,
Mansfield Road, Eastwood, NG16 3DZ

D.H. Lawrence Birthplace Museum,
8a Victoria Street, Eastwood, NG16 3AW

Tel: 01773 717 353
www.dhlawrenceheritage.org

SPORTS CENTRES

www.broxtowe.gov.uk/leisure

Bramcote Leisure Centre
Tel: 0115 917 3000

Chilwell Olympia Sports Centre
Tel: 0115 917 3333

Eastwood Community Sports Centre
Tel: 0115 917 3573

Kimberley Leisure Centre
Tel: 0115 917 3366

OTHER USEFUL SERVICES, ADDRESSES & TELEPHONE NUMBERS

Citizens Advice Broxtowe
Council Offices
Foster Avenue, Beeston NG9 1AB
Tel: 0844 499 1193
bureau@eastwood.cabnet.org.uk

Citizens Advice Broxtowe
Library & Information Centre
Wellington Place, Eastwood NG16 3BG
Tel: 0844 499 4194
bureau@eastwood.cabnet.org.uk
www.citizensadvice.org.uk

Broxtowe Help Directory –
Tel: 01773 535 255
admin@evbvols.org.uk
www.broxtowehelpdirectory.org.uk

Age UK **0800 169 6565**

Consumer Direct **08454 040506**

NHS Direct
24 hour Nurse & Health Advice
Tel: 0845 4647

NHS Nottinghamshire County – PCT
Tel: 0300 300 1234

Voluntary Action Broxtowe
Oban House
8 Chilwell Road
Beeston, Nottingham NG9 1EJ
Tel: 0115 917 8080

Eastwood Volunteer Bureau
Wellington Place (rear of Library)
Eastwood, Nottingham NG16 3BG
Tel: 01773 535 255

The Helpful Bureau
Stapleford Care Centre, Church Street
Stapleford, Nottingham NG9 8DB
Tel: 0115 949 1175

Nottinghamshire Police
(Non-emergencies)
101

Crime Stoppers
0800 555 111

Contact your local councillor

All details available on the website at
www.broxtowe.gov.uk/yourcouncillor

Follow Broxtowe with social media

Keep up-to-date with the latest Council news, jobs and activities in your area by following Broxtowe Borough Council on your favourite social networking sites.



www.broxtowe.gov.uk/socialmedia

ہمیں اپنے تمام سروسز کے لیے 0115 917 7777 پر
فون کرنے کی درخواست ہے۔

如果你需要此傳單用其他的形式或文字寫成，請撥電話 0115 917 7777 與我們
聯絡。

اگر آپ چاہتے ہیں کہ یہ لیفٹ آؤٹ آپ کو اردو زبان میں بھیجا گیا ہے
تو براہ کرم فون نمبر: 0115 917 7777 پر رابطہ کریں۔

If you need this leaflet in other formats or
languages contact us on 0115 917 7777

TYPETALK - TEXT DIRECT

Typetalk's purpose is to bring the benefits of the telephone network to deaf, deafblind, deafened, hard of hearing and speech-impaired people.

Managed from a state-of-the-art centre, Typetalk's highly trained operators understand the special requirements of its customers and provide a warm, friendly service in complete confidentiality.

For Broxtowe Borough Council telephone **18001 0115 917 7777**.

Broxtowe Borough Council
Town Hall, Foster Avenue,
Beeston, Nottingham, NG9 1AB
Tel: 0115 917 7777 or
Fax: 0115 917 3030
www.broxtowe.gov.uk

South Nottinghamshire Community Safety Partnership
Working together to make Broxtowe, Gedling and Rushcliffe safer

0115 917 3492
www.sncsp.org.uk

Broxtowe Borough Partnership
Tel: 0115 917 3492
www.broxtowepartnership.org.uk



**Broxtowe
Borough
COUNCIL**

**This document
is available in
large print
upon request.**

www.broxtowe.gov.uk

FREE



**Broxtowe
Borough
COUNCIL**

The Hemlock Happening

Saturday 8th June 2013

1.00pm – 10.40pm on

Bramcote Hills Park

A fun packed day filled with music, dance, sports and arts!

And a field full of fun, free family activities!

**Grand Finale Spectacular
Firework Display
at 10.30pm**



**Final programme information and
times can be viewed at www.hemlockhappening.org**



NB: This programme could be subject to change. All performances and activities are outdoors. Bring something to sit on and an umbrella if wet!

There is very limited parking on site with priority for Disabled Badge Holders. Please park on Ilkeston Road Recreation Ground which will have a security presence from 10.00am until 11.30pm on the day.

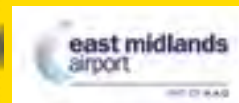
The Hemlock Happening is sponsored by the following organisations:



**Nottinghamshire
County Council**



Stapleford
Town Council



Arts & Events
Broxtowe Borough Council

