



## The Contents:

### Introduction

Page 2

### Environment

Pages 3, 4, 5 & 6

### Housing

Pages 7 and 8

### Community Safety

Pages 9 and 10

### Waste & Recycling

#### 2015 CALENDAR

Pages A, B, C & D

### Jobs & Business Growth

Pages 15 & 16

### Bringing People Together

Pages 17, 18, 19, 20 and 21

### Money Matters

Pages 22 & 23

# Be part of the Recycling Generation



General Waste 

Garden Waste 

Recycling 

Glass 

## WHY WASTE TIME . . .



Do it online . . . [www.broxtowe.gov.uk](http://www.broxtowe.gov.uk)

INCORPORATING



Broxtowe Borough  
Partnership

The Vision for Broxtowe Borough Council

Listening and responding to ensure the  
delivery of efficient and effective services

**> PULLOUT >**  
NEW Textile Kerbside  
Collection and  
2015 CALENDAR  
See Centre Pages

## Introduction

### Protecting and Enhancing the Environment

Broxtowe Council is committed to taking responsibility to protect and enhance the environment for its future generations and in our Corporate Plan we have pledged that recycling and composting levels in the borough will rise to 50% by 2016 and residual waste levels will fall to 455kgs per household by 2016.

Recycling levels as of the end of June 2014 were 42.9%. A number of exciting new projects are helping to slowly push this figure upwards including red lidded bins for glass recycling and a new textile recycling scheme about to be introduced.

We know that we can't achieve this target without your help and over the years residents have demonstrated their backing for this challenge by supporting our waste and recycling initiatives.

The introduction of a payment for garden waste was widely supported by residents and it's now very easy to pay for your garden waste bin online at [www.broxtowe.gov.uk/gardenwasteform](http://www.broxtowe.gov.uk/gardenwasteform). We have been delighted with the take-up of the scheme so far.

Broxtowe Matters is published twice a year by Broxtowe Borough Council and the Broxtowe Borough Partnership to keep residents informed about its services and the work it does in the borough.

It costs just 18.5p per copy to print and distribute Broxtowe Matters to more than 50,000 homes and businesses in the borough. It is produced from sustainable resources from managed forests so that new trees grow to replace the wood cut for pulping. If you do not wish to keep this magazine for future reference, please recycle it in your green-lidded recycling bin.

Broxtowe Matters is printed by Mercia Image, an independent company, and distributed by the Royal Mail.

We welcome your comments and views so if you would like to make a comment about this newsletter please contact Broxtowe Borough Council's Corporate Communications on **0115 917 3743/3825**.



Ruth Hyde OBE  
Chief Executive



Milan Radulovic MBE  
Leader of the Council

Last year a number of residents said they liked to receive a refuse collection calendar each year. We listened to what you said and have decided that the most cost effective way to do this is to include the calendar as part of Broxtowe Matters. You will find your new 2015 calendar on the centre pages of this newsletter together with other exciting news about kerbside textile recycling, free glass bins and how to pay for your garden waste bin.

We will keep you up to date with any changes to our waste collection service – a good way of getting up to the minute information is by following us on twitter @broxtowebc. If you forget what day your bin will be collected it's easy to find out online by clicking on "when's my collection" on the front page of our website and typing in your postcode. Finally, if you need to report a missed bin, you can send a text message to 60075. Start the message with 'BROX MISSED' and include your postcode and house number - i.e. 'BROX MISSED NG9 1AB 32'.

**So thank you for your enthusiastic participation in our recycling initiatives.**

**With your help we will keep moving forward.**

### How Is Your Town Centre Performing?

How is your nearest town centre performing? Broxtowe residents, shoppers and business owners are being encouraged to get online and have their say to help inform new initiatives to regenerate Broxtowe town centres.

The questionnaire is available online on the Council's website at [www.broxtowe.gov.uk/towncentresurvey](http://www.broxtowe.gov.uk/towncentresurvey) and is quick and easy to fill in, using a series of drop down boxes and point and click answers.

The Town Centre Management team are keen to hear from as many residents, tradesmen, retailers, business owners and shoppers from each of Beeston, Eastwood, Kimberley and Stapleford and will be promoting the questionnaires across the borough.

**The questionnaire will run until Friday 5th December.**

**For more information, contact Broxtowe Borough Council on 0115 917 3446 or email [towncentres@broxtowe.gov.uk](mailto:towncentres@broxtowe.gov.uk)**

### WHY WASTE TIME . . . .



**Do it online . . . [www.broxtowe.gov.uk](http://www.broxtowe.gov.uk)**



### Environment



**Mayor of the Borough of Broxtowe, Councillor Stan Heptinstall MBE is joined by Broxtowe Borough Council's Grounds Maintenance Team.**

### Mown Over By The Success

Celebrations were in full swing at Bramcote Hills Park in July as Mayor of the Borough of Broxtowe, Councillor Stan Heptinstall MBE joined members of the Council's Grounds Maintenance Team and Friends of the park to mark the 9th consecutive year it has been awarded the prestigious Green Flag.

Colliers Wood, Moorgreen also retained its Green Flag for the 7th year running and the borough's two Community Green Flag sites at Alexandrina Plantation / Sandy Lane Open Space,

Bramcote and Bramcote Old Church Tower also retained their awards.

The Green Flag award demonstrates a high standard of maintenance and cleanliness together with a commitment to sustainable environmental management.

**For more information visit [www.broxtowe.gov.uk/parks](http://www.broxtowe.gov.uk/parks) or [www.youtube.com/broxtowebc](http://www.youtube.com/broxtowebc) to see a video of some of Broxtowe's parks and open spaces.**

### Swap-a-Lock

TravelRight and Nottinghamshire Police recently teamed up to help reduce bike theft by holding swap-a-lock sessions across Nottinghamshire, including in Broxtowe.

During the events, a total of 575 people traded in their old bike locks for a free "Sold Secure Silver approved" lock.

Each session also had a free Dr Bike mechanic on hand who serviced 46 bikes and TravelRight advisors who gave advice

on travel and transport, including free timetables, guides and maps.

TravelRight provides free family and adult cycle training, cycle maintenance classes, bespoke travel planning advice and travel support for residents who gain new employment, covering Broxtowe, Gedling and North Nottingham.

**Visit [www.travelright.org.uk](http://www.travelright.org.uk), email [travelright.broxtowe@ridewise.org.uk](mailto:travelright.broxtowe@ridewise.org.uk) or tweet @TravelRightBrox**

## Starting a new position?

### You may be eligible for free transport!

### Those starting a new job, training or an apprenticeship could receive up to one month's free public transport or a free bike.

### Contact us for details.



**TravelRight**  
Broxtowe borough



[www.travelright.org.uk/broxtowe](http://www.travelright.org.uk/broxtowe)

0115 917 3423

[travelright.broxtowe@ridewise.org.uk](mailto:travelright.broxtowe@ridewise.org.uk)



TravelRight is a not-for-profit organisation with the Sustainable Travel Collective. Generated as part of Nottinghamshire's Local Sustainable Transport Fund.

Environment

# Win Vouchers with TravelRight

TravelRight is part of the Sustainable Travel Collective Ltd, a charity promoting and encouraging the development and use of sustainable forms of travel.

TravelRight Broxtowe are giving local people who live and work in the borough a chance to win a 1st prize £25 Decathlon voucher or 2nd prize £10 Mango travel card, simply by answering questions correctly. Five runners up will also receive a £5 Mango card.

To be in with a chance to win simply read the information below, answer the following questions and send your answers to [travelright.broxtowe@ridewise.org.uk](mailto:travelright.broxtowe@ridewise.org.uk) by 10th December 2014.

ANSWER THESE QUESTIONS

- 1 Out of residents surveyed, which mode of transport resulted in the most common method of travel overall?
- 2 What website provides an opportunity to register for car sharing?
- 3 What percentage of residents surveyed said they had no access to a car at all?

At the end of last year, TravelRight Broxtowe conducted their first community survey online and out on the street, asking people around the Broxtowe Borough how they get about. Over 200 local people completed the survey and here are some of the results.

Interestingly, when asked what mode of travel people took for various journeys, walking presented as the most common method of travel overall. Buses came out as particularly well used for shopping and education trips and many residents said they travel alone by car for less than 5 miles per week.

Although at times car journeys can appear the most convenient mode, short trips are ideal for nipping around by bike, especially when you'd like to avoid the traffic.

Generally, once people start cycling, they are surprised by the short amount of time it takes to get around and pleased they can predict their journey time. For example, at 12mph, a cycle ride from Beeston to Stapleford town centres would take around 18 minutes by bike, with a scenic route along most of the way. The same journey by car would take 14 minutes.

TravelRight  
[www.travelright.org.uk](http://www.travelright.org.uk)



Work more than 5 miles away? Car sharing is widely used for different kinds of trips throughout the borough, but not a popular method when it comes to travelling to work. To find out if a car-share could work for you, join [www.nottinghamshare.com](http://www.nottinghamshare.com). You never know, there may be someone else who does the same journey and you could share petrol costs!

Only 19% of local residents surveyed said they have no access to a car at all. Eastwood, Beeston and the Rylands in particular, show clusters of people without access to a car.

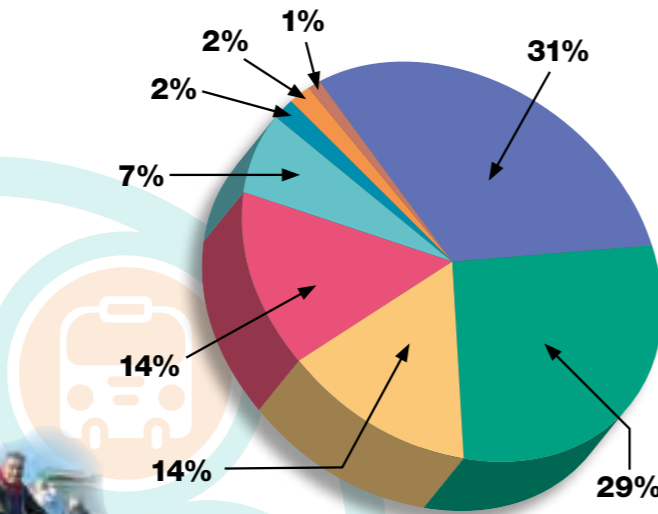
TravelRight now run weekly cycle training and leisure rides in these two areas, as well as in Stapleford, with free cycle hire, maps and instructors who can give cycle route advice.

TravelRight can also give journey planning advice covering different modes of travel including the best public transport ticketing options. They offer volunteer opportunities and may be able to offer support with transport costs if you are in new employment or training.

For more information, contact 0115 917 3423, email [travelright.broxtowe@ridewise.org.uk](mailto:travelright.broxtowe@ridewise.org.uk) or find them on Twitter @travelrightbrox and Facebook at [www.facebook.com/TravelRightBroxtowe](http://www.facebook.com/TravelRightBroxtowe)

## Overall Trip Modes

Walking	31%	Cycling	7%
Car	29%	Tram	2%
Bus	14%	Train	2%
Car Share	14%	Motorcycle	1%



This project/activity is being delivered as part of the Nottingham Urban Area's successful Local Sustainable Transport Fund programme helping to establish Nottingham as an exemplar for integrated sustainable transport. For further details visit [www.nottinghamcity.gov.uk/1stfprojects](http://www.nottinghamcity.gov.uk/1stfprojects)

## Memorial Unveiled To Commemorate WW1

The Memorial Gardens at Mansfield Road Recreation Ground, Eastwood were unveiled as the first Fields In Trust Centenary Field in the East Midlands in August at a commemoration service to mark the centenary of the start of the First World War.

A memorial stone was also unveiled to mark the event and in remembrance.

Centenary Fields is open to all local authorities to protect war memorial fields, parks and green spaces created in memory

of those who lost their lives during World War 1.

Led by the UK charity Fields In Trust in partnership with The Royal British Legion, the programme ensures that there will be a space to remember those who gave their lives during the conflict and protect valuable green space.

For more information, contact 0115 917 3743, email [env@broxtowe.gov.uk](mailto:env@broxtowe.gov.uk) or visit [www.youtube.com/broxtowebc](http://www.youtube.com/broxtowebc) to see a video slideshow of the event.



The new memorial

## £118,000 Park Improvements

Over £118,000 has been allocated to improving Parks and Open Spaces in Broxtowe thanks to funding from the Council's capital programme, as well as funding from Section 106 developer contributions.

**Basil Russell Playing Fields, Nuthall: Autumn 2014** - work to install a protective fence around the cricket outfield, together with pavilion improvements

and new junior football goals.

**Flixton Road Open Space, Kimberley: Autumn 2014** - work is underway to upgrade the children's play area.

**Coronation Park, Eastwood: Autumn 2014** - replacement of the bowling green edging.

**Watnall Green, Watnall: Early 2015** - a bid has been submitted for Landfill

Tax Funding to improve the paths and access points to the site.

**Hall Park, Eastwood** - The roadway has been fully resurfaced and the car park improved.

**Ilkeston Road and Pasture Road Recreation Grounds, Stapleford** - working with Groundwork Greater Nottingham, has been awarded Landfill Tax Funding to install paths

around the perimeter of these two popular parks.

For more information, please contact 0115 917 3643, email [env@broxtowe.gov.uk](mailto:env@broxtowe.gov.uk) or visit [www.broxtowe.gov.uk/parks](http://www.broxtowe.gov.uk/parks)

## Kimberley Guides Design Sculpture

Guides in Kimberley visited Watnall Spinney earlier this year as part of a special project to help design a new sculpture for the local nature reserve.

The visit was organised by Greenwood Community Forest Team to encourage local people to use the woodland, now that major work has taken place on the local nature reserve.

Professional sculptor, Peter Leadbeater led a workshop to inspire the Guides to get creative and provide him with ideas for a tree sculpture that he carved

into a tree stump on the edge of woodland.

The guides also got stuck in and helped with some light woodland management, following similar visits by Kimberley Scouts and Nuthall Senior Guides.

Watnall Spinney, off Trough Lane, Watnall was designated as a Local Nature Reserve by Broxtowe Borough Council in 2012 and is a haven for wildlife.

For more information contact 0115 969 6518, [greenwood@nottscc.gov.uk](mailto:greenwood@nottscc.gov.uk) or visit [www.greenwoodforest.org.uk](http://www.greenwoodforest.org.uk)



1st Kimberley Guides

## Environment

### Toton Unearthed



An exciting new partnership project took place at Manor Farm Recreation Ground during the summer to unearth the history of Toton.

Broxtowe Borough Council worked with Friends of Toton Fields to locate The Mills and Manor House by digging exploratory trenches and test pits. The project was funded by Heritage Lottery Fund.

The archaeological works were undertaken by locally based company Trent and Peak Archaeology. The project was a huge success bringing together lots of people from the local community to assist with the works and some very exciting 'finds'.

For more information visit [www.totonunearthed.org.uk](http://www.totonunearthed.org.uk)

### Download the FREE app now!



Download from Windows Phone Store | Available on the App Store

### The 3 Rs

Greening Beeston is encouraging people to remember the 3 Rs – Reduce, Reuse, Recycle - with a focus on using and buying less, as well as reusing and recycling more of what we don't need.

At Beeston Carnival, Greening Beeston volunteers gave out washable labels to stick on recycled plastic bottles to spread the message about using tap water rather than buying expensive bottled water.

Visitors were also invited to make a pledge to Change One Thing. Just some of the pledges made included:

- "donate all I can to charity shops"

- "keep a reusable shopping bag in my handbag"
- "only buy the fruit and veg that I need"

For more ideas on saving energy and saving money visit [www.greeninginbeeston.weebly.com](http://www.greeninginbeeston.weebly.com)



### The Easy Energy Switching Tool

A new domestic fuel switching tool has been launched by the Nottinghamshire Climate Change Partnership to provide a simple way to look for a cheaper deal for your gas and electricity.

Powered by Energylinx, the quick, hassle free tool could save you £100s a year on your household bills in just a few minutes.

With hundreds of energy tariffs available in the UK, switching supplier can seem daunting. The tool does all the hard work, all you need to do is input a

few details and select the best deal available to you.

The Nottinghamshire Climate Change Partnership is a collaboration of climate change representatives from local authorities, universities and organisations.

For more information, contact Nottingham Energy Partnership on 0115 985 9057. Switch online [www.climate Nottinghamshire.org.uk](http://www.climate Nottinghamshire.org.uk) or call 0800 410 1143



## Housing



### Stapleford's Community Clean Up

Stapleford was the focus of this year's summer community clean event as residents joined forces with Council employees and contractors, as well as Nottinghamshire Fire and Rescue and Police services in the Tevery Close/ Copeland Avenue area.

Families joined in with the activities, including a litter picking walk and a Swap-Shop which was also available on the day to reduce the number of unwanted items being thrown away as waste.

A skip was also available for residents to dispose of household and garden waste and a team of caretakers assisted residents in the area to

move and dispose of bulky items.

The event was organised by Broxtowe Borough Council to help support residents to take pride in their local area and to keep their neighbourhood clean.

The clean-up coincided with environmental improvements including hedge and grass cutting, a window cleaning service on the flats at Copeland Avenue and block cleaning and clearances.

For more information please contact 0115 917 3358, email [sarah.bird@broxtowe.gov.uk](mailto:sarah.bird@broxtowe.gov.uk) or visit [www.broxtowe.gov.uk/housing](http://www.broxtowe.gov.uk/housing)



Young resident Jason Day helps out at the Clean Up event.

### Tenant Says It With Cake

Great customer service goes a long way, as Broxtowe Borough Council's construction partner Bullock discovered when they were thrown a special thank you party from a happy resident.

Mrs Janet Ascough of Myrtle Grove, Beeston threw the party to show her appreciation to the work Bullock had completed as part of a kitchen and bathroom refurbishment.

Representatives from Bullock attended the party along with residents of Myrtle Grove and Humber Lodge, where they were presented with a special thank you cake.

Bullock are currently replacing around 400 bathrooms and kitchens each year in the homes of Broxtowe Borough Council's tenants as part of the Council's commitment to provide high quality

housing for our residents.

The Council has invested considerable money into maintaining its housing stock over many years. Most recently this investment has been used to modernise homes which did not meet the decency standard set by the Government.

For more information, please contact 0115 917 3659 or visit [www.broxtowe.gov.uk/housing](http://www.broxtowe.gov.uk/housing)

Residents and workmen from Bullock enjoy a slice of cake at the thank you party.



### Homeless Team Help Magistrates

The Council's Homeless Team attended the Nottingham Magistrates Court annual learning day in July to deliver a presentation on the problems and issues connected with homelessness.

The day was organised by the trustees of a charity established to provide Magistrates with the sort of "background" information that a normal Magistrate training syllabus does not always offer for them.

In court, Magistrates often come into contact with people who are homeless and the presentation was designed to better equip them to understand the issues connected with people who are homeless, as well as information on homeless legislation and the ways in which local authorities can help those without accommodation.

The event was very well received and will help Magistrates when they come into contact with people who are homeless or threatened with homelessness in the future.

For more information, please contact 0115 917 7777, email [housing@broxtowe.gov.uk](mailto:housing@broxtowe.gov.uk) or visit [www.broxtowe.gov.uk/housing](http://www.broxtowe.gov.uk/housing)

## Housing

### Men in Sheds Pilot Project

The Council are developing a 'Men in Sheds' Scheme to help support older men who want to get together to socialise and learn new skills, all in the welcoming space of a shed.

The Caretaking Team will provide the shed, tools, materials, equipment and practical support but are looking for 'Shedders' to join the project and help decide on the activities.

**For more information, please contact 0115 917 3358, email [housing@broxtowe.gov.uk](mailto:housing@broxtowe.gov.uk) or visit [www.broxtowe.gov.uk/housing](http://www.broxtowe.gov.uk/housing)**



### Retirement Living Redevelopment

**Residents of the soon to be redeveloped Wyndham Court, Chilwell have all been successfully relocated to their new homes with the help of an allocated key worker to assess their individual requirements.**

Six residents have moved to a new bespoke development on Hall Drive, Chilwell which is modern accommodation designed for tenants with learning disabilities.



The new development will provide residential homes that will be managed by Nottingham Community Housing Association.

Those eligible to be offered the new developments will be selected from Broxtowe Borough Council's housing register.

Before the Council handed over the site to developers, Nottinghamshire Fire and Rescue Service were given use of the building to carry out a number of

training exercises including a Safe Working at Height drill and a 'walk through' drill in the most realistic circumstances possible.

**For more information, please contact 0115 917 3443, email [housing@broxtowe.gov.uk](mailto:housing@broxtowe.gov.uk) or visit [www.broxtowe.gov.uk/housing](http://www.broxtowe.gov.uk/housing)**

### Retirement Living Community Café



**Deputy Mayor of the Borough of Broxtowe, Councillor Susan Bagshaw serves 91 year-old Roy Jackson at the Yew Tree Community Café.**

Residents of Yew Tree Court, Beeston opened the doors to their Retirement Living Scheme this summer to launch the Yew Tree Community Café.

The Community Café is a partnership pilot project between the residents of Yew Tree Court and Housing Services Officers and aims to provide a meeting place that encourages new friendships and understanding, particularly for people who may feel lonely or isolated.

The doors open each Wednesday between

10.00am and 12.00pm to people of all ages across the community for a range of refreshments including tea, cake and scones on a 'Pay as You Please' policy where customers may choose to pay all, some or none of the suggested prices on the menu.

Work is underway to transfer management responsibilities to volunteers and residents and it is hoped that other Community Cafés will open in other locations in the borough.

Broxtowe Borough Council's Retirement Living Schemes

offer self-contained flats or bungalows for people aged 60 or over to maintain their independence and freedom, whilst providing security and peace of mind with 24-hour access to an emergency Control Centre and a Retirement Living Officer during office hours.

**For more information, contact 0115 917 3037, email [housing@broxtowe.gov.uk](mailto:housing@broxtowe.gov.uk), visit [www.broxtowe.gov.uk/retirementliving](http://www.broxtowe.gov.uk/retirementliving) or visit [www.youtube.com/broxtowebc](http://www.youtube.com/broxtowebc) to see a video slideshow of the Community Café opening.**

## Community Safety



### Keep Safe this Christmas

The South Nottinghamshire Community Safety Partnership continues to work hard to reduce crime across South Nottinghamshire.

Measures used to reduce crime include high-visibility policing, covert operations, CCTV surveillance and security patrols. By raising awareness and increasing vigilance we can all help to reduce crime.

In the lead up to Christmas many of us will be shopping and socialising - here are a few tips to keep you safe when out and about.



#### Using cash points:

- Be aware of your surroundings, use another cash point if you see anything suspicious.
- Check that the machine appears normal before using it.
- When typing your PIN number ensure it cannot be seen.
- Only withdraw money you need, avoid carrying large amounts of cash.
- Put your money and cards away safely before leaving the machine.

#### Whilst shopping:

- Make sure your handbag, purse or wallet is secure and out of sight and never unattended.
- When typing your PIN number ensure it cannot be seen.
- Always close car windows, use a steering lock and lock doors.
- If you have to keep items in your car keep them out of sight in the boot.
- Park in a well-lit area, an attended car park or a safer car park displaying 'Park Mark' signage. For more information about Safer Car Parks visit [www.saferparking.com](http://www.saferparking.com)

#### When out at night:

- Ensure someone knows where you are and when you will be home.
- Plan how you will get home. Keep fares separate from your purse so you can still get home if you lose it.
- Don't leave bags on chair backs and keep purses and wallets close by.
- Drink responsibly, stay in groups, never accept drinks from strangers or leave drinks unattended.
- Don't drink and drive.
- Always check taxi drivers' identification, never get into an unlicensed taxi.
- When arriving home by taxi or car get your house keys ready.
- Never walk home alone, don't take shortcuts through alleys or open spaces.
- If you are being followed, cross the street and get to a busy place.

Remember, your safety and wellbeing is far more important than material belongings. Don't compromise your safety for a mobile phone or another valuable item. **KEEP IT SAFE! KEEP IT HIDDEN! KEEP IT LOCKED!**

### IMPORTANT CONTACTS

To find out about crime in Broxtowe check out the Neighbourhood Alert System at [www.broxtowecommunity.co.uk](http://www.broxtowecommunity.co.uk) or visit the Nottinghamshire Police website at [www.nottinghamshire.police.uk](http://www.nottinghamshire.police.uk)

In an emergency or to report a crime in progress contact the police on **999**.

To report information and suspicious activity contact the non-emergency Nottinghamshire Police number **101**.

To report crime anonymously contact Crimestoppers on **0800 555 111**



### Community Mediators Awards Evening



Broxtowe Borough Mediation Service celebrated its annual Presentation Evening earlier this year, with certificates presented to three new mediators.

Congratulations to Suzanne, Andrew and Lindsey who collected their Open College Network Certificates in Community Mediation from Mayor of the Borough of Broxtowe, Councillor Stan Heptinstall MBE on the night.

Broxtowe Borough Mediation Service works with the council to bring neighbours together, to give them a choice in how they resolve conflict with their neighbour.



Suzanne, Andrew and Lindsey collect their awards from the Mayor of the Borough of Broxtowe, Councillor Stan Heptinstall MBE.

The service trains its mediators to a nationally recognised standard in community mediation and this training is FREE to people who volunteer.

Not only can this training give you an opportunity to make a difference in your community, it could also improve your career prospects!

The next training course starts in 2015. Anyone interested in learning new skills and self-development should contact Sue or Dawn on 0115 917 3736.

### Early Help and Intervention in Nottinghamshire

Early Help services provide a range of universal and targeted services for families with children aged 0-12 years in need of support.

In Nottinghamshire, Early Help services include Nottinghamshire County Council's Targeted Support service and the Early Years and Early Intervention Service.

Early Help interventions can help children and young people who are not at immediate risk by

providing a key worker or lead professional who will co-ordinate the services involved with the child or young person and their family. Early Help support for children up to the age of 12 and their families are delivered through Children's Centres.

Targeted Support provides early help support for children and young people aged 8 to 18 including crime prevention, supporting families programmes, missing

children, substance misuse, problems with attendance, defiant behaviour issues at home or school, emotional health difficulties, young carers and support with finding work and training.

For more information contact the the Early Help Unit, Meadow House, Littleworth, Mansfield, Nottingham, NG18 2TB on 01623 433 500 or email [early.help@nottscc.gov.uk](mailto:early.help@nottscc.gov.uk)

If you have safeguarding concerns regarding a child or young person at immediate risk please contact the Nottinghamshire Multi Agency Safeguarding Hub (MASH) on 0300 500 8090.

# Waste & Recycling CALENDAR

## Garden Waste

See PAGE D for more information



WHY WASTE TIME . . .

. . . Do it online . . .

[www.broxtowe.gov.uk/gardenwasteform](http://www.broxtowe.gov.uk/gardenwasteform)

There's still time to join . . . use our online form for a quick and efficient service.

## Kerbside Textiles

**NEW**  
**KERBSIDE**  
**TEXTILE**  
**COLLECTION**  
**TRIAL SERVICE**

Our aim is to increase recycling and reduce the amount of textiles and shoes being disposed of in the black bin.

### How will the service work:

- Collections will start in November.
- Check your calendar for your glass collection.
- If you already use the services of local charities please continue to do so.

Starting this November - we will collect unwanted clothing and textiles on the same day as your kerbside glass collection.

**1 Bag it**

Place clean, dry clothing, textiles and shoes into a carrier bag(s) or a white bag(s). (No black bags)

**2 Tie it**

Squash the bag to remove trapped air and tie a knot to secure the contents.

**3 Recycle it**

Place the bag(s) out on your scheduled Collection Day next to your glass collection container...

## What textiles can we accept?

Yes Please

Items for re-use must be placed into carrier bags or white bags (no black bags) please. After grading, items not suitable for re-use will be recycled where possible.


No Thank you

Oily items - Carpets - Duvets, Cushions, Pillows, Quilts and Sleeping Bags

PULL OUT AND SAVE

- There are four collection areas across the borough
- Your current calendar will have your area's reference on it (bottom right i.e. **South A**, **South B**, **North A** or **North B** ).
- Select the calendar for your area from those below
- If you need to check your reference use the 'When is my collection' at [broxtowe.gov.uk](http://broxtowe.gov.uk)

**South A**

Week commencing dates are shown. On collection day bins should be out by 7.00am with lids closed.

**NO SIDE WASTE**

03-Nov-14						<b>CHRISTMAS AND NEW YEAR COLLECTION ARRANGEMENTS</b> Normally collected      Will be emptied on Monday 22nd Dec      Saturday 20th Dec Tuesday 23rd Dec      Monday 22nd Dec Wednesday 24th Dec      Tuesday 23rd Dec Thursday 25th Dec      Wednesday 24th Dec Friday 26th Dec      Saturday 27th Dec Monday 29th Dec      Monday 29th Dec Tuesday 30th Dec      Tuesday 30th Dec Wednesday 31st Dec      Wednesday 31st Thursday 1st Jan      Friday 2nd Jan Friday 2nd Jan      Saturday 3rd Jan
10-Nov-14	16-Feb-15	25-May-15	31-Aug-15			
17-Nov-14	23-Feb-15	01-Jun-15	07-Sep-15			
24-Nov-14	02-Mar-15	08-Jun-15	14-Sep-15			
01-Dec-14	09-Mar-15	15-Jun-15	21-Sep-15			
08-Dec-14	16-Mar-15	22-Jun-15	28-Sep-15			
15-Dec-14	23-Mar-15	29-Jun-15	05-Oct-15			
22-Dec-14	30-Mar-15	06-Jul-15	12-Oct-15			
29-Dec-14	06-Apr-15	13-Jul-15	19-Oct-15			
05-Jan-15	13-Apr-15	20-Jul-15	26-Oct-15			
12-Jan-15	20-Apr-15	27-Jul-15	02-Nov-15			
19-Jan-15	27-Apr-15	03-Aug-15	09-Nov-15			
26-Jan-15	04-May-15	10-Aug-15	16-Nov-15			

Black bin      Green and Brown-lidded bins      Green, Brown, Red lidded bins, Glass and Textiles bags

The colours indicate the bins serviced on your collection day.

For more information:  
 Go on-line: [www.broxtowe.gov.uk](http://www.broxtowe.gov.uk)  
 Email: [recycling@broxtowe.gov.uk](mailto:recycling@broxtowe.gov.uk) or Phone: 0115 917 7777.

During Bank Holiday weeks, collection days will roll forward one day i.e Monday moves to Tuesday... Good Friday remains the same.

**South B**

Week commencing dates are shown. On collection day bins should be out by 7.00am with lids closed.

**NO SIDE WASTE**

03-Nov-14						<b>CHRISTMAS AND NEW YEAR COLLECTION ARRANGEMENTS</b> Normally collected      Will be emptied on Monday 22nd Dec      Saturday 20th Dec Tuesday 23rd Dec      Monday 22nd Dec Wednesday 24th Dec      Tuesday 23rd Dec Thursday 25th Dec      Wednesday 24th Dec Friday 26th Dec      Saturday 27th Dec Monday 29th Dec      Monday 29th Dec Tuesday 30th Dec      Tuesday 30th Dec Wednesday 31st Dec      Wednesday 31st Thursday 1st Jan      Friday 2nd Jan Friday 2nd Jan      Saturday 3rd Jan
10-Nov-14	16-Feb-15	25-May-15	31-Aug-15			
17-Nov-14	23-Feb-15	01-Jun-15	07-Sep-15			
24-Nov-14	02-Mar-15	08-Jun-15	14-Sep-15			
01-Dec-14	09-Mar-15	15-Jun-15	21-Sep-15			
08-Dec-14	16-Mar-15	22-Jun-15	28-Sep-15			
15-Dec-14	23-Mar-15	29-Jun-15	05-Oct-15			
22-Dec-14	30-Mar-15	06-Jul-15	12-Oct-15			
29-Dec-14	06-Apr-15	13-Jul-15	19-Oct-15			
05-Jan-15	13-Apr-15	20-Jul-15	26-Oct-15			
12-Jan-15	20-Apr-15	27-Jul-15	02-Nov-15			
19-Jan-15	27-Apr-15	03-Aug-15	09-Nov-15			
26-Jan-15	04-May-15	10-Aug-15	16-Nov-15			

Black bin      Green and Brown-lidded bins      Green, Brown, Red lidded bins, Glass and Textiles bags

The colours indicate the bins serviced on your collection day.

For more information:  
 Go on-line: [www.broxtowe.gov.uk](http://www.broxtowe.gov.uk)  
 Email: [recycling@broxtowe.gov.uk](mailto:recycling@broxtowe.gov.uk) or Phone: 0115 917 7777.

During Bank Holiday weeks, collection days will roll forward one day i.e Monday moves to Tuesday... Good Friday remains the same.

**North A**

Week commencing dates are shown. On collection day bins should be out by 7.00am with lids closed.

**NO SIDE WASTE**

03-Nov-14						<b>CHRISTMAS AND NEW YEAR COLLECTION ARRANGEMENTS</b> Normally collected      Will be emptied on Monday 22nd Dec      Saturday 20th Dec Tuesday 23rd Dec      Monday 22nd Dec Wednesday 24th Dec      Tuesday 23rd Dec Thursday 25th Dec      Wednesday 24th Dec Friday 26th Dec      Saturday 27th Dec Monday 29th Dec      Monday 29th Dec Tuesday 30th Dec      Tuesday 30th Dec Wednesday 31st Dec      Wednesday 31st Thursday 1st Jan      Friday 2nd Jan Friday 2nd Jan      Saturday 3rd Jan
10-Nov-14	16-Feb-15	25-May-15	31-Aug-15			
17-Nov-14	23-Feb-15	01-Jun-15	07-Sep-15			
24-Nov-14	02-Mar-15	08-Jun-15	14-Sep-15			
01-Dec-14	09-Mar-15	15-Jun-15	21-Sep-15			
08-Dec-14	16-Mar-15	22-Jun-15	28-Sep-15			
15-Dec-14	23-Mar-15	29-Jun-15	05-Oct-15			
22-Dec-14	30-Mar-15	06-Jul-15	12-Oct-15			
29-Dec-14	06-Apr-15	13-Jul-15	19-Oct-15			
05-Jan-15	13-Apr-15	20-Jul-15	26-Oct-15			
12-Jan-15	20-Apr-15	27-Jul-15	02-Nov-15			
19-Jan-15	27-Apr-15	03-Aug-15	09-Nov-15			
26-Jan-15	04-May-15	10-Aug-15	16-Nov-15			

Black bin      Green and Brown-lidded bins      Green, Brown, Red lidded bins, Glass and Textiles bags

The colours indicate the bins serviced on your collection day.

For more information:  
 Go on-line: [www.broxtowe.gov.uk](http://www.broxtowe.gov.uk)  
 Email: [recycling@broxtowe.gov.uk](mailto:recycling@broxtowe.gov.uk) or Phone: 0115 917 7777.

During Bank Holiday weeks, collection days will roll forward one day i.e Monday moves to Tuesday... Good Friday remains the same.

**North B**

Week commencing dates are shown. On collection day bins should be out by 7.00am with lids closed.

**NO SIDE WASTE**

03-Nov-14						<b>CHRISTMAS AND NEW YEAR COLLECTION ARRANGEMENTS</b> Normally collected      Will be emptied on Monday 22nd Dec      Saturday 20th Dec Tuesday 23rd Dec      Monday 22nd Dec Wednesday 24th Dec      Tuesday 23rd Dec Thursday 25th Dec      Wednesday 24th Dec Friday 26th Dec      Saturday 27th Dec Monday 29th Dec      Monday 29th Dec Tuesday 30th Dec      Tuesday 30th Dec Wednesday 31st Dec      Wednesday 31st Thursday 1st Jan      Friday 2nd Jan Friday 2nd Jan      Saturday 3rd Jan
10-Nov-14	16-Feb-15	25-May-15	31-Aug-15			
17-Nov-14	23-Feb-15	01-Jun-15	07-Sep-15			
24-Nov-14	02-Mar-15	08-Jun-15	14-Sep-15			
01-Dec-14	09-Mar-15	15-Jun-15	21-Sep-15			
08-Dec-14	16-Mar-15	22-Jun-15	28-Sep-15			
15-Dec-14	23-Mar-15	29-Jun-15	05-Oct-15			
22-Dec-14	30-Mar-15	06-Jul-15	12-Oct-15			
29-Dec-14	06-Apr-15	13-Jul-15	19-Oct-15			
05-Jan-15	13-Apr-15	20-Jul-15	26-Oct-15			
12-Jan-15	20-Apr-15	27-Jul-15	02-Nov-15			
19-Jan-15	27-Apr-15	03-Aug-15	09-Nov-15			
26-Jan-15	04-May-15	10-Aug-15	16-Nov-15			

Black bin      Green and Brown-lidded bins      Green, Brown, Red lidded bins, Glass and Textiles bags

The colours indicate the bins serviced on your collection day.

For more information:  
 Go on-line: [www.broxtowe.gov.uk](http://www.broxtowe.gov.uk)  
 Email: [recycling@broxtowe.gov.uk](mailto:recycling@broxtowe.gov.uk) or Phone: 0115 917 7777.

During Bank Holiday weeks, collection days will roll forward one day i.e Monday moves to Tuesday... Good Friday remains the same.

## Garden Waste

**Good news** - The Garden Waste Service will continue fortnightly throughout the winter period.

**Still not joined?** - For the remaining 5 months (1st November to the 31st March), the cost of a brown-lidded bin will be reduced.

The service charge remains the same at £20 and the price per brown-lidded bin will only be £5.

To join go online to:

[www.broxtowe.gov.uk/gardenwasteform](http://www.broxtowe.gov.uk/gardenwasteform)

Over 16,000 residents are using this service



Please place the payment label in this position



**WHY WASTE TIME . . .**

**. . . Do it online . . .**

[www.broxtowe.gov.uk/gardenwasteform](http://www.broxtowe.gov.uk/gardenwasteform)

## Garden Waste prices 2015/16

The charges will be:

- £20 service charge
- Plus £10 for each bin
- i.e. a property with 2 brown-lidded bins will pay the £20 service charge and £10 for each bin - a total £40

Payment can be taken online only from 3rd of November using this link:

[www.broxtowe.gov.uk/gardenwasteform](http://www.broxtowe.gov.uk/gardenwasteform)

## Real Christmas tree recycling



Garden waste subscribers, don't forget in January we will collect your real Christmas trees with the garden waste.

Please chop up and place in your brown-lidded bin.

If under 1.5 metres leave in a safe place at the side of the brown-lidded bin.

## Recycling

**Please do not place these items of plastic in the green lidded bin.**



- Plastic toys
- Plastic carrier bags
- Plastic wrap
- Plastic food trays
- Crisp packets
- Plastic cling film
- Any plastic bags
- Plastic packaging
- Polystyrene
- Plastic bubble-wrap
- Plastic fruit and vegetable containers

The above plastics cannot be recycled at the Materials Recycling Facility.

Thank you

For more information on the above, **free glass bins (red lid)** and 'When is my Collection' Go online at [www.broxtowe.gov.uk/recycling](http://www.broxtowe.gov.uk/recycling) or email: [recycling@broxtowe.gov.uk](mailto:recycling@broxtowe.gov.uk)



## Broxtowe Council's Marathon Man

It was on your marks, get set, go for the Mayor's champion, Luke Cairney as he took part in the Ikano Robin Hood Half Marathon to raise funds for the Mayor's Charities, Cancer Research UK and Hope Nottingham.

As one of the Council's Town Centres Team, Luke can usually be found supporting local

businesses and arranging town centre events but September saw him become the Council's very own marathon man.

**For more information on how you can support the Mayor's charities contact 0115 917 3210, email [civic@broxtowe.gov.uk](mailto:civic@broxtowe.gov.uk) or visit [www.broxtowe.gov.uk/civic](http://www.broxtowe.gov.uk/civic)**

## Town Centre Occupancy Success

The Council's Town Centres Team has been working hard over the last year to attract businesses and investors into the borough and Broxtowe's town centre occupancy rates are increasing at a faster rate of recovery than the national average.

A number of initiatives have taken place including:

- A programme of events in the town centres in conjunction with the Town Teams and Town Councils to help generate footfall.
- Supporting local businesses to attract new customers through free training workshops.
- Work to find temporary uses for empty

properties such as pop up shops or virtual shops to encourage investors to see the unit's potential.

In early 2013 the total of all of Broxtowe's occupied ground floor retail and leisure premises was -0.3% below the national average occupancy figure. This figure has now increased to +3.5% over the national average.

Occupancy figures for each town can be found online at [www.broxtowe.gov.uk/towncentres](http://www.broxtowe.gov.uk/towncentres) and are updated monthly. Here you can also view footfall figures for Beeston town centre, which are updated weekly.

## Jobs and Business Growth



## Local Jobs For Local People

Two Jobs Fairs have taken place in the borough over the past few months to give local people a chance to engage with potential employers and enable them to get the advice they need to help them access work, skills training, apprenticeships and new employment opportunities.

The events in Beeston and Eastwood were organised by the Nottingham Post in conjunction with Broxtowe Borough Council, Nottinghamshire County Council, Job Centre Plus and Eastwood Town Council.

A wide range of local vacancies for local people were advertised at the events, from employers including YU Energy, the Armed Forces, Avon, Princes Trust and Broxtowe Borough Council.

There was also expert advice on how to write a C.V, information on apprenticeships,

application forms and training from Central College, Care Training and Derby Business College.

Job Fairs are a great way to meet potential employers face-to-face for the first time, network and get advice and information on how to increase your chances of getting back into employment.

Broxtowe Borough Council is committed to helping ensure that more jobs, work experience and apprenticeships are available for people in Broxtowe.

All the Council's vacancies are advertised as they arise in local job centres, on [www.eastmidlandsjobs.org.uk](http://www.eastmidlandsjobs.org.uk), on the Council's website at [www.broxtowe.gov.uk/jobs](http://www.broxtowe.gov.uk/jobs) and in the local and national press.

**For more information, please contact 0115 917 3372 or email [hrd@broxtowe.gov.uk](mailto:hrd@broxtowe.gov.uk)**





## Jobs and Business Growth

### What's Happening In Our Town Centres?

The Stapleford Town Team continues to meet monthly, with a programme of upcoming events including the 'Start Your Christmas in Stapleford' 2014 light switch on event. The Town Team have arranged a lane closure opposite Walter Parker V.C Square this year due to anticipated numbers based on last year's success.

In Eastwood, businesses have been working together to create their own Facebook page promoting the town centre as a great place to shop and relax, showcasing local business and posting the latest news and events happening locally. For more information, visit [www.facebook.com/eastwoodtowncentre](http://www.facebook.com/eastwoodtowncentre) to see some of the things Eastwood Town Centre has to offer.

The Council's Town Centres Team have also been involved in work to ensure that Broxtowe is a dementia friendly community, following the signing of a Dementia Action Alliance Declaration in May 2014.

This will include training to help businesses become more aware of dementia and identify customers with the condition so that they can provide them with the best and most help service they can.

**For more information please contact the Town Centre Management Team on 0115 917 3043, email [towncentres@broxtowe.gov.uk](mailto:towncentres@broxtowe.gov.uk) or visit [www.broxtowe.gov.uk/towncentres](http://www.broxtowe.gov.uk/towncentres)**

**You can read more about the Dementia Action Alliance Declaration on page 18.**

### Shop Local at Town Centre Markets



Are you looking for a unique gift or locally produced goods, some plants to enhance your home or just grabbing lunch on the go? Try something different at one of Broxtowe's town centre markets.

Organised by not-for-profit market organiser Stall-It, the markets offer a diverse range of products and excellent value for money.

As well as the weekly markets, arts and crafts fairs and specialist markets will continue, including a new specialist market in Kimberley as part of a partnership between Stall-it and the organisers of the previous Kimberley farmers market.

Come and see what your town centres have to offer on the following market days:

Town	Location	Day	Time
Beeston	Beeston Square	Mondays	9.00am – 3.00pm
Stapleford	Walker Parker V.C Square	Tuesdays	9.00am – 3.00pm
Kimberley	Greens Lane Shopping Precinct	1 <sup>st</sup> Saturday of the month	9.00am – 1.00pm

### Test Drive Your Business Idea

Stapleford Town Team are giving local schools, colleges, community groups, charities and businesses a unique opportunity to test drive their business ideas with free hire of a gazebo and a space at Stapleford's weekly market.

Anyone who wants to try out their ideas, promote their business in an alternative way and meet with customers can take advantage of the gazebo hire on a first come first served basis and a market space at the weekly market held at Walter Parker V.C.

Square every Tuesday for just £10.00 per day.

**INTERESTED? Contact the Town Centres Team on 0115 917 3043, email [towncentres@broxtowe.gov.uk](mailto:towncentres@broxtowe.gov.uk) or visit [www.staplefordtowncentre.com](http://www.staplefordtowncentre.com)**



## Bringing People Together



### Kimberley Pride at Freedom Parade

Kimberley marked an historic day in May as 150 soldiers from 170 (Infrastructure Support) Engineer Group marched through the town during a special military parade, along with veterans from the Royal Engineers Association and led by the Nottinghamshire Band of the Royal Engineers (Volunteers). Also in attendance was Chief of Staff, HQ Army, Major General TR Urch CBE (Late RE) and HM Lord Lieutenant of Nottinghamshire, Sir John Peace.

Thousands of residents took to the streets to give a rousing welcome to its Army heroes when the Group, based at Chilwell,



*Soldiers march along Eastwood Road, Kimberley.*

exercised their Right of Freedom of Entry to the Borough of Broxtowe by marching through Kimberley, following tours of duty in Afghanistan.

Residents cheered the troops on parade, followed by a Drum Head Service

in Hall Om Wong Park to commemorate the centenary of the First World War.

A Homecoming Parade will take place in Beeston on Friday 5th December – look out for more details soon.

**For more information, please contact Broxtowe Borough Council on 0115 917 3210, email [civic@broxtowe.gov.uk](mailto:civic@broxtowe.gov.uk) or visit [www.youtube.com/broxtoweabc](http://www.youtube.com/broxtoweabc) to see a video slideshow of the day.**

### £50,000 Funding Boost For Healthy Living

Broxtowe residents are benefiting from a funding boost of more than £50,000 for projects to help improve their health and wellbeing.

26 community projects received grants of up to £2,500 from NHS Nottingham West Clinical Commissioning Group as part of the Lifestyle Fund to support local initiatives that aim to improve health and reduce health inequalities.

Groups that will benefit include:

- Aaj Kall, received £2,450
- Age UK received £1,850

- Beeston Dementia Friends received £1,400 towards a Memory Café. Read more on page 19.

- Breathe Easy, received £1,500

- Broxtowe Sport received £1,500 for a Bring Baby Gym. Read more on page 21.

- Broxtowe Walk and Talk received £1,000

- Broxtowe Women's Project received £2,500

- Chinese Early Year Healthy Eating Project received £2,500

- A Stapleford based allotment society received £2,500

- Hollywell Primary School received £2,500 to become a Forest School

- Hope Health Liaison & Support received £2,500

- Kimberley Pensioners Association received £1,000

- Monday Movers received £2,500

- Friday Community Group received £1,500

- A project to encourage effective oral hygiene for under-fives received £2,500.

Other projects included support for a scheme that helps carers of children

with disabilities, a project that provides free cycle training for disabled people and exercise classes for people over 55 in Awsworth and Cossall.

Lifestyle Fund applications were awarded by a panel of members made up of NHS Nottingham West CCG, Broxtowe Borough Council, Public Health and Voluntary Action Broxtowe.

**For more information, contact 0115 917 3431, email [health@broxtowe.gov.uk](mailto:health@broxtowe.gov.uk) or visit [www.broxtowe.gov.uk/partnership](http://www.broxtowe.gov.uk/partnership)**



## Bringing People Together

### Got An Issue – Put It On Broxtowe Council's Agenda

The ageing population, allotments, the night time economy and the Council's website are just a few of the issues that the Overview and Scrutiny committee at Broxtowe Borough Council has examined.

With over 30 meetings a year the scrutiny committee investigates issues of importance to local residents groups and organisations and are keen to encourage the community to suggest new topics for future meetings.

Topics for scrutiny can be put forward by anyone and by raising the issues that matter to them they can help ensure they come to the attention of the decision makers.

The Council's scrutiny programme looks at a diverse range of issues and more importantly the committee invites witnesses, experts and users to come along to the meetings to inform and discuss recommendations for improvement.

The criteria for selection of topics are mainly around something that is important to the Council and its service delivery as set out in its Corporate Priorities.

**For more corporate information on the full criteria topics must meet or how to get involved contact 0115 917 3278 or email [scrutiny@broxtowe.gov.uk](mailto:scrutiny@broxtowe.gov.uk)**

**All meeting dates, minutes and agendas are published on the website at [www.broxtowe.gov.uk/committees](http://www.broxtowe.gov.uk/committees)**

### Save the date - Spring into Summer Ball!



Don't miss the Spring into Summer Charity Ball and Civic Night on Saturday 28th March 2015 at the Nottingham Belfry Hotel.

The event will help raise money for the Mayor of the Borough's chosen charities, Cancer Research UK and Hope Nottingham.

To show your support for these two worthy causes and to secure your tickets in advance, please contact 0115 917 3210, email [civic@broxtowe.gov.uk](mailto:civic@broxtowe.gov.uk) or visit [www.broxtowe.gov.uk/civic](http://www.broxtowe.gov.uk/civic)

**Alternatively, you can support the charities by making a donation at:**

- Hope Nottingham - <https://my.give.net/BroxtoweMayorSupportsHope>
- Cancer Research UK - <http://www.justgiving.com/broxtowe-mayor-2014-2015>

Residents can also see videos of recent events such as the Kimberley Freedom Parade, the Hemlock Happening and the latest Mayor's visits on the Council's YouTube channel at [www.youtube.com/broxtowebc](http://www.youtube.com/broxtowebc).

**To find out how you can join in the conversation on social media visit [www.broxtowe.gov.uk/socialmedia](http://www.broxtowe.gov.uk/socialmedia)**

### Making Broxtowe A Dementia Friendly Community



**Helen Byrne, from Alzheimer's Society, Mayor of the Borough of Broxtowe, Councillor Stan Heptinstall MBE and Chief Executive of Broxtowe Borough Council, Ruth Hyde OBE sign the Council's Dementia Action Alliance Declaration.**

Broxtowe Borough pledged its support to people with dementia earlier this year by officially signing a Dementia Action Alliance Declaration to help local people 'live well with dementia'.

In Nottinghamshire alone, there are thought to be more than 13,000 people living with dementia who often feel isolated and stigmatised.

The Council is determined to break down this barrier so that residents can 'live well with dementia' and has already made great strides towards a 10-point plan, identified by its Scrutiny Committee to combat the stigma associated with dementia.

**For more information please contact Broxtowe Borough Council on 0115 917 3548 or visit [www.broxtowe.gov.uk/dementia](http://www.broxtowe.gov.uk/dementia)**

Broxtowe Borough Council uses a number of social media networks to communicate with residents, businesses, community groups and partners and promote upcoming events, news and service updates, as well as pictures and videos from recent events.

**The Council's mascot, Brock the Badger shows Mayor of the Borough of Broxtowe, Councillor Stan Heptinstall MBE the Council's Facebook page.**



[www.broxtowe.gov.uk/socialmedia](http://www.broxtowe.gov.uk/socialmedia)

### Christmas Lights up Broxtowe

Be sure to enjoy the festive season with Christmas lights switch on events across the borough:

- **Stapleford** – Saturday 22nd November 2014, 10.30am – 7.00pm, Stapleford Town Centre (Fireworks at 6.30pm)
- **Eastwood** – Tuesday 25th November 2014, 6.00pm – 8.45pm, Eastwood Town Centre (Fireworks at 7.45pm)
- **Beeston** – Saturday 29th November 2014, 12.00pm – 6.45pm, Broadgate Park (Fireworks at 6.00pm)
- **Kimberley** - Friday 28th November 2014, parade begins at 6.15pm from Holy Trinity Church Hall finishing at Talbot Square (Fireworks at 7:15pm). For more information contact Kimberley Town Council on 0115 938 2733.



Visit the What's on Where (WOW) online events calendar to see what other Christmas events are taking place in your area at [www.broxtowe.gov.uk/wow](http://www.broxtowe.gov.uk/wow)

### Beeston Memory Café

Broxtowe Borough's commitment this year to being a Dementia Friendly Community has caught the interest of many people. Nearly all of us know someone with dementia and we fear it more than cancer. In Nottinghamshire more than 13,000 people have dementia.

A group of people from Beeston have set up a Beeston Dementia Friends Group and decided to open a Memory Café. Working closely with the Alzheimer's Society and Broxtowe Borough Council they have also been supported by the Nottingham West Clinical Commissioning Group.

They began by organising Dementia Friends sessions where people can learn more about dementia and how they can help in many small ways. Members of the group visited other Memory Cafés in

Nottingham organised by the Alzheimer's Society but as there was nothing in Beeston it was decided to open one there. They have been amazed and encouraged at the interest and support shown at the first sessions.

The café will meet at Middle Street Centre, Beeston NG9 2AR from 2.00pm to 4.00pm every second Thursday of the month including, 13 November, 11 December and so on.

The café is a safe, friendly venue where folk with dementia and those who support them can meet. Café sessions include social activities, information and the opportunity to meet and get to know new people.

**For more information, email [beestonmemorycafe1@btinternet.com](mailto:beestonmemorycafe1@btinternet.com)**



### Could You Volunteer at D.H. Lawrence Heritage?

Are you looking to gain valuable career experience? Interested in local history and meeting the community? Eastwood's D.H. Lawrence Heritage may have the perfect answer for you as they are on the look-out for enthusiastic volunteers to work at the unique D.H. Lawrence Heritage Centre and D.H. Lawrence Birthplace Museum.

From delivering guided tours and walks and helping out at special events to working with education and school groups or manning promotional stands at external events, volunteers will be able to get involved in a variety of ways.

All those who get involved are asked to commit themselves to at least one day a month, with other options available to discuss.

**For more information, contact D.H. Lawrence Heritage on 01773 717353, email [culture@broxtowe.gov.uk](mailto:culture@broxtowe.gov.uk) or visit [www.dhlawrenceheritage.org](http://www.dhlawrenceheritage.org)**

**You can also find D.H. Lawrence Heritage on Facebook as well as on Twitter by following @dhlheritage**



**D.H. Lawrence Birthplace Museum**

## Bringing People Together

### Eastwood Celebrates Its Favourite Son

Fans of Nottinghamshire's literary legend, D. H. Lawrence came together for a packed programme of over 40 events to celebrate his life and work in and around his hometown of Eastwood in September.

Hosted by D.H. Lawrence Heritage, the Festival included a variety of activities from exhibitions, guided walks and bus tours to a heritage open weekend, reading groups, music and drama, as well as

special film screenings and lectures.

This year's Festival also commemorated the centenary of the outbreak of the First World War by exploring how the war affected Lawrence, his life, his work and the lives of those at home in Eastwood in the Festival's central exhibition at the D.H. Lawrence Heritage Centre, which is open until Sunday 2nd November.

Highlights included Eastwood Does Vintage, Life On The Home Front Day, a Mining Heritage Bus Tour and the Heritage Open Weekend.

**For more information contact D.H. Lawrence Heritage on 01773 717 353, email [culture@broxtowe.gov.uk](mailto:culture@broxtowe.gov.uk) or visit [www.dhlawrenceheritage.org](http://www.dhlawrenceheritage.org) or find them on facebook and twitter @DHLHeritage**

### Volunteers - Broxtowe Sport Needs You!

Have you got an hour or two a week to spare? Would you like to meet new people and learn new skills? If so, why not become a Broxtowe Sport Volunteer!

In Broxtowe, there are hundreds of volunteers regularly volunteering in sport every week. From coaching the team, to washing the kit, volunteers are vital to enable sport to run successfully.

Volunteering is all about giving up some of your spare time to do something useful for other people. All you need to volunteer is a little spare time and the enthusiasm to help others succeed. You don't have to be a 'sporty' person to volunteer, as there are many roles to fulfill.

Broxtowe Sport are currently looking for volunteers to support a programme of activities including poolside helpers

for Broxtowe's Swim School, Walk Leaders for a programme of walks, Run Leaders for the Borough's running groups and Cycle Leaders for TravelRight Broxtowe's cycling centres.

**To find out further information and to register your interest call Broxtowe Sport on 0115 917 3752 or visit [www.broxtowe.gov.uk/](http://www.broxtowe.gov.uk/) volunteer and complete the online application form.**

### Armed Forces Pledge Receives Further £68,297 Support

The Broxtowe Community Covenant has attracted a further £68,297 of funding towards a project to support armed forces families across Nottinghamshire and North Leicestershire who do not live on the Chetwynd Barracks site, Chilwell but are stationed there.

Families who do not live at the Barracks often feel isolated, particularly when one parent is deployed overseas. The project, run by the Nottinghamshire YMCA, is designed to bring these families into their local communities and to engage 'non-military' families from the same area.

The project is the sixth successful application to receive Ministry of Defence Funding since the Broxtowe Borough Community Covenant pledge was signed in January 2012, with over £288,000 received so far.

**For more information about the Community Covenant contact Broxtowe Borough Council on 0115 917 3492 or email [spc@broxtowe.gov.uk](mailto:spc@broxtowe.gov.uk)**



## Broxtowe Sport News

There are sports and physical activity opportunities for people of all ages and abilities across the borough.

### Baby Friendly Gym

Get back into fitness after having a baby with one of four new weekly Bring Baby Gym and Exercise Classes sessions at Bramcote Leisure Centre. Wednesdays, 2.00pm - 3.00pm, £4.35 with a leisure card. Find out more at [www.broxtowe.gov.uk/newmums](http://www.broxtowe.gov.uk/newmums) or call Bramcote Leisure Centre on 0115 917 3000.



Mary McConnell and baby Alex enjoy Baby Gym

### Running in Broxtowe

There have never been so many opportunities to run in Broxtowe from sessions for seasoned and competitive runners to complete beginners and all female groups including:

- Broxtowe Ladies Beginners Running Group every Tuesday evening, 6.30pm at Bramcote Hills Park [www.broxtowe.gov.uk/women](http://www.broxtowe.gov.uk/women)
- Free mixed coaching and training drills every Monday at 6.30pm at Brinsley Recreation Ground [www.broxtowe.gov.uk/adultparticipation](http://www.broxtowe.gov.uk/adultparticipation)
- 5K Beeston Parkrun, every Saturday at 9.00am at Weirfields Recreation Ground, Beeston Rylands [www.parkrun.org.uk/beeston](http://www.parkrun.org.uk/beeston)

### Walking Sports

You can now play the sports you love, at a slower pace! Walking Sports sessions are taking place across the Borough of Broxtowe for anyone looking for some gentle exercise. First session is free, tea and coffee afterwards.

- Walking Football, Mondays at Kimberley Leisure Centre, 11.00am -12.00pm
- Walking Football, Wednesdays at Bramcote Leisure Centre, 2.00pm - 3.00pm
- Steady Cricket, Thursdays at Greasley Sports Centre, 10.00am -11.00am
- Walking Netball Thursdays at Greasley Sports Centre, 11.00am - 12.00pm

### 2015 Sports Events - Make it your year!

Make 2015 your sporting year and take part in one of Broxtowe Sports 2015 Sports Events! There are lots of challenges to take part in throughout the year including a 5K, a Triathlon and an Aquathlon!

There are events for children and adults, the super fit and even beginners, and competitors will receive a free goodie bag on behalf of

international Sports Retailer and event partner Decathlon. Dates and discounted online entry available from January [www.broxtowe.gov.uk/sportsevents](http://www.broxtowe.gov.uk/sportsevents)

**For more information, visit [www.broxtowe.gov.uk/exercise4me](http://www.broxtowe.gov.uk/exercise4me) to find out about the latest sport and exercise opportunities to suit you or contact Broxtowe Sport on 0115 917 3572, email [sport@broxtowe.gov.uk](mailto:sport@broxtowe.gov.uk)**



**The Helpful Bureau**  
We are a registered charity whose aim is to help older people remain independent in their home. We offer several services to those within the Broxtowe area. If you are interested in using any of our services, then please contact the office on the details below:

Phone: 01159 491175  
E-mail: [admin@thehelpfulbureau.org.uk](mailto:admin@thehelpfulbureau.org.uk)  
[www.thehelpfulbureau.org.uk](http://www.thehelpfulbureau.org.uk)

#### Practical Services

**Gardening** – from lawn/hedge cutting, digging boarders, planting, weeding, full garden clearance.  
**Handy Man** – fitting security equipment, erecting shelves, small Plumbing and Electrical repairs, putting up rails and curtains, insulation, assembling flat packs.

#### Volunteer Transport Scheme

If you have difficulty using public transport then our volunteer drivers can be booked to take you to medical appointments, shopping, visiting etc. We also have a wheelchair accessible vehicle which available to residents of Broxtowe and is driven by volunteers who are fully trained.

**Decorating** – gloss painting woodwork, emulsion painting walls and ceilings, wallpapering a feature wall.  
**Domestic Support** – Ironing, cleaning, shopping, collecting prescriptions, vacuuming, making beds, indoor window cleaning.

#### Community Outreach Advisor

Our community outreach advisor is happy to visit and chat about issues that are important to you. You will be given advice and information on a range of services for older adults.

#### Socialising

We offer many activity groups, these include, silver surfers, craft club, games, lunch club, movement to music, day trips. Plus many more.

Company No: 04155890 Registered Charity Number: 1085498

# Money Matters

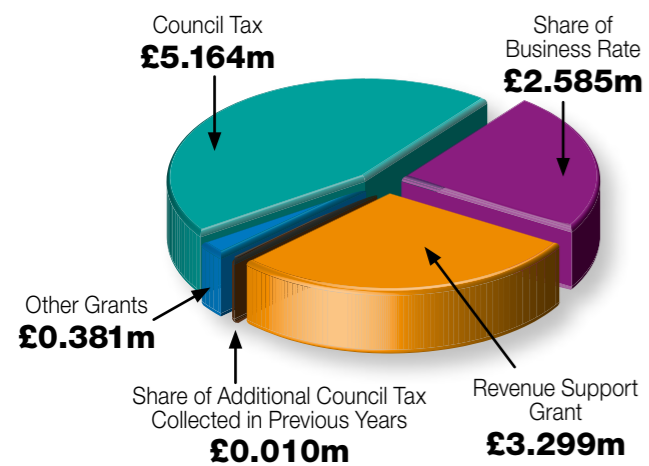
## 2013/14 Annual Report Summary

Each year Broxtowe Borough Council must decide how it will spend the money it receives from the council tax you pay and the government grant and other income we receive.

### GENERAL FUND

This covers all the day-to-day running costs of the Council's services with the exception of council housing. It includes salaries and wages, fuel, transport and general office running costs as well as income from fees and charges.

#### How the money was raised



Revenue Support Grant from the Government	£3.299m
Share of Business Rates	£2.585m
Council Tax	£5.164m
Other Grants	£0.381m
Share of Additional Council Tax Collected in Previous Years	£0.010m
<b>TOTAL</b>	<b>£11.439m</b>

#### Where the money was spent



**TOTAL General Fund Spend £10.653m**

The main spending areas include: refuse collection and recycling, leisure centres, community events, street cleansing, crime and disorder, interest payable on outstanding loans and parks and open spaces. Over £22.4 million was spent on housing benefit which is almost entirely reimbursed by the government.

The Council receives a grant from the government towards the cost of these services and a share of income collected from business rates. Council tax meets almost one half of the net cost of these services.

In 2013/14 income exceeded expenditure by £0.786 million and this was added to the Council's general fund reserve, which totalled £4.741 million at the end of 2013/14.

The net expenditure of £10.653 million represented an under spend of £0.334 million against the budget. A number of factors contributed to the under spend including income from land charge fees and interest on external investments. Part of the under spend, totalling £0.236 million, has been carried forward to 2014/15 to enable work originally planned for 2013/14 to be completed.

#### Annual Report Statistics The figures on these two pages show you how we did in 2013/14.

More detailed information about the Council's finances can be found in the annual statement of accounts available from the Council Offices and on the web site at [www.broxtowe.gov.uk](http://www.broxtowe.gov.uk)

If you have any comments or queries about the accounts summary or the Council's finances generally, please write to the Deputy Chief Executive at Broxtowe Borough Council, telephone 0115 917 3228 or email [finance@broxtowe.gov.uk](mailto:finance@broxtowe.gov.uk)

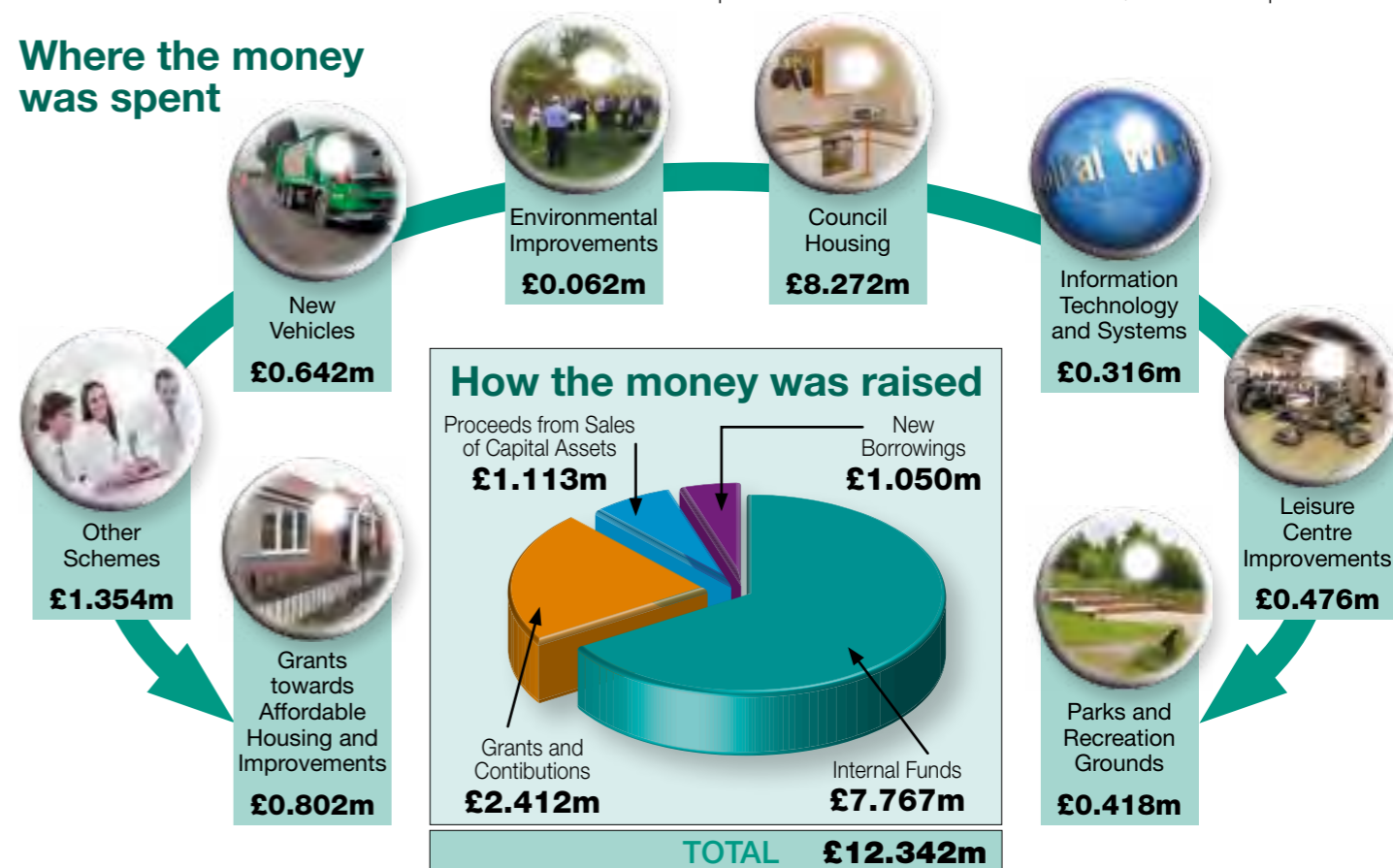
### CAPITAL SPENDING

In 2013/14 £3.349 million of the financing for capital projects came from the Major Repairs Reserve. Significant expenditure was financed from other grants and contributions including sums received from Nottinghamshire County Council towards a local authority mortgage scheme, the East Midlands Regional Housing Board to increase the proportion of vulnerable households in the private sector that live in decent homes and the Kimberley School towards schemes at Kimberley Leisure Centre.

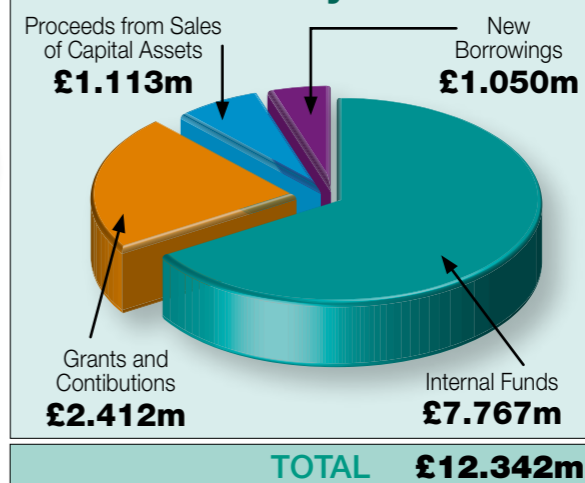
Shortfalls to meet the cost of the capital projects are generally met from additional borrowing. New borrowing of £1.050 million was taken in 2013/14 to bring the overall level of borrowing to £88.824 million at 31 March 2014. Interest payable on this borrowing is included within the General Fund or Housing Revenue Account.

Capital Spending in 2013/14 included £3.808 million on a housing modernisation programme and £2.409 million on gas and energy improvements to maintain the council housing stock at or above the Decent Homes Standard plus £0.429 million on grants to help the disabled to remain in their own homes. A sum of £0.560 million has been carried forward to 2014/15 to enable capital schemes that commenced in 2013/14 to be completed.

#### Where the money was spent



#### How the money was raised



### HOUSING REVENUE ACCOUNT

This account relates to the day-to-day costs and income in respect of council housing. Income is predominantly from council house and garage rents. The Council fixes rent levels annually, in line with guidance issued by the government.

Over a quarter of the expenditure is on day-to-day repairs and maintenance of the housing stock. This is in addition to the more substantial modernisation schemes. At 31 March 2014 Council's housing stock totalled 4,608 properties.

#### How the money was raised

Housing Rent Income	£15.823m
Garage Rent Income	£0.160m
Supporting People grant	£0.543m
Fees and Charges	£0.071m
<b>TOTAL</b>	<b>£16.597m</b>

#### Where the money was spent

Repairs and Maintenance	£4.206m
Supervision and Management	£3.975m
Capital Expenditure financed by HRA	£3.784m
Charges for Capital	£6.031m
<b>TOTAL</b>	<b>£17.996m</b>

In 2013/14 expenditure exceeded income by £1.399 million and this was deducted from the Housing Revenue Account balance, which totalled £1.945 million at the end of the year.

The Housing Revenue Account outturn for 2013/14 showed an under spend of £0.930 million against the revised budget. A sum of £0.028 million has been carried forward to 2014/15 to enable schemes that commenced in 2013/14 to be completed.

# Broxtowe Borough Council

## Useful addresses and telephone numbers

### COUNCIL SERVICES

Council Offices & Town Hall  
Foster Avenue  
Beeston, NG9 1AB

Stapleford Office  
Carnegie Civic & Community Centre  
Warren Avenue, Stapleford, NG9 8EY

Eastwood Customer Services Shop  
15 Nottingham Road, Eastwood, NG16 3AP

Kimberley Depot  
Eastwood Road, Kimberley, NG16 2HX

**All above offices**  
**Tel: 0115 917 7777**

[www.broxtowe.gov.uk](http://www.broxtowe.gov.uk)

### COUNCIL HOUSING REPAIRS

Daytime and out of hours  
**Tel: 0115 917 7777**

### TOURISM AND LEISURE FACILITIES

D.H. Lawrence Heritage Centre,  
Mansfield Road, Eastwood, NG16 3DZ

D.H. Lawrence Birthplace Museum,  
8a Victoria Street, Eastwood, NG16 3AW

**Tel: 01773 717 353**

[www.dhlawrenceheritage.org](http://www.dhlawrenceheritage.org)

### SPORTS CENTRES

[www.broxtowe.gov.uk/leisure](http://www.broxtowe.gov.uk/leisure)

Bramcote Leisure Centre  
**Tel: 0115 917 3000**

Chilwell Olympia Sports Centre  
**Tel: 0115 917 3333**

Eastwood Community Sports Centre  
**Tel: 0115 917 3572**

Kimberley Leisure Centre  
**Tel: 0115 917 3366**

### OTHER USEFUL SERVICES, ADDRESSES & TELEPHONE NUMBERS

Citizens Advice Broxtowe  
Council Offices  
Foster Avenue, Beeston NG9 1AB  
**Tel: 0844 499 1193**

[bureau@eastwood.cabnet.org.uk](mailto:bureau@eastwood.cabnet.org.uk)

Citizens Advice Broxtowe  
Library & Information Centre  
Wellington Place, Eastwood NG16 3BG  
**Tel: 0844 499 4194**

[bureau@eastwood.cabnet.org.uk](mailto:bureau@eastwood.cabnet.org.uk)  
[www.citizensadvice.org.uk](http://www.citizensadvice.org.uk)

Age UK **0800 169 6565**

Consumer Direct **08454 040506**

NHS Direct  
24 hour Nurse & Health Advice  
**Tel: 0845 4647**

Nottinghamshire County Council  
**Tel: 0300 500 8080**

Voluntary Action Broxtowe  
Oban House  
8 Chilwell Road  
Beeston, Nottingham NG9 1EJ  
**Tel: 0115 917 8080**

Eastwood Volunteer Bureau  
Wellington Place (rear of Library)  
Eastwood, Nottingham NG16 3BG  
**Tel: 01773 535 255**

The Helpful Bureau  
39-41 Church Street  
Stapleford, Nottingham NG9 8DB  
**Tel: 0115 949 1175**

Nottinghamshire Police  
(Non-emergencies)  
**101**

Crime Stoppers  
**0800 555 111**

Sure Start Children's Centre, Eastwood  
**0115 993 9750**

**NET Support Hotline**  
**Tel: 0115 924 2454**

### Contact your local councillor

All details available on the website at  
[www.broxtowe.gov.uk/yourcouncillor](http://www.broxtowe.gov.uk/yourcouncillor)

## Follow Broxtowe with social media

Keep up-to-date with the latest Council news, jobs and activities in your area by following Broxtowe Borough Council on your favourite social networking sites.



[www.broxtowe.gov.uk/socialmedia](http://www.broxtowe.gov.uk/socialmedia)

ہمیں اپنے کیوں کیوں کے لیے اور ان کے لیے یہ سب سے بہتر ہے کہ آپ ہمارے 0115 9177777 سے  
سویٹ ٹاکس سے)

如果您需要此等單用其他的形式或文字寫成，請電 0115 917 7777 與我們  
聯絡。

اگر آپ چاہتے ہیں کہ یہ سب سے بہتر ہے کہ آپ ہمارے 0115 9177777 سے  
سویٹ ٹاکس سے)

If you need this leaflet in other formats or  
languages contact us on 0115 917 7777

### TYPETALK - TEXT DIRECT

Typetalk's purpose is to bring the benefits of the telephone network to deaf, deafblind, deafened, hard of hearing and speech-impaired people.

Managed from a state-of-the-art centre, Typetalk's highly trained operators understand the special requirements of its customers and provide a warm, friendly service in complete confidentiality.

For Broxtowe Borough Council telephone **18001 0115 917 7777**.

Broxtowe Borough Council  
Town Hall, Foster Avenue,  
Beeston, Nottingham, NG9 1AB  
Tel: 0115 917 7777 or  
Fax: 0115 917 3030  
[www.broxtowe.gov.uk](http://www.broxtowe.gov.uk)



**Broxtowe  
Borough  
COUNCIL**

**South Nottinghamshire Community Safety Partnership**  
*Working together to make Broxtowe, Gedling and Rushcliffe safer*

0115 917 3492  
[www.sncsp.org.uk](http://www.sncsp.org.uk)

Broxtowe Borough Partnership  
Tel: 0115 917 3492  
[www.broxtowepartnership.org.uk](http://www.broxtowepartnership.org.uk)

[www.broxtowe.gov.uk](http://www.broxtowe.gov.uk)

**This document  
is available in  
large print  
upon request.**