



Broxtowe  
Borough  
COUNCIL

# Broxtowe Borough Council **Corporate Plan** **2016-2020**

*Broxtowe . . . a great place where people enjoy living, working  
and spending leisure time.*





Councillor  
Richard Jackson  
Leader of the Council



Ruth Hyde OBE  
Chief Executive

**In this plan, we set out Broxtowe Borough Council's priorities over the next four years to make Broxtowe a great place where people enjoy living, working and spending leisure time.**

**The views of our residents, elected members and Council officers have all helped shape the new, streamlined plan for 2016-20 to reflect our ambitions for the Borough.**

**Of course one of the biggest challenges will be working with continuing budget reductions and the Plan has been designed to prioritise local community needs so that we use your money on the things you think are most important.**

**Over the following pages, you can find out more about each priority, our objectives and our commitment to you in terms of our governance and accountability.**

## Contents:

	page
Our priorities 2016 - 2020	1
Developing the plan	3
The Council is changing	4
Priorities	
Housing	5
Business Growth	7
Environment	9
Health	11
Community Safety	13
Governance and checks	15



## OUR VISION

Broxtowe . . . a great place where people enjoy living, working and spending leisure time.

# our priorities 2016 - 2020



# developing the plan

A consultation of the draft priorities and objectives for the new plan took place last year both online and through Broxtowe Matters, which was delivered to every household in the Borough.

Residents broadly endorsed the key themes in the plan.

An evidence base of key data for each of the five priorities was also used to come up with the objectives.



# the council is changing

## THE COUNCIL'S OPERATING MODEL

The way the Council conducts its business is changing fast, keeping pace with the need to adapt to face the rapidly changing context in which it is operating.

Over the past few years we have evolved and now have fewer departmental divisions and continued partnership arrangements to move towards a structure which is more efficient and forward thinking.







# housing

a good quality affordable  
home for all residents of Broxtowe



One of our first targets is to increase  
house building by building 360 new  
homes each year.



1

## ➤ Increase the rate of house building on brownfield sites

### HOW?

- Working in partnership with registered providers to building housing units and actively consider setting up a housing company
- Exercise CPO powers in selected cases where permissions for housing units are not implemented within a reasonable time period
- Supporting Parish Councils to complete a full set of Neighbourhood Plans for Broxtowe, alongside completing the Broxtowe Local Plan part 2



Not enough house building - only  
4 years in the last 20 where more than  
300 homes were built



2

## ➤ Become an excellent housing provider

### HOW?

- Implement the new Housing Strategy which includes an ambition to become an excellent housing provider



Growing population - Broxtowe  
households expected to increase  
by 8.8% between 2011 and 2021



3

## ➤ Improve the quality and availability of the private sector housing stock to meet local housing need

### HOW?

- Seek to influence the quality and quantity of the private sector rented market by setting up a private lettings agency to influence the quality of the private sector rented stock
- Bringing empty properties back into use and responding to concerns about unfit private sector accommodation



Housing needs - social housing  
waiting list of over 1,400





# business growth

new and growing businesses providing more jobs for people in Broxtowe and improved town centres



We'll aim to ensure our town centre occupancy rates meet or better the national average.



1

➤ Increase the number of new businesses starting in Broxtowe

HOW?

- Implement an Economic Regeneration Strategy in order to increase the number of new businesses in Broxtowe and support existing businesses to expand.



Reduction in unemployment rates in Broxtowe

2

➤ Help our town centres to compete and attract new visitors

HOW?

- Work with local businesses to devise and deliver action plans for Beeston, Eastwood, Kimberley and Stapleford town centres.



A qualified workforce - the percentage of people with no qualifications ranges between 11.7% and 29.35%

3

➤ Complete the regeneration of Beeston town centre and seek opportunities to regenerate town centres throughout Broxtowe

HOW?

- Devise and implement a plan to redevelop the final phase of Beeston town centre and seek opportunities to redevelop other town centres across Broxtowe.



Business registration - Broxtowe has a low rate compared to the national figures.







# environment

the environment in Broxtowe will be protected and enhanced for future generations



Reduce the number of flytipping incidents by 10% each year



## 1

### Reduce litter and fly tipping to make Broxtowe cleaner

#### HOW?

- Identify and deliver new interventions to tackle and reduce fly tipping in Broxtowe

## 2

### Maintain and improve the green infrastructure of Broxtowe

#### HOW?

- Produce and begin to implement the first green infrastructure strategy to ensure built development in Broxtowe is balanced by linked green infrastructure

EVIDENCE

CO2 emissions - between 2005 and 2013 there has been a 32% decrease in CO2 emissions in Broxtowe

## 3

### Increase recycling, composting, renewables and energy efficiency projects as resources allow and reduce residual waste

#### HOW?

- Produce a new waste and recycling strategy which will set out the ways in which recycling and composting will increase in Broxtowe and residual waste will reduce, subject to resources becoming available.
- Revise our carbon management plan, setting out a new agenda for action on reducing CO2 emissions.

EVIDENCE

Recycling rates - Broxtowe's recycling rates are declining.

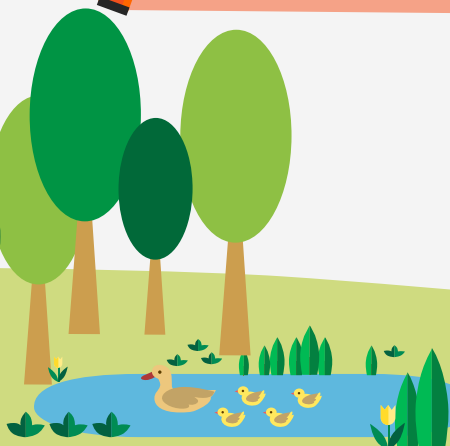
EVIDENCE

The Council has the largest area covered by local nature reserve in the county.



10

9





# health

people in Broxtowe enjoy longer active and healthy lives



## 1

### ➤ Increase the number of people who have active lifestyles

#### HOW?

- Consider whether to create a new leisure company to increase participation in active lifestyles
- Refresh our leisure facilities strategy to ensure the long term future of leisure facilities in Broxtowe.



## 2

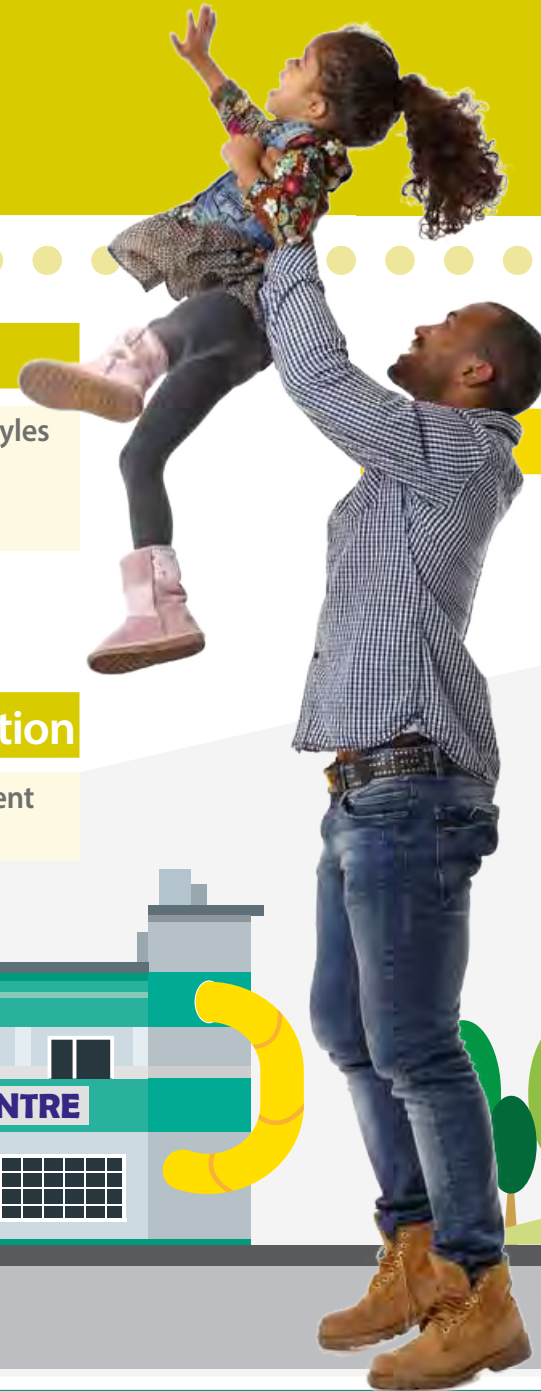
### ➤ Work with partners to improve the health of the local population

#### HOW?

- Work with partners within the local strategic partnership to attract resources and implement plans to reduce obesity, increase physical activity and reduce smoking.



We will increase our total attendance at our leisure centres and cultural sites to 1,740,000.



## 3

### ➤ Reduce alcohol related harm in Broxtowe

#### HOW?

- Work with partners within the local strategic partnership to attract resources and implement plans to reduce alcohol related harm.



Health profile - the latest profile shows that Broxtowe performs at or above the national average. Areas which are closest to being below average include excess weight in adults, recorded diabetes and hospital stays for alcohol related harm.







# community safety

Broxtowe will be a place where people feel safe and secure in their communities



## 1 Reduce the amount of anti-social behaviour in Broxtowe

**HOW?**

- Devise and implement a new corporate anti-social behaviour policy for Broxtowe



Community Safety profile - The latest profile shows that Broxtowe compares well in its most similar family group. The highest volume crimes in 2014/15 were anti-social behaviour and domestic abuse.

## 2 Reduce domestic violence in Broxtowe

**HOW?**

- Work with partners to propose successful interventions to reduce perpetration of domestic violence



We will aim to reduce the number of reported anti-social behaviour cases by 5% each year.



# governance and checks

We believe that we should be accountable for our activities and actions and a comprehensive governance system is in place to ensure that the Council is effectively regulated, conforms to good practice in its decision making and that our residents can challenge us and become engaged in democracy.

The graphic below shows you the three main ways that both our Officers and Elected members are checked and how we show our accountability to you.

You can find full details of all these checks at [www.broxtowe.gov.uk/governance](http://www.broxtowe.gov.uk/governance)

You can also read more details about how our objectives will be achieved and how we will measure progress by looking at our business plans on the Council's website.

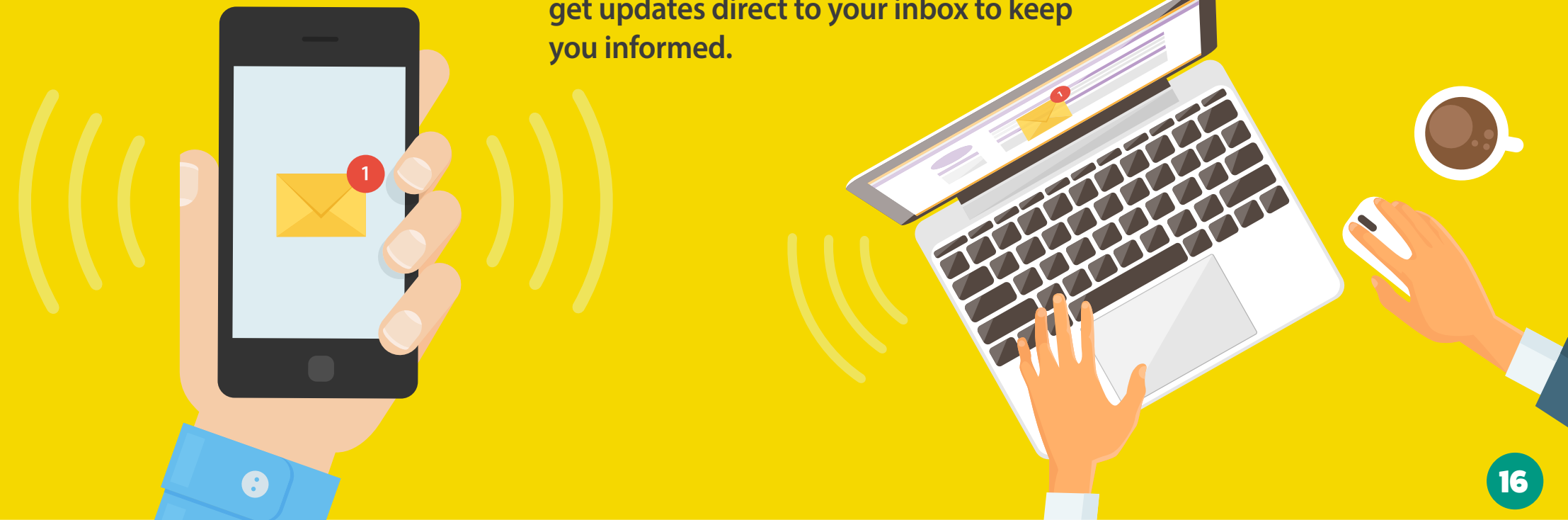


# stay up to date with

**EMAIL ME**

It's easy to keep up to date with the latest news, events and updates on our services and progress with our email me service.

Simply visit [www.broxtowe.gov.uk/emailme](http://www.broxtowe.gov.uk/emailme) and select the topics you are interested in. You will then get updates direct to your inbox to keep you informed.



This document is available in large  
print upon request

Follow Broxtowe with social media



[www.broxtowe.gov.uk/socialmedia](http://www.broxtowe.gov.uk/socialmedia)



**Broxtowe  
Borough  
COUNCIL**

**Broxtowe Borough Council**  
Council Offices, Foster Avenue,  
Beeston, Nottingham NG9 1AB  
Tel: 0115 917 7777  
email: [hpls@broxtowe.gov.uk](mailto:hpls@broxtowe.gov.uk)  
[www.broxtowe.gov.uk](http://www.broxtowe.gov.uk)

[www.broxtowe.gov.uk/corporateplan](http://www.broxtowe.gov.uk/corporateplan)

[www.broxtowe.gov.uk](http://www.broxtowe.gov.uk)