

# KING GEORGE'S PARK BRAMCOTE

**Management Plan  
2009-2013**



Produced by Broxtowe Borough Council



**Broxtowe  
Borough  
COUNCIL**

Positive People - Positive Leadership - Positive Partnerships

## **Contents**

### **Site Maps**

- 1. Location Plan**
- 2. Existing Features**
- 3. Compartment Map**
- 4. Definitive Rights of Way**
- 5. Extract from 1916 OS Map**

### **Introduction**

### **Vision Statement**

### **Policy Statement**

### **General Description**

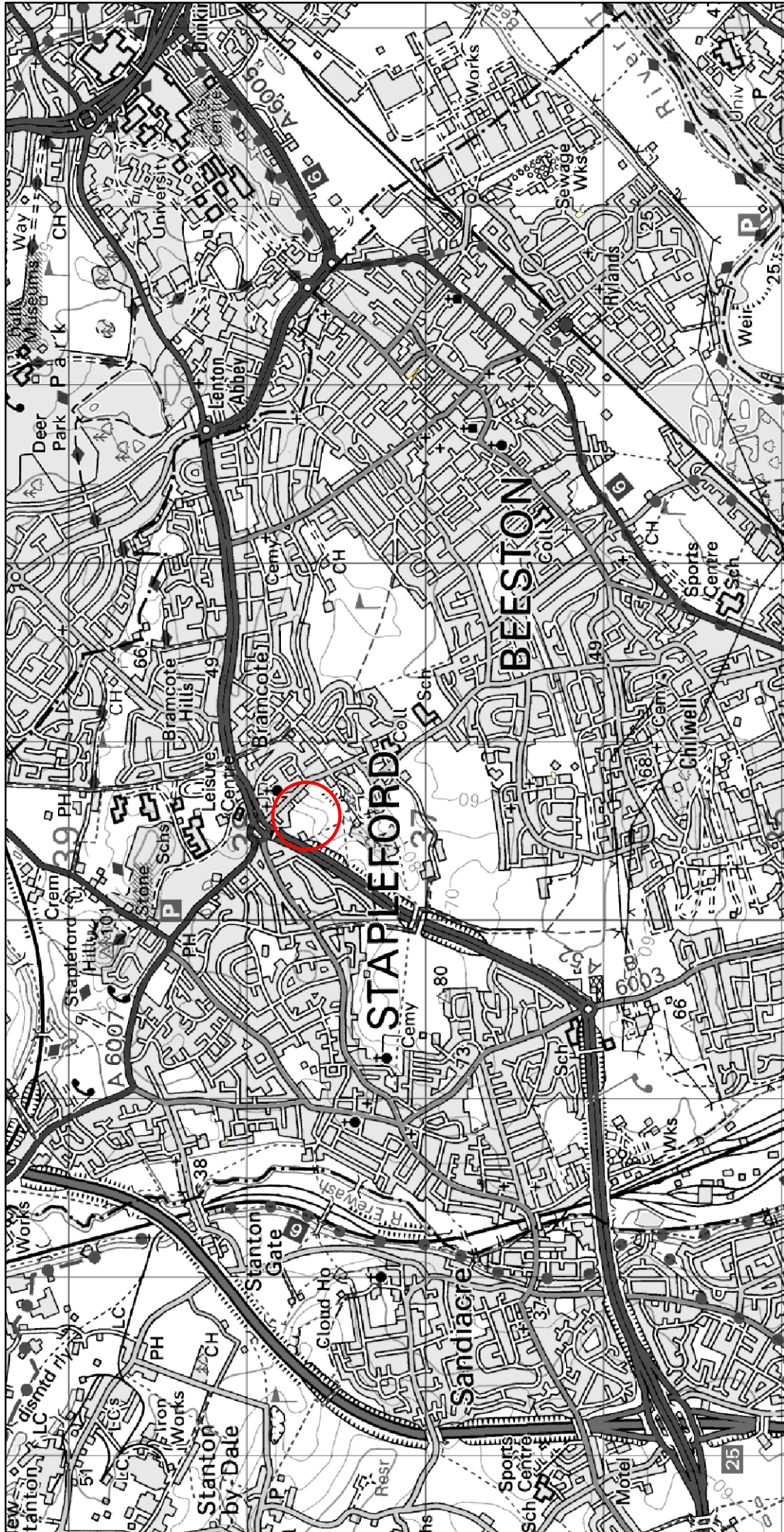
### **Land Use History** **Fields Foundation** **Fields in Trust**


### **Site Description**

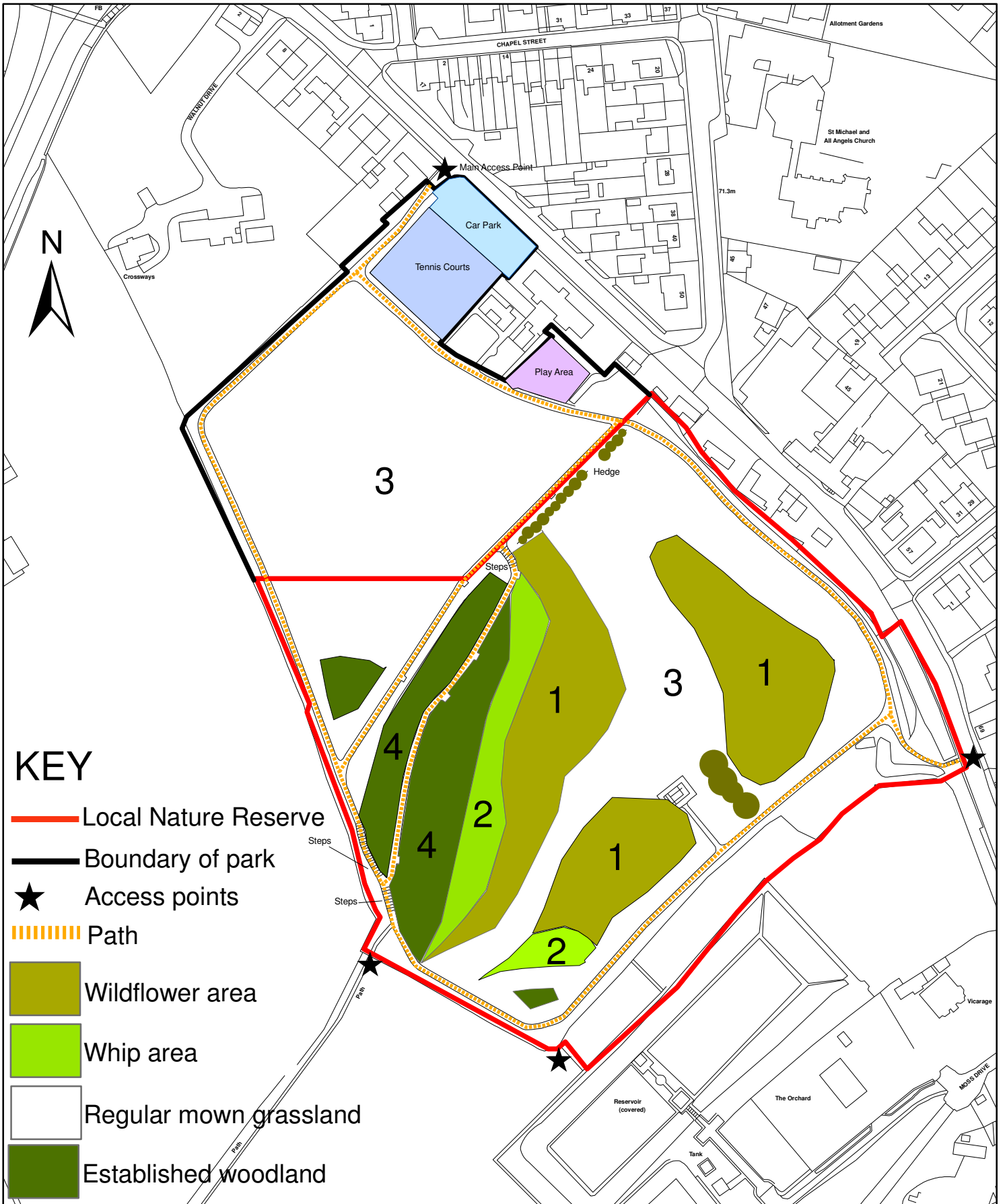
### **Evaluation of Features**

### **Funding, Monitoring and Delivery of Objectives**

### **Detailed Management Objectives**



 <p data-bbox="1356 1758 1380 2161">Positive People - Positive Leadership - Positive Partnerships</p> <p data-bbox="1412 1803 1532 2161">             Directorate of Environment              Council Offices, Foster Avenue,              Beeston, Nottingham NG9 1AB              Tel:- 0115 917 7777 Fax:- 0115 917 3600         </p>	<p data-bbox="1165 1534 1189 1624">Project</p> <p data-bbox="1181 1064 1252 1344">King George's Park Bramcote</p> <p data-bbox="1165 750 1189 862">Dwg No.</p> <p data-bbox="1228 728 1252 851">ENV/KGP/01</p> <p data-bbox="1292 1568 1316 1624">Title</p> <p data-bbox="1316 1108 1348 1310">Location Plan</p> <p data-bbox="1292 750 1316 862">Drawn by</p> <p data-bbox="1356 795 1380 851">WJA</p> <p data-bbox="1412 1556 1444 1624">Scale</p> <p data-bbox="1436 1400 1468 1534">1:30,000</p> <p data-bbox="1412 795 1444 862">Date</p> <p data-bbox="1444 772 1468 851">Mar 09</p>
<p data-bbox="1492 705 1540 1624">                 This map is based upon Ordnance Survey material with the permission of the Controller of Her Majesty's Stationery Office © Crown copyright. Unauthorised reproduction infringes Crown copyright and may lead to prosecution or civil proceedings. 100019453.2009             </p>	

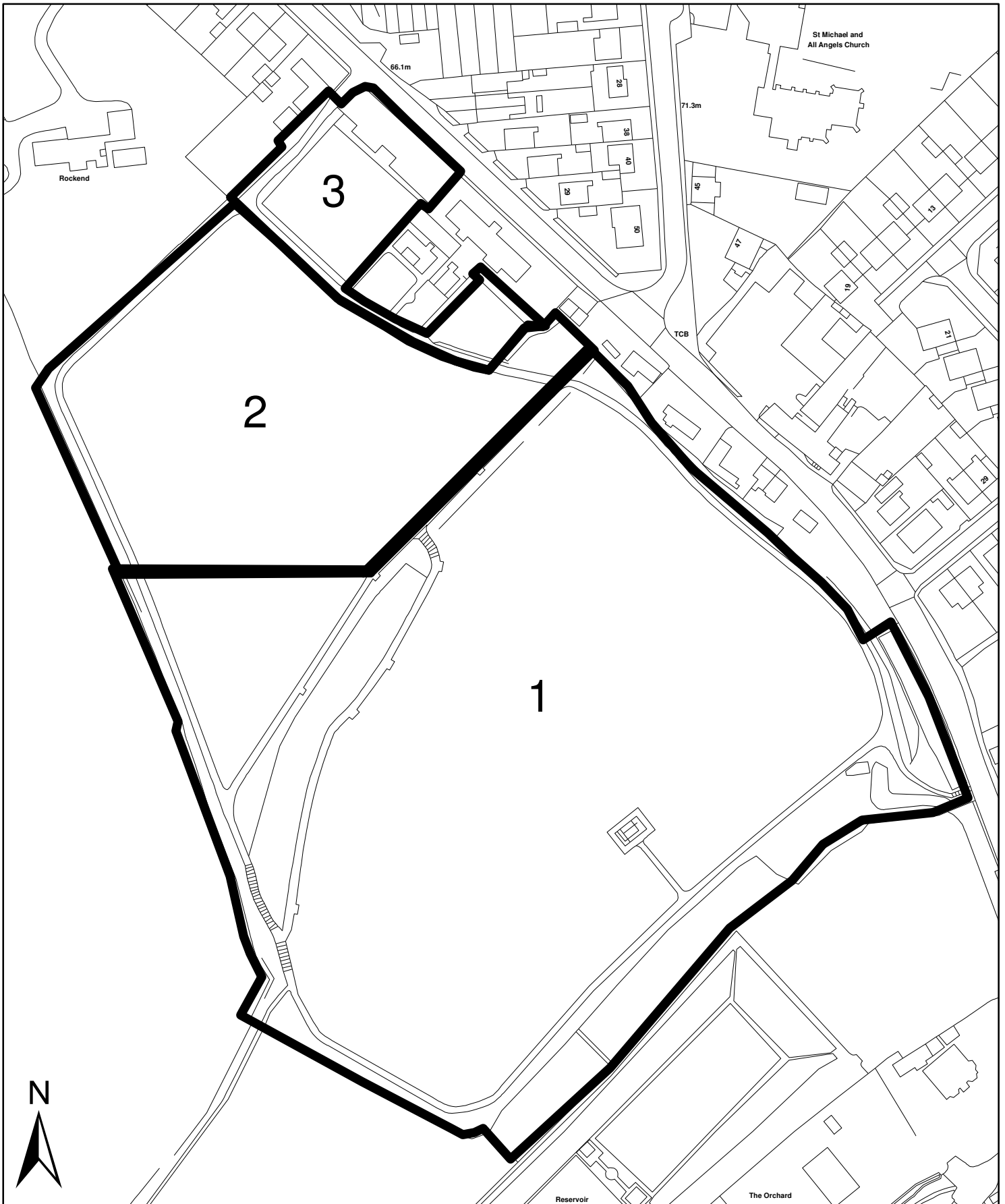


**Broxtowe  
Borough  
COUNCIL**

Positive People - Positive Leadership - Positive Partnerships

Directorate of Environment  
Council Offices, Foster Avenue,  
Beeston, Nottingham NG9 1AB  
Tel:- 0115 917 7777 Fax:- 0115 917 3600

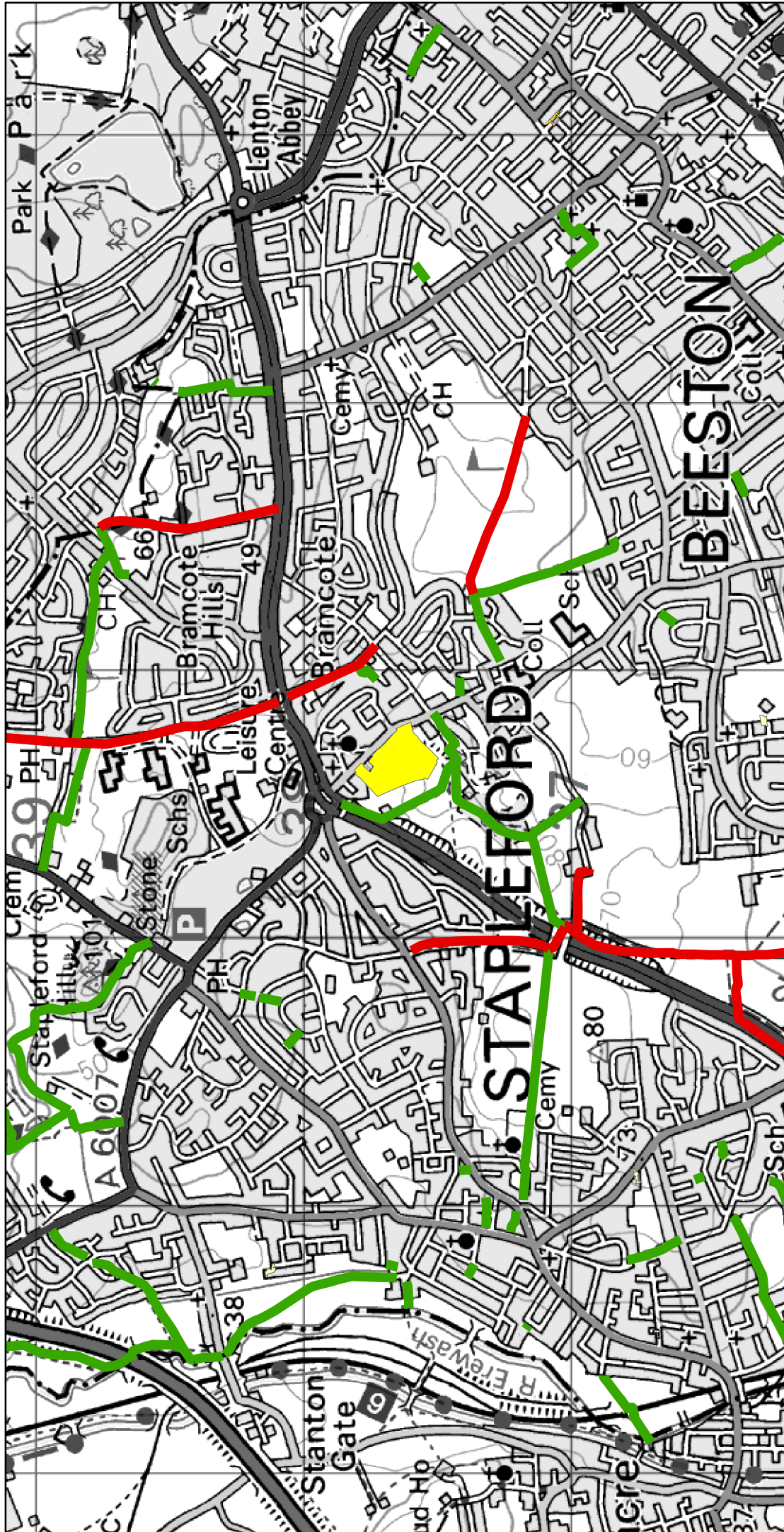
Project	King George's Park Bramcote	Dwg No.	ENV/KGP/02
Title	Existing Site Plan	Drawn by	WJA
Scale	1:1,800	Date	June 09
This map is based upon Ordnance Survey material with the permission of the Controller of Her Majesty's Stationery Office © Crown copyright. Unauthorised reproduction infringes Crown copyright and may lead to prosecution or civil proceedings. 100019453 2009			



**Broxtowe  
Borough  
COUNCIL**  
 Positive People - Positive Leadership - Positive Partnerships


Directorate of Environment  
 Council Offices, Foster Avenue,  
 Beeston, Nottingham NG9 1AB  
 Tel:- 0115 917 7777 Fax:- 0115 917 3600

Project	King George's Park Bramcote	Dwg No. ENV/KGP/03
Title	Compartment Map	Drawn by WJA
Scale	1:1,500	Date Mar 09
<small>This map is based upon Ordnance Survey material with the permission of the Controller of Her Majesty's Stationery Office © Crown copyright. Unauthorised reproduction infringes Crown copyright and may lead to prosecution or civil proceedings. 100019453 2009</small>		



**Key**  
— bridlepaths  
— footpaths

Dwg No.	ENV/KGP/04
Drawn by	WJA
Date	Mar 09
Project	King George's Park Bramcote
Title	Definitive Rights of Way
Scale	1:20,000

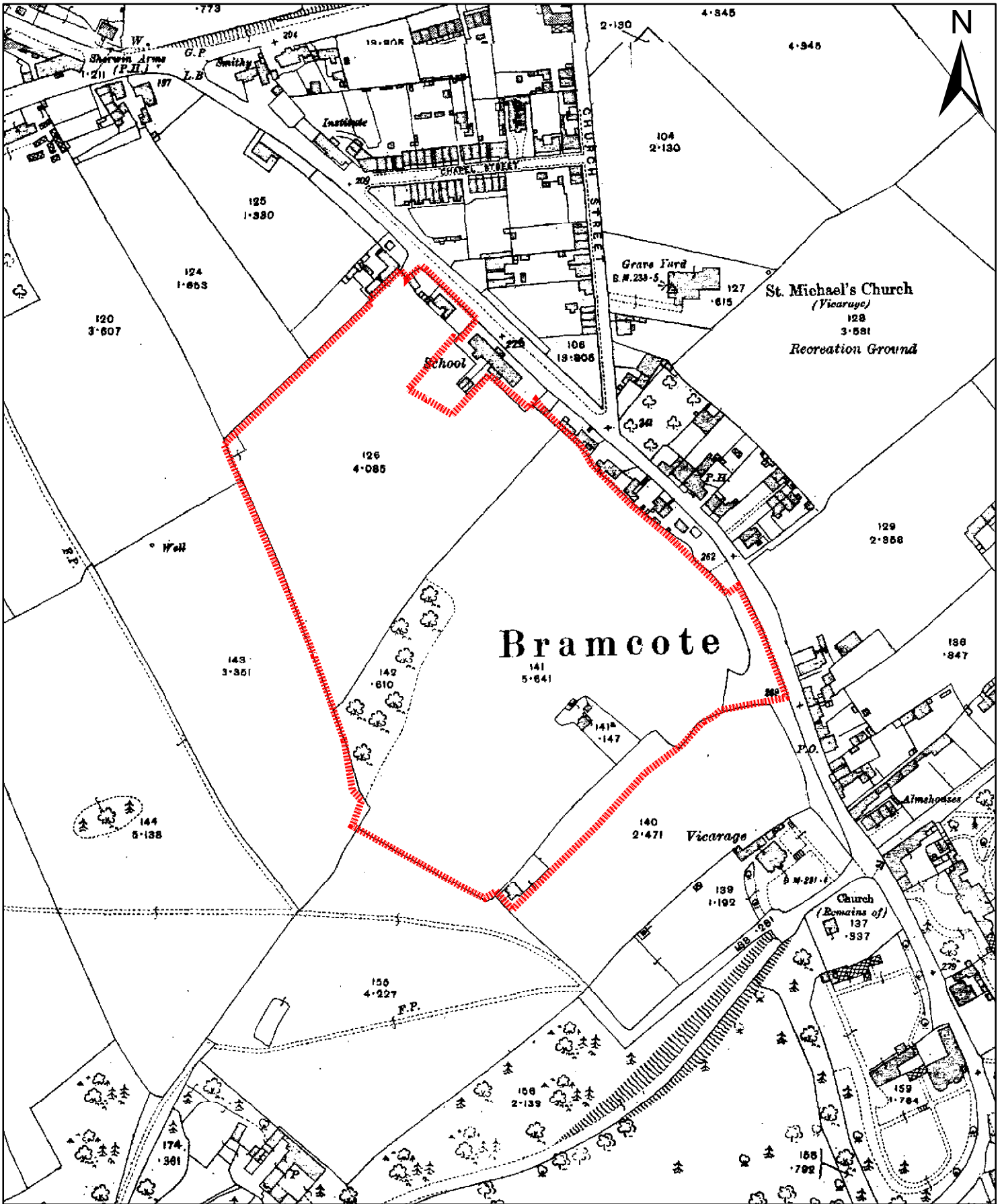


**Broxton  
Borough  
Council**

Positive People - Positive Leadership - Positive Partnerships

Directorate of Environment  
 Council Offices, Foster Avenue,  
 Beeston, Nottingham NG9 1AB  
 Tel:- 0115 917 7777 Fax:- 0115 917 3600

This map is based upon Ordnance Survey material with the permission of the Controller of Her Majesty's Stationery Office © Crown copyright. Unauthorised reproduction infringes Crown copyright and may lead to prosecution or civil proceedings. 100019453-2009




**Broxtowe  
Borough  
COUNCIL**

Positive People - Positive Leadership - Positive Partnerships

Directorate of Environment  
Council Offices, Foster Avenue,  
Beeston, Nottingham NG9 1AB  
Tel:- 0115 917 7777 Fax:- 0115 917 3600

Project	King George's Park Bramcote	Dwg No. ENV/KGP/05
Title	Extract from 1916 Ordnance Survey Map	Drawn by WJA
Scale	1:2,500	Date Mar 09
<small>This map is based upon Ordnance Survey material with the permission of the Controller of Her Majesty's Stationery Office © Crown copyright. Unauthorised reproduction infringes Crown copyright and may lead to prosecution or civil proceedings. 100019453 2009</small>		

## **INTRODUCTION**

King George's park is owned and managed by Broxtowe Borough Council and is used for a range of sports, recreation and quiet reflection. It is concealed within the middle of an urban settlement of Bramcote Village. Its steep slopes face the northwest and offer spectacular views towards the Derbyshire Peak District and on a clear day you can see three different counties. Hidden behind buildings on the urban fringe the site is a resource valued by locals, in particular dog walkers.

This plan looks at the upper part of the park which gained Local Nature Reserve status in 2008 and is primarily concerned with the care of this area. LNR status will protect the area's habitats and wildlife and increase people's awareness of their environment. Within the LNR is a designated Mature Landscape Area meriting special protection, incorporated within this is an area of Acid Grassland, which is in need of positive management to maximise biodiversity. The lower part of the site is essentially amenity grassland with hard surfaced tennis courts next to a car park which is the main access point into the park.

Although this plan is primarily concerned with the Mature Landscaped area, it offers an opportunity to look at the park holistically and to provide a balanced way forward to make the most of the many features which make this site a very interesting local amenity and the implementation of this management plan will encourage greater species and habitat diversity which is set out in the Borough's Nature Conservation Strategy.

The site is inextricably linked with the village of Bramcote and it is hoped that this plan will help promote local ownership in bringing interested partners together through a local Friends of Group as well as maximising the value of the site as a haven for wildlife, a sports and recreational facility and an area of quiet reflection.



## **VISION STATEMENT**

The vision is “to conserve and enhance the value of the park to benefit people and wildlife”.

An essential factor for this site is to engage local interest in developing ownership and managing the conflict which can occur between the wildlife interest and the amenity usage.

The aim is to significantly enhance the biodiversity and community resources throughout the park and develop a vibrant, well used park facility.

## **POLICY STATEMENT**

The Council has a Corporate Plan for 2008-2012 consisting of five key priorities with corresponding objectives and targeted outcomes. The most relevant to this plan is:

Priority:

Green Issues – Objective G4 which is to “take responsibility to protect the environment for future generations” so as we can “protect valued environment and also create new habitats”.

Targeted Outcomes:

- Maximise the nature conservation value of parks and open spaces.
- Review and roll forward our approach to local biodiversity.
- Develop a woodland strategy.
- Develop ‘Pocket Parks’ within the communities.

## **GENERAL DESCRIPTION**

King George's park, Bramcote is situated within the Bramcote Village Conservation Area in the south west region within the Borough of Broxtowe in Nottinghamshire (grid ref. SK 4507 3377).

The park is made up of three specific compartments each offering an eclectic mix of diversity measuring about 3.2 hectares of park and mature landscape. This plan relates primarily to the upper compartment (Compartment 1) which was designated as a Local Nature Reserve in 2008. Within this compartment is a designated mature landscape and prominent area for special protection which is mentioned in the Borough's Local Plan.

Strategically positioned in the heart of Bramcote, this park offers a very interesting local amenity. Facilities include play area, tennis courts, along with areas of amenity acid grassland, established woodland and mature specimen trees, along with a mature landscape area.

Broxtowe Borough Council is sole owner of the park which is bound to the north by private houses/gardens, to the south by private land which contains a reservoir. On the east side it is bound by, again, private property and also a children's nursery, to the west is farmland.

There are four access points to the park. The main entrance to the park and the most accessible for majority of users is a gated entrance which is adjacent to the car park on Town Street. The three remaining entrances are less accessible and not suited for those with limited mobility.

The mature woodland area is designated a Mature Landscape Area meriting special protection. There are also areas of established woodland and mature specimen trees, whip areas, wildflower areas and Amenity Grassland.

The local community are the main users of this park. It has good links with the local rights of way network, good surfaced paths providing links to the countryside which include Bramcote with Stapleford/Chilwell and Beeston. Strategically situated on the urban fringe of the Borough the park provides habitats for wildlife and various flora and fauna.

## LAND USE HISTORY

The 1916 Ordnance Survey map shows the area surrounding the park to be less densely populated than at present. The landscape at this time appears to be mostly agricultural along with some parkland. The map shows an area of woodland which now makes up the area of Mature Woodland that still exists within the park.

On 30 January 1936 upon the death of His Majesty King George V a foundation was formed and was named “King George’s Fields”. The aim of this foundation was to “promote and to assist in the establishment of playing fields for the use of and enjoyment of the people”, every playing field to be styled ‘King George’s Field’ and to be distinguished at each entrance by displaying the Heraldic Panels.

This foundation, in order to avoid duplication, consulted “Fields in Trust” (FIT), formerly the National Playing Fields Association (NPFA) which was the recognised authority on all playing fields of which ‘Town Street’ recreation ground was previously named.



**HISTORY OF THE KING GEORGE'S FIELDS FOUNDATION**



*For England, Wales and Northern Ireland*



*For Scotland*

*KING GEORGE'S FIELDS FOUNDATION*

COUNTY	<i>Local Body</i>	<i>Acreage</i>	<i>Capital Cost</i>	<i>Grant allocated</i>
<b>LONDON (continued)</b>				
City of London (Vine St.)	City Council	0.16	£ 10,000	£ 10,000
Little Eltham	G.L.C.	4.94	3,520	1,000
Islington (Arundel Square)	Borough Council	1.25	10,498	1,670
Islington (Market Road)	Borough Council	2.7	10,804	1,600
Stepney	G.L.C.	65	1,000,000	75,000
Stepney (Tredegar Square Gardens)	Borough Council	0.31	1,047	830
<b>MIDDLESEX</b>				
Ealing (Poor's Piece)	Borough Council	1.25	2,500	300
Edmonton (Bush Hill Park)	Borough Council	9	21,420	2,000
Enfield	Borough Council	128.5	129,577	3,500
Enfield (Albany Park)	Borough Council	4.75	13,824	1,100
Enfield (Aldersbrook Avenue)	Borough Council	2	6,681	1,000
Hanworth (Rectory Meadow)	Borough Council	14.75	24,200	3,500
Southall (Durdans Park)	Borough Council	29.5	29,036	3,500
Tottenham	Borough Council	17.99	36,525	2,000
Uxbridge (Ickenham)	Borough Council	1	525	250
<b>NORFOLK</b>				
Drayton	Parish Council	3	1,479	275
Holt	N.P.F.A.	1	215	100
Shouldham	Parish Council	8	375	150
Rollesby	Parish Council	2	403	200
Caister-on-Sea	Parish Council	7.69	2,458	1,000
<b>NORTHAMPTONSHIRE</b>				
Burton Latimer	U.D.C.	5	2,434	600
Holcot	Parish Council	0.75	320	175
Yelvertoft	Parish Council	2.5	60	100
<b>NORTHUMBERLAND</b>				
Longframlington	Parish Council	4.5	1,000	300
Newburn (Bell's Close)	U.D.C.	1.25	963	450
Newcastle-upon-Tyne (Two Ball Lonnen)	City Council	11.9	12,677	2,000
<b>NOTTINGHAMSHIRE</b>				
Arnold	U.D.C.	5.50	10,000	1,000
Beeston (Bramcote)	U.D.C.	11	3,060	750
Besthorpe	Trustees	1.94	328	150
Carlton-in-Linrick	Parish Council	3	80	50
East Retford	Borough Council	6.19	4,015	500

## **SITE DESCRIPTION**

The site is made up of three compartments A, B and C. See map ENV/KGP/03.

### **Compartment A**

This compartment is made up of the Local Nature Reserve. On the north eastern boundary are private gardens which front Town Street. A stepped entrance from Town Street allows you to enter the park in the south eastern corner. Private land runs along this south eastern boundary which contains a disused reservoir. To the west is private farmland which is used for grazing pastures which, at present, contain horses, there are two access points from footpaths which link to the local definitive footpath network linking Stapleford through to Chilwell. The northern boundary is adjacent to Compartment B which is Public Open Space.

Within this compartment there are four specific areas which are shown on map ENV/KGP/02.

Area one denotes the wildflower areas which were defined in spring 2007 as unimproved acid grassland. Acid grassland is a habitat of conservation concern in Nottinghamshire and also identified in the Nature Conservation Strategy for the Borough. The Nottinghamshire Wildlife Trust, in partnership with Local Authorities, has developed "The Blue Butterfly Scheme"; this area of acid grassland is within this scheme. Acid grasslands characterise the nutrient deficient, low PH, well drained soils derived from the Sherwood Sandstones found locally in the east and south of the County. Characteristic species are common bent, sheep's fescue and wavy hair grass with a range of herbs including tormentil, sheep's sorrel, harebell and heath bedstraw.

Area Two is made up of whips that were planted in the winter of 2005 and 2006 consisting of a wide variety of mixed natives and scrub/shrub species bordering the grassland. The central areas are predominately made up of oak, birch and chestnut. The periphery is made of scrub which consists of gorse, buckthorn and hawthorn.

Regular mown grassland makes up Area Three. Paths have been created through the wildflower areas which are mown on a regular basis. A two metre wide strip is also mown along the tarmac perimeter, path clippings are not collected.

Area Four denotes established woodland and mature specimen trees. These are predominately oak with sweet chestnut and wild cherry.

### **Compartment B**

This compartment is Public Open Space which is essentially amenity grassland and forms the lower level of the park. Bounded by private land to the northeast and west, the eastern perimeter is made up of compartment C.

### **Compartment C**

Compartment C is made up of a car park, adjacent to this is the park entrance gate accessible to people with disabilities. Next to the car park are two tennis courts for public use. A little further into the park you will see a children's play area with modern play equipment.

## **EVALUATION OF FEATURES**

Compartment A has recently been designated as a Local Nature Reserve within the Borough of Broxtowe. This whole area has had a good maintenance regime and no major changes are needed. Some minor objectives have been added to the new management plan and will only enhance the biodiversity and enrichment of this compartment. Because the park is sited on a steep slope, the three access points all have limited access, one from steep steps from Town Street and the other two are from farmland through stiles. These could be reviewed and consideration given for changes to meet the Disability Discrimination Act.

The wildflower meadow needs to be managed sympathetically with an appropriate mowing regime so as the area can be composed of a diverse range of attractive wildflowers that supports a wealth of wildlife, especially insects such as butterflies.

The whip area was planted in the winter of 2005/2006, establishment of the native trees and shrubs has been good. The ongoing maintenance needs to be limited and the possibility of occasional irrigation if drought conditions arise. Possible selective thinning will be required as trees mature.

Paths have been created through the wildflower areas which need to be mown fortnightly through the growing season. A 2m strip also needs to be mown along the tarmac edge and clippings not collected.

Within the established woodland, maintenance is generally to be none invasive other than clearing wind damage and making safe.

Litter picking and path sweeping should be carried out 4 or 5 times per year and a small section of hedge should be flail cut in late summer.

A possible spring survey of the ground flora would help in guiding the way forward.

There is also a need to continue in working with owners of gardens adjacent to this area to ensure they are aware of the wildlife value of the site on their doorstep.

Compartments B and C are outside the Local Nature Reserve and are primarily for amenity usage. There are opportunities to enhance the grassland and management of the trees by coppicing and thinning.

Litter and graffiti issues need to be addressed around the tennis court area along with a need to sweep regularly.

The recently planted beds along the side of the new car park need to have weed control and pruning.

The children's play area needs regular maintenance on the play equipment to provide a safe environment for the users. The bark surface needs to be topped up annually.



## **FUNDING, MONITORING AND DELIVERY OF OBJECTIVES**

### **Funding**

Most of the objectives can already be achieved through existing arrangements through the Broxtowe Borough Council revenue. The impact of a Friends of Group would also benefit the park, so therefore at this moment in time no additional funding is needed. Further capital improvement works to the park would, however, require additional funding.

### **Monitoring**

Broxtowe Borough Council officers assisted by Nottinghamshire Wildlife Trust will complete a short report each year identifying how the biodiversity has developed, and showing which objectives have been delivered.

## DETAILED MANAGEMENT OBJECTIVES

- Local obligations: Work likely to cause disturbance to breeding birds, ie. felling and scrub clearance cannot be undertaken during the bird breeding season (March to September). Therefore, all felling and scrub clearance must be undertaken during the autumn and winter as it is an offence to disturb any wild bird (with the exception of pest species) while it is tending a nest containing eggs or chicks, until the chicks have successfully fledged. To do so would be a criminal offence under The Wildlife and Countryside Act 1981.
- Protected species: Mature trees identified for felling, likely to provide roosting opportunities for bats should be surveyed by a licensed bat worker prior to felling. All species of British bat plus their roosting sites are protected by The Wildlife and Countryside Act 1981, the CROW Act 2000 and the Conservation (Natural Habitats etc) Regulations 1994.

### General

Task/Operation	Partners						Estimated Cost	Resourced From	Comments
		09/10	10/11	11/12	12/13	13/14			
Undertake bat survey	BBC/NWT	√	√		√		-	Local bat group	
Health and safety assessment of trees and associated works	BBC	√	√	√	√	√	Within existing resources	BBC revenue	
Site interpretation and signage leaflet. Promote. Parish Map/Village History	BBC		√				£3,000	BBC/Groundwork	
Assess need and provide dog bins and seek to educate local dog owners	BBC	√					Within existing resources	BBC revenue	
Erect bat and bird boxes	BBC/Ground-Work/NWT/School	√	√		√	√	£100 pa 1 task day	BBC revenue BTCV budget	
Undertake access survey and develop proposals	BBC/NCC	√					Within existing resources	BBC/NCC Officer times	
Deliver access improvements	BBC/NCC	√	√	√	√	√	2 task days pa	BTCV budget	
Work to develop local 'Friends of' Group	BBC/NWT	√	√	√			Within existing resources	BBC Officer times	

Task Operation	Partners						Estimate Cost	Resourced From	Comments
		9/10	10/11	11/12	12/13	13/14			
Annual monitoring of woodland development including production & updating of species list	BBC/NWT/ Friends of Group	√	√	√	√	√	£200 pa	BBC revenue NWT service level agreement	
Engage local schools & church groups in community partnerships	BBC/Local History Society/F of Group		√		√			BBC revenue	
Litter control bins	BBC	√	√	√	√	√		BBC revenue	
Dog bins	BBC	√	√	√	√	√		BBC revenue	
Possible links with Habitat Management at Bramcote Hills Park Woodland	BBC	√	√	√	√	√		BTCV Partnership	

### **All Compartments**

Sweeping up of leaves to car park/tennis courts, access road, all paths.	BBC	√	√	√	√	√	Within existing resources	BBC revenue	4 times yearly
Path surface repairs	BBC	√	√	√	√	√	Within existing resources	BBC revenue	
Hedge cutting	BBC	√	√	√	√	√	Within existing resources	BBC revenue	2 x a year
Weed control	BBC	√	√	√	√	√	Within existing resources	BBC revenue	
Hedge flailing	BBC	√	√	√	√	√	Within existing resources	BBC revenue	Late summer

**Compartment A**

Task Operation	Partners						Estimate Cost	Resourced From	Comments
		9/10	10/11	11/12	12/13	13/14			
Woodland plantations. Remove dead trees, tree stakes and ties on recently planted trees	BTCV/BBC	√	√		√		Within existing resources	BBC revenue	
Wildflower areas. One annual cut and collection of arisings where appropriate in autumn	BBC	√	√	√	√	√	Within existing resources	BBC revenue	Avoid cutting until early May
Whip areas – central – selective thinning to oak, birch and chestnut	BBC	√	√	√	√	√	Within existing resources	BBC revenue	
Whip areas – periphery – selective thinning to gorse, buckthorn and hawthorn	BBC	√	√	√	√	√	Within existing resources	BBC revenue	
Mown grassland. Maintain mown path fortnightly through growing season. 2m strip mown along tarmac path. Clippings not collected	BBC	√	√	√	√	√	Within existing resources	BBC revenue	
Maintain vantage point at top of site	BBC	√	√	√	√	√	Within existing resources	BBC revenue	
Coppice smaller trees to enhance insect populations	BBC	√	√	√	√	√	Within existing resources	BBC revenue	
Flail cut all hedges	BBC						Within existing resources		

### **Compartment B**

Task Operation	Partners						Estimate Cost	Resourced From	Comments
		9/10	10/11	11/12	12/13	13/14			
Grass cutting. Amenity grassland	BBC	√	√	√	√	√	Within existing resources	BBC revenue	
Maintain trees by coppicing/thinning	BBC	√		√	√		Within existing resources	BBC revenue	

### **Compartment C**

Remove graffiti on tennis court walls	BBC	√	√	√	√	√	Within existing resources	BBC revenue	
Sweep areas – car park/access road/boundary fences of tennis courts	BBC	√	√	√	√	√	Within existing resources	BBC revenue	
Shrub beds – weed control/trim back	BBC	√	√	√	√	√	Within existing resources	BBC revenue	
Play area inspected twice weekly	BBC	√	√	√	√	√	Within existing resources	BBC revenue	
Maintain equipment & surfacing to relevant safety standards	BBC	√	√	√	√	√	Within existing resources	BBC revenue	