

Broxtowe Country Trail

with associated walking
and cycling routes



Broxtowe Country Trail

www.broxtowecountrytrail.co.uk



The Broxtowe Country Trail is a long distance walking and cycling route which roughly follows the boundary between Nottingham City and the Borough of Broxtowe. The route follows bridleways, quiet roads and some sections of busy road connecting the Trent Valley with Sherwood Forest and the Peak District.



Acknowledgements

This project was conceived and developed through a partnership led by:

Broxtowe Borough Council,
Nottingham City Council and
Nottinghamshire County Council.

The core partners wish to record their thanks to the following partners for their valuable support in delivering this project.



Nottinghamshire
Wildlife Trust



Introduction and Guidance


Summary of the route

The trail starts alongside the River Trent near the award winning Attenborough Nature Centre and at Beeston Marina follows the road system to Nottingham University and Wollaton Park and Museum. Returning to the road it follows the disused Nottingham Canal, now a Local Nature Reserve, before joining with the bridleway system of Strelley with its open countryside and spectacular views. Passing close to the Monks Way in Strelley the route passes through Kimberley with its brewing and railway heritage towards the thriving town of Bulwell. Onwards then to Bulwell Hall Park and Hucknall with its Rolls Royce connections towards Greasley passing close to the ruin of Beauvale Priory then alongside Moorgreen Reservoir towards Underwood. From there it passes through the pretty village of Bagthorpe, well served with a range of pubs, towards Brinsley and crossing the Erewash Valley by Nottinghamshire Wildlife Trust nature reserve at Aldercar Flash. The Trail then reconnects to the northern end of the Erewash Valley Trail at the canal basin at Langley Mill.

Points of interest

The trail takes in a vast range of wildlife, heritage and tourism features. Major features include the DH Lawrence Heritage Centre in Eastwood, Wollaton Hall, Attenborough Nature Centre and the many attractions associated with Nottingham City Centre.

Safety warnings

Cyclists please be aware that the trail follows some very busy on road routes denoted by  on the map. Full purple sections are quieter or are dedicated cycle -tracks. Please be very wary at road crossings and junctions. Cyclists should dismount if necessary. All cyclists should consider using helmets and hi visibility clothing.

Most of the route is reasonably level with few steep inclines. It is suitable for disabled access for much of its length although some sections have kissing gates and other features which would make use of a mobility scooter difficult or impossible. Please contact 0115 917 7777 or 0115 915 5555 if you need advice when planning your route.

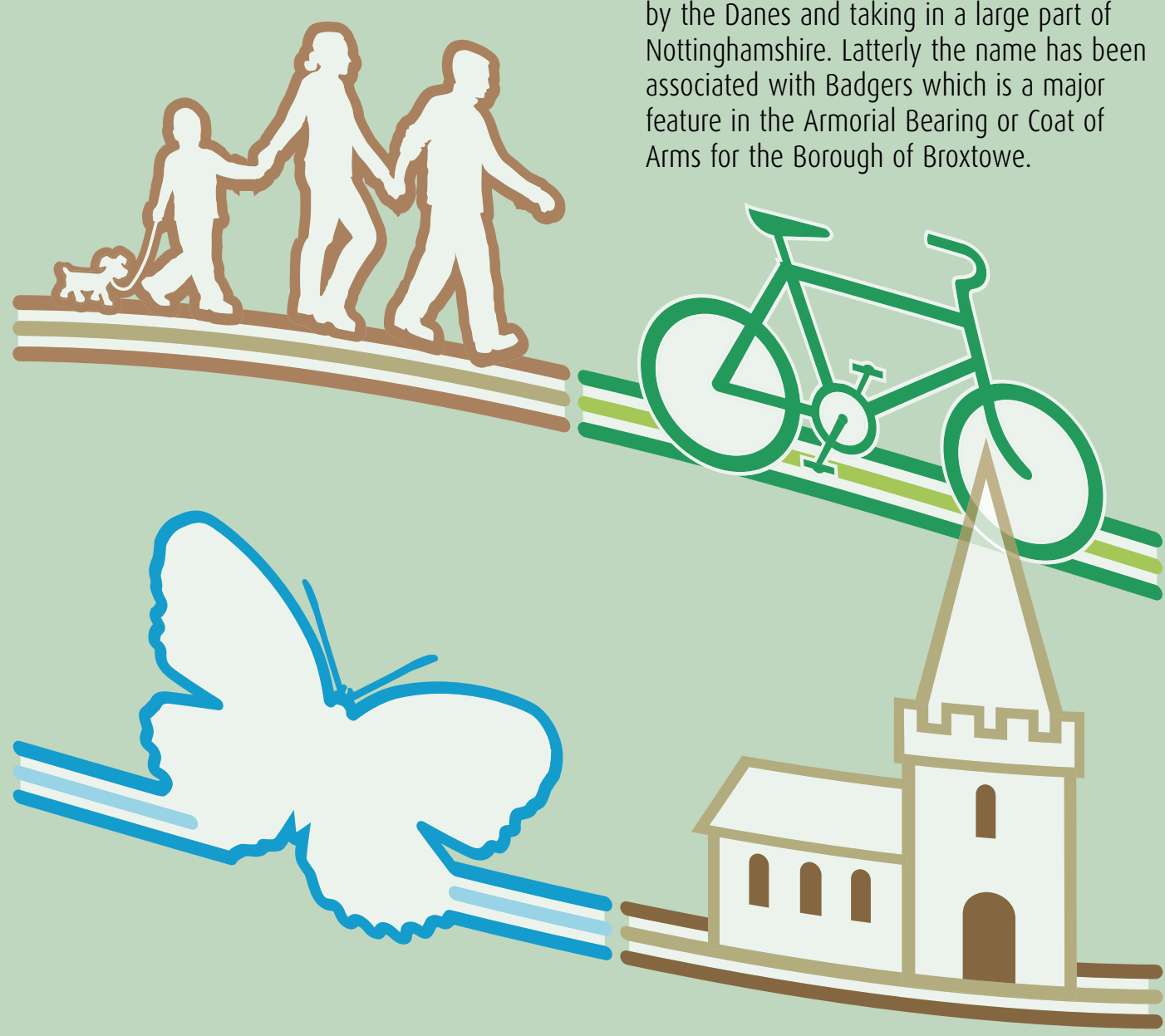
Broxtowe and Broxtowe!!

There is often some confusion over the name Broxtowe which applies to two distinctly separate areas which are close to each other:-

One is the Borough of Broxtowe which is a district council formed in 1974, the boundary of which is shown by a light green area on the large map.

The other is a ward of Nottingham City shown as a orange area on the large map.

It is not clear how the word Broxtowe was created although “stowe” means dwelling place and Broxtowe was historically an administrative area or Wapentake created by the Danes and taking in a large part of Nottinghamshire. Latterly the name has been associated with Badgers which is a major feature in the Armorial Bearing or Coat of Arms for the Borough of Broxtowe.



The Bigger and Smaller picture

BIGGER

The trail is about 27 miles and connects with the Erewash Valley Trail at its southern and northern ends offering the chance to circumnavigate the Borough of Broxtowe, some 41 miles.

The trail links with many existing well known trails including
Trent Valley Way (and Derbyshire's Trent Valley Greenway)
Ashfield's Hidden Valleys
River Leen Corridor
The Big Track
Erewash Valley Trail
Nutbrook Trail
Robin Hood Way
The Monks Way - Ilkeston to Strelley
The National Sustrans network also connects with the trail providing long distance connections across the country.

Please see the Broxtowe Cycling Map leaflet for an overview of cycling in the Borough.

SMALLER

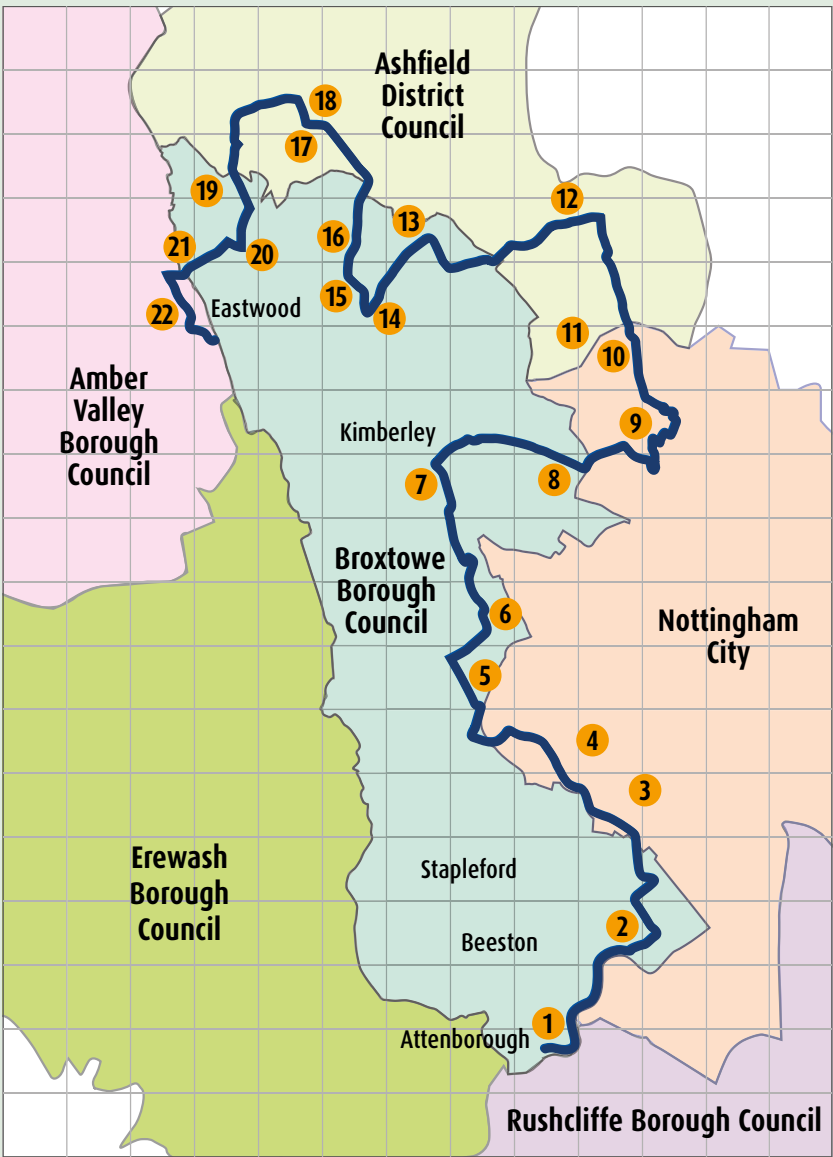
There are many links highlighted on the map which provide opportunities to explore local circular loops or tackle the whole trail in small sections.



Summary of the route from South to North

The route takes in the following locations:

- 1 Attenborough and River Trent
- 2 Beeston Lock and Lock Cottages
- 3 Nottingham University
- 4 Wollaton Park and Village
- 5 Trowell Moor
- 6 Strelley Village
- 7 Swingate and Kimberley
- 8 Low Wood
- 9 Bulwell
- 10 Bulwell Hall Park
- 11 Hucknall Airfield
- 12 Hucknall
- 13 Beauvale Priory
- 14 Moorgreen
- 15 Colliers Wood
- 16 Moorgreen Reservoir
- 17 Underwood
- 18 Bagthorpe Village
- 19 Brinsley
- 20 Brinsley Headstocks
- 21 Aldercar Flash
- 22 Langley Mill



Enjoying our wildlife

The trail holds a rich variety of wildlife so keep your eyes open for a stunning mix of flora and fauna. You will see wetland birds including grebes and herons at Attenborough, Wollaton Park and Moorgreen. Look out for farmland finches and buzzards at Trowell. You may get a glimpse of a kingfisher or watervole or if you are lucky even a rarity such as otter, barn owl or bittern.



Gypsywort - Photographer: Stig Madsen



Common Blue - Photographer: Paul Shaw



Mute Swan - Photographer: Paul Shaw



Jay - Photographer: Sean Browne



Otter - Photographer: Darin Smith



The Broxtowe Country Trail passes through a diverse range of urban and rural environments and the geology defines the landscape and vegetation. The northern section lies on Sherwood sandstone and this is particularly evident around Bulwell, where gorse and acid grassland can be found. The trail also crosses into the Nottinghamshire and Derbyshire Coalfields and the Magnesian Limestone Ridge, a rock outcrop which runs from Nottinghamshire to County Durham which supports rare grassland species.

A diverse range of lowland habitats can be found along the trail. This includes rivers, streams, canals and associated wetland habitats such as reedbed, swamp, floodplain grassland. Key habitats of arable and grazed farmland include fragments of agriculturally unimproved neutral and calcareous grasslands and ancient hedgerows and woodland. Parkland features too and includes sites such as Bulwell Hall Park and the historic deer park at Wollaton. Former industrial environments present include a former colliery site at Colliers Wood, Moorgreen (now restored to grassland, ponds and woodland) and Moorgreen Reservoir, which was built

as a feeder water for the Nottingham Canal. Such sites provide significant opportunities for wildlife and recreation. The wetland sites in the vicinity of the trail are of particular importance. Species associated with the Rivers Leen, Trent and Erewash include white-clawed crayfish, otters, water voles and a variety of wading and wetland bird species, such as lapwing and even bittern.

Running through urban Nottingham and adjacent to the tram network, the River Leen is just as important for people as it is for biodiversity. The paths and adjacent formal and informal parks, many of which have been enhanced in recent years through various projects, provide quiet refuges for wildlife and recreation.

Attenborough Nature Reserve lies adjacent to the River Trent and at the mouth of the River Erewash.

This Nottinghamshire Wildlife Trust reserve is a complex of flooded former gravel pits and islands. It provides 145 hectares of habitat for a wide range of plants, birds and other wildlife and boasts an award winning visitor centre.

Local attractions near the route

The trail lies close to a range of attractions with the southern end connected to riverside features such as Trent Lock, Attenborough Nature Centre, Beeston Lock and waterfront, Trent Embankment, Nottingham's canal waterfront. Nottingham City Centre offers attractions such as Nottingham Castle, Caves, ancient pubs and of course theatres, restaurants and shopping.

Moving north the trail passes close to the busy town centre of Beeston and Nottingham University with its Arts centre, Archaeological museum, Tennis centre and the attractive Highfields Park where visitors can enjoy a spot of boating in the summer months.

Nottingham University has extensive grounds and gardens and next to this we have the impressive Elizabethan Mansion, Wollaton Hall with its museums, lake and deer park. The delightful Wollaton village boasts an ancient church the old village pump forming a pretty centrepiece.

Further north the route touches on the disused Nottingham Canal which is now a Nature Reserve and as the trail heads towards historic Strelley it offers spectacular views of the Erewash Valley.

Kimberley has a rich history with railway and brewing connections and a link westwards from the town connects to the Erewash Valley Trail offering impressive views of the Bennerley Viaduct, a grade 2 listed railway structure and one of only two of its type

in the country. It was built using similar technology to the Eiffel Tower in Paris.

As the route passes towards Bulwell Hall Park it passes very close to Hucknall Airfield with its military connections and long time testing ground for Rolls Royce aero engines.

Crossing the M1 westwards the trail passes close to the ruins of Beauvale Priory before turning alongside the Moorgreen Reservoir. We are now in the author, D H Lawrence's country and his Birthplace Museum and the D H Lawrence Heritage Centre can be found in the heart of the interesting town of Eastwood.

The broadleaved woodland on the banks of the Moorgreen Reservoir hold rich birdlife and at the northern end there are connections to Ashfields Hidden Valleys with its gems such as Papplewick and Newstead. Bagthorpe Village sits pleasantly in the landscape with several pubs offering the chance for a break



Attenborough Nature Reserve



Moorgreen Reservoir



Beeston Lock



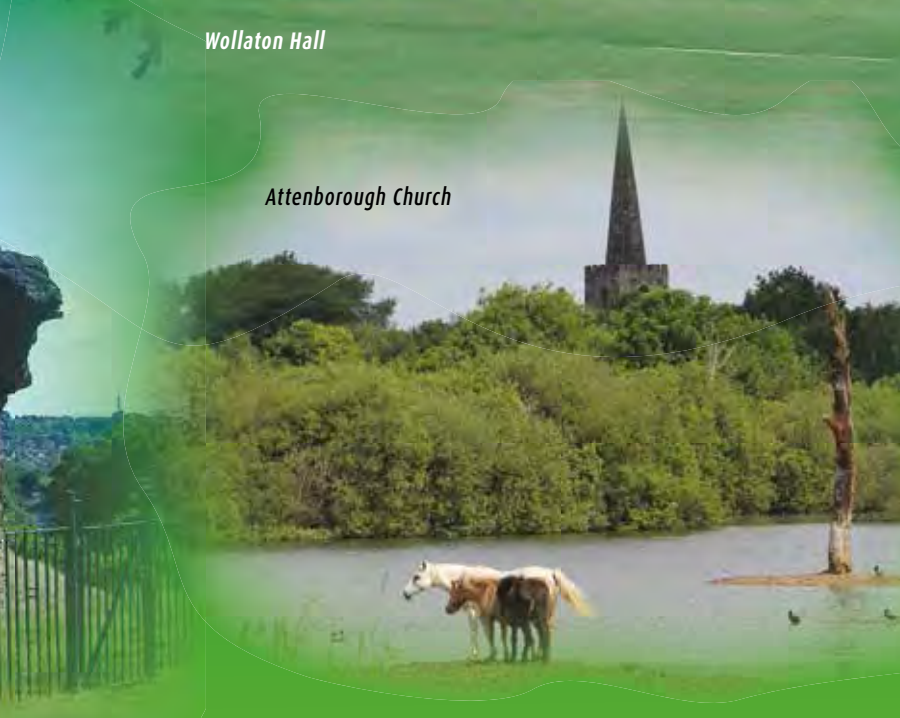
Beauvale Priory



The Hemlock Stone



Wollaton Hall



Attenborough Church



Bennerley Viaduct



Strelley Village



Kimberley



Langley Mill Basin

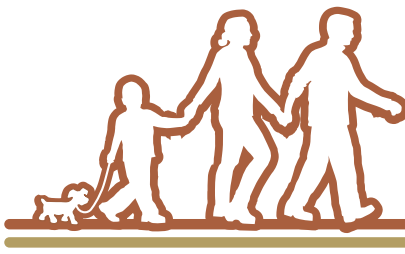
Enjoy the Broxtowe Country Trail!



Broxtowe Country Trail
www.broxtowecountrytrail.co.uk

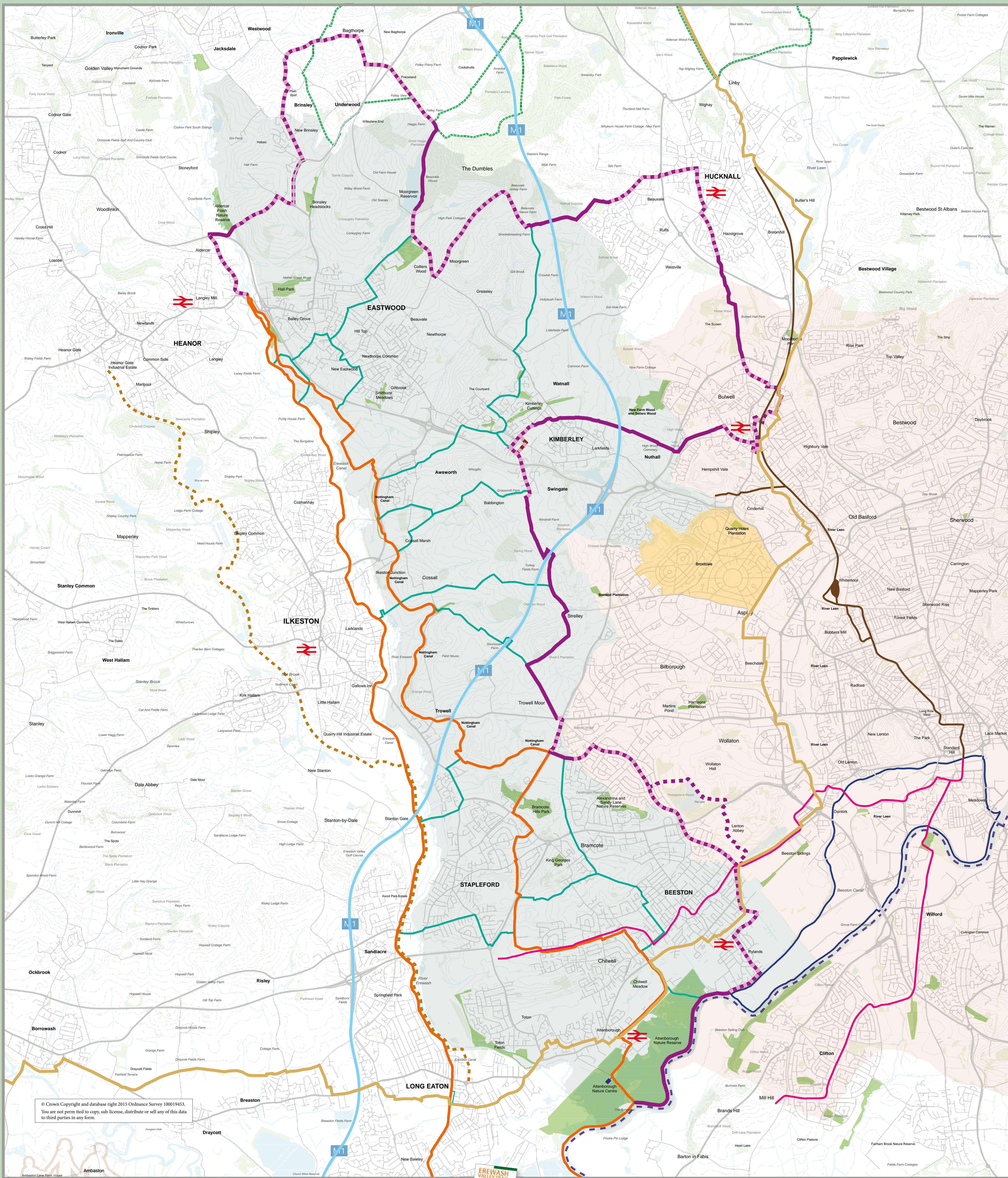
Broxtowe Country Trail

with associated walking
and cycling routes



Broxtowe Country Trail

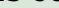
www.broxtowecountrytrail.co.uk



Broxtowe Country Trail

This map is intended to provide a guide to the route of the Broxtowe Country Trail and to give a flavour for the routes which run close by. There is extensive signage throughout the route so watch out for the distinctive finger signs and way markers.

The Ordnance Survey Explorer Map 260 takes in most of the trail and is very useful in providing detailed mapping.

PLEASE BE AWARE THAT THE TRAIL INCLUDES SOME VERY BUSY ON ROAD SECTIONS WHERE SPECIAL CARE IS NEEDED see  on the map above.








For full details of the Broxtowe Cycling Map and Erewash Valley Trail please see

www.nottinghamcity.gov.uk
www.erewashvalleytrail.co.uk

Map Key:



- Broxtowe Country Trail
 Broxtowe Country Trail (on road sections)
 Broxtowe Country Trail (alternative route)
 Broxtowe Country Trail links
 Trent Valley Way
 Ashfield Hidden Valley
 National Cycle Route No.6

-  Big Track
-  Nutbrook Trail
-  Erewash Valley Trail
-  Borough of Broxtowe
-  Nottingham City
-  Local Nature Reserves
-  Railway Stations
-  NET Tram Route (Phase 1)
-  NET Tram Route (Phase 2)