

BROXTOWE LOCAL PLAN

Proposals Map North

ADOPTED
MAY, 1985

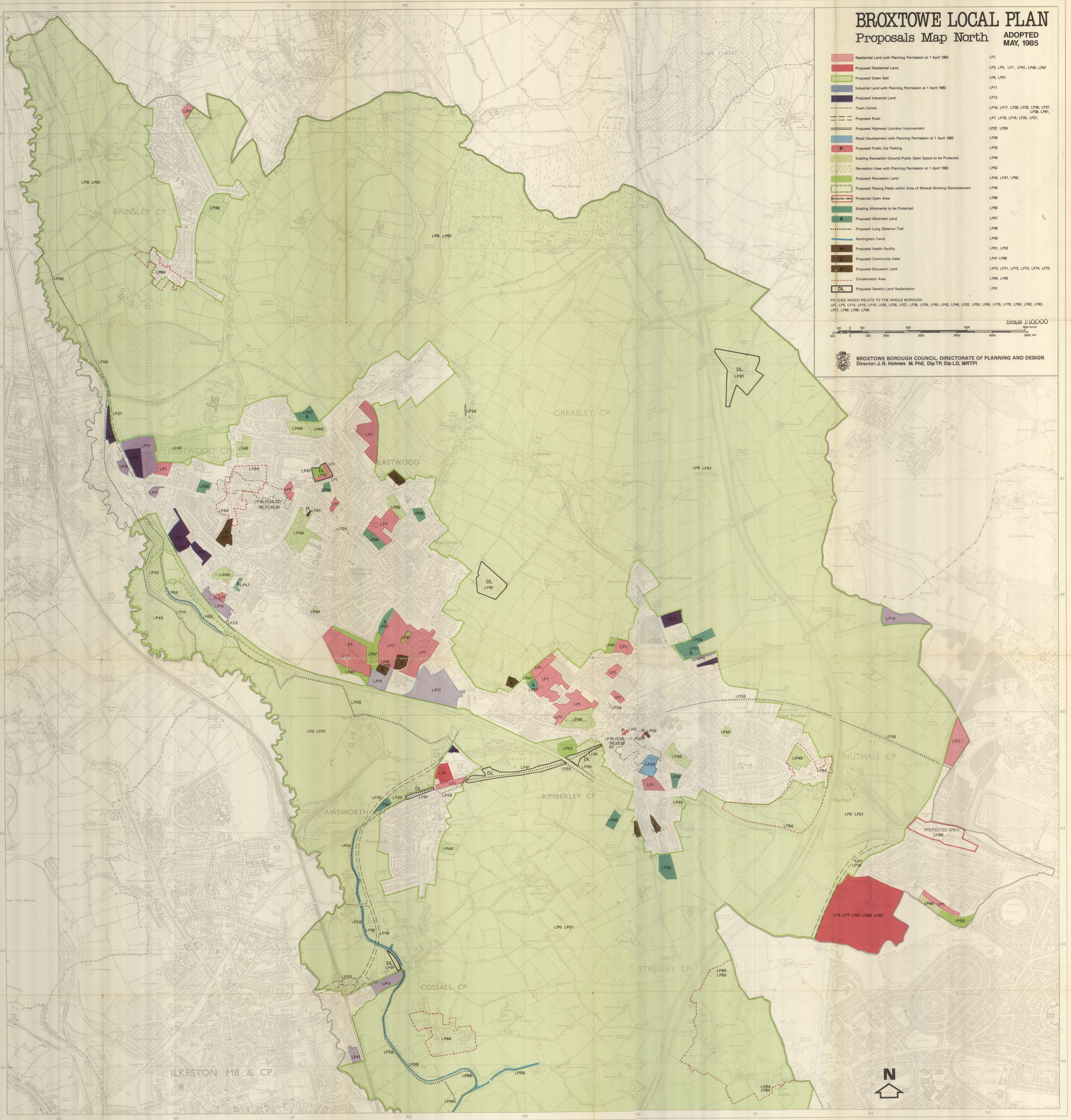
- Residential Land with Planning Permission at 1 April 1983
- Proposed Residential Land
- Proposed Green Belt
- Industrial Land with Planning Permission at 1 April 1983
- Proposed Industrial Land
- Town Centre
- Proposed Road
- Proposed Highway/Junction Improvement
- Retail Development with Planning Permission at 1 April 1983
- Proposed Public Car Parking
- Existing Recreation Ground/Public Open Space to be Protected
- Recreation Uses with Planning Permission at 1 April 1983
- Proposed Recreation Land
- Proposed Playing Fields within Area of Mineral Working Reinstatement
- Protected Open Area
- Existing Allotments to be Protected
- Proposed Allotment Land
- Proposed Long Distance Trail
- Nottingham Canal
- Proposed Health Facility
- Proposed Community Uses
- Proposed Education Land
- Conservation Area
- Proposed Derelict Land Reclamation

- LP1
- LP3, LP4, LP7, LP41, LP48, LP67
- LP6, LP51
- LP11
- LP13
- LP16, LP17, LP28, LP32, LP36, LP37, LP38, LP81
- LP7, LP18, LP19, LP20, LP21, LP22, LP24
- LP28
- LP33
- LP49
- LP53
- LP43, LP47, LP50
- LP45
- LP86
- LP56
- LP57
- LP58
- LP59
- LP61, LP62
- LP41, LP66
- LP70, LP71, LP72, LP73, LP74, LP75
- LP84, LP85
- LP91

Scale 1:10,000

POICIES WHICH RELATE TO THE WHOLE BOROUGH
LP1, LP3, LP4, LP5, LP6, LP7, LP8, LP9, LP10, LP11, LP12, LP13, LP14, LP15, LP16, LP17, LP18, LP19, LP20, LP21, LP22, LP23, LP24, LP25, LP26, LP27, LP28, LP29, LP30, LP31, LP32, LP33, LP34, LP35, LP36, LP37, LP38, LP39, LP40, LP41, LP42, LP43, LP44, LP45, LP46, LP47, LP48, LP49, LP50, LP51, LP52, LP53, LP54, LP55, LP56, LP57, LP58, LP59, LP60, LP61, LP62, LP63, LP64, LP65, LP66, LP67, LP68, LP69, LP70, LP71, LP72, LP73, LP74, LP75, LP76, LP77, LP78, LP79, LP80, LP81, LP82, LP83, LP84, LP85, LP86, LP87, LP88, LP89, LP90, LP91

BROXTOWE BOROUGH COUNCIL, DIRECTORATE OF PLANNING AND DESIGN
Director: J. R. Holmes M. Phil, Dip TP, Dip LD, MRTPI



Based upon the Ordnance Survey Map with the permission of the Controller of H.M. Stationery Office. Crown Copyright reserved.