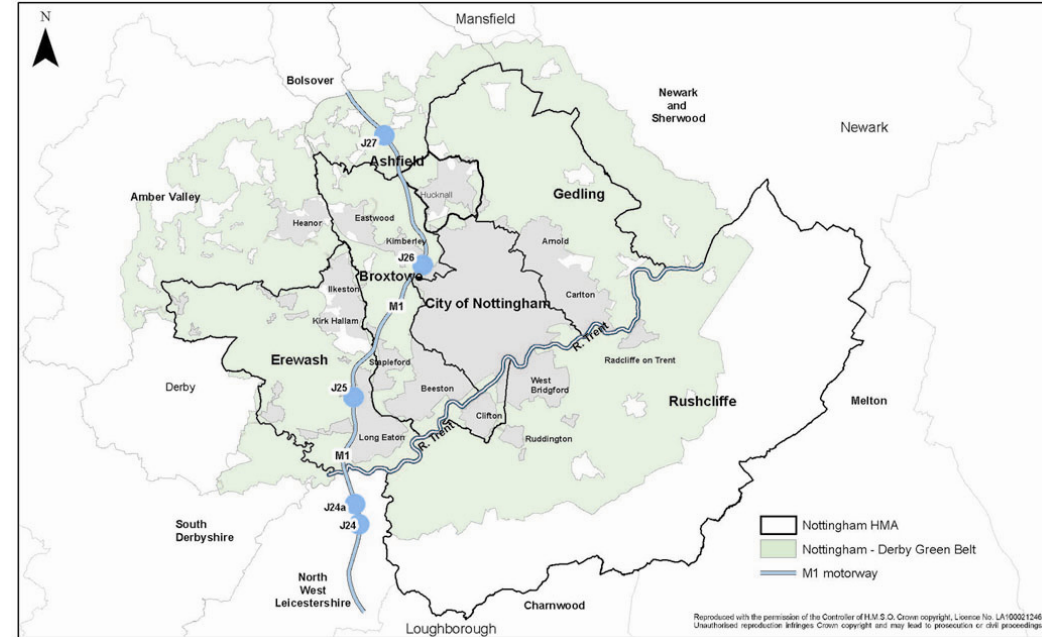


GREATER NOTTINGHAM ALIGNED CORE STRATEGY

GREEN BELT ISSUES AND OPTIONS



The Councils of Ashfield, Broxtowe, Erewash, Gedling, Nottingham City and Rushcliffe are working closely together to prepare the Core Strategy and this is the first stage. No decisions have yet been made, and this is the opportunity for you to influence the shape of Greater Nottingham in the future.



Other topics in this series

1. Accommodating Growth
2. Green Belt
3. Regeneration
4. Economy and Employment Land
5. The Role of Nottingham and its City and Town Centres
6. Neighbourhoods and Place Shaping
7. Transport and Accessibility
8. New Infrastructure to Support Growth
9. Green Infrastructure and Landscape Character
10. Climate Change
11. Broxtowe local issues
12. Erewash local issues
13. Gedling local issues
14. Nottingham City local issues
15. Rushcliffe local issues

“ABOUT YOUR GREEN BELT”

GREEN BELT is one of the themes that will be covered in the Greater Nottingham Core Strategy.

The Core Strategy will be a set of policies that discuss the key issues facing the area and guide its development up to 2026. It will be a key part of the Local Development Frameworks for Greater Nottingham, the new set of planning policies that will replace each Council's Local Plans.

The Issues and Options document, describing this first stage of the Core Strategy, expands on the topics in this series of leaflets. It is available at local council offices, libraries and on council websites, as well as at www.gngrowthpoint.com.

About your Green Belt

- The Green Belt is a strict planning policy which prevents most development in the open land for several miles around major towns.
- There is a Green Belt around Nottingham which effectively protects all of the open land between Nottingham and Derby.
- When major development plans are prepared, such as the Core Strategy, there has to be discussion about how the Green Belt boundary needs to be reviewed in order to accommodate some new planned development.
- The Green Belt helps to prevent towns and villages merging together by keeping open the gaps that separate them.
- The Green Belt helps to protect countryside and provide open-air recreation opportunities for people based in the conurbation.

Current issues about your Green Belt

- All the “potentially suitable” sites in the “Sustainable Urban Extensions” Study are in the Green Belt. This study is explained and described in the “Accommodating Growth” section of the Core Strategy Issues and Options document.

The scale of growth to be provided for by the Core Strategy means that some land will have to be taken out of the Green Belt to accommodate new development.

We need your views: please print and return pages 3-4 with your comments

Things to think about

- When land for new development has to be found, a strategic choice has to be made about whether protecting the Green Belt is more important than protecting open spaces within urban areas.
- Smaller gaps between built-up areas could be redesignated as Green Wedges.
- Villages which lie within the Green Belt could be taken out of the Green Belt to remove the severe restrictions on development.

How to get involved

We are now looking for your views on these issues. Your input at this stage will help us to prepare the Core Strategy and ensure that the final document includes the most appropriate policies for the future development of Greater Nottingham.

Please complete this simple questionnaire and send it to let us know your views - see over.

You can also visit our website at www.gngrowthpoint.com

Please fill in your contact details in order that we can register your comments and provide you with a written response. Please note, your comments cannot be kept confidential and will be made available for public inspection.

Name:

Address/
Email:

Completed questionnaires should be returned by
31st July 2009 to:

M Gregory
Growth Point Planning Manager
Exchange Buildings North
Smithy Row
Nottingham
NG1 2BS



Your personal information will be handled by the Council in accordance with the Data Protection Act 1998. Your information will not be disclosed to third parties and will not be used for any other purpose.

Choices to make about your Green Belt

GB1 How should the Green Belt be revised to accommodate growth?
(please tick 1)

Least change to the Green Belt boundary now, accepting that further changes will be necessary in the future.

Make a major change to the Green Belt boundary now which will accommodate planned and further growth.

GB2 Is there some land that should be added to the Green Belt?

Yes - If so, where?

No

GB3 Should any of the following have greater protection from new development than land in the Green Belt?

- Parks in urban areas Yes No
- Allotments Yes No
- Private residential gardens Yes No

If you have ticked “No” for all three above, it means you think saving the Green Belt is more important than saving any of these.

GB4 Within the Green Belt, what should be done about gaps between built-up areas?
(please tick 1)

Re-designate them as Green Wedges

Retain them as Green Belt

GB5 There are some villages wholly within the Green Belt where the policy severely restricts development. Should this restriction within the villages - (please tick 1) -

be removed?

be kept?

GB6 Are there any other issues or options relating to the Nottingham-Derby Green Belt?