



# Broxtowe matters

October 2016

## Contents

Council Updates  
P3-5 

Housing  
P6-9 

Community Safety  
P10-11 

Money Matters  
P12-13 

Business Growth  
P14-16 

Environment  
P17-20 

Health  
P21-23 

Contacts  
P24 



## New Leisure Company Launches

Liberty Leisure has launched and will deliver the Council's leisure and culture services including Leisure Centres, Sports, Events and the D.H Lawrence Birthplace Museum. Read more about how the new company will work and what changes you can expect on **Page 5**.



# Local care from a local company

Call us on: **0115 9226116**

[www.homeinstead.co.uk/nottingham](http://www.homeinstead.co.uk/nottingham)



Home Instead Senior Care, is an award-winning local company specialising in providing care to people in their own homes. The company opened its office in Nottingham nearly six years ago and provides a full range of services to help people of all ages remain independent.

Recommended highly by the Care Quality Commission for their level of quality service and positive client testimonials. Home Instead delivers care to clients across Nottingham with a wide range of needs. Caregivers have practical experience in supporting clients with conditions such as Alzheimer's, Parkinson's and Diabetes.

The Home Instead Senior Care service allows people to remain at home and lead an independent life. From a few hours a day, up to 24 hours 7 days a week we provide a full care service to match the needs of the individual.



*"Mrs Margaret R with her CAREGiver Marie, a finalist in the Nottingham Post Carer of the Year Award"*



## Services include:

- Companionship
- Light Housekeeping
- Local transportation & errands
- Meal preparation
- Respite support
- Convalescence support
- Shopping
- Personal care
- Specialist dementia & Alzheimer's care and much more...

## Dementia Friendly Communities - Workshops

Research suggests that Dementia affects each individual in different ways however, even at late stages a person can understand what is going on around them. This in turn means that many people with Dementia can continue to live a relatively "normal" life as long as there is adequate support available, not just at home but in the community. This is where Dementia friendly communities can play a major part.

The concept is simple: to improve the quality of life for people with dementia and help them to become active members of the community.

At Home Instead in Nottingham, we have developed a comprehensive training program for our CAREGivers which covers all the aspects of Dementia and provides practical advice and techniques to help those suffering from the disease to continue to enjoy a good quality of life.

Part of this training is now being delivered as **free workshops for families of those suffering from Alzheimer's and other Dementias or anybody who would like to find out more about the disease.**

If you would like to attend one of our seminars please contact us on **0115 9226116** or email: [primo.sule@homeinstead.co.uk](mailto:primo.sule@homeinstead.co.uk)



Home Instead Senior Care has been awarded a very prestigious Queen's Award for Enterprise in recognition of the innovative home care service we introduced to the UK in 2005.

The award is perhaps a bit extra special for us, it being announced on Her Majesty's 90th birthday.

The Queen's Award for Enterprise is the UK's highest accolade for business success. The award organisers recognise that our service addresses a growing demand from an increasing elderly population at a time when some aspects of Local Authority funded care are reported as inadequate.

They also recognise that our care is person-centred and includes the social wellbeing of our clients who benefit from minimum one hour visits, delivered by the same CAREGiver who we hand-pick to work with our clients based on shared interests.

Our mission is to change the face of ageing by delivering a unique service, tailored to the individual needs of our clients, and it is an absolute honour to receive this recognition.

We would like to thank our clients for trusting us with their care. We love doing what we do and shall continue to fly the flag for quality care, centred on the needs of each person we care for.

We are looking for CAREGivers who can help us to assist people with non-medical services including Companionship, Home Help and Personal Care in their own home.

Please call **0115 9226116**  
email to [recruitment.nottingham@homeinstead.co.uk](mailto:recruitment.nottingham@homeinstead.co.uk)



## Introduction from the Chief Executive

In response to the continuing financial challenges all local authorities face, Broxtowe has made some big decisions in the last few months which affect the way we deliver services.

We have set up a new private company – “Liberty Leisure Ltd”, which is wholly owned by the Council and this new structure will be responsible for delivering our leisure, arts, events and museum services in future. The new company will enjoy greater flexibility and entrepreneurial freedom to generate income for the Council, whilst continuing to align with one of our corporate priorities which is to enable the population of our Borough to enjoy healthy active lifestyles. Read more about it on page 5. Another bold decision we have made is to purchase the freehold interest on Beeston Square. This transaction made sound financial sense not only now, but particularly in the future, as we now have greater control in ensuring the remaining phase of regeneration in Beeston is successfully brought forward. You can read more details on page 14.



**Ruth Hyde OBE**  
Chief Executive



**Richard Jackson**  
Leader of the Council

We are also developing action plans for all our Town centres in Broxtowe, so the areas of Eastwood, Kimberley and Stapleford will not be left out. Our track record in developing relationships to share back office services with our neighbouring authorities has meant that reductions in expenditure or contributions towards costs results in an annual benefit of over £530,000 a year.

Government grant has reduced by 42% since 2010 and is anticipated to reduce to zero by 2019, so our quest for ever more efficient service delivery models continues. We aim to rise to this challenge whilst continuing to improve services to local people.

As you read the newsletter you will see the **email me** logo next to services which you can sign up to email updates on.



Visit [www.broxtowe.gov.uk/emailme](http://www.broxtowe.gov.uk/emailme) to sign up

## DO IT ONLINE

Broxtowe Borough Council offer a wide range of online services to make it easier and quicker for residents to do business with us.

**APPLY FOR IT**

**BOOK IT**

**LOCATE IT**

**PAY IT**

**REPORT IT**

**SAY IT**

**DO IT ONLINE**

[www.broxtowe.gov.uk](http://www.broxtowe.gov.uk)

**REGISTERING TO VOTE**

**COULD HELP IF YOU APPLY FOR CREDIT**

**BECAUSE AGENCIES MAY CHECK YOU'RE ON THE ELECTORAL REGISTER**

**YOUR VOTE MATTERS DON'T LOSE IT**

**ARE YOU REGISTERED?**  
Make sure you are on the register or you might not be able to vote in the future  
Register now at [www.gov.uk/register-to-vote](http://www.gov.uk/register-to-vote)

Broxtowe Borough COUNCIL



## Support Prostate Cancer UK at Diamond Charity Ball

The Mayor, Councillor Graham Harvey is supporting Prostate Cancer UK this year – a charity close to his heart. You can show your support by coming along to the Diamond Charity Ball on Saturday 8th April 2017 at the Nottingham Belfry Hotel.



Pre-book your tickets by emailing [civic@broxtowe.gov.uk](mailto:civic@broxtowe.gov.uk), call 0115 917 3210 or visit [www.broxtowe.gov.uk/wow](http://www.broxtowe.gov.uk/wow) to see the latest events taking place in the Borough.

## New Look Website – Coming Soon

We're working on a brand new Council website to bring it up to date and make it easier for you to use, no matter whether you are accessing it from your home computer or your mobile phone.

The new site will make it easier to find your top tasks and will be fully responsive across a range of devices.

Local residents were given the chance to have their say on the design concepts earlier this year.



Look out for the new Broxtowe Borough Council website in the New Year.

*sneak peak*



# Broxtowe Nonagenarians Celebrate Queen's 90th Birthday



Sandwiches, tea, scones and a special birthday cake were served to over 40 Broxtowe residents who were born in 1926 and their guests at The Spinney in Nuthall earlier this year to celebrate the Queen's 90th birthday.

Mayor of the Borough of Broxtowe, Councillor Graham Harvey joined Kenneth Clarke, who turned 90 on 9th June, the day after the event, to cut a specially made Royal-themed cake and a number of the guests were reunited with fellow residents who they had known in childhood.





## New Leisure Company Launches

The Council has launched Liberty Leisure, a wholly owned trading company to deliver leisure, culture, sports and events at the heart of Broxtowe's community.

Residents may have noticed the changes to employee uniforms and new signage, as well as a brand new, easy to use website at [www.liberty-leisure.org.uk](http://www.liberty-leisure.org.uk) where you can book your sessions and activities.

Existing members of the Council's Leisure Centres and Leisure Card Holders don't need to worry – you can still enjoy the same services and great discounts but with the added benefits of an exciting programme of improvements over the coming months including new activities and new services.

The new company is an innovative approach to providing better value for money for local people, as well as an exciting opportunity to improve health and wellbeing with profits being reinvested directly in to leisure and culture services.

Discover Liberty Leisure at [www.liberty-leisure.org.uk](http://www.liberty-leisure.org.uk) or find them on Facebook.





# Housing News

## Keeping Eastwood Tidy

A neighbourhood clean-up event took place in Eastwood in July to encourage tenants to free up space in their properties by getting rid of waste and unwanted items. The areas covered included Hopkins Court, Princes Street, Wellington Street, Albert Street and Hopkins Court and tenants from these properties were encouraged to work with officers and other tenants to complete a general tidy up of the area.

The on-going project is aimed at local communities throughout the Borough to join in with the Council to help tackle litter, rubbish and graffiti in their streets, estates, residential areas and pathways. This year, residents' children got involved in helping out by picking litter and were rewarded with a toy for every bag of rubbish that was returned.

The Council is continuing to look at areas in the Borough where more events can be held.



## Older People's Week

Ballroom Dancing, Live Music and Magic were just a few of the activities hosted at Retirement Living schemes for Older People's Week recently. The National Awareness Week, which marks Older People's Day on 1st October each year has become one of the biggest events in the Council's calendar and ensures that older residents who can't travel very far can still enjoy a wide range of fun and social activities with their friends and family.



## Chilwell Community Group

The newly established Chilwell Community Group recently held their first open day with ideas for activities ranging from day trips to clean-up days. The group intends to provide support and a link to agencies that can provide assistance, with support from the Council's Housing Team.

The group is planning more community events and have a Facebook group where you can keep up to date with their plans. If you have any questions for the group you can contact them on 07983 665 805 (between 10:00am and 3:00pm only) or email [chilwellcommunitygroup@yahoo.com](mailto:chilwellcommunitygroup@yahoo.com)



## Home Improvements

Work has recently begun on six new homes at Bexhill Court in Beeston. The Council has been working closely with Nottingham Community Housing Association (NCHA), Waters Homes and Pelham Architects to develop the two one bedroom bungalows for older people and four two bedroom, dementia friendly bungalows. Facilities will include level access showers and attractive gardens with views over Beeston Fields recreation ground and bowling green.

Lombardy Lodge, a Retirement Living scheme in Toton, has recently gone through modernisations works to update the appearance of the entrance and communal area. Following consultation with residents, plans were drawn up to rebuild the frontage of the building and to extend the existing entrance lobby to turn it into a garden room with new bi-fold doors opening straight into the gardens.

## #Housing Matters

Following the success of last year's social media takeover day in November 2015, the Housing Team planned a programme of social media activities taking place from Monday 19th September, which is this year's National Housing Day.

Housing Officers participated in a #housingdaychat, which involved responding in 'real-time' to any questions from tenants sent via Twitter. Members of the public were able to see activities of the repairs team through social media, including reactive day-to-day repairs, gas servicing and electrical testing.

Vicki Whittaker-Stokes, the Council's Head of Housing also provided a 'day in the life of' feature to tweet about her day-to-day activities.

**Contact Housing on 0115 917 7777, email [housing@broxtowe.gov.uk](mailto:housing@broxtowe.gov.uk) or visit [www.broxtowe.gov.uk/housing](http://www.broxtowe.gov.uk/housing)**





# Broxtowe Youth Homelessness – Supporting Young People



**BROXTOWE YOUTH HOMELESSNESS**



Homelessness happens to ordinary people and it can be devastating to the lives of those who do experience it. If you or a young person you know is facing homelessness, Broxtowe Youth Homelessness (BYH) can help by offering a range of support.

From addressing practical needs such as employment, education and maintaining secure accommodation, BYH also offers the support needed by each individual in order to improve their happiness, health and outlook on life. This might be by providing clothing, food and toiletries, helping them settle into their first home,

giving advice and making referrals, helping them gain qualifications through our training programme, or simply by being a friendly face to turn to in times of need.

They also run a drop in service in the Living Room at the Carnegie Centre Annex, Warren Avenue Stapleford on Mondays between 1.00pm and 3.00pm and Wednesdays between 10.00am and 12.00pm.

**For more information call 0115 939 6760, email [enquiries@broxtoweyouthhomeless.org](mailto:enquiries@broxtoweyouthhomeless.org), visit [www.broxtoweyouthhomeless.org.uk](http://www.broxtoweyouthhomeless.org.uk) or find them on Facebook or Twitter @homestreethome1**



## Want To Build Your Own Grand Design?

Have you ever considered buying a plot of land to build your own Grand Design?

As part of new legislation, the Council is researching what demand there is for custom and self-build development plots in the Borough and wants to hear from you. Simply fill in your details at [www.broxtowe.gov.uk/selfbuild](http://www.broxtowe.gov.uk/selfbuild)

## Complete care and support

Home-based support that is as individual as you are

### We care

Whether you need short term help to bridge a gap, urgent care in an emergency or ongoing long term support, NCHA has a range of services available to help you live independently at home:

- Home visits
- Help getting up and dressed
- Support with cleaning, washing, laundry and daily household chores
- Advice on money management; bills and benefits
- Medication reminders
- Help with shopping
- Help with hospital discharge arrangements
- Increased contact with family and friends with support through technology
- Support with going out
- 24/7 assistive technology

### We're qualified

With more than 40 years experience we understand what people at all stages of life need to live independent lives.



### Time for a bit of help around the house?

Why not contact us for more information on all the home-based support services available?

Call **03330 000320**, email [care.enquiries@ncha.org.uk](mailto:care.enquiries@ncha.org.uk) or visit [www.ncha.org.uk/care](http://www.ncha.org.uk/care) for a complete package tailored to you.







## Meet Your New Community Mediators

Six new Community Mediators have joined Broxtowe Borough Mediation Service after completing their Open College Network Certificate in Understanding Mediation.

Russ, Janet and Annie (pictured) were congratulated by the Mayor, Councillor Graham Harvey at the Annual Open Meeting in June alongside their fellow newly trained Mediators Patrice, Colin and Mia.

You don't have to like your neighbours but you do have to live near them. Broxtowe Borough Mediation Service can help if you are experiencing issues with your neighbours through trained Mediators who will listen and talk to the people involved and help them reach an agreement that works for everyone.

Interested in becoming a Community Mediator? Free training is available if you're willing to volunteer.



Contact [mediation@broxtowe.gov.uk](mailto:mediation@broxtowe.gov.uk), call 0115 917 3736 or visit [www.broxtowe.gov.uk/mediation](http://www.broxtowe.gov.uk/mediation) for more information.

## Is your boiler up to scratch?

The Greater Nottingham Healthy Housing Service is urging Broxtowe's private households to make sure their boiler is safe and ready for winter. This service is part funded by Public Health within Nottinghamshire County Council and is managed by Nottingham Energy Partnership, a Queen's award-winning environmental climate change charity.

### Free Boiler Replacement Scheme

In partnership with British Gas, eligible households can get a brand new 'A' rated boiler. You don't have to be a British Gas customer to qualify.

### £400 off Boiler Replacement Scheme

Healthy Housing also runs their very own subsidised

boiler scheme which offers eligible households £400 off the cost of a new boiler.

By replacing your old, inefficient boiler you can look forward to savings of up to £260 off your heating bill.

### Book an Energy Switching Workshop for your group

These sessions are free, engaging and you could save up to £200 on your energy bill. Each session is 45 minutes long and includes a free visit.

**For help or advice with any of these services please contact the Healthy Housing Team on 0115 985 3009, email [jenalle.anderson@nottenergy.com](mailto:jenalle.anderson@nottenergy.com) or visit [www.healthy-housing-service.com](http://www.healthy-housing-service.com)**





# Keep Safe This Winter

With winter on its way, the nights drawing in and loads of festivities to enjoy, it's important to make sure you stay safe. Here's some top tips:



## Bonfire Night

- Go to an organised display
- Buy fireworks from a legitimate retailer
- Bonfires should be at least 18m (60ft) from houses, trees, hedges, fences and sheds
- On bonfire night, make sure your wheelie bin is out of sight



## Leaving your home unattended

- Lock all doors and gates and invest in a security light and burglar alarm
- Use timer switches or leave the radio on to make it seem like someone is home
- Don't leave Christmas presents in view



## Using cash points

- Don't use it if you see anything suspicious
- Ensure your PIN number can't be seen
- Avoid carrying large amounts of cash
- Put your money and cards away before leaving the machine



## Things to remember

- Remember, your safety and wellbeing is far more important than material belongings
- Register valuable items at [www.immobilise.com](http://www.immobilise.com), a free property register that increases the chance of any stolen property being returned

## Out and about

- Always close car windows, use steering lock and lock doors
- Keep items out of sight in the boot
- Park in a well-lit area, an attended car park or a safer car park displaying Park Mark signage [www.parkmark.co.uk](http://www.parkmark.co.uk)
- Ensure someone knows where you are and when you will be home
- Cycle safely with lights or reflective clothing
- Don't leave bags on chair backs and keep purses and wallets close by
- Drink responsibly, stay in groups, never accept drinks from strangers or leave drinks unattended
- Don't drink and drive
- Plan how you will get home - keep fares separate so you can still get home if you lose your wallet or purse
- Always check taxi driver's identification - don't get into an unlicensed taxi
- Never walk home alone, don't take shortcuts through alleys or open spaces and stick to well-lit areas
- If you are being followed, cross the street and get to a busy place

### IMPORTANT CONTACTS

To find out about crime in Broxtowe check out the Neighbourhood Alert System at

[www.nottswatch.co.uk](http://www.nottswatch.co.uk) or visit the Nottinghamshire Police website at [www.nottinghamshire.police.uk](http://www.nottinghamshire.police.uk)

In an emergency or to report a crime in progress contact the police on **999**.

To report information and suspicious activity contact the non-emergency Nottinghamshire Police number **101**.

To report crime anonymously contact Crimestoppers on **0800 555 111**



The South Nottinghamshire Community Safety Partnership continues to work hard to reduce crime across South Nottinghamshire including high-visibility policing, covert operations, CCTV surveillance and security patrols.



## Teens Learn About Healthy Relationships

It's not just adults who can experience abuse in their relationships and teenagers can also be affected.

Equation, a charity which works to help reduce the harm caused by domestic violence and sexual abuse in Nottinghamshire, is working in partnership with the Youth Service to raise awareness of healthy relationships amongst under 14 year olds in Eastwood. The project has been funded by the Nottinghamshire Police and Crime Commissioner's Office.

Activities have included a number of 'Movie Nights' to provide young people with opportunities to learn about healthy relationships based on respect and consent, as well as where to go to access support. The sessions

have proved to be popular with young people who have discussed and explored their own thoughts and opinions about relationships.

Women's Aid Integrated Services provide a Teen Advocate Service offering one to one and group support to girls and boys (aged 13 – 17 years) experiencing abuse in their intimate relationships.

### For more information

email [childrenandteen@wais.org.uk](mailto:childrenandteen@wais.org.uk) or phone 0115 822 1777 (Monday to Friday from 9.00 am to 5.00 pm) or visit [www.equation.org.uk](http://www.equation.org.uk)



## Volunteer At Broxtowe Women's Project

Broxtowe Women's Project, which supports women and families who have been affected by domestic abuse, have recently recruited a Volunteer Coordinator to develop a volunteer programme within Broxtowe Borough.

The new volunteer programme will give women the opportunity to volunteer within the organisation and have access to a range of training packages to enable them to support other women and enhance existing services.

The project has been funded for one year by Coalfields Regeneration and Boots Charitable Trust.

**If you are interested in becoming a volunteer, please contact 01773 718 555.**



Broxtowe Matters is published twice a year by Broxtowe Borough Council and the Broxtowe Borough Partnership to keep residents informed about its services and the work it does in the Borough.

Broxtowe Matters is printed by Systematic Print Management and costs just 16p per copy. It is produced from sustainable resources from managed forests so that new trees grow to replace the wood cut for pulping. If you do not wish to keep this magazine for future reference, please recycle it in your green-lidded bin. It is distributed to more than 50,000 homes and businesses in the Borough by Royal Mail.

Advertising for this newsletter have been sourced by Spot On Media Ltd. The Council does not endorse any products or services advertised through this publication.

**We welcome your comments and views – just get in touch at [press@broxtowe.gov.uk](mailto:press@broxtowe.gov.uk) or call 0115 917 3825.**



# 2015/16 Annual Report Summary

Each year the Council must decide how it will spend the money it receives from the council tax you pay, business rates, government grants and other income we receive.

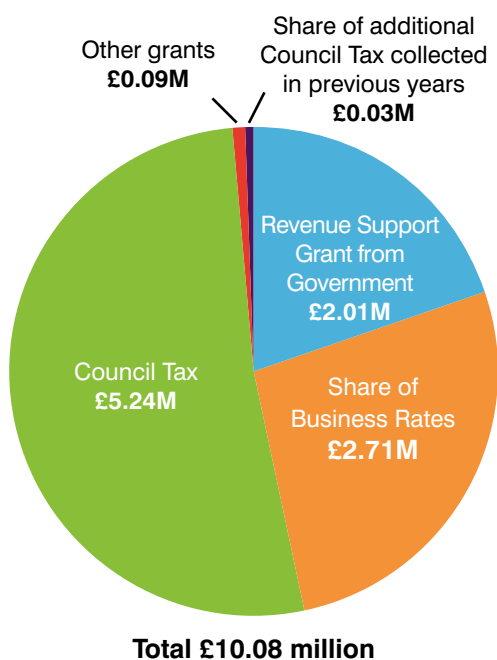


## General Fund

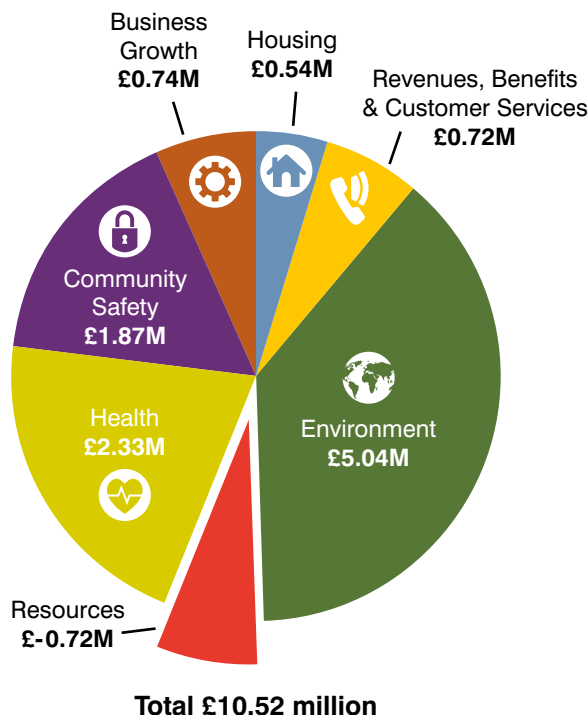
Day to day running costs of the Council services (except council housing) e.g. salaries, transport, general office running costs and income from fees and charges

The Council spent a net £0.44 million more than it received in funding. However, it spent £0.74 million less than planned.

### How the money was raised



### Where the money was spent



More detailed information about the Council's finances can be found in the Annual Statement of Accounts at [www.broxtowe.gov.uk](http://www.broxtowe.gov.uk) or by contacting [finance@broxtowe.gov.uk](mailto:finance@broxtowe.gov.uk) or 0115 917 3228

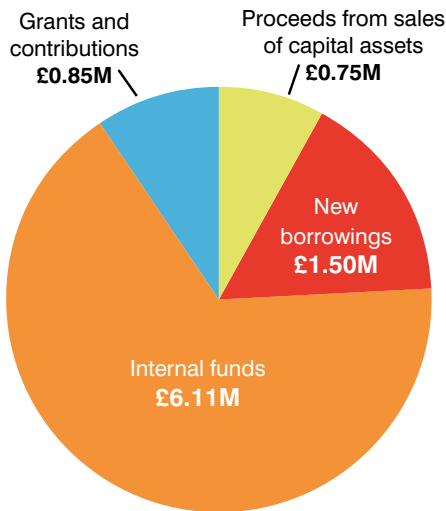




## Capital Spending

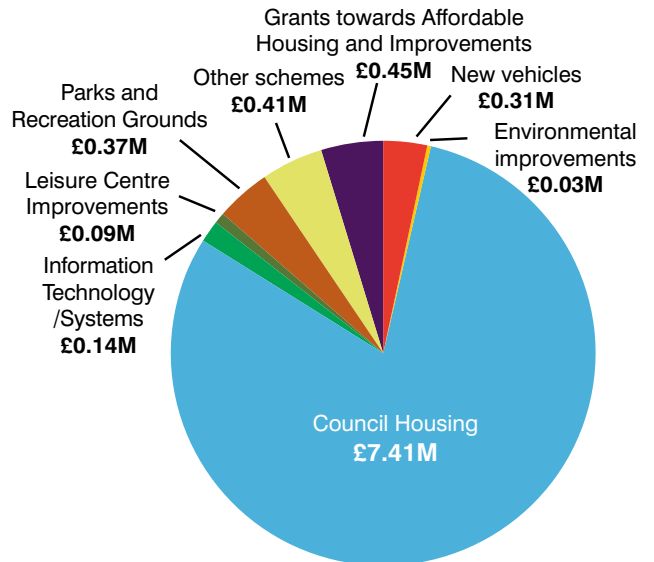
Spending of a “one-off” nature on improvement projects such as housing modernisations, vehicles, equipment and software. This included £3.52 million on the housing modernisation programme, £2.05 million on gas heating replacement and £0.44 million disabled facilities grants.

### How the money was raised



Total £9.21 million

### Where the money was spent

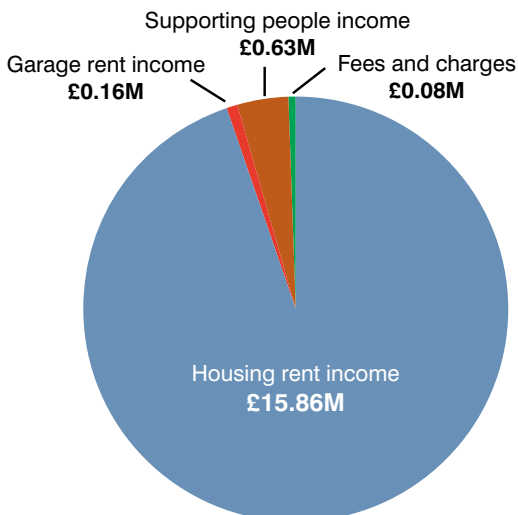


Total £9.21 million

## Housing Revenue Account

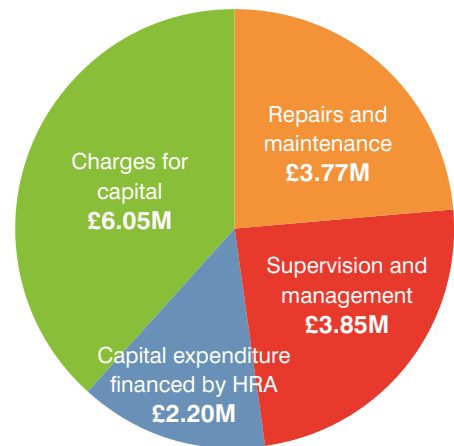
Day to day costs and income in respect of Council housing.

### How the money was raised

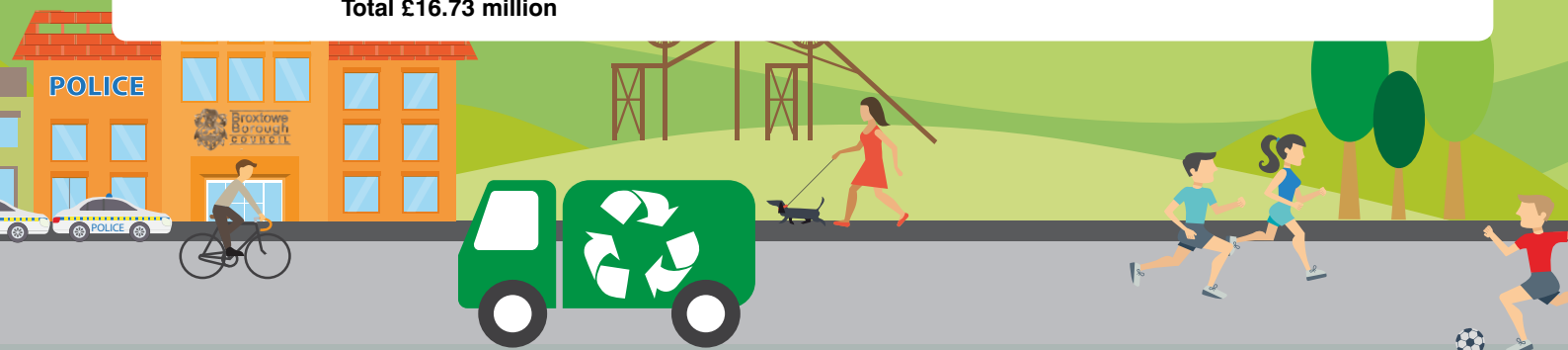


Total £16.73 million

### Where the money was spent



Total £15.87 million





# Future Of Beeston Secured

The Council has purchased the leasehold interest of Beeston Square in a multi-million pound deal to help secure the future development of the town.

The Council purchased the leasehold interest from owners Henry Boot for £7.565 million following negotiations with the Council's Property Consultants and Chartered Surveyors, FHP.

"This is an important step in giving the Council more direct control over this important part of the town centre and the future of development in the area. The Council is united on the purchase of The Square after it was unanimously approved by Full Council and we are excited to begin the next phase of Beeston's redevelopment" said Councillor Richard Jackson, Leader of the Council.

The Council will work with all the existing tenants to maintain and improve the retail, service and leisure offer in Beeston. The purchase will allow the Council to bring in

significant income and have more control over the Phase 2 redevelopment of the area.

**Want to know more? Email [estates@broxtowe.gov.uk](mailto:estates@broxtowe.gov.uk) or call 0115 917 3655**



**PHA**  
paul holman associates

Co-produced by Derby LIVE

Mrs Brown's Boys' Winnie McGoogan  
**ELISH O'CARROLL**  
Fairy Godmother

TV, West End and Comedy star  
**RICHARD BLACKWOOD**  
Buttons

Art Attack's  
**LLOYD WARBEY**  
Dandini

# Cinderella

Save £s  
**Family tickets**  
available

Book by 31 Oct to  
**save £2**

**Derby Arena**  
Tue 6 Dec - Tue 3 Jan  
£13.25 - £30.25

BOX OFFICE  
**01332 255800 | [derbylive.co.uk](http://derbylive.co.uk)**

Derby City Council

## TRACK CYCLING

**DERBY ARENA**

- Beginners & accreditation
- Women's, veteran & young people
- Corporate & private bookings
- Gift vouchers
- Track leagues & Wattbike studio

[derbyarena.co.uk](http://derbyarena.co.uk)



## Small Business Saturday 2016

Broxtowe was one of the 75% of councils in the UK that supported the Small Business Saturday campaign in 2015 and look forward to building on last year's success in the Borough on Saturday 3rd December this year!

Last year visiting shoppers to our four great town centres proved there is still huge support and need for the brilliant retailers that have made their home in Broxtowe and played their part in the extra £119m (24%) being spent on the day with small businesses in the UK, compared with 2014.

As in previous years, businesses in Broxtowe's Town Centres will be urged to create special 'one off' promotions for the day, as an extra incentive to get people to 'Shop Small' and as a thank you for supporting their local town centres during the busiest period of retail spending. Look out for businesses displaying posters in the run up to the big day and check out the Eastwood, Kimberley and Stapleford:now websites for more details on any offers.

## Town Centre Occupancy Rates

The table below details the Ground Floor Retail & Leisure occupancy rates in our four Town Centres. The Average Vacancy Rate in the UK was 9.6%\*

Location	% Occupied Shop Units	+/- Against National Average
Beeston Town Centre	95.7%	+5.3%
Eastwood Town Centre	89.7%	-0.7%
Kimberley Town Centre	87.7%	-2.7%
Stapleford Town Centre	90.3%	-0.1%

\*All Figures taken July 2016

Occupancy figures for each town can be found online at [www.broxtowe.gov.uk/towncentres](http://www.broxtowe.gov.uk/towncentres) and are updated monthly. Here you can also view footfall figures for Beeston town centre, which are updated weekly.



# Farmers Markets Bringing Local Produce To You



## Beeston

Beeston Farmers Market continues to grow each time it takes place on the 3rd Saturday of every month.

From fresh meat, game, pies and honey, to fudge, real ale as well as the usual homemade cakes and jams there are also some more exotic offerings including a selection of Indian snacks and sauces and speciality blended teas. The popular monthly BBQ is complimented by a variety of 'street foods'.



Beeston Farmers' Market



@farmmktmanager

## Town Centre Markets

Markets take place each week in Broxtowe – for the most update to date information about your local market or if you're a trader wishing to register your interest in stalls, please visit [www.broxtowe.gov.uk/markets](http://www.broxtowe.gov.uk/markets)



Location	Time	Days
Beeston Monday General Market, The Square	9:00 - 15:00	Mondays (Weekly)
Beeston Wednesday General Market, The Square	8:00 - 16:00	Wednesdays (Weekly)
Beeston Farmers Market, The Square	9:00 - 14:00	(Third Saturday) of every month





## GILLOTTS

FUNERAL DIRECTORS

---

### Gillotts Funeral Directors have been serving families for generations



We are proud to have been awarded 'Family Business of the Year' at the 2016 Best of Broxtowe Awards

154 Nottingham Rd, Eastwood NG16 3GG, Tel: 01773 713484

1a Abbott St, Heanor DE75 7QD, Tel: 01773 713921

136 Derby Rd, Stapleford NG9 7AY, Tel: 0115 949 1534

The Old Church, Main St, Kimberley NG16 2LL, Tel: 0115 938 6720

133 Nottingham Rd, Selston NG16 6BT, Tel: 01773 306909

Partners: Barry Hutsby, Elaine Hutsby, Joanne Hutsby, Anthony Topley



www.gillotts.co.uk

---

SERVING FAMILIES FOR GENERATIONS



"We want to be remembered with a smile!"

Make sure your funeral celebrates your life the way you want it to with a Perfect Choice Funeral Plan from Gillotts Funeral Directors

Flexible plans

Financial security

Instalment options

Friendly local advice





# What's Happening In Our Parks & Open Spaces

Did you know there are 34 blue plaques in South Broxtowe highlighting the historical roots of the area? Pick your guide up at Beeston or Stapleford Library.

## More improvements to play area at Ilkeston Road Recreation Ground

The Council has been working in partnership with Stapleford Community Group to secure £10,000 from the Lottery "Awards for All" grant fund. This will be used to create a "Tyre Park" which will be the first of its kind in Broxtowe.



## Ten Award Winning Years For Bramcote Hills Park

The park has recently celebrated ten years of being a prestigious Green Flag Award winning park, marked by a special event to thank various people who have been pivotal in its success. Colliers Wood at Moorgreen also retained its Green Flag, as did Community Green Flag sites at Alexandrina Plantation / Sandy Lane Open Space, Bramcote Old Church Tower and Brinsley Headstocks.

## Long Awaited Skatepark Opens In Eastwood

A new £250,000 skatepark was officially opened at Coronation Park in Eastwood in June after funding was raised in a partnership initiative between Broxtowe Borough Council and Nottinghamshire County Council, as well as local people and groups including Waste Recycling Environmental. Two local teenagers, Rhianne Lounds and Beth Lee began fundraising five years ago, when they were aged 13, for the new skatepark and raised the initial funding which started the process and helped attract additional external funding.



## Play Area Improvements – Tell us What You Think

The Council is working with Groundwork Greater Nottingham to devise a new strategy for improving play areas in the Borough. If you would like to tell us about your local play area please complete the short surveys at [www.surveymonkey.co.uk/r/Broxtoweplaystrategy10-16](http://www.surveymonkey.co.uk/r/Broxtoweplaystrategy10-16) and [www.surveymonkey.co.uk/r/Broxtoweplaystrategy5-9](http://www.surveymonkey.co.uk/r/Broxtoweplaystrategy5-9)

Contact our Parks Team on 0115 917 3507, email [grounds@broxtowe.gov.uk](mailto:grounds@broxtowe.gov.uk) or visit [www.broxtowe.gov.uk/parks](http://www.broxtowe.gov.uk/parks) to find out more about Broxtowe's fantastic parks and open spaces.





# Garden Waste Collection Service



Subscribe to the garden waste collection service from 1st November and you can save £5 on your subscription for the remainder of the year and a further £5 on any additional bins you order.

From 1st November we'll be reducing the charge for the garden waste collection service for the remainder of the 2016/17 subscription year to just £25 for one brown-lidded bin and £5 for every additional bin.

Residents who have already signed up to the service but would like additional bins can also take advantage of the discount and pay just £5 per extra bin.

Not yet subscribed to the garden waste collection service? It's a cheaper and easier way of disposing of all the garden waste that's been generated over the autumn and winter period.

Garden bins remain the property of the Council at all times.

**Subscribe online at [www.broxtowe.gov.uk/gardenwaste](http://www.broxtowe.gov.uk/gardenwaste) or call 0115 917 7777**

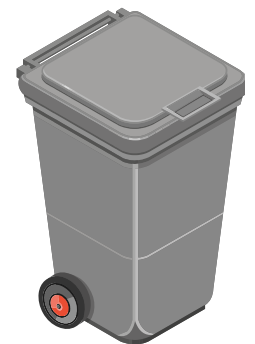
**PAY IT**



## Waste & Recycling Collection Calendars

We've listened to your feedback about how you receive your waste and recycling collection calendar and have decided to deliver the new calendar for 2016/17 to your property.

You'll receive your calendar in early to mid-November and it will also contain information about your Christmas and New Year arrangements.



## What can go in the green lidded recycling bin?



	<b>PAPER/CARD</b>	Newspapers & Magazines	<b>PLASTIC</b>	Plastic Cleaning Product Bottles	<b>METAL</b>	Drink Cans
		Catalogues & Phone Directories		Plastic Drink Bottles		Food Tins
		Card & Cardboard Packaging		Yoghurt Pots & Margarine Tubs		Aerosol Cans
		Junk Mail, Leaflets & Paperwork		Plastic Toiletry Bottles		



[www.broxtowe.gov.uk/recycling](http://www.broxtowe.gov.uk/recycling)



Photograph taken by Ian Ward

## Inspiring People & Improving Places

As part of Nottinghamshire County Council's Supporting Local Communities fund, the Practical Conservation Volunteers, in partnership with Broxtowe Borough Council, have secured £10,000 of funding to continue environmental improvements at Broxtowe's Parks and Open Spaces.

"Over the years volunteers have worked hard to enhance the biodiversity of Broxtowe's Parks and Open Spaces and Local Nature Reserves. This funding will have a lasting impact so that the local environment can be enjoyed by everyone now and in the future" said Project Manager, Ian Ward.

**Practical Conservation Volunteers get together weekdays and weekends and you can get involved by calling Ian on 07739 447 979.**

## Help Our Hedgehogs!

Hedgehog numbers are falling and its estimated that there's less than one million left in the UK. You can help our hedgehogs by:

Gardening in a wildlife friendly way – top tips are available at <http://wildaboutgardens.org.uk>

Allow access between yours and your neighbours gardens by cutting a hole in your fence or digging a scrape below it

Hedgehogs love logs and leaf piles to nest and hibernate in – why not build a hedgehog nest box?

Cover drains and open gullies and provide an escape ramp in the corner of your pond

Think about hedgehogs around bonfire time, which is when they often look for hibernation sites – build your bonfire on the day it's going to be lit

Find out more tips at [www.hedgehogstreet.org](http://www.hedgehogstreet.org), [www.britishhedgehogs.org.uk](http://www.britishhedgehogs.org.uk)



Nottinghamshire Wildlife Trust is assisting with setting up a new Hedgehog Group in the Eastwood area.

**Contact Ben Driver on [bdriver@nottswt.co.uk](mailto:bdriver@nottswt.co.uk) or 0115 917 8242 to get involved.**



Photograph taken by Darin Smith





# Tree Planting Grants



Community Tree Planting Grants of up to £250 are on offer for community groups, Town and Parish Councils and schools for tree planting projects on land which is open to the public, including school grounds.

The funding is on offer from the Greenwood Community Forest Team who work to enable communities in Nottinghamshire to create, improve and enjoy woodlands and green space in ways that benefit the environment, the landscape and the local economy.

**If your group is interested in a grant or wishes to discuss a possible tree planting project please contact [greenwood@nottscc.gov.uk](mailto:greenwood@nottscc.gov.uk), 0115 993 2600 or visit [www.greenwoodforest.org.uk](http://www.greenwoodforest.org.uk)**

## A.W. LYMN

### *The Family Funeral Service*

Personally owned & managed by the Lymn Rose Family



- 24 hour service from our staff
- Rolls-Royce & Bentley fleets
- Chapel of rest & car parking facilities at all of our locations
- Pre-paid funeral plans
- Finance terms available
- Coffin & casket selection room

Quality at affordable prices, please call to arrange a free, no obligation, quotation or home visit.

**Beeston**  
Trent House 106 Station Road  
Tel: 0115 922 0433

**Stapleford**  
25 Church Street, NG9 8GA  
Tel: 0115 949 9211

[www.lymn.co.uk](http://www.lymn.co.uk) /awlymn /awlymn



*"Our family serving your family since 1907"*





## Community Celebration Blanket

This beautiful blanket has been created by many helping hands of all ages and cultural backgrounds. It represents the diverse community in Broxtowe Borough who have had various opportunities to come together throughout the year.

The blanket started its journey in January 2015 at the Chinese New Year Celebrations. More hands helped to knit and decorate squares at the Spring Celebration in Eastwood.

In June it attracted lots of helping hands at the Community Celebration in Beeston and finally it was completed at the Season of Lights Festival in November.

A big thank you to everyone who gave time to knit/crochet squares and created the amazing decorations. It is hoped that the blanket will be displayed in various places around the Borough over the coming year.

**Broxtowe Community Celebration Group is a local voluntary group which brings people together through free, fun activities. To find out more find them on Facebook or call 0115 917 3712**



## Broxtowe Cycle Centres

RideWise Cycle Centres, funded by Broxtowe Borough Council, has enabled cycling activity in the area to go from strength to strength and over 160 cyclists have taken part in group rides recently.

Joining these rides is a great way to make new friends with a shared interest while contributing towards a healthy lifestyle habit. And it's good for the environment!

Cycling lessons are also booming. Beeston and Stapleford Cycle Centres regularly support 30-40 people on a Saturday morning.

Nazia Tanveer and her daughter Aniaya have been coming to the Stapleford Centre since April 2015 and have both recently passed their level one certificate. Nazia cannot speak highly enough of the instructor and says "I've recommended the classes to many of our friends and some of them are now having lessons too. Russell is a fantastic tutor, very personable and the kids love him"

**For more information visit [www.ridewise.org.uk](http://www.ridewise.org.uk) or call 0115 9552288**





# Life Saving Defibrillators Installed

Life-saving Public Access Defibrillators have been installed across the Borough thanks to a partnership between Broxtowe Borough Council and its contractors United Living, Vinshire Plumbing and Heating and Ian Williams, as well as East Midlands Ambulance Service and Town and Parish Councils.

The contractors have sponsored the project by pledging to provide at least 8 defibrillators throughout the Borough.

So far, they have been installed at the following locations:

- Cossall (former telephone box)
- Brinsley Parish Hall
- The Magpie Pub, Stapleford (funding sourced by Stapleford Community Group)
- The West End Club, Stapleford
- Memorial Hall, Bramcote
- Town Council Offices/Post Office, Eastwood



Additional defibrillators are due to be installed over the coming months in Greasley and Bramcote.

In the event of an emergency, the person who called 999 for an ambulance would be given the code to the cabinet and have immediate access to the device.

Find out more on 0115 917 3659 or email [capitalworks@broxtowe.gov.uk](mailto:capitalworks@broxtowe.gov.uk)

## Have Your Say With Healthwatch



Healthwatch can visit your group, workplace or venue for a fun, information coffee and chat session to gather feedback and can be specific to your needs by focusing on particularly topics of health issues.

Every story they hear, helps build a picture of the services so they can give feedback to providers and let them know what is working well and where improvements could be made. Talking to them can help improve services for future patients.

To arrange a visit, contact [info@healthwatchnottinghamshire.co.uk](mailto:info@healthwatchnottinghamshire.co.uk), call 0115 963 5179 or call 0115 963 5179



A WORLD-CLASS EDUCATION FOR YOUR CHILD



Across the globe, the Kumon **Maths and English** Programmes advance students beyond their school level.

To unlock your child's potential, contact your local Instructor for a free assessment.

**Beeston Study Centre**  
Kailash Dal 0115 9193578

**KUMON**

[kumon.co.uk](http://kumon.co.uk)

Fees vary. Please refer to your local study centre.



## Everyone Health Change Point Service

Local residents have been getting free health advice at a series of Well Being at Work events run by Everyone Health.

Janine Curtis, Health Coach for Broxtowe visited Smith News in Beeston as part of scheme to encourage businesses to be more proactive on delivering health messages to their employees.

Everyone Health ChangePoint is a commissioned service by Notts County Council to deliver FREE Obesity

Prevention and Weight Management Services throughout Nottinghamshire.

This includes, Child, Adult and Maternity services along with the promotion of healthy eating and physical activity initiatives in communities and schoolchildren.

**For more information on their services contact 0333 005 0092 or email [changepointnotts@everyonehealth.co.uk](mailto:changepointnotts@everyonehealth.co.uk)**



**everyone**  
**HEALTH**

## Tackling Food Poverty

Broxtowe Sure Start Children's Centres are tackling food poverty in the Borough for low-income families, who can find the school holidays a particularly difficult time, by offering a Holiday Kitchen in Stapleford and Eastwood.

The Holiday Kitchen provides a programme of meals and activities for children during holidays so that families can start the day right with a healthy breakfast, work together to prepare a nutritious hot lunch and enjoy time together as a family.

Research shows that poor nutrition, combined with the social isolation, emotional, financial and family stress families can experience can undermine children's readiness for school, cognitive functioning and social integration.

The sessions were funded by the Broxtowe Partnership Healthy Lifestyles Fund.



*Two year old Lilly-Mae Graham enjoys a tasty lunch at the Holiday Kitchen*

"I have found the course a brilliant experience. It has meant my child has been able to play with the fantastic staff and grow in confidence before starting school. For me, it has given me some confidence and I was made to feel welcome, not just be a dad. It has given me some drive and a new found sense of worth that I can perhaps contribute to society,

and not allow my depression to be all encompassing" said one parent who attended.

**For more information, contact Andy White at Nottinghamshire Children and Families Partnership on 07970 815 351**

## Family Festive Fun Community Event

A host of community and Christmas activities will be on offer on Tuesday 6th December from 10.00am until 2.00pm at Middle Street Resource Centre, Beeston.

Activities include baby massage, information stands, Forest School, Christmas crafts, a Community Cafe, festive games, lucky dip, prize draw and more.

**Find out more by contacting Jayne Fletcher on 0115 917 3657 or email [jayne.fletcher@broxtowe.gov.uk](mailto:jayne.fletcher@broxtowe.gov.uk)**

# Broxtowe Borough Council

## Useful addresses and telephone numbers

### COUNCIL SERVICES

Council Offices & Town Hall  
Foster Avenue  
Beeston, NG9 1AB

Kimberley Depot  
Eastwood Road, Kimberley, NG16 2HX

**All above offices**  
**Tel 0115 917 7777**  
**www.broxtowe.gov.uk**

### COUNCIL HOUSING REPAIRS

Daytime and out of hours  
**Tel 0115 917 7777**

### OTHER USEFUL SERVICES, ADDRESSES & TELEPHONE NUMBERS

Citizens Advice Broxtowe  
Council Offices  
Foster Avenue, Beeston NG9 1AB  
**Tel 0844 499 1193**  
**bureau@eastwood.cabnet.org.uk**

Citizens Advice Broxtowe  
Library & Information Centre  
Wellington Place, Eastwood NG16 3BG

**Tel 0844 499 4194**  
**bureau@eastwood.cabnet.org.uk**  
**www.citizensadvice.org.uk**

Age UK  
**0800 169 6565**

Consumer Direct  
**08454 040506**

NHS Advice  
24 hour Nurse & Health Advice  
**Tel 111**

Nottinghamshire County Council  
**Tel 0300 500 8080**

Voluntary Action Broxtowe  
Oban House  
8 Chilwell Road  
Beeston, Nottingham NG9 1EJ  
**Tel 0115 917 8080**

Eastwood Volunteer Bureau  
Wellington Place (rear of Library)  
Eastwood, Nottingham NG16 3BG  
**Tel 01773 535 255**

The Helpful Bureau  
39-41 Church Street  
Stapleford, Nottingham NG9 8DB  
**Tel 0115 949 1175**

Nottinghamshire Police  
(Non-emergencies)  
**101**

Crime Stoppers  
**0800 555 111**

Sure Start Children's Centre, Eastwood  
**0115 993 9750**

D.H. Lawrence  
Birthplace Museum,  
8a Victoria Street,  
Eastwood, NG16 3AW  
**Tel 0115 917 3824**



Bramcote Leisure Centre  
Derby Road, Bramcote, NG9 3GF  
**Tel 0115 917 3000**

Chilwell Olympia Sports Centre  
Bye Pass Road, Chilwell, NG9 5HR  
**Tel 0115 917 3333**

Kimberley Leisure Centre  
Newdigate Street, Kimberley, NG16 2NJ  
**Tel 0115 917 3366**

**www.liberty-leisure.org.uk**

Contact your local councillor, all details available on the website at [www.broxtowe.gov.uk/yourcouncillor](http://www.broxtowe.gov.uk/yourcouncillor)

یہاں پر آپ کو بروکٹو بورو کونسل کے بارے میں مزید جاننے کے لیے 0115 917 7777 پر  
فون کرنے کی سہولت دی گئی ہے۔

如果您需要此傳單用其他的形式或文字寫成，請撥電話 0115 917 7777 與我們  
聯絡。

اگر آپ چاہتے ہیں کہ یہ لیفلٹ آپ کو اردو زبان میں مہیا کیا جائے  
تو براہ کرم ہمارے فون نمبر: 0115 917 7777 پر رابطہ کریں۔

If you need this leaflet in other formats or  
languages contact us on 0115 917 7777

**This document is  
available in large  
print upon request.**

### TYPETALK - TEXT DIRECT

Typetalk's purpose is to bring the benefits of the telephone network to deaf, deafblind, deafened, hard of hearing and speech-impaired people.

Managed from a state-of-the-art centre, Typetalk's highly trained operators understand the special requirements of its customers and provide a warm, friendly service in complete confidentiality.

For Broxtowe Borough Council telephone **18001 0115 917 7777**.



### Follow Broxtowe with social media

Keep up-to-date with the latest Council news, jobs and activities in your area by following Broxtowe Borough Council on your favourite social networking sites or sign up to the email alerts.

[www.broxtowe.gov.uk/socialmedia](http://www.broxtowe.gov.uk/socialmedia)



**Broxtowe  
Borough  
COUNCIL**

Broxtowe Borough Council  
Town Hall, Foster Avenue,  
Beeston, Nottingham, NG9 1AB  
Tel 0115 917 7777 or  
Fax 0115 917 3030  
**www.broxtowe.gov.uk**

South Nottinghamshire  
Community Safety Partnership  
0115 917 3492  
**www.sncsp.org.uk**

Broxtowe Borough Partnership  
Tel 0115 917 3492  
**www.broxtowepartnership.org.uk**



**www.broxtowe.gov.uk**