



Annual Performance

2016-17

Highlights

£7.5 million investment

purchase of freehold interest of Beeston Square now generating over £0.5 million of annual rental income and enabling Phase 2 of redevelopment



Broxtowe Country Trail opened providing **27 miles of walking and cycling routes** connected to the Erewash Valley Trail

Toton announced as the preferred location for the **East Midlands HS2 hub station**, bringing estimated benefits of between £1.1 - £2.2 billion per year to the region through additional job opportunities, improved local connectivity to key cities in the north and London, investment in infrastructure to support growth and connectivity and well integrated, high quality housing.

Broxtowe Community Safety partnership continues to be amongst the **top performing** in its comparable family group in relation to levels of crime and disorder



Ruth Hyde OBE
Chief Executive



Councillor
Richard Jackson
Leader of the Council

This report aims to give you a flavour of what we have been doing to implement the first year of our Corporate Plan 2016-2020.

Our priorities are Housing, Business Growth, Environment, Health and Community Safety and our aim is for **Broxtowe to be a great place where people enjoy living, working and spending leisure time.**



Establishment of **Liberty Leisure** – a new trading Company to deliver leisure, culture, sports and events at the heart of the community and promote active lifestyles, supported by investment of £700,000 to improve facilities in 2016/17. This initiative is **saving £312,000** annually.

Continued progress on our ambitious, affordable house building programme to **build 300 homes** over 5 years using surplus land and partnerships with Housing Associations including innovative dementia friendly bungalows



Achievements

Find out more about our achievements and how our services have been externally recognised over the next few pages

Highlights

a flavour of what we have been doing to implement the first year of our Corporate Plan 2016-2020



Housing

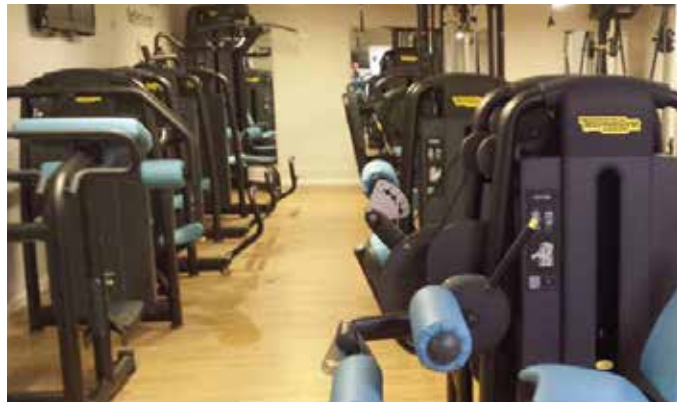
A good quality affordable home for all residents of Broxtowe

100 private rented tenancies

engaged to support housing need and 38 empty homes brought back into use.

515

Council properties have benefitted from modernisations to their kitchens and bathrooms.



Free swimming

for under 17's and free summer activities in school holidays

Support for Mental Health thanks to a new Mental Health Worker and projects with MIND and Citizen's Advice and support for those with alcohol and substance misuse problems thanks to work with "Change Grow Live"

9 Neighbourhood Plans

being developed led by local people in nearly every area to ensure that development corresponds to the needs of the community



923

new homes have been given planning permission



Health

people in Broxtowe enjoy longer active and healthy lives

New sporting challenges and fitness classes to encourage residents to keep fit resulting in

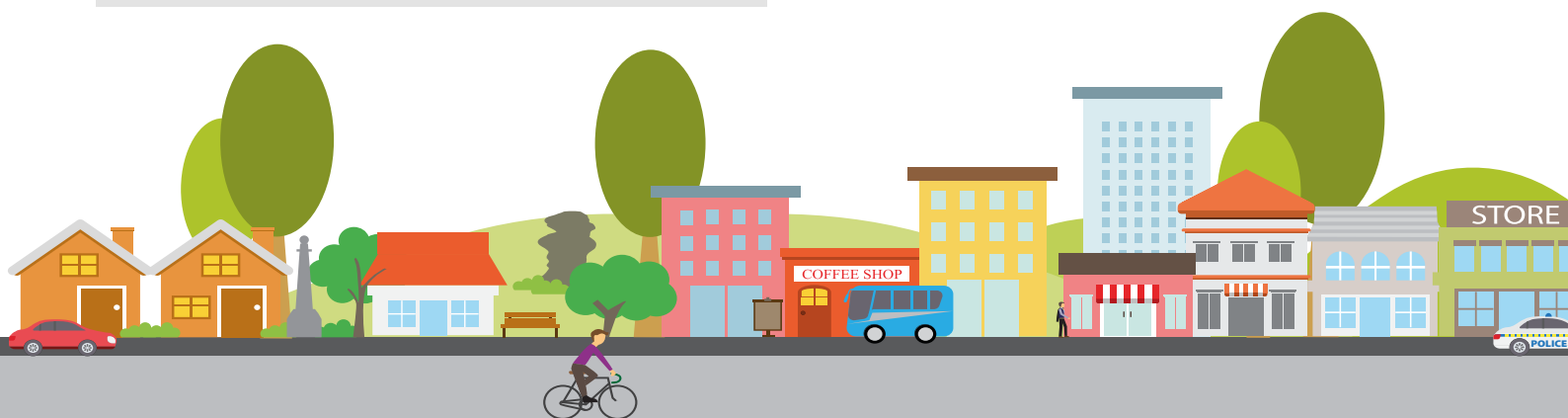
1,711,677

visits to our leisure centres in 2016/17



New

businesses signed up to the Healthy Options Takeaway Scheme and work with "Changepoint" to help people with weight management issues





Environment

The environment in Broxtowe will be protected and enhanced for future generations

Community engagement clean up events in our parks and housing schemes to keep the Borough tidy

New Fly Tipping and Litter Action Plan targeting hot spots in the Borough



Refurbished play areas and new play equipment at Coronation Park, Eastwood, Beeston Fields & Ilkeston Road Recreation Grounds and at Long Lane, Attenborough



Business Growth

New and growing businesses providing more jobs for people in Broxtowe and improved town centres



Free Wi-Fi in Stapleford and Stapleford Gateway scheme under way to improve the town centre

Increased **free car parking** in town centres and a new car park at the former Beeston fire station

Consultants engaged to develop plans for the **regeneration of Beeston** town centre

Town Teams supported to increase trade and attract new customers, our town centres having above better than the average vacancy rate.



Community Safety

Broxtowe will be a place where people feel safe and secure in their communities

Closure Order and Emergency Prohibition Order used as part of new measures to address anti-social behaviour issues affecting our residents

Public Space Protection Orders designated in Beeston town centre, Beeston North, Toton, Kimberley and Eastwood to control alcohol consumption in public areas

6 high risk domestic violence victims supported with protective measures

Training and awareness projects for front line staff on domestic violence delivery of projects to educate young people on internet safety and healthy relationships

New free surgeries offering legal help and advice for the victims of domestic violence



External recognition for good service delivery

- “Green” accreditation from “Investors in the Environment” - the highest award in the scheme

- Five parks re-accredited with **Green Flag** status, including 10th consecutive year for Bramcote Hills Park, Parks Team also named as finalists in Best Performer Category at the APSE Awards



- Housing Repairs Team shortlisted as finalists for **Most Improved Performers** in Building Maintenance at the APSE Awards
- **Re-accreditation** through National Inspection Council for Electrical Installation Contracting (NICEIC) demonstrating high levels of service offered by the in-house electricians
- Nottinghamshire **Best Bar None Scheme** highly commended at national level for Best New Scheme and Most Innovative Scheme

- **RSPCA Bronze Footprint award** retained by the Council’s Neighbourhood Wardens



- Partnership project with United Living and Central College to provide 100 work experience placements and improve tenant engagement won the **Training Award** at the Building Communities Awards and named as a finalist in the Excellence in the Contractor Engagement category at the TPAS awards



- Kimberley Leisure Centre Lifeguard was named **top female lifeguard in the UK** for the second year in a row. The Leisure Centre itself came second overall against 38 other facilities in the UK

- Housing Repairs Team granted “**Worcester Approved Service Provider**” in acknowledgement of the skills and quality of service delivered by the in house gas team. Taking the service back in house saved £150,000 during 2016/17

- D.H. Lawrence Museum received a certificate of excellence from **TripAdvisor** and named a **Hidden Gem** by VisitEngland thanks to a 97% customer service score

- A Council tenant won the **Colin Smith Memorial Prize** for outstanding tenant participation in the East Midlands

- HS2 emerging growth plan won “**Plan of the Year**” in East Midlands RTPI Planning Awards

- Housing Team shortlisted for **three awards** in the **Building Communities Awards** – Corporate Responsibility, Team of the Year and Tenant of the Year



- A Council Officer received a **Police Recognition Award** for his role in helping to prevent a man from committing suicide on the M1 Motorway

- Liberty Leisure won “**Sporting Project of the Year**” for the Get Active team’s project #Broxtowegirlscan at the Nottinghamshire Sports Awards

