

Beeston Town Centre Development Phase Two

The masterplan for Beeston's town centre development will:

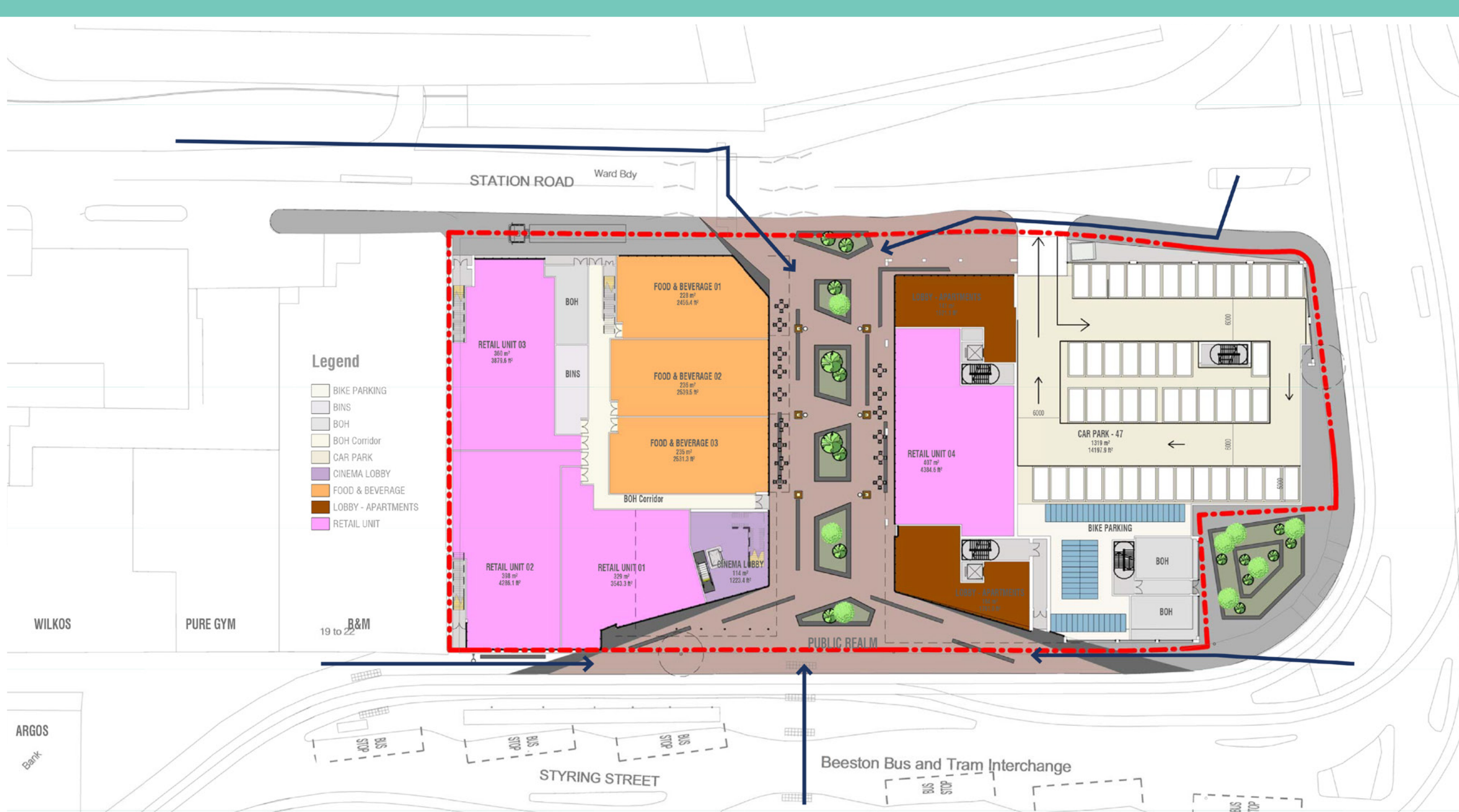
- Create a vibrant new hub in Nottingham's biggest suburb with homes and leisure facilities
- Create more outdoor space for people to enjoy
- Bring a greater choice of food and drink venues to Beeston
- Give people living in Beeston more entertainment activities closer to home
- Offer an alternative night-time destination that is a short bus or tram ride away



The residential building will have varied floor levels and will create 120 new homes



The aerial view highlights the U-shaped building design and central courtyard area



The ground floor buildings consist of four retail units, three units for food and drink venues, lobby areas for residents and parking bays



The upper floors include cinema screens, and separate one-bedroom and two-bedroom apartments in the residential building



Nick Ferris
T: 0113 235 5219
E: nick.ferris@eu.jll.com



Will Torr
T: 0115 979 3491
M: 07866 716 974
E: wtorr@heb.co.uk

