



# Broxtowe matters

June 2018

## In this issue



**Pride In Our Parks**  
Page 9



**Supporting Broxtowe  
Businesses**  
Page 18



**Broxtowe Leads the  
Way on Water Safety**  
Page 21



## Broxtowe Remembers

In 2018, people across the world will mark the 100 year anniversary of the end of the First World War and there are lots of commemorative events taking place here in Broxtowe.

This year also marks the centenary of the Chilwell Munitions Disaster, where an explosion killed over 130 people at the Chilwell Shell Filling Factory. Unidentified remains were laid to rest at St Mary's Church in Attenborough which is being refurbished with a new memorial to mark the centenary. Read more on page 4.



# Local care from a local company

Call us on: **0115 9226116**

[www.homeinstead.co.uk/nottingham](http://www.homeinstead.co.uk/nottingham)



Home Instead Senior Care, is an award-winning local company specialising in providing care to people in their own homes. The company opened its office in Nottingham nearly six years ago and provides a full range of services to help people of all ages remain independent.

Recommended highly by the Care Quality Commission for their level of quality service and positive client testimonials. Home Instead delivers care to clients across Nottingham with a wide range of needs. Caregivers have practical experience in supporting clients with conditions such as Alzheimer's, Parkinson's and Diabetes.

The Home Instead Senior Care service allows people to remain at home and lead an independent life. From a few hours a day, up to 24 hours 7 days a week we provide a full care service to match the needs of the individual.



Debbie Greenham, a winner at the Nottingham Post Carer of the Year Awards.



## Services include:

- Companionship
- Light Housekeeping
- Local transportation & errands
- Meal preparation
- Respite support
- Convalescence support
- Shopping
- Personal care
- Specialist dementia & Alzheimer's care and much more...



## CAREGiver of the Year Awards

We are very pleased to announce that our Award for CAREGiver of the Year 2017 has gone to John Cunliffe. John was also nominated as the New Professional Carer of the Year at the Nottingham Post 2018 Care Awards. A very close runner up was Tracey Ehlers.

John has worked with Home Instead for two years and has developed into an outstanding member of our team.

John has also been praised by other CAREGivers as somebody who is always willing to help and provide encouragement. He has helped immensely when we have faced emergencies and challenges by stepping forward and covering additional visits.

Tracey has got some very special qualities and Clients tell us about her gentle manner and supportive nature. Like John, Tracey supports other CAREGivers and is always willing to help when we have a need.

Tracey is highly reliable and nothing is too much trouble for her. She demonstrates exceptional communication skills and is consistently showing empathy and respect for all of her clients.

We are proud of our achievements and especially proud and fortunate to have people such as John and Tracey working for Home Instead Nottingham.

## Dementia Friendly Communities - Workshops

Research suggests that Dementia affects each individual in different ways however, even at late stages a person can understand what is going on around them. This in turn means that many people with Dementia can continue to live a relatively "normal" life as long as there is adequate support available, not just at home but in the community. This is where Dementia friendly communities can play a major part.

The concept is simple: to improve the quality of life for people with dementia and help them to become active members of the community.

At Home Instead in Nottingham, we have developed a comprehensive training program for our CAREGivers which covers all the aspects of Dementia and provides practical advice and techniques to help those suffering from the disease to continue to enjoy a good quality of life.

Part of this training is now being delivered as **free workshops for families of those suffering from Alzheimer's and other Dementias or anybody who would like to find out more about the disease.**

If you would like to attend one of our seminars please contact us on **0115 9226116** or email: [primo.sule@homeinstead.co.uk](mailto:primo.sule@homeinstead.co.uk)



We are looking for CAREGivers who can help us to assist people with non-medical services including Companionship, Home Help and Personal Care in their own home.

Please call **0115 9226116**

email to [recruitment.nottingham@homeinstead.co.uk](mailto:recruitment.nottingham@homeinstead.co.uk)





## Getting in touch

**Web** visit [www.broxtowe.gov.uk](http://www.broxtowe.gov.uk) to pay and apply for services online

**Email** [customerservices@broxtowe.gov.uk](mailto:customerservices@broxtowe.gov.uk)

**Call** 0115 917 7777 other useful contacts on the back cover



/broxtoweboroughcouncil



@broxtowebc



/BroxtoweBC



## Never miss out

Stay up to date by signing up to our free email newsletters and choose what you want to be kept informed about.

Sign up now at [www.broxtowe.gov.uk/emailme](http://www.broxtowe.gov.uk/emailme)

**Editorial:** Broxtowe Borough Council's Corporate Communications Team

**Design and Print:** Systematic Print Management

**Distribution:** Royal Mail

**Cost:** 18p per copy

Broxtowe Matters is printed on environmentally friendly paper, please recycle it after reading.

**Advertising** is sourced by Spot On Media Ltd and the Council does not endorse any of the products or services advertised.

**We welcome your comments and views – just get in touch at [press@broxtowe.gov.uk](mailto:press@broxtowe.gov.uk) or call 0115 917 3825.**

## Also in this issue...

Community News  
P4



Community Safety  
P16



Environment  
P9



Business Growth  
P18



Annual Performance  
P12-13



Health  
P20



Housing  
P14



# Housing is a top priority for Broxtowe Borough Council and we're working hard to provide for the needs of current and future residents.

The 2017/18 financial year has seen a welcome increase in house building rates in the Borough. During the last year, 324 houses have been built, which is our highest since the financial crash in 2008. The rate of planning permissions for new housing development has also increased, with 1098 permissions for houses granted.



*Ruth Hyde OBE  
Chief Executive*

The government has supported applications for house building in our area by giving £1m of funding for new houses in Eastwood and we have been shortlisted for significant



*Richard Jackson  
Leader of the Council*

new funding support for the development of the network of "garden villages" at Chetwynd Barracks and near the proposed location of the HS2 hub station at Toton. This means the future for house building looks positive.

The Council is commissioning a new affordable house-building delivery plan to help us to increase the number of affordable homes available. We are making the most of the opportunity we have to cater for the diverse needs of our community – we are currently planning to develop more dementia-friendly bungalows which have been so well received in different parts of our Borough.

In addition to this, we continue to work hard to prevent homelessness – during 17/18 our homeless prevention team prevented 333 people from becoming homeless by giving advice and practical help.

Over the coming months we will continue to work hard with partners to build on the progress we've made so far and make Broxtowe a great place to live, work and spend leisure time.



# Broxtowe Remembers



In 2018, people across the world will mark the 100 year anniversary of the end of the First World War and there are lots of commemorative events taking place here in Broxtowe.

## Events

- A Freedom Parade and service will take place in Kimberley on 30th June – visit [www.broxtowe.gov.uk/freedomparade](http://www.broxtowe.gov.uk/freedomparade) for details.
- Commemorations to mark the Chilwell Munitions Tragedy will take place on 1st July at St Mary's Church in Attenborough. Read more below.
- Streams of poppies have been planted at Hall Om Wong Park in Kimberley, King George V Park in Bramcote and Mansfield Road Recreation Ground in Eastwood which when in flower will be a poignant visual memorial to those who lost their lives



- Remembrance Parades will take place across the Borough in November



You can view other events on our events calendar at [www.broxtowe.gov.uk/wow](http://www.broxtowe.gov.uk/wow) or contact your local Town and Parish Council.

## Book of Remembrance

Share your memories of loved ones who were alive during wartime or leave your thoughts and messages of remembrance in our online Book of Remembrance at [www.broxtowe.gov.uk/worldwaronecentenarybook](http://www.broxtowe.gov.uk/worldwaronecentenarybook)

We'd also love to see your photos and hear your stories – send them to [press@broxtowe.gov.uk](mailto:press@broxtowe.gov.uk)

## Nottinghamshire Great War Roll of Honour

Visit the Roll of Honour at [www.nottinghamshire.gov.uk/rollofhonour](http://www.nottinghamshire.gov.uk/rollofhonour) to search by name and location, or select to view people who died 100 years ago today.



## Chilwell Munitions Disaster

This year is also the centenary of the catastrophic explosion at the Chilwell Shell Filling Factory on the evening of 1 July 1918 when over 130 people died, including 25 women factory workers, the so-called 'canary girls' whose skin had turned yellow from the effects of handling toxic material.



To commemorate the explosion, there will be exhibitions and several events both in St Mary's Church and at Chetwynd between 20th June and 1st July. Tickets should be secured by 16th June. Most tickets are free but some are ticketed due to demand.

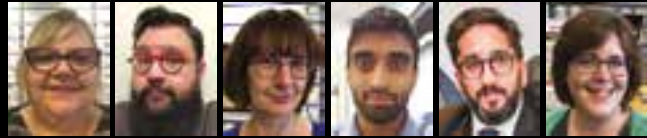
To find out more about the events, including walks, talks, concerts and a family picnic, please visit [bit.ly/ChilwellExplosion](http://bit.ly/ChilwellExplosion) or contact St Mary's Church on 0115 925 9602 or email [office@attenboroughchurch.org.uk](mailto:office@attenboroughchurch.org.uk). To contribute to the cost of a new memorial to the explosion victims, visit [bit.ly/ExplosionMemorial](http://bit.ly/ExplosionMemorial)





# JOHN FLYNN OPTICIAN ESTD.1938

JOHN FLYNN  
OPTICIANS IN BEESTON • NOW OPEN ON SATURDAYS



- ✓ Do you want to see the **same** Optometrists & Staff every time?
- ✓ Do you want to be seen by **UK Optician Award Finalist Optometrist 2018?**
- ✓ Do you want to be known as a name and not a number when you visit the Opticians?
- ✓ Do you want to see the most individual, fashionable and independent frames with the finest optical quality ophthalmic lenses from around the world?
- ✓ Do you suffer from **Dry Eyes** or **Blepharitis?**



CLINICAL EYEWEAR - QUALITY EYEWEAR



Dr. Janjua

**Director and senior Optometrist at John Flynn Opticians, Sheeraz Janjua was recently awarded the degree of Doctor of Optometry from Aston University for his research in Dry eye syndrome. Doctor Janjua is one of only 25 Optometrists in UK with this qualification. Having been at the helm in Beeston since 2016 and leading a small team of Optometrists, this**

**year he has been shortlisted for the prestigious award of Optometrist of the Year 2018. There are over 14,000 Optometrists in the UK and he has been included in the final 4. The winner will be announced at a black tie event in Birmingham very soon.**



Supported by longstanding staff the new services have been introduced including dry eye and blepharitis appointments and treatment plans with Optometric eye testing software - same as that used at the prestigious Moorfields Eye Hospital and Great Ormond Street Children's Hospital. Doctor Janjua takes great pride in what he calls **precision calculation of spectacle prescriptions** - using techniques honed over twenty years in optometry.

The practice dispenses specialist spectacles, tints and coatings which can help people with **macular degeneration (AMD)** and other visual impairments.

The practice continues to advise and provide a clinically **enhanced** eye examinations and complete eye health checks; using an OCT instrument to produce a macular, retinal and optic nerve scans to aid early diagnosis of various ocular conditions.

Established in Beeston, Nottingham over 70 years ago, John Flynn Opticians is located on the corner of the leafy Devonshire Avenue and Chilwell Road. The aim is to create a warm and welcoming environment within the traditionally furnished surroundings.

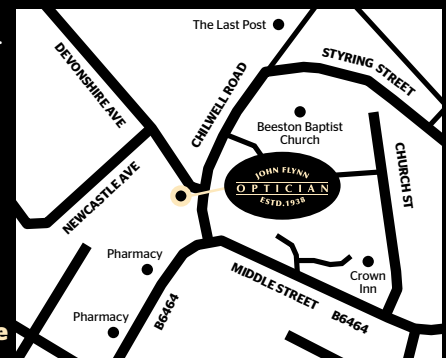
Emphasis is placed on personal service, correctly fitted frames and accurately dispensed ophthalmic lenses by exceptional manufacturers such as **Carl Zeiss, Nikon, Seiko, Rodenstock, Essilor, Hoya and many other superior independent lens suppliers.** The team are genuinely passionate about providing the best possible product for the needs of the client. The largest range of quality independent eyewear such as **Etnia Barcelona, Face a Face, ProDesign, Salt, Silhouette and Woow**, and sunglasses such as **Ray-Ban, Oakley and Maui Jim** are stocked.

In a market dominated by larger optical groups here is a practice dedicated to providing patients with a reassuring, individual and professional service. Indeed, Dr. Janjua advocates the following guidance **"The prescribing and dispensing of spectacles are very closely linked and it would be in your best interests to have your spectacles dispensed where you had your eyes examined. It is more difficult to resolve problems you may have with your spectacles when prescribing and supply are separated."** The College of Optometrists, which is the professional, scientific and examining body for optometry in the UK working for the public benefit, has issued this advice regarding your spectacle prescription.

The practice also offers a contact lens fitting and aftercare service. Contact lenses have never been more affordable since the launch of the monthly 'Eyeplan'.

Now open all day Monday to Saturday. Off street parking is available in the practice's own car park.

John Flynn Opticians welcomes the registration of new patients. The practice is open from **Monday to Friday from 9am to 5:30pm. Saturday 9am-5pm. Telephone 0115 9255051 to make an appointment.**



1a Devonshire Avenue, Beeston, Nottingham NG9 1BS enquiries@johnflynnopticians.co.uk www.johnflynnopticians.co.uk



0115 925 5051





## Bowls of Fun

It's fun, enjoyable and suitable for all ages and abilities. No previous experience is necessary and there are Bowling Greens across the Borough for use between May and September.

Visit [www.broxtowe.gov.uk/bowlinggreens](http://www.broxtowe.gov.uk/bowlinggreens) to find out more.

## Jackie - A day in the life of a Citizen's Advisor



Ever thought about volunteering for Citizens Advice? Jackie has been volunteering as an advisor with the Broxtowe branch for five months.

She says:

"The office banter is amazing (when you have the luxury of time to get involved in it between seeing clients). The sweet treats, which are constantly available, are always welcome.

The variety of the role is exciting and challenging; from the moment I walk into the office, via the waiting room full of clients waiting in anticipation for an answer to all their queries, to the moment I leave (with a sense of satisfaction – mostly).

The number of clients I see in a 3 hour session varies greatly, as do their needs, which can range from; 'what benefits am I entitled to?' 'Can my landlord evict me' to 'can you help me to fill this probate/PIP/ mandatory reconsideration form'?

Mandatory Reconsideration? I'd never even heard of one prior to becoming an advisor, let alone help someone to complete one!

I'm never daunted by the ever expanding variety of needs, as there is always, without exception,

someone in the office who is more than willing to help and assist.

I absolutely love the role and only wish I'd started it years ago."

**If you would like to talk to us about volunteering opportunities with Broxtowe Citizens advice please ring Sam on 01773 768 363 or email [samantha.busuttil@broxtowe.cab.org.uk](mailto:samantha.busuttil@broxtowe.cab.org.uk)**



**VOLUNTEERING**

## Beeston Square Phase 2 Development



Following public consultation, a Planning Application was due to be submitted in May for the Phase 2 Development of Beeston Square which will include a cinema, cafes and bars and around 100 new homes.

If planning permission is granted and the financial arrangements are concluded, work is expected to start in 2019 on the development, which will help revitalise the town centre and develop a thriving evening economy.



# Budget Set For 2018/19

**The Council set its budget for 2018/19 in March and good news for residents – there's no increase in the Broxtowe element of your Council Tax.**

The budget also protects public services, introduces a 1% rent reduction for Council tenants and sets aside funding for exciting projects like Beeston Square Phase 2 redevelopment, important community events to commemorate the end of the First World War and Remembrance Day Services and £0.5 million worth of improvements to parks and open spaces over the next two years.

Local authorities across the Country are continuing to face significant budget challenges and Broxtowe is no exception. Putting together proposals was tough as we prepare for Government to phase out the grant it provides to Councils altogether by the end of 2019/20.

Consultation responses from the Budget Consultation helped inform decision-makers.



## Local Plan Update



Broxtowe's Part 2 Local Plan will allocate land for new development and will contain policies which will influence how decisions on planning applications are made. The latest stage of consultation took place between September and November last year.

We received a lot of responses to the consultation and these were reported to the Jobs & Economy Committee in December. The Committee decided to make two changes to the Plan about two areas of land in Greasley and Beeston Rylands.

The consultation responses will be considered in more detail and once agreed by Full Council, will be submitted to the Government to be examined by an Independent Inspector.

For more information, visit [www.broxtowe.gov.uk/planning](http://www.broxtowe.gov.uk/planning)

## Community Celebration Group - could you help?



The Broxtowe Community Celebration group is looking for new members:

- To volunteer and/or join as a member
- To share and celebrate diversity through culture, language, music, dance & food
- To enable cross-cultural events to take place throughout the year in the Borough of Broxtowe

For more information please contact Andrea on [andrealucyh@yahoo.co.uk](mailto:andrealucyh@yahoo.co.uk)



**VOLUNTEERING**





# Beeston and Chilwell Garden Trail comes of Age!



Beeston and Chilwell Garden Trail is celebrating its 21st birthday this year, with 19 gardens opening on Saturday 9th and Sunday 10th June. A grand opening is planned at Trent Vale Infants School.

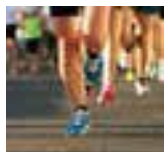
The annual event sees local people in Beeston and Chilwell open their gardens to visitors for a small fee and all money raised goes to various charities nominated by the gardeners. The Trail is a great opportunity to get ideas, with the gardens coming in all shapes and sizes, some with refreshments, plant sales, entertainment or activities for families to enjoy.

Last year over 800 people visited raising over £5,000. Find out more at [www.beestonandchilwellgardentrail.org.uk](http://www.beestonandchilwellgardentrail.org.uk)

## Get Active with L Leisure

Challenge yourself, your family or your friends in our cycling, running and swimming events for juniors and adults. We've got events suitable for beginners and those with more experience.

Sponsored by **Sandicliffe**



**Kimberley Triathlon**  
Sunday 10th June from 7:00am  
Are you up for the challenge.... to swim, bike and run? Beginner, Go Tri Family and Sprint triathlon races.

### Bramcote 5K and 2k Family Fun Run

Friday 6th July from 6:30pm  
Run, jog, plod or walk...around Bramcote Park Hill

### Moorgreen Duathlon

Colliers Wood, Sunday 14th October from 9:00am  
How fast can you go? Run, cycle, run event. Challenge and beginner distances, Individual and team races.

To book [www.lleisure.co.uk/events](http://www.lleisure.co.uk/events)

## Broxtowe Summer Events 2018



### Hemlock Happening

Saturday 9th June  
1:00 - 6.00pm  
Bramcote Hills Park,  
NG9 3JT

### Beeston-on-Sands

28th July – 1st September  
10:30 – 6.30pm daily  
Old Bus Station, Beeston



### Eastwood Play day

Tuesday 7th August  
12:00 – 4:00pm Coronation  
Park, NG16 3LQ

### Stapleford Play day

Thursday 9th August  
12:00 – 4:00pm  
Ilkeston Road Recreation  
Ground, NG9 8JL

### Party in the Park

Saturday 11th August  
12:00 – 5:00pm  
Broadgate Park, Beeston,  
NG9 2EF

### Mini Reel (Outdoor cinema)

Monday 13th – Friday 17th  
August, Variety of locations  
in Broxtowe

### Reel Outdoors (Outdoor cinema)

Friday 17th August  
Broadgate Park, NG9 2EF

### Centres:

Active holiday programmes at Bramcote Leisure Centre, Chilwell Olympia and Kimberley Leisure Centre will take place throughout the summer school holidays.

## FREE SWIMMING



For young people age 17 years and under with a valid LLeisure card during the school holidays, from Thursday 26th July to Monday 3rd September at Bramcote and Kimberley leisure centres. Terms & Conditions apply





# Pride In Parks



£0.5 million investment over the next two years. £125,000 will be allocated to making improvements to Council owned play areas which have been identified as high priority sites in the Council's Play Strategy. Funding bids have also been made to supplement the investment by the Council.

Park improvements this year will take place at:

- Broadgate Park, Beeston
- Leyton Crescent Recreation Ground, Beeston
- Jubilee Park, Eastwood
- Millfield Road Open Space, Kimberley
- Redbridge Drive Open Space, Nuthall
- Central Avenue Recreation Ground, Stapleford
- Salcey Drive Open Space, Trowell

The other £125,000 will be shared amongst those Town and Parish Councils in the Borough who maintain their own parks to help improve their facilities.

An additional £250,000 has been set aside for further improvements in 2019/20.

## Colliers Wood

Summer 2018 will see the installation of two Pit Shaft winding wheels, along with picnic tables to create an area that can be used for a range of outdoor community activities. The winding wheels will be a prominent feature and a reminder of the site's industrial heritage. The project has been funded by Waste Recycling Environmental (WREN), Caunton Engineering and The Friends of Colliers Wood.

### Tell us about your local park and open space

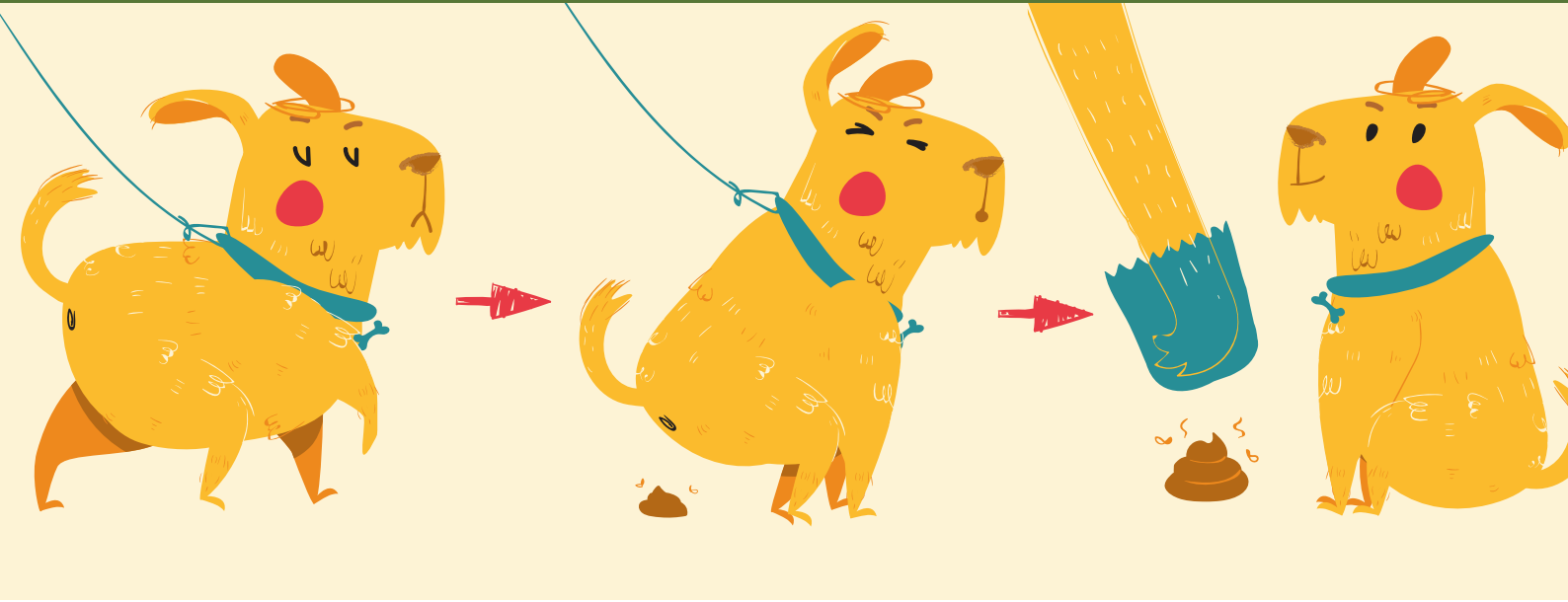
Since 2014, the Council has been consulting on the quality and standard of its parks and open spaces as part of the Broxtowe Parks Standard. This summer we are looking to see if things have changed and are looking for comments on a selection of parks/open spaces. Tell us via our online survey at [www.broxtowe.gov.uk/parkssurvey](http://www.broxtowe.gov.uk/parkssurvey).

**Find out more about the Borough's Parks and Open Spaces by visiting [www.broxtowe.gov.uk/parks](http://www.broxtowe.gov.uk/parks)**





# Scoop that poop!



Here in Broxtowe, we have pride in our local area so we're stamping down on those who fail to scoop the poop.

Dog mess contains lots of parasites which can be harmful to humans and can even cause blindness in extreme cases. It's also unpleasant for other local people to see and step in when they're out and about in the Borough.

## Your responsibilities

Under the law, it is the responsibility of the dog owner or person in charge of a dog to clean up any dog mess left by their dog. This applies to all public open land in the Borough.

If you don't, you could receive a fixed penalty notice of £50 and a penalty of up to £1,000 if you do not pay.

If you scoop your dog's poop but don't put it in the bin (e.g. throw it in a hedge or tree), you can face an additional fine for littering, which carries a fixed penalty notice of £75 or a maximum fine of £2,500.

There's over 13,000 bins in Broxtowe Borough in which your dog waste can be disposed of so there's no excuse – pack those poo bags before you set off on your walk and make sure you bin it.

## Poop facts

- There's an estimated **eight million dogs** in the UK producing 1,000 tonnes of dog poo each day – that's as much as 148 elephants, 24 humpback whales or three Boeing 747 jets.
- **£22million a year** is spent on dog waste collection by local authorities in England and Wales.
- Dog mess can contain parasites including hookworms, ringworms and tapeworms. Some of these can cause diseases in humans, most notably *Toxocara canis*, which can cause blindness.

If you would like to make a dog fouling complaint, please report it to the Neighbourhood Wardens on 0115 917 77777, [neighbourhood.wardens@broxtowe.gov.uk](mailto:neighbourhood.wardens@broxtowe.gov.uk) or on our Love Broxtowe website at [www.broxtowe.gov.uk/lovebroxtowe](http://www.broxtowe.gov.uk/lovebroxtowe)







# Be part of our big Broxtowe Recycling Team

We're all part of one big Broxtowe recycling team so we need your help to recycling more. 15% of waste put in the black bin could actually be recycled and the more we recycle, the more we can help protect the environment for our children, grandchildren and future generations.

## Know your plastics

| Recycle   | Can't recycle  |
|---|--|
| Plastic bottles (any size or shape)<br>Yoghurt pots and margarine/butter tubs | Any other types of plastic including fruit and meat trays, ready meal trays, plastic bottle tops, plastic bags, plastic toys, plastic tubes and plastic wrap |

## Single Use Plastics



Single use plastics are getting a lot of attention and rightly so. The Council is committed to reducing its plastic and is taking measures to reduce the amount of plastic

used in our activities including plastic bags used in our frontline services and considering alternatives to plastic where they are available.

We can all make a difference and reduce the amount of plastic which is simply discarded. Here are five quick tips:

- 1 Work out what plastic you really need
- 2 Avoid excessive food packaging
- 3 Swap disposable for reusable
- 4 Say no to plastic straws
- 5 Use refill stations



## Glass Recycling

During 2017/18, Broxtowe Borough residents recycled nearly 1,700 tonnes of glass through the kerbside collection scheme. This is a fantastic achievement so thank you to everyone for helping us to recycle more.



**Please remember:** We can only collect glass that is in either a red-lidded bin, which can be purchased from the Council, or in your kerbside glass bag. You can have up to four kerbside glass bags and can order additional bags at [www.broxtowe.gov.uk/kerbsideglass](http://www.broxtowe.gov.uk/kerbsideglass)

**For more information about recycling, visit [www.broxtowe.gov.uk/recycling](http://www.broxtowe.gov.uk/recycling) or sign up to our email updates at [www.broxtowe.gov.uk/emailme](http://www.broxtowe.gov.uk/emailme)**

Broxtowe Borough Council

# DON'T FORGET - SIGN UP NOW

## For the 2018/19 GARDEN WASTE SERVICE

www.broxtowe.gov.uk/gardenwaste

# Highlights

a flavour of what we have been doing to implement the first year of our Corporate Plan during 2017/18.



## Housing

A good quality affordable home for all residents of Broxtowe



**120 new kitchens**, 58 new bathrooms, 246 external wall insulation, 85 new roof coverings, 48 new heating systems installed for Council tenants.

An **extra £65,000** to help those with long term health conditions keep their homes warm and insulated.

**333** homelessness cases prevented or relieved in 2017/18.

Progress made on **Neighbourhood Plans** with 10 designated and 1 submitted so far.



**1,098** new homes have been given planning permission with a further 324 built in 2017-18 – the highest number since 2008.



**88%** satisfaction rate with the Housing Service



## Business Growth

New and growing businesses providing more jobs for people in Broxtowe and improved town centres

Work is progressing on a **new car park** near Beeston station.



### Free Wi-Fi

in Stapleford has been introduced.



Over **£645,000** rental income received in 2017/18 following the purchase of the Beeston Square lease and significant progress made on the regeneration of the town centre.

Free health checks for businesses, jobs fairs and a jobs club in Eastwood have supported numerous people and local businesses.







# Environment

The environment in Broxtowe will be protected and enhanced for future generations

**Over £600,000** much needed income generated from the garden waste service.

**4 community litter picks** and over 500 new trees planted across various parks and open spaces.



## Improvements to parks and open spaces

including new Play Areas at Smithurst Road Open Space, Giltbrook and Broadgate Park, Beeston together with footpath surfacing and habitat improvements at Banks Road Open space Toton and Hall om Wong Open Space, Kimberley with £500,000 agreed for further improvements to parks and open spaces over the next two years.



**51%** of the Council's green space is Local Nature Reserve - the highest in Nottinghamshire.



# Community Safety

Broxtowe will be a place where people feel safe and secure in their communities

**44** drop ins and information sessions in Eastwood.

**Better regulation of street trading in Beeston**

White Ribbon accreditation for work to prevent domestic violence



**Public Space Protection Orders** to tackle anti-social behaviour including drinking alcohol in public places in Beeston, Eastwood, Stapleford, Kimberley, and Manor Park in Toton and car cruising at Chilwell Retail Park.

**12** car parks awarded "park mark" status.



# Health

people in Broxtowe enjoy longer active and healthy lives

New technology to help leisure centre members track, log and reach individual health and fitness goals and book classes.

**New Spa** at Bramcote leisure centre.

**3,372** children booked onto weekly swim lessons.

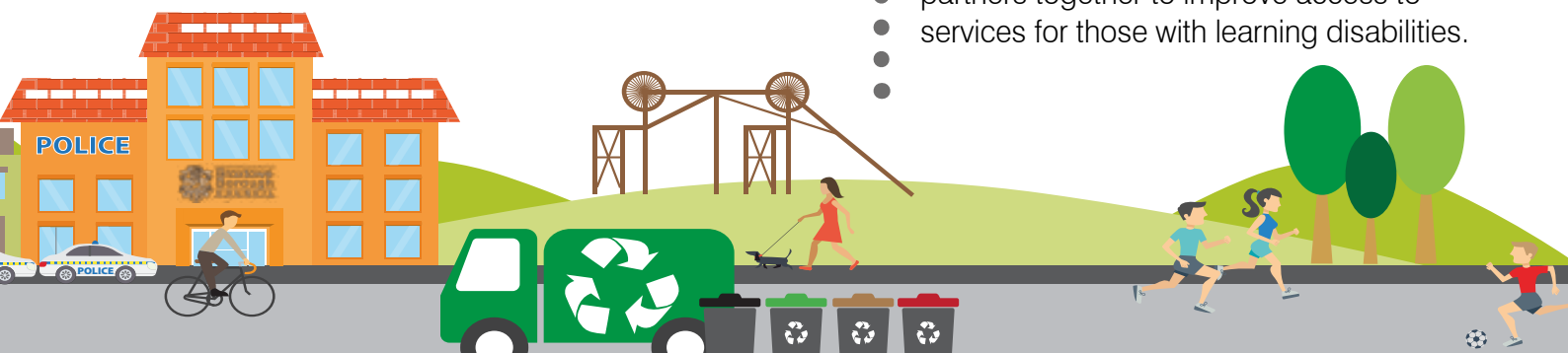


Creating a **stop smoking clinic** at the Council Offices and delivering Alcohol and Neuro-Psychoactive

Substance Brief Intervention Training workshops to partners.

Creating the **Broxtowe Learning Disability Network**

**Breastfeeding Scheme** to improve breastfeeding friendly venues which brings partners together to improve access to services for those with learning disabilities.





# Housing News

## New Legislation to Support Homeless People

New legislation came into effect earlier this year, giving local authorities new duties to help prevent homelessness.

In 2017/18, the Council managed to prevent 333 cases where people were threatened with homelessness.

The Homelessness Reduction Act places more emphasis on the assistance each Council in England can offer to those who have experienced, or are about to experience homelessness. This means that the Council gains greater powers to help prevent many more cases.

The act means:

- Councils will no longer make an initial assessment to consider if someone has a priority need or has made themselves intentionally homeless.
- The time period that Councils are able to provide preventative work for has been extended.
- A homeless application is registered for those who are eligible and every effort is made to prevent or relieve homelessness before a final decision is made.
- Where applicable, some applicants will continue to be provided with interim accommodation while alternative solutions to their situation are sought.

We're pleased to be able to deliver a more preventative approach to homelessness which will enable us to assist as many applicants as we can.

If you are homeless, or at risk of homelessness it is important that you contact the Housing Options team as soon as possible to arrange to see a Housing Advisor, who will provide you with housing advice and explain your options.

**You can contact the team on 0115 917 7777 or [hpls@broxtowe.gov.uk](mailto:hpls@broxtowe.gov.uk).**



## £1 Million Housing Land Investment Boost For Eastwood

The Government is backing plans for much-needed new housing in Eastwood after a successful bid for £1 million in funding by Nottinghamshire County Council.



The money, announced by Housing Minister Dominic Raab, is from the Land Release Fund (LRF) and will be used to prepare the site of the old Lynncroft School for around 200 new homes, subject to planning permission. The site is owned by the County Council.

LRF money is used to overcome barriers preventing new housing from being built on land which otherwise would be unusable for development.

**For more information please call Nottinghamshire County Council on 0300 500 8080 or email [enquiries@nottscc.gov.uk](mailto:enquiries@nottscc.gov.uk).**







## New Scheme for those Leaving Hospital

A new partnership between the Council, the NHS, Gedling Borough Council and Rushcliffe Borough Council is being piloted to help patients to be successfully discharged from hospital.

The NHS is required to take a new approach to hospital discharge. Patients will be discharged within 48 hours of being declared medically fit and patient care needs will be assessed once they have returned home.

The pilot scheme will use a community based Hospital to Home Co-ordinator to make links between the hospital discharge team and local Councils with available housing. In Broxtowe, we are planning for

the Hospital to Home Co-ordinator to be able to utilise available Retirement Living accommodation for use by hospital discharge patients.

The Housing Repairs Team will also assist by providing a Handyperson Service to undertake minor adaptations which will allow patients to be discharged from hospital.

The pilot scheme has been running in other parts of the County and has already been shown to improve hospital discharge in the South Nottinghamshire area.

**You can contact the team for support on 0115 917 7777 or [hllps@broxtowe.gov.uk](mailto:hllps@broxtowe.gov.uk).**



## Need a boiler repair or replacement?

Healthy Housing's new Boiler Repair and Replacement Scheme makes sure boilers are safe and working properly.

The big benefit to this scheme is that, if you are eligible, the Queen's Award-winning project will contribute towards the cost of the work.

This initiative is open to homeowners and private tenants within the city and county boundary. Call them on 0115 985 3009 or e-mail [healthy-housing@nottenergy.com](mailto:healthy-housing@nottenergy.com) to see if you qualify.

If your boiler is old or not working to its full potential, you can make considerable savings of up to £260 a year by simply upgrading to an 'A' rated boiler. It takes more energy to heat a home effectively with an inefficient heating system.

Healthy Housing's local accredited gas safe engineers are waiting to bring your boiler back to full health and efficiency.

**Find out more at [www.healthy-housing-service.com](http://www.healthy-housing-service.com).**





## Broxtowe Gains White Ribbon Accreditation

The Council has been awarded White Ribbon Campaign accreditation by White Ribbon Campaign UK.

The White Ribbon Campaign aims to end male violence against women. It promotes the message that men must never excuse, commit or remain silent about male violence against women.

Male violence towards women is shockingly prevalent, and we can only change society by promoting a message of respect and tolerance, and leading by example.



Council employees, elected members and partner organisations at Broxtowe have been working hard in order to raise awareness about the White Ribbon Campaign and domestic abuse in all its forms.

Over the next few years, the Borough Council along with its partner organisation have developed a two year action plan which includes:

- Raising awareness of domestic abuse services
- Providing support to victims
- Working with sports clubs and music venues
- Ensuring that all staff are aware of domestic abuse services.

**For guidance on all issues relating to domestic violence, including confidential contacts for help and support, visit [www.broxtowe.gov.uk/domesticviolence](http://www.broxtowe.gov.uk/domesticviolence)**



## Support For Victims of Crime

Nottinghamshire Victim CARE can support you if you've been a victim of crime. It provides free and confidential support aimed to assist a victim in recovering from their experience and to reduce the possibility of re-victimisation.

They also offer restorative justice, allowing victims to engage in communication with the offender responsible for their crime. Caseworkers are trained as 'Friends against Scams' through National Trading Standards and in situational crime prevention awareness. They are also able to offer advice with regard to online security.

Each victim is treated as an individual, with a support package in line with their individual needs. We undertake visits and drop-in sessions, regularly attending Middle Street Resource Centre in Beeston and Eastwood Library.

Victim Care are available between 8am and 8pm Monday to Friday, and between 9am and 5pm on Saturday on 0800 3047575 or by email [admin@nottsvictimcare.org.uk](mailto:admin@nottsvictimcare.org.uk).

**Further information can be found at <http://bit.ly/NottsVictimCARE>.**





# Meet your new Neighbourhood Policing Inspector



Inspector Simon Riley has taken over from Steve Wragg, as Neighbourhood Policing Inspector for Broxtowe. He says:

"I'm sure you would join me in thanking Steve for his efforts and in wishing him great success in his new role as a Detective Inspector on the County Division.

A little bit about me - I joined Notts Police in 1991 and have worked in a variety of roles across the force. I started out at Oxclose Lane as a Response Constable, specialising as a Public Order Instructor, before being promoted to Sergeant in 2000. I worked in various Sergeant posts on the City Division, before

transferring to Operational Support, where I spent 14 years as an Operational Firearms Commander.

I was promoted to Inspector on February 1st 2017 and up until being posted as your NPI, worked as a Response Inspector.

I am married with 4 children (2 grown up, 2 teenagers) and 2 dogs. My interests include spending quality time with my family, all sports but most especially Rugby Union, food and drink, fitness training, music and travel.

I am really looking forward to a positive future as your new District Commander and to the challenges that the role brings. A recent restructure in Notts Police has seen Response officers moving back into our local stations at Beeston and Eastwood and hopefully, you will already be seeing the benefits that additional, locally based, locally accountable officers can bring. Our on going recruitment of new Police Constables and PCSO's will hopefully help to see our numbers grow further in the coming months. It is my hope that the restructure and recruitment will make a real difference for all of you who live and work in Broxtowe and I am looking forward to playing my part in that, as your local Inspector.



## IMPORTANT CONTACTS

To find out about crime in Broxtowe check out the Neighbourhood Alert System at

[www.nottswatch.co.uk](http://www.nottswatch.co.uk)

or visit the Nottinghamshire Police website at

[www.nottinghamshire.police.uk](http://www.nottinghamshire.police.uk)

In an emergency or to report a crime in progress contact the police on **999**.

To report information and suspicious activity contact the non-emergency Nottinghamshire Police number **101**.

To report crime anonymously contact Crimestoppers on **0800 555 111**



## Get in touch

Beeston Police Station

Ext: 310 2235

Mob: 07702 141736

[simon.riley@nottinghamshire.pnn.police.uk](mailto:simon.riley@nottinghamshire.pnn.police.uk)



# Supporting Broxtowe Businesses

## Support At The Click of A Button

Free business advice is available to Broxtowe based businesses through our business web chat facility.

The web chat connects you directly to a business mentor who can advise you on a range of issues from funding to advertising. Just visit

[www.broxtowe.gov.uk/businessadvice](http://www.broxtowe.gov.uk/businessadvice)

## Start-Up Grants

Start-up grant funding has recently been made available to entrepreneurs in Broxtowe providing up to £1,000 in support to start a business.

The funding will help cover the costs of starting your business and will help to encourage entrepreneurialism across Broxtowe. Details are available at

[www.broxtowe.gov.uk/businessgrants](http://www.broxtowe.gov.uk/businessgrants)

## D2N2 Business Health Checks

Business health checks have been held in Broxtowe, providing growing businesses the opportunity to obtain practical tips and information on any questions posed to the business adviser.

These events will continue throughout the year, if you are interested in attending one please get in touch on the contact details below.

## Eastwood Job Club

Job seekers based in Eastwood can attend a club to help support them in producing a CV, computer skills and other aspects to help find work.

The club has been running since September 2017 and has had 66 people engage. As a result, 7 interviews have taken place, 14 people have progressed in to training and 2 have found work.

## Coming up...

Our Economic Development Team are continuing to work with businesses to support them and boost our local economy, including:

- Running workshops in conjunction with D2N2 Growth Hub
- Jobs Fairs across the Borough
- Business health checks throughout the year

Want to keep updated on the local business news? Sign up to our weekly email newsletter via the Email Me Service – sign up at [www.broxtowe.gov.uk/emailme](http://www.broxtowe.gov.uk/emailme)

**Find out more by contacting 0115 917 3826 or emailing [economic.development@broxtowe.gov.uk](mailto:economic.development@broxtowe.gov.uk)**



*These units are currently available at Ash Court off Engine Lane in Newthorpe and would be ideal for a start-up business*



## New car park for Beeston

A new car park will open at Technology Drive in Beeston this summer. The car park will be ideal for commuters using the train station. Look out for more information over the coming months.



## Stapleford takes steps to become a 'clicks to bricks' town

Since the official launch of Stapleford's free public Wi-Fi last July, the network now has over 2,000 registered users.

Following the Wi-Fi install, the Council are now exploring the idea of creating a Stapleford mobile app, which could allow smartphone users to make secure payment for goods, manage a reservation at a restaurant or even order and collect items with local businesses! The Stapleford app would also feature a built in virtual

loyalty card, which if there is enough buy in from local businesses, would allow regular shoppers to build up points for spending locally, to be redeemed with participating retailers later.

Visit [www.broxtowe.gov.uk/Stapleford](http://www.broxtowe.gov.uk/Stapleford) for instructions on how to access the free Wi-Fi network from your mobile device.

## Markets In Beeston Square

| The Square, Beeston     | Time         | Days                              |
|-------------------------|--------------|-----------------------------------|
| Weekly Market           | 8:00 - 16:00 | Mondays & Wednesday (Weekly)      |
| Monthly Farmers' Market | 9:00 - 14:00 | (Third Saturday) of every month   |
| Arts and Craft Fairs    | 8:00 - 17:00 | May 24th / 25th / 26th 2018       |
|                         |              | June 21st / 22nd / 23rd 2018      |
|                         |              | July 26th / 27th / 28th 2018      |
|                         |              | August 23rd / 24th / 25th 2018    |
|                         |              | September 20th / 21st / 22nd 2018 |
|                         |              | October 11th / 12th / 13th 2018   |
|                         |              | November 8th / 9th / 10th 2018    |
|                         |              | December 20th / 21st / 22nd 2018  |



### Do you want to trade on the market?

Markets in the Borough are managed by external market operators, not the Council. Visit [www.broxtowe.gov.uk/markets](http://www.broxtowe.gov.uk/markets) to find details of the different operators for stall enquiries.







# Council Services 24/7: Do It Online

Need to find out when your next bin collection is? Want to have your say on the latest planning applications? Need to pay your Council Tax? We offer a wide range of online services that can be completed anytime, anywhere, without needing a visit to the Council Offices.

Services available on the Council's website include:

- Check your bin collection days online and get recycling advice at <https://www.broxtowe.gov.uk/recycling>, renew your garden waste subscription at <https://www.broxtowe.gov.uk/gardenwaste> or sign up for email updates at [www.broxtowe.gov.uk/emailme](http://www.broxtowe.gov.uk/emailme)
- Pay online for a range of services including Council Tax, Business Rates and general invoices using the e-store at [www.broxtowe.gov.uk/estore](http://www.broxtowe.gov.uk/estore)
- Report environmental issues like fly-tipping, litter and dog mess using the Love Broxtowe web app at [www.broxtowe.gov.uk/lovebroxtowe](http://www.broxtowe.gov.uk/lovebroxtowe)

Residents can also sign up to the Email Me service at [www.broxtowe.gov.uk/emailme](http://www.broxtowe.gov.uk/emailme) to receive updates on the services that matter to them direct to their inbox including the latest news, what's on and bank holiday opening hours.

Try it for yourself at [www.broxtowe.gov.uk](http://www.broxtowe.gov.uk).

## DO IT ONLINE

Broxtowe Borough Council offer a wide range of online services to make it easier and quicker for residents to do business with us.

|  |                  |                  |
|--|------------------|------------------|
| <b>APPLY FOR IT</b>  | <b>BOOK IT</b>   | <b>LOCATE IT</b> |
| <b>PAY IT</b>  | <b>REPORT IT</b> | <b>SAY IT</b>    |
| <b>DO IT ONLINE</b>  |                  |                  |
| <a href="http://www.broxtowe.gov.uk">www.broxtowe.gov.uk</a> |                  |                  |

## Stop Smoking Service

Smokefreelife Nottinghamshire is offering six weeks of FREE Nicotine Replacement Therapy and lots of support every week within Broxtowe. If you want to stop smoking, why not visit them by appointment on 0800 246 5343

| Day        | Time          | Location                         |
|------------|---------------|----------------------------------|
| Tuesdays   | 9am – 11.30am | Broxtowe Borough Council Offices |
| Tuesdays   | 1pm – 4pm     | Eastwood Citizens Advice         |
| Wednesdays | 8am – 12pm    | Abbey Surgery                    |
| Thursdays  | 8am – 12pm    | Telephone Clinic                 |
| Thursdays  | 9.30am – 12pm | Stapleford Primary Care Centre   |
| Thursdays  | 1pm – 7pm     | Beeston Primary Care Centre      |

**smokefreelife**

## Literacy Volunteers



Volunteers are needed to help primary school children with their reading and communication skills. You will read and play

word games with selected children on a one-to-one basis, to give them confidence and help them enjoy reading and communicating.

Volunteers need to be able to commit to visiting a school on the same morning or afternoon each week (for at least a year). Training and on-going support is provided. Applicants should like children, enjoy reading, be patient, flexible, and reliable. Anyone who volunteers will be vetted through the Disclosure and Barring Service. If you are interested, please ring 0115 876 5474 email [contact@literacyvolunteers](mailto:contact@literacyvolunteers).

**VOLUNTEERING**



# Broxtowe Leads The Way On Water Safety

Following the tragic death of Owen Jenkins at Beeston Weir, Broxtowe Borough Council has been a leading force at the Nottinghamshire Water Safety Partnership (NWSP) working to improve water safety throughout Nottinghamshire.

Ground-breaking work has been carried out to risk assess all the land the Council owns which is adjacent to open water. The work has been taken up as a best practice model throughout the County and is to be rolled out via the Partnership.

Meanwhile, Nicola Jenkins, Owen's mum, has set up the OWEN Trust – The Open Water Education Network – a programme that will deliver open water safety awareness to school-aged children and young people. The Trust revealed its logo earlier this year, designed by 19-year-old Phatcharaphon Temjit from Nottingham College. The family are also working with the Council to install a memorial stone and bench on the grass area near Beeston Weir.



## Broxtowe Disability Forum

We are a friendly group meeting three times a year to discuss various disability matters concerning residents in Broxtowe.

Currently we are looking for new members to join the Forum and help influence decision making on how services are delivered across the Borough.

If you would like to join or for more information please contact Saj Akbar by emailing [sajada.akbar@broxtowe.gov.uk](mailto:sajada.akbar@broxtowe.gov.uk)







**GILLOTTS**  
FUNERAL DIRECTORS



**Gillotts Funeral Directors is an independent family business with five funeral homes serving a wide area. Our dedicated team are there when you need us.**

Alan and Hazel -  
the team at our  
Stapleford office



154 Nottingham Rd, Eastwood NG16 3GG, Tel: 01773 713484  
1a Abbott St, Heanor DE75 7QD, Tel: 01773 713921  
136 Derby Rd, Stapleford NG9 7AY, Tel: 0115 949 1534  
The Old Church, Main St, Kimberley NG16 2LL, Tel: 0115 938 6720  
133 Nottingham Rd, Selston NG16 6BT, Tel: 01773 306909

[www.gillotts.co.uk](http://www.gillotts.co.uk)



SERVING FAMILIES FOR GENERATIONS



Today, funeral plans are available from a variety of sources. However, you wouldn't arrange your will in a supermarket, so why trust something so important to a company who knows nothing about funerals, your local area, or you?

Our Perfect Choice Funeral Plans can include as much or as little detail as you want, and have transparent pricing and financial security. Our friendly staff can advise you on how to make sure your plan is right for you and your loved ones.

For more information, visit [www.gillotts.co.uk/funeral-planning](http://www.gillotts.co.uk/funeral-planning), call in to any of our funeral homes, or call us for a chat.

## Need to See a Doctor?

### Daily Drop-In Clinic 10am to 11.30 am

24 hour internet and automated phone appointment system.

- Over 40s NHS Health Checks
- Sexual Health Screening
- Diabetes Clinic
- Weight Management
- Smoking & Alcohol Advice
- Blood Tests • Contraception
- Baby Clinic
- Travel Advice & Vaccinations
- Blood Pressure Checks
- C-Card Scheme Under 25s

[www.gfmc.org.uk](http://www.gfmc.org.uk)

**0115 8965 002**



**HomeBRIGHT**

Windows • Doors • Conservatories • Fascias & Soffits

**IS YOUR CONSERVATORY TOO HOT IN  
SUMMER AND TOO COLD IN WINTER?**



Tiled Conservatory Roofs giving economical benefits whilst adding value to your home. Conservatories constructed to suit your needs and budget. Call today for your free demonstration and quote.



# ACHIEVE MORE WITH **INSPIRE LEARNING**

Pick up our  
latest course  
guide in libraries  
now!

- Hundreds of Family and Community Learning Courses at your local library
- Study Programmes and Traineeships (16-24\*)
- Building Better Opportunities Towards Work
- Apprenticeships
- Adult Further Education Courses
- Access to Higher Education
- Tailored Training Courses for Employers

\*up to age 24 with EHCP plan.

Find out more at [www.inspireculture.org.uk/learning](http://www.inspireculture.org.uk/learning)

Call **0115 804 4363** or email [learning@inspireculture.org.uk](mailto:learning@inspireculture.org.uk)

 InspireLearningSkills  @Learn\_Inspire



**Local  
Independent  
Family-owned**

**DUFFY**  
OPTOMETRISTS  
T Ltd.

**Free  
On-site  
Parking**

Providing the best possible service for each and every patient has always been the number one priority for local independent eyesight specialists Duffy Optometrists.

The family-owned practice, with branches in Newark, Mansfield and Wollaton, promotes the highest standards of clinical eyecare and quality eyewear. Over 30 years in business, Duffy's has built up a reputation for providing individual style and optical expertise in a friendly atmosphere, with a personal service tailored to individual patient needs.

# 25% OFF

**YOUR SPECTACLES WHEN  
YOU SHOW THIS ADVERT\***



\*Offer ends 31st August 2018

ROCKSTAR

ELLE

Calvin Klein

etnia  
BARCELONA

MONT  
BLANC

WILLIAM MORRIS  
LONDON

Frames and lenses to suit all budgets

186 Wollaton Road  
Wollaton  
Nottinghamshire  
NG8 1HJ

 **01159-282572**

Call or book online at  
[www.duffy-optometrists.co.uk](http://www.duffy-optometrists.co.uk)

**We are here**



# Broxtowe Borough Council

## Useful addresses and telephone numbers

### COUNCIL SERVICES

Council Offices & Town Hall  
Foster Avenue  
Beeston, NG9 1AB

Kimberley Depot  
Eastwood Road, Kimberley, NG16 2HX

**All above offices**  
**Tel 0115 917 7777**  
**www.broxtowe.gov.uk**

### COUNCIL HOUSING REPAIRS

Daytime and out of hours  
**Tel 0115 917 7777**

### OTHER USEFUL SERVICES, ADDRESSES & TELEPHONE NUMBERS

Citizens Advice Broxtowe  
Council Offices  
Foster Avenue, Beeston NG9 1AB  
**Tel 0844 499 1193**  
**bureau@eastwood.cabnet.org.uk**

Citizens Advice Broxtowe  
Library & Information Centre  
Wellington Place, Eastwood NG16 3BG

**Tel 0844 499 4194**  
**bureau@eastwood.cabnet.org.uk**  
**www.citizensadvice.org.uk**

Age UK  
**0800 169 6565**

Consumer Direct  
**08454 040506**

NHS Advice  
24 hour Nurse & Health Advice  
**Tel 111**

Nottinghamshire County Council  
**Tel 0300 500 8080**

Voluntary Action Broxtowe  
Oban House  
8 Chilwell Road  
Beeston, Nottingham NG9 1EJ  
**Tel 0115 917 8080**

Eastwood Volunteer Bureau  
Wellington Place (rear of Library)  
Eastwood, Nottingham NG16 3BG  
**Tel 01773 535 255**

The Helpful Bureau  
39-41 Church Street  
Stapleford, Nottingham NG9 8DB  
**Tel 0115 949 1175**

Nottinghamshire Police  
(Non-emergencies)  
**101**

Crime Stoppers  
**0800 555 111**

Sure Start Children's Centre, Eastwood  
**0115 993 9750**

D.H. Lawrence  
Birthplace Museum,  
8a Victoria Street,  
Eastwood, NG16 3AW  
**Tel 0115 917 3824**



Bramcote Leisure Centre  
Derby Road, Bramcote, NG9 3GF  
**Tel 0115 917 3000**

Chilwell Olympia Sports Centre  
Bye Pass Road, Chilwell, NG9 5HR  
**Tel 0115 917 3333**

Kimberley Leisure Centre  
Newdigate Street, Kimberley, NG16 2NJ  
**Tel 0115 917 3366**

**www.lleisure.co.uk**

Contact your local councillor, all details available on the website at **www.broxtowe.gov.uk/yourcouncillor**

ਜੇਕਰ ਤੁਸੀਂ ਇਸ ਲਿਫਲੈਟ ਵਿੱਚ ਦਿੱਤੇ ਸਾਰੇ ਜਾਣਕਾਰੀ ਦੇ ਟਿੱਪਣੀ ਦੇਣਾ ਚਾਹੁੰਦੇ ਹੋ ਤਾਂ ਸਿੱਧ ਕਰਕੇ 0115 917 7777 'ਤੇ ਸੰਬੰਧਤ ਕਰੋ।

如果您需要此傳單用其他的形式或文字寫成，請撥電話 0115 917 7777 與我們聯絡。

اگر آپ اس سٹیٹمنٹ میں کسی تبدیلی کی ضرورت محسوس کرتے ہیں تو براہ کرم 0115 917 7777 پر رابطہ کریں۔

If you need this leaflet in other formats or languages contact us on 0115 917 7777

**This document is available in large print upon request.**

### TYPETALK - TEXT DIRECT

Typetalk's purpose is to bring the benefits of the telephone network to deaf, deafblind, deafened, hard of hearing and speech-impaired people.

Managed from a state-of-the-art centre, Typetalk's highly trained operators understand the special requirements of its customers and provide a warm, friendly service in complete confidentiality.

For Broxtowe Borough Council telephone **18001 0115 917 7777**.



### Follow Broxtowe with social media

Keep up-to-date with the latest Council news, jobs and activities in your area by following Broxtowe Borough Council on your favourite social networking sites or sign up to the email alerts.

**www.broxtowe.gov.uk/socialmedia**



Broxtowe Borough Council  
Town Hall, Foster Avenue,  
Beeston, Nottingham, NG9 1AB  
Tel 0115 917 7777 or  
Fax 0115 917 3030  
**www.broxtowe.gov.uk**

South Nottinghamshire  
Community Safety Partnership  
0115 917 3492

Broxtowe Borough Partnership  
Tel 0115 917 3492  
**www.broxtowepartnership.org.uk**



**www.broxtowe.gov.uk**