



Broxtowe matters

Summer 2019

In this issue



Live life to the full in
Independent Living
Page 18



Election Special
Page 12



£25,000 for mental
health projects
Page 10



Teaching the next generation



As part of our Clean and Green Campaign, our Recycling Team have been out and about recently visiting local schoolchildren to help them learn about recycling and protecting the environment for the future. Read more on Page 14.



Local care from a local company

Call us on: **0115 9226116**

www.homeinstead.co.uk/Nottingham



Home Instead Senior Care, is an award-winning local company specialising in providing care to people in their own homes. The company opened its office in Nottingham over 8 years ago and provides a full range of services to help people of all ages remain independent.

Recommended highly by the Care Quality Commission for their level of quality service and positive client testimonials. Home Instead delivers care to clients across Nottingham with a wide range of needs. Caregivers have practical experience in supporting clients with conditions such as Alzheimer's, Parkinson's and Diabetes.

The Home Instead Senior Care service allows people to remain at home and lead an independent life. From a few hours a day, up to 24 hours 7 days a week we provide a full care service to match the needs of the individual.



Mrs Catherine B and CAREGiver Joy, winners of the Easter bonnet competition



Services include:

- Companionship
- Light Housekeeping
- Local transportation & errands
- Meal preparation
- Respite support
- Convalescence support
- Shopping
- Personal care
- Specialist dementia & Alzheimer's care and much more...



Sian and Vicky modelling other Easter bonnet entries

Dementia Friendly Communities - Workshops

Research suggests that Dementia affects each individual in different ways however, even at late stages a person can understand what is going on around them. This in turn means that many people with Dementia can continue to live a relatively "normal" life as long as there is adequate support available, not just at home but in the community. This is where Dementia friendly communities can play a major part.

The concept is simple: to improve the quality of life for people with dementia and help them to become active members of the community.

At Home Instead in Nottingham, we have developed a comprehensive training program for our CAREGivers which covers all the aspects of Dementia and provides practical advice and techniques to help those suffering from the disease to continue to enjoy a good quality of life.

Part of this training is now being delivered as **free workshops** for families of those suffering from Alzheimer's and other Dementias or anybody who would like to find out more about the disease.

If you would like to attend one of our seminars please contact us on 0115 9226116 or email: primo.sule@homeinstead.co.uk

Celebrating Easter at Home Instead

Once again this year we invited our Clients and CAREGivers' children to celebrate Easter by joining in our Easter Bonnet and Easter Egg colouring competitions. We thoroughly enjoyed receiving the entries and proudly displayed them at our office.

The winning Easter bonnet was very much a "natural" affair with use of wonderful flowers as well as Easter chicks. Kath and her CAREGiver Joy joined forces to produce a bonnet which would easily qualify for a designer award, combining Spring and Easter together.

Our colouring competition for CAREGivers' children proved to be a hit with children and adults alike! We had some very creative and colourful eggs and bunnies and it was a challenge to pick a winner. The prize went to Ali, the 9 year old son of CAREGiver Farrah for his imaginative design and beautiful colouring. He was very excited to have won and enjoyed receiving his Easter Egg prize.



HOMECARE THAT'S GOOD ENOUGH FOR THE QUEEN!

We are delighted to receive the Queen's Award for Innovation in recognition of our quality care.



We are looking for CAREGivers who can help us to assist people with non-medical services including Companionship, Home Help and Personal Care in their own home.

Please call **0115 9226116**

email to recruitment.nottingham@homeinstead.co.uk



Getting in touch

Web visit www.broxtowe.gov.uk to pay and apply for services online

Email customerservices@broxtowe.gov.uk

Call 0115 917 7777 other useful contacts on the back cover



/broxtoweboroughcouncil



@broxtowebc



/BroxtoweBC



Never miss out

Stay up to date by signing up to our free email newsletters and choose what you want to be kept informed about.

Sign up now at www.broxtowe.gov.uk/emailme

Editorial: Broxtowe Borough Council's Corporate Communications Team

Design and Print: Systematic Print Management

Distribution: Royal Mail

Cost: 18p per copy

Broxtowe Matters is printed on environmentally friendly paper, please recycle it after reading.

Advertising is sourced by Spot On Media Ltd and the Council does not endorse any of the products or services advertised.

We welcome your comments and views – just get in touch at press@broxtowe.gov.uk or call 0115 917 3825.

Also in this issue...

Community News
P4



Business Growth
P16



Health
P10



Housing
P18



Election Special
P12



Community Safety
P21



Environment
P14



Useful Contacts
P24



Introduction from the Chief Executive

As we enter a new political administration at Broxtowe Borough Council, there is much to do and much to look forward to.



Ruth Hyde OBE
Chief Executive

Local Councillors are elected to represent the community and support residents with local issues - you can find out who your

Councillor is, along with how to contact them on Pages 12 and 13 or visit www.broxtowe.gov.uk/yourcouncillor

One of the first tasks of the new administration will be putting together a new Corporate Plan to outline what we want to achieve over the next four years.

Since our last corporate plan a great deal of progress has been made towards making Broxtowe a great place to live, work and spend leisure time, from achieving an average tenant satisfaction rate of 93% to building 349 new homes on brownfield land and giving planning permission for a further 1,470 and seeing fly tipping incidents decrease in the Borough, bucking local trends.

You can read more about how we have performed against each of our objectives at www.broxtowe.gov.uk/performanceandspending

The Council will also continue to rise to the financial challenges that all local authorities face, making sure we deliver high quality services that are important to our residents and working as effectively as we can for the future.

As we move into the summer months, we have 66 fantastic parks and open spaces in the Borough, which have seen significant investment as part of our Pride in Parks and Clean and Green campaigns, to help you enjoy the great outdoors as the weather (hopefully) warms up. I wish you all a lovely summer!



Do you need help to get into work, education or training?

Do you need help and support to get into work, education or training or do you need help to improve your financial resilience? Support is available through the following schemes:

Building Better Opportunities is a Lottery and European funded programme that is offering support to people who are unemployed or economically inactive and living in Nottinghamshire and Derbyshire.

- **Towards Work** is for those with barriers to work and offers a work coach to help you move towards your future goals. Find out more and refer yourself on the website www.towardswork.org.uk/make-a-referral/
- **Opportunity and Change** is for people with multiple needs including those with mental health problems, or who have experience drug problems. To find out more have a look on the website www.opportunityandchange.org or you can refer by email to opportunityandchange@frameworkha.org
- **Money Sorted** provides personal navigators to help you improve financial resilience. To find out more visit the website www.moneysortedind2n2.org To refer drop an email to info@moneysortedind2n2.org and we will be in contact with you.



Broxtowe Lotto
SUPPORTING THE LOCAL COMMUNITY

Support your local community

www.broxtowelotto.co.uk

60% of every ticket sold goes to good causes in Broxtowe

Look on the websites for real stories of how they have helped people to overcome barriers to work and education.

Get in touch to see how they can help you change your life! how you can change your life!

JOHN FLYNN
OPTICIAN
 ESTD.1938

CLINICAL EYECARE – QUALITY EYEWEAR

1a Devonshire Avenue, Beeston, Nottingham NG9 1BS enquiries@johnflynopticians.co.uk www.johnflynopticians.co.uk

Established in Beeston, Nottingham over 70 years ago, John Flynn Opticians is located on the corner of the leafy Devonshire Avenue and Chilwell High Road (opposite corner to Ellis-Fermor & Negus Solicitors).

Director and senior Optometrist at John Flynn Opticians, Dr Sheeraz Janjua is one of only 25 Optometrists in UK to be awarded the degree of Doctor of Optometry from Aston University for his research in Dry Eye Syndrome. He was also one of a select few nominated for the Optometrist of the Year award in 2018. Having been at the helm in Beeston since 2016, Dr Janjua provides both private and NHS patients with the option to benefit from an enhanced eye examination using an OCT instrument to produce macular, retinal and optic nerve scans to aid early diagnosis of various ocular conditions.

With over 45 years of experience between us we have 2 goals: Provide a friendly, welcoming, homely environment with a passion for great customer service and to combine the best ophthalmic lenses from some of the most respected lens manufacturer's alongside some of the finest hand-made frames from around the world.

We believe that the best spectacle frames are made by companies who just make spectacle frames. Sounds obvious? Most 'designer' spectacle brands originate from popular fashion brands lending their name to a range of mass-produced frames, usually made in China from cheap materials. We stock handmade frames made by expert manufacturers, largely in France, Italy and Japan. The quality of these frames speaks for themselves. We also have a range of beautiful frames at a lower price point, so you can have a pair for every outfit!

With that in mind let us introduce you to Hove native **'Kirk&Kirk'** our new collection of handmade acrylic frames with a mission statement to create unique eyewear that is exciting and easy to wear. You will get a sense that this collection is something different, the choice to use the best French made acrylic allows the light to flow through the frame and make the colours pop.



Model 'Victor' as worn by Prue Leith on the 2018 series of 'Bake Off'

One of our most popular lens ranges year round but especially during the darker months are our Drive specific Lenses from **Zeiss, Hoya, Tokai** and **Essilor**.

For motorists that drive mainly in the evening we would recommend the Night Drive lens from **Tokai** or the **Enroute Pro** from **Hoya**.

SEECOAT DRIVE KEY FEATURES:

- ✓ Reduces the glare caused by oncoming headlights, street lights and other light sources
- ✓ Clear, aesthetic and transparent with the benefits of SeeCoat coatings
- ✓ To wear both day and night

Conventional lens

SeeCoat Drive lens

Image is for illustrative purposes only.

We also supply the new **Nikon Seecoat Drive** an everyday lens coating with enhanced driving performance that can be paired with their finest lenses and available with **Transitions/Transition Xtractive**.

We also dispense specialist lenses for people with vision loss related to Glaucoma, Retinitis Pigmentosa, Diabetic Retinopathy and macular degeneration (AMD). These special lenses change the direction of light to alternative healthier parts of the retina. Combined with a special filter to improve contrast - they have been a huge success with our patients.

**Monday to Friday from 9am to 5:30pm.
 Saturday 9am-5pm.**

John Flynn Opticians welcomes the registration of new patients and parking is available in the practices own car park.

Want to stay upto date with the latest news and arrivals?, why not follow us on **Instagram and Facebook @johnflynopticians**



0115 925 5051





Electric Vehicle Charging Points

28 electric vehicle charging points have been installed in Beeston, Stapleford, Kimberley and Eastwood thanks to funding from the Go Ultra Low Cities Project.

Electric vehicle drivers can access the charge points using an app or RFID card. Residents and businesses with a postcode in Nottingham, Nottinghamshire, Derby or Derbyshire can register online at www.chargeyourcar.org.uk/d2n2 for a D2N2 card to take advantage of a reduced tariff of 20p per Kilowatt when using D2N2 charge points.

Electric vehicle owners who are already on the national POLAR network can also access the charge points via their app or RFID card.

To find out more visit www.broxtowe.gov.uk/parking



Broxtowe Community Celebration Summer Event

The much-loved Broxtowe Community Celebration Summer Event will return to Round Hill Primary School in Beeston on Saturday 6th July between 11.00am and 4.00pm.

People of all ages, communities and cultures will come together for the event to share music, song, dance, arts and food. This year's programme includes Community Drumming, Chinese Lion Dance, Henna Hand Painting, Russian Dance and much more.

The event has been organised by Broxtowe Community Celebration Group with the support of Broxtowe Borough Council and other partnership organisations.

The event organisers are looking for people to help volunteer on the day in a variety of roles including serving food and drink, setting up, meeting and greeting, marshalling and car parking duties.

If you're available to help volunteer on the day, even for an hour, then please get in touch by emailing Saj at sajada.akbar@broxtowe.gov.uk



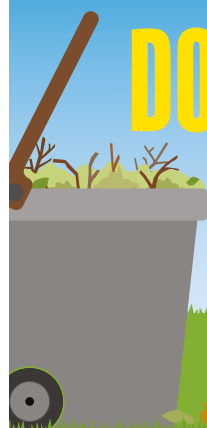
VOLUNTEERING

DON'T FORGET - SIGN UP NOW

For the 2019/20 GARDEN WASTE SERVICE



www.broxtowe.gov.uk/gardenwaste





GP Practice Appointments Available Seven Days A Week

Pre-bookable appointments are available Monday-Friday, 6.30pm-8pm, plus weekends and bank holidays and you can be seen by a GP, Nurse or Healthcare Assistant.

To book an appointment, please contact your surgery during normal opening hours who will then make an appointment for you. Please be aware that the appointment may take place at another GP Practice in the area as practices open on a rotation basis.

These appointments will suit people who work on a weekday and are ideal for the following types of healthcare issues:

For GPs

- New pains
- New rashes
- New health issues

For Nurses

- Dressings
- Cervical Screening (a Smear test)
- NHS Health Checks

For Healthcare Assistants

- Blood Pressure Checks
- ECGs

Ask at your GP Practice for more details or to book an appointment.

Please note that this is not a walk-in service.

Available at:

- Abbey Medical Centre, Beeston
- Bramcote Surgery, Bramcote
- Chilwell Meadows Surgery, Chilwell
- Eastwood Primary Care Centre, Eastwood
- Giltbrook Surgery, Giltbrook
- Hama Medical Centre, Kimberley
- Hickings Lane Medical Centre, Stapleford
- Linden Medical Group, Stapleford
- Saxon Cross Surgery, Stapleford
- The Manor Surgery, Beeston
- The Newthorpe Medical Centre, Eastwood
- The Oaks Medical Centre, Beeston
- The Valley Surgery, Chilwell



Part 2 Local Plan Update

The Broxtowe Part 2 Local Plan was submitted to the Secretary of State for examination by the Planning Inspectorate in the summer of 2018 and public hearings were held in December 2018. The Council has made amendments to the plan (Main Modifications) in response to the comments made during the Examination and is currently consulting upon these.

Once the consultation is closed, the Inspector will consider all of the responses that have been received and will then issue a report to the Council which will detail whether or not the plan is 'sound' and legally compliant. This concludes the Examination process.

Full Council will then consider whether or not the Plan should be adopted as the Local Plan for the Borough up until 2028.

For more information visit www.broxtowe.gov.uk/part2localplan





Youth Homelessness Food Parcel Challenge

Could you live on basic food rations for a week? Broxtowe Youth Homelessness is looking for people to help them raise money and awareness by living on an emergency food parcel for a week. They can either get sponsored or donate the financial difference between a food parcel and an average weekly shop.

The challenge will take place from Friday 13th to Thursday 19th September with a thank you event at Middle Street Resource Centre, Beeston on Friday 20th September, 6.00pm - 8.00pm.

103,000 young people experience homelessness in the UK each year.

To pledge your support contact Broxtowe Youth Homelessness on 0115 939 6760 or visit www.broxtoweyouthhomeless.org.uk

You can also find them on Facebook and Twitter @homestreethome1 #BYHfoodparcelchallenge



BROXTOWE YOUTH HOMELESSNESS



Universal Credit Help to Claim Service



Citizens Advice Broxtowe have set up a new service for people who require help with their Universal Credit claim. Appointments are available throughout the week in Beeston & Eastwood.

What help can you expect?

- Check if Universal Credit is the right benefit for you and your circumstances
- Answer your Universal Credit questions
- Provide access to the internet
- Complete your claim with you
- Help you submit evidence

The application process is online and therefore applicants need to bring along some basic evidence to avoid delay in completing their application. These include bank account details, mobile phone, information about your housing and rent.

Appointments can be made either by calling into Citizens Advice in Beeston or Eastwood or by telephone:

- **Beeston: 01159 173802**
- **Eastwood: 01773 768363**

More information can be found at <https://citizensadvicebroxtowe.org.uk/help-to-claim/>





Boosting the community's health and wellbeing

Transform Training is a local charity whose mission is to bring emotional education to as many people as possible.

Their work supports disadvantaged young people and they have also recently launched a project to support and engage everyone in the community interested in boosting their emotional wellbeing.

They offer workshops, activities and coaching support to encourage you to make small changes to improve your health and wellbeing. This includes free monthly events that are open to everyone, as well as wellbeing focused fundraisers and individual support to take on personal challenges that help them to embed positive changes into their daily lives.

Find them on Facebook and Instagram @timetotransformproject or email stacey.m@transformtraining.org.uk to find out more.



LES MILLS VIRTUAL

Exercise classes at a time to suit you

Les Mills Virtual classes are launching at Bramcote Leisure Centre, Chilwell Olympia and Kimberley Leisure Centre.

This means a bigger programme of fitness classes with greater flexibility to work out when you want. You may choose an early morning blast, an afternoon class or a late evening session. Classes offer a truly inspiring experience that will drive amazing results.

Les Mills Virtual is included as part of our gym memberships.

For further information www.lleisure.co.uk



Leisure Summer Events 2019

Playdays FREE CHILDRENS ACTIVITIES

Stapleford - Ilkeston Road Recreation Ground NG9 8JE **Tuesday 30th July 12-4pm**
Eastwood - Coronation Park, NG16 2LQ **Thursday 8th August 12-4pm**

Time Warp 1940s

Saturday 10th August

Admission charge: Check website for details

Period music, food, re-enactors, classic cars, fashion and much more.

Dovecote Lane Recreation Ground, Beeston, NG9 1HU

Outdoor cinema experience

Mini Reel: Children's films

Tuesday 13th - Sunday 18th August

Day time screenings £1 a ticket

Reel Outdoors: Evening screenings

The Greatest Showman, A Star Is Born, Mamma Mia!

Here We Go Again, Bohemian Rhapsody

Thursday 15th - Sunday 18th August 7:30pm screenings

Ticket Prices: £9, concession £7.50



Further information visit: www.lleisure.co.uk/events



Mental Health Update

The Council has committed £25,000 for two mental health projects.

A £5,000, 6 month pilot project on early intervention will be established to identify vulnerable clients who return to Citizens Advice and Eastwood Volunteer Bureau on a cyclical basis. A key worker will be allocated to them, making regular checks and identifying potential crisis points.

£20,000 will help fund skilled mental health support sessions through MIND to help provide extra resource to manage currently oversubscribed sessions. Basing a MIND Worker in Eastwood Volunteer Bureau will contribute to Wellington Place becoming a mental health wellbeing hub. The sessions will include one to one support to enable people to set and meet their goals, increase confidence and encourage re-engagement.

If you need mental health support visit www.broxtowe.gov.uk/mentalhealth for links to organisations which can help.



Need help losing weight?



Everyone Health offers:

- **Adult Weight Management** - Broxtowe residents with a BMI above 25 may be eligible for a free 12 month community based weight management service, including nutrition and physical activity sessions, with on-going support. Call 0333 005 0092 to find your nearest group and book on!
- **Family Healthy Lifestyle Programme - Alive 'N' Kicking** - A free 12 week programme packed full of interactive activities for children and their families, including healthy eating advice and fun physical activity.
- **Healthy Me, Healthy Baby - Maternity Lifestyle Service** - Support for pre and post-natal women with a BMI above 30, providing healthy eating and physical activity advice as part of a 1:1 service.

- **ENGAGE – Get up and go Exercise/Falls prevention** - A group exercise programme for adults over 55 which aims to improve balance, increase confidence and provides an opportunity to meet new friends.
- **Health Walks** - Free health walks across Nottinghamshire led by friendly, fully qualified walk leaders. Walks last between 30 and 60 minutes followed by coffee and a natter. Everyone is welcome no matter their age or ability. You can also volunteer as a walk leader.

For more information call 0333 005 0092 or email changepointnotts@everyonehealth.co.uk



**SUPPORT OUR
ARMED FORCES**



**Broxtowe
Borough
COUNCIL**

FREEDOM OF ENTRY PARADE

**Saturday 29th June, at 11.00am
Beeston Town Centre**

**Line the streets as
170 (Infra Sp) Engineer Group
and The Royal Engineers Association
parade through the town.**

As the route will be closed for the parade there will be some traffic disruption

Contact the Civic Office on 0115 917 3210



www.broxtowe.gov.uk

Election of Borough Councillors 2019 - 2023

Details of your newly elected Councillors and how to contact them



ATTENBOROUGH & CHILWELL EAST 1



Richard Jackson
CON
20 Margarets Court,
Bramcote,
Nottingham NG9 3HX
0115 939 9051



Eric Kerry
CON
208 Long Lane,
Attenborough,
Nottingham NG9 6DB
0115 922 5604



Trish Roberts-Thomson
CON
2a Meadow Lane,
Chilwell,
Nottingham NG9 5AA
0115 925 9725

AWSWORTH, COSSALL & TROWELL 2



Lydia Ball
CON
The Woodlands,
The Lane, Awsworth,
Nottingham NG16 2QP
0115 932 6788



Don Pringle
CON
31 Nottingham Road,
Trowell,
Nottingham NG9 3PF
07917 038 817

BEESTON CENTRAL 3



Lynda Lally
LAB
37 Read Avenue,
Beeston,
Nottingham NG9 2FJ
0115 922 3823



Patrick Lally
LAB
37 Read Avenue,
Beeston,
Nottingham NG9 2FJ
0115 922 3823

BEESTON WEST 4



Greg Marshall
LAB
108 Park Road,
Beeston,
Nottingham NG9 4DE
0115 917 7777



Janet Patrick
LAB
16 Devonshire Avenue,
Beeston,
Nottingham NG9 1BS
0115 925 0385

BEESTON RYLANDS 5



Teresa Cullen
LAB
121 Meadow Lane,
Beeston,
Nottingham NG9 5AJ
07921 800 573



Dawn Elliott
LAB
27 Redland Drive,
Chilwell,
Nottingham NG9 5JZ
07543 400 620

BEESTON NORTH 6



Barbara Carr
LIB
5 Tracy Close,
Beeston,
Nottingham NG9 3HW
07817 558 854



Steve Carr
LIB
5 Tracy Close,
Beeston,
Nottingham NG9 3HW
07946 411 901

BRAMCOTE 7



Hannah Land
LIB
43 Hanley Avenue,
Bramcote,
Nottingham NG9 3HE
07740 198 612



Ian Tyler
LIB
308 Derby Road,
Bramcote,
Nottingham NG9 3JN
0115 939 2102



David Watts
LIB
6 Edingale Court,
Bramcote,
Nottingham NG9 3LY
0115 854 4031

BRINSLEY 8



Elizabeth Williamson
ASHFIELD IND
7 St James Drive,
Brinsley, Nottingham
NG16 5DB
07764 997 059

CHILWELL WEST 9



Eileen Atherton
CON
4 Penrhyn Crescent,
Chilwell,
Nottingham NG9 5NZ
0115 967 7260



Helen Skinner
LAB
2 Burton Drive,
Chilwell,
Nottingham NG9 5NS
07596 073 832



Colin Tideswell
LAB
23c Valley Road,
Chilwell,
Nottingham NG9 4GG
07748 365 601

EASTWOOD HALL 10



Joshua Parker
CON
Council Offices,
Beeston, Nottingham
NG9 1AB
07597 333 527



Susan Bagshaw
LAB
5 Owlston Close,
Eastwood,
Nottingham NG16 3GA
07960 252 273



Milan Radulovic
LAB
4 Cross Street,
Eastwood,
Nottingham NG16 3GX
07768 658 717

EASTWOOD ST. MARY'S 12



David Bagshaw
LAB
5 Owlston Close,
Eastwood,
Nottingham NG16 3GA
07976 941 445



Marie Hannah
LAB
44 Coach Drive,
Eastwood,
Nottingham NG16 3DH
07951 699 297

GREASLEY 13



Mick Brown
CON
233 Nottingham Road,
Easwood,
Nottingham NG16 3GS
01773 719 790



Eddie Cubley
CON
33 Chapel Street,
Eastwood,
Nottingham NG16 3JL
07760 395 397



Margaret Handley
CON
30 Coach Drive,
Eastwood,
Nottingham NG16 3DH
01773 531 466

KIMBERLEY 14



Mel Crow
CON
27 Cliff Boulevard,
Kimberley,
Nottingham NG16 2JJ
0115 938 4773



Shane Eason
CON
3 Chapel Place,
Kimberley,
Nottingham NG16 2NQ
07785 347 741



Richard Robinson
IND
4 Peacock Drive,
Eastwood,
Nottingham NG16 3HW
07751 970 640

NUTHALL EAST & STRELLEY 15



Philip Owen
CON
2 Atkinson Gardens,
Nuthall,
Nottingham NG16 1LN
0115 938 9728



Paul Simpson
CON
64 Horsendale Avenue,
Nuthall,
Nottingham NG16 1AN
0115 927 2090

STAPLEFORD NORTH 16



Jan Goold
CON
39 Perth Drive,
Stapleford,
Nottingham NG9 8PZ
0115 949 9217



Richard MacRae
IND
245 Ilkeston Road,
Stapleford,
Nottingham NG9 8JH
07740 344 427

STAPLEFORD SOUTH EAST 17



David Grindell
LIB DEM
21 Rockwell Court,
Albert Street,
Stapleford, NG9 8BZ
0115 917 7777



Tim Hallam
LIB DEM
1A Northwood Street,
Stapleford,
Nottingham, NG9 8GH
07590 407 336

STAPLEFORD SOUTH WEST 18



Ray Darby
LAB
8 Midland Avenue,
Stapleford,
Nottingham NG9 7BT
0115 917 0913



John McGrath
LAB
2 Park Street,
Stapleford,
Nottingham NG9 8EU
07905 576 353

TOTON & CHILWELL MEADOWS 19



Lee Fletcher
CON
1b Ellis Grove,
Beeston,
Nottingham NG9 1EP
07918 552 317



Stephanie Kerry
CON
11 Hook Close,
Chilwell, Nottingham
NG9 5AT
07711 801 442



Halimah Khaled
CON
16 Sheriffs Lea,
Toton,
Nottingham NG9 6LJ
07860 490 989

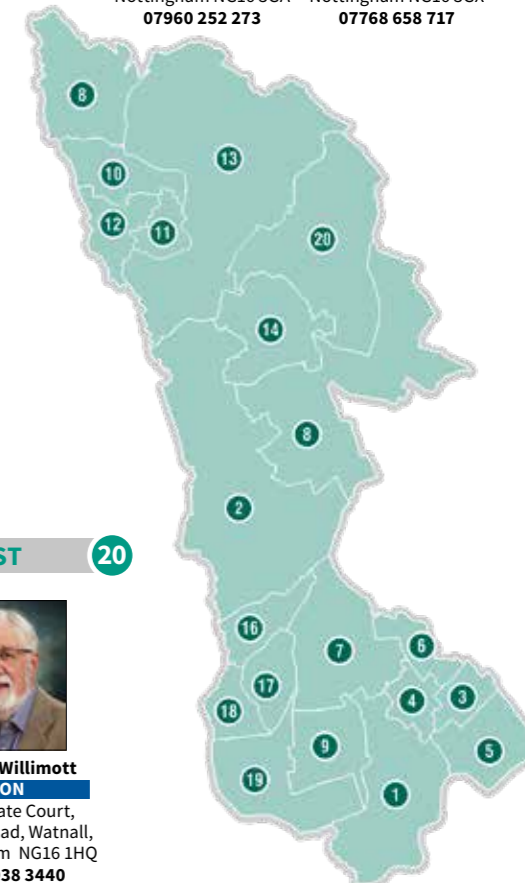
WATNALL & NUTHALL WEST 20



Jill Owen
CON
2 Atkinson Gardens,
Nuthall,
Nottingham NG16 1AG
0115 938 9728



Robert Willimott
CON
3 Lychgate Court,
Trough Road, Watnall,
Nottingham NG16 1HQ
0115 938 3440





Recycling Your Plastic

One of our most frequently asked questions is what plastics can be recycled in the green-lidded recycling bin so here's a list of what plastics can and can't be recycled...

Plastics you can and can't recycle

Can recycle

- ✓ Plastic bottles
- ✓ Yoghurt pots
- ✓ Margarine/butter tubs

You can also recycle tins, cans and mixed paper and card.



Can't recycle

- ✗ Fruit and meat trays
- ✗ Ready meal trays
- ✗ Plastic bottle tops
- ✗ Plastic bags
- ✗ Toys
- ✗ Plastic tubes
- ✗ Plastic wrap



Preparing your plastic for recycling

All remaining contents should be removed and the container must be rinsed out before placing it in the recycling bin. Lids and tops should also be removed.

For more information about recycling, visit www.broxtowe.gov.uk/recycling



Council and Community Keep Broxtowe Clean

Broxtowe's Clean and Green Campaign has got off to a flying start, with real progress made in keeping the Borough tidy and improving parks and open spaces for all residents to enjoy.

So far:

- 63 litter bins have been refurbished
- 12 Community Clean up events have taken place, with 200 local residents joining Community Clean Teams
- 5 groups who the Council wasn't previously working with have been in touch about getting involved
- 8 waste days have taken place to enable residents and tenants to dispose of their bulky waste

We've also been doing our bit to help reduce fly tipping with new measures to tackle hot spot areas, including around New Road and Narrow Road in Watnall where

incidents have reduced by 75% between September 2018 and March 2019. Further work will now taking place at other hot spot sites, including the entrance to the sewage works on the A610.

Be one of the many residents who are proud of our community, not one of the few who are leaving a litter legacy for our children. You can help by:

- Disposing of waste in the right way – you are responsible for your rubbish, even if you pay someone else to dispose of it.
- Not littering or dropping cigarette butts on the floor.
- Picking up the poop when you're out with your dog.
- Using the bins provided.
- Taking your litter home with you.

If you're interested in getting involved in the Council's Clean and Green campaign you can download a resource park at www.broxtowe.gov.uk/cleanandgreen



School education programme

If your school would like a visit from our Recycling Team, please contact recycling@broxtowe.gov.uk



VOLUNTEERING

Pride In Parks

£250,000 has already been invested in improving the Parks and Open Spaces across Broxtowe including sites managed by the Borough Council and the Town and Parish Councils. A further £250,000 has been committed for 2019/20 for both Broxtowe and Town and Parish Council sites. This has enabled successful funding bids to the value of £283,000 that have significantly increased the improvements that have been made.

Brinsley

- £17,000 play area improvements at Brinsley Recreation Ground.

Eastwood

- £28,000 play area improvements at Mansfield Road Recreation Ground.

Awsorth

- £5,000 play area improvements at Shilo Recreation Ground and major improvements to the cricket pavilion at The Lane Recreation Ground thanks to Pride in Parks and external funding.

Trowell

- £14,000 play area improvements at Trowell Parish Hall - *work due to start late spring.*

Stapleford

- £165,000 for a new play area and multi use games area at Hickings Lane Recreation Ground - *work in progress.* £15,000 scheme to upgrade play area at Judson Avenue.

Bramcote

- £120,000 for a refurbished play area and outdoor fitness equipment at King George V Park - *work due to start this summer.*

Greasley

- £57,000 improvement scheme at Beauvale Park Play Area, with additional work proposed later this year.

Kimberley

- £20,000 at Millfield Road Play Area and improvements to the bowls pavilion and green at The Stag Recreation Ground. Play area improvements proposed at Hall Om Wong Open Space and Knowle Park.

Nuthall

- £47,500 play facility improvements at Redbridge Drive and £30,000 at Basil Russell Playing Fields. £18,000 new outdoor fitness equipment coming soon at Basil Russell Playing Fields.

Beeston

- £87,000 improvements at Broadgate Park and £100,000 for major improvement works at Leyton Crescent Play Area thanks to Pride in Parks and external funding.

Chilwell

- £30,000 improvement scheme at Sherman Drive Open Space - *coming later this year.*



What's happening in our towns

Cinema operator named

A new cinema is due to open in Beeston in late 2020 after the Council secured a deal to bring Arc Cinema to the town centre as part of its plans to create a vibrant hub of leisure facilities and new homes.

The eight-screen cinema will create around 30 new jobs for the town and forms part of the mixed-use development which will include a greater choice of food and drink outlets and 132 new homes.

Negotiations continue on 50% of the commercial units available for food and drink outlets and the sale of the residential site has been agreed.



Email Me Bulletins

Want to keep up to date with the support on offer to businesses within the borough? Look no further!



Broxtowe Borough Council's Email Me service for businesses covers everything you need to know, including:

- Commercial Property Updates
- Training and Skills development available to businesses
- Information on Grants and Funding
- General business news in Broxtowe

Sent out weekly, it keeps you up to date with the Broxtowe business community and support available.

Sign up today at www.broxtowe.gov.uk/emailme

Domestic Abuse Awareness Sessions For Businesses



With only 5% of businesses having a policy or guidelines in place for dealing with employees affected by domestic abuse, Broxtowe Women's Project could help you put an action plan in place.

They provide short awareness sessions to enable businesses to understand how they can support employees who are affected by domestic abuse.

People can be affected by domestic abuse at any time and it can affect their work performance and frequently leads to time off work. This has a direct impact on your business in terms of decreased productivity, time off work, lost wages and sick pay.

If you are interested in receiving training, please call Broxtowe Women's Project on 01773 718 555.





Supporting local business

Start Up Grants supporting businesses like Jo's

Last year, we launched a Business Start-Up Grant to help new businesses with start-up costs.

Jo Porter's business Sound Escapes is one of 9 businesses the scheme has already helped.

Based in Beeston, Jo runs a group tour business offering bespoke concert and performance tours for music ensembles and choirs from all over the world who wish to tour to the UK and Ireland.

"The grant has provided significant financial support to ensure I could invest in areas that I may not have been able to otherwise, including the cost of printed marketing materials, business cards, flyers and an exhibition banner, as well as online Client Relationship Management software."



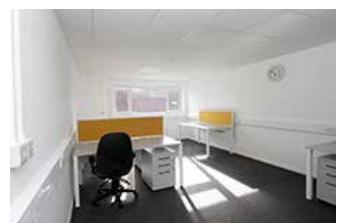
For more information about the scheme, visit www.broxtowe.gov.uk/businesssupport



Looking for office space to grow your business?

Beeston Business Hub was established in October and offers desk space for up to 16 businesses looking to take their next step in the corporate world. Located centrally in Beeston, the Hub is a fully serviced office space equipped with kitchen, meeting/break out area, Wi-Fi and communal outdoor space.

Ideally suited for businesses taking their first premises, this space offers fantastic networking opportunities with other businesses, with a flexible lease agreement to suit the needs of your business. Starting at £60pcm, rent will increase over four years in line with your business growth, offering a stepping stone in to fully commercial office space.



Free Business Health Checks

Working closely with the D2N2 Growth Hub, we are offering business support 'health check' sessions for Broxtowe businesses. The 90 minute sessions give businesses the opportunity to ask questions about all aspects of business, from starting-up to taking on a new employee.

For information about our next event, please contact our Economic Development Team on Economic.development@broxtowe.gov.uk or ring 0115 917 3826.





Housing News



Independent Living doesn't mean slowing down...

Over 60 and looking for a new home?

Broxtowe's Independent Living Service provides you with the support you need to live independently, whilst you enjoy everything retirement has to offer.

Moving in to one of our Independent Living properties gives you peace of mind with:

- Personalised Independent Plans (I-Plans) so Independent Living Co-ordinators can support you in maintaining your independence
- Communal facilities, such as a lounge, laundry room and hairdressing room, in most schemes
- Regular activities brought to you by two specialist Activities Co-ordinators
- A Lifeline calling system linked to a 24 hour response centre, staffed by trained operators who are available seven days a week
- Convenient locations throughout the borough, which are close to social, transport and shopping facilities.



"I'm going to settle in nicely"

Mrs Kemp, 86, who recently moved into Southfields Court, Chilwell after attending an Open Day at the Scheme.

"Everyone has been friendly and welcoming and the Independent Living Co-ordinator has been very helpful. My flat is very nice and comfortable and I have more or less everything I need. I wasn't local to the area, but I'm close to my family now, who are pleased to have me nearby. It was a big decision to move from my bungalow, but after time to adjust I think I'm going to settle in nicely. I'm looking forward to joining in with activities and getting to know my new neighbours."



Refurbishment programme

Communal areas across our Independent Living Schemes have been refurbished, giving them a more modern feel. Tenants have been fully involved in selecting

the brighter colours and comfortable furniture to suit the needs of residents and the social activities which take place in these areas.



Properties Available Now

We have several properties currently available. If you'd like to find out more, contact the Housing Team on 0115 917 3347 or email hps@broxtowe.gov.uk





Your Rent Matters



Paying your rent on time is part of your tenancy agreement

All tenants have recently received a new tenancy agreement which states that rent must be paid in advance.

If you pay weekly

Your rent should be paid for the week ahead and your account should always be clear.

If you pay monthly

When you make a payment your account should go into credit to cover the coming month's rent. If you pay at the end of the month to cover the rent for the month just gone, you are not paying in advance.

You can ensure that your rent is paid in advance by:

- Changing the payment date
- Changing the payment frequency
- Making a payment
- Making affordable weekly or monthly payments to ensure that the account is paid in advance by the end of this financial year



Did you know?

- The rent you pay covers the cost of maintaining your home, including carrying out repairs
- 70% of our customers pay their rent on time and have a clear rent account
- We send you a statement every 3 months so you can see whether you are up to date with your payments
- You can pay your rent online, 24 hours a day

Help Available

If you are worried about your rent account or about anything to do with benefits, debts or budgeting then please contact us. The sooner you contact us to discuss any difficulties the easier it is to get back on track.

Our Income Collection Team can help you to make sure your rent is up to date and put you in touch with other agencies who can give more specialist advice.

Meet the team



Income Collection Officers

Eastwood, Kimberley, Watnall and North Broxtowe -
Shaun Wilson

Stapleford, Toton and Trowell -
Pauline Marshall

Beeston -
Janet Winfield

Chilwell and Bramcote -
Pauline Marshall and Shaun Wilson

Income Collection Assistants

Nathan Thomas, Joanne Tuggey, Margaret Bowmar and Zoe Passingham are all based in our offices and can assist you with all queries.

If you're unsure whether your account is paid in advance or not then please contact the **Income Collection Team on 0115 917 7777 or email us at recovery-rents@broxtowe.gov.uk**



Meet the Manager Surgeries

Due to the success of the Meet the Manager Surgeries at the Independent Living Schemes, the Housing Team is putting plans in place to extend these to cover more Housing services.

These drop-in surgeries will enable tenants to meet Managers and provide feedback on their experiences of Housing services they receive.

“These surgeries provide an opportunity for customers

to share their views and opinions to help shape services going forward. Being able to listen to the customers’ perspective provides valuable insight into their experience of living in our homes” said the Independent Living Manager.

To find out more information and receive dates of these surgeries, sign up to Housing News at www.broxtowe.gov.uk/emailme and select Council Housing.

Introductory and New Secure Tenancies

From April 2019, new tenants will be signed up to Introductory Tenancies.

Introductory Tenancies last for a period of 12 months and during this time, the tenants ability to sustain a tenancy is closely monitored.

The emphasis is on tenancy sustainment. Housing will ensure that tenants receive the correct advice and support in their tenancy depending on their circumstances, but also ensure any breaches of tenancy are dealt with proactively.

During the period covered by the Introductory Tenancy the tenant will be visited a minimum of three times, to discuss their tenancy, any issues and be offered support.

Introductory Tenants have less rights than Secure Tenants, which are the tenancies existing tenants of the Council were offered.

If there are repeated breaches of the Introductory Tenancy and positive steps are not taken by the tenant, they provide an accelerated process for the Council to gain possession of the property.



Lifeline GIVES YOU PEACE OF MIND

24 hour support, when
you need it from
as little as £3.62 a week

Call our dedicated Lifeline Co-ordinator
on 0115 917 7777 or email lifeline@broxtowe.gov.uk



Blog from Inspector Riley



Anti-Social Behaviour Chilwell Meadows

I am aware that anti-social behaviour in the 'Rugby World Cup Winners' estate / Mountbatten Park area has once again raised its head. Sgt Harding's Beat Team have been active in the area it is currently one of our patrol hotspots. Unfortunately, I am unable to use the full range of legislation available to me at present, because I have to demonstrate in law that any legal control measures I might authorise are proportionate and do not adversely affect the rights of people in the area - and for this I need to be able to demonstrate the size of the problem. So, my plea to residents is to please report incidents when you see them happening. I can see the chatter on social media forums, but very few of the incidents mentioned in the various chat groups actually get reported to us. The more you report, the more easy it is to justify deploying resources into the area. Please help us to help you.

Staff Changes

- PC Barry Winter is your new Beeston Beat Manager
- PC Emily Hart is your new Chilwell Beat Manager
- PC Beck Wilson has replaced Paul Toon at Broxtowe North who has retired after many years dedicated service.



NOTTINGHAMSHIRE
POLICE
PROUD TO SERVE

Off - Road Motorcycling

Unfortunately, we do not have a specialist immediate response capability across the force for this problem and the off-road team are very much a finite resource. With the widespread nature of off-road biking complaints across the force area, it is not possible for this team to be in all places at all times the calls are made. I currently have one member of my beat team who is a trained off-road motorcyclist in PC Barry Winter and in the past month the team has run operations in Broxtowe South. Similar operations are planned for Broxtowe North. I know that Barry has been in touch with a number of concerned residents and as with all longer-term issues though, we will be linking in with our partners at Broxtowe Borough and Nottinghamshire County Councils to ensure a multi-agency, problem solving approach to this ongoing issue.

IMPORTANT CONTACTS

To find out about crime in Broxtowe check out the Neighbourhood Alert System at

www.nottswatch.co.uk

or visit the Nottinghamshire Police website at

www.nottinghamshire.police.uk

In an emergency or to report a crime in progress contact the police on **999**.

To report information and suspicious activity contact the non-emergency Nottinghamshire Police number **101**.

To report crime anonymously contact Crimestoppers on **0800 555 111**



Get in touch

Beeston Police Station

Ext: 310 2235 Mob: 07702 141736

simon.riley@nottinghamshire.pnn.police.uk

Working together to reduce crime

The South Nottinghamshire Community Safety Partnership continues to work hard to reduce crime across South Nottinghamshire. Measures used to reduce crime include amongst others, high-visibility policing, covert operations, CCTV surveillance and security patrols.

By raising awareness and increasing vigilance we can all help to reduce crime.





Could you spot the slave next door?

Unfortunately slavery is not a thing of the past and often the people who become victims are some of the most vulnerable people in society. By recognising some of the common signs, your intervention could help set them free from a life of fear and desperation.

- **Physical Appearance** – signs of physical or psychological abuse, malnourished or unkempt, appear withdrawn and neglected, may have untreated injuries.
- **Isolation** – rarely allowed to travel alone, seem under the control or influence of others, rarely interact or appear unfamiliar with where they live or work.
- **Poor living conditions** – dirty, cramped or overcrowded accommodation, and/or living and working at the same address.
- **Restricted freedom of movement** – no identification documents, few personal

possessions, always wear the same clothes. Clothes may be unsuitable for their work. Travel documents retained.

- **Unusual travel times** – dropped off / collected for work on a regular basis either very early or late at night.
- **Reluctant to seek help** – Avoid eye contact, appear frightened or hesitant to talk to strangers and fear law enforcers. Fear of deportation and violence to them or their family.

Report a case of modern slavery contact or Human Trafficking by calling the Modern Slavery helpline 0800 0121 700 or visit www.modernslaveryhelpline.org/report. If it's an emergency, call the Police on 999.



Is Your Home Secure This Summer?



Before you go on holiday

- Make your home look lived in. Perhaps a trusted person could collect your post, cut your lawn and even park their car on your driveway
- Avoid discussing forthcoming holiday plans where strangers may find out details of your absence, this includes social media.
- Lock all doors and windows, if you have a burglar alarm remember to set it!

In the garden

Power tools, lawn mowers, garden tools and bikes are just some of the expensive equipment stored in sheds which are not strong or secure enough to protect them.

If stolen some of these items could be used by the intruder to break into your house so make sure

they are locked away somewhere secure.

For more tips on keeping your home safe, visit Nottinghamshire Police's Advice Centre <https://www.nottinghamshire.police.uk/advice>



**Home
START**
Support and friendship
for families

Calling all
volunteer parents...

Could you help make a difference for struggling families?

Many parents need help, friendship, advice or support during those early years when their children are young. Your experience as a parent can help them.



Find out about training to volunteer with us:
www.home-start.org.uk
or freephone 0800 068 63 68,
or contact your local Home-Start:

Home-Start Nottingham
2 First Avenue
Sherwood Rise
Nottingham NG7 5LJ
Telephone: 0115 962 4262

Home-Start is a registered charity. Home-Start is a company limited by guarantee, registered in England. Registered office: 2 First Avenue, Sherwood Rise, Nottingham, Nottinghamshire, NG7 5LJ.

Need to See a Doctor? Grange Farm Medical Centre

Daily Drop-In Clinic 10am to 11.30 am

24 hour internet and automated phone appointment system.

- Over 40s NHS Health Checks
- Sexual Health Screening
- Diabetes Clinic
- Weight Management
- Smoking & Alcohol Advice
- Blood Tests • Contraception
- Baby Clinic
- Travel Advice & Vaccinations
- Blood Pressure Checks
- C-Card Scheme Under 25s

www.gfmc.org.uk

0115 8965 002



**17a Tremayne Road, Bilborough
Nottingham NG8 4HQ**



GILLOTT'S
FUNERAL DIRECTORS

Gillotts Funeral Directors is an independent family business with five funeral homes serving a wide area. Our dedicated team are there when you need us.



*We are proud to be Members of the
National Association of Funeral Directors*

Our Funeral Homes:

1a Abbott St, Heanor DE75 7QD, Tel: 01773 713921

133 Nottingham Rd, Selston NG16 6BT, Tel: 01773 306909

136 Derby Rd, Stapleford NG9 7AY, Tel: 0115 949 1534

The Old Church, Main St, Kimberley NG16 2LL, Tel: 0115 938 6720

154 Nottingham Rd, Eastwood NG16 3GG, Tel: 01773 713484

www.gillotts.co.uk



Heanor



Selston



Eastwood



Kimberley



Stapleford

SERVING FAMILIES FOR GENERATIONS



*"We want to be
remembered
with a smile"*

Make sure your funeral celebrates
your life the way you want it to with
a Perfect Choice Funeral Plan from
Gillotts Funeral Directors

Flexible plans Financial security
Instalment options Friendly local advice

Broxtowe Borough Council

Useful addresses and telephone numbers

COUNCIL SERVICES

Council Offices
Foster Avenue
Beeston, NG9 1AB

Kimberley Depot
Eastwood Road, Kimberley, NG16 2HX

All above offices
Tel 0115 917 7777
www.broxtowe.gov.uk

COUNCIL HOUSING REPAIRS

Daytime and out of hours
Tel 0115 917 7777

OTHER USEFUL SERVICES, ADDRESSES & TELEPHONE NUMBERS

Citizens Advice Broxtowe
Council Offices
Foster Avenue, Beeston NG9 1AB
Tel 0844 499 1193
bureau@eastwood.cabnet.org.uk

Citizens Advice Broxtowe
Library & Information Centre
Wellington Place, Eastwood NG16 3BG

Tel 0844 499 4194
bureau@eastwood.cabnet.org.uk
www.citizensadvice.org.uk

Age UK
0800 169 6565

Consumer Direct
08454 040506

NHS Advice
24 hour Nurse & Health Advice
Tel 111

Nottinghamshire County Council
Tel 0300 500 8080

Voluntary Action Broxtowe
Oban House
8 Chilwell Road
Beeston, Nottingham NG9 1EJ
Tel 0115 917 8080

Eastwood Volunteer Bureau
Wellington Place (rear of Library)
Eastwood, Nottingham NG16 3BG
Tel 01773 535 255

The Helpful Bureau
39-41 Church Street
Stapleford, Nottingham NG9 8DB
Tel 0115 949 1175

Nottinghamshire Police
(Non-emergencies)
101

Crimestoppers
0800 555 111

Sure Start Children's Centre, Eastwood
0115 993 9750

D.H. Lawrence
Birthplace Museum,
8a Victoria Street,
Eastwood, NG16 3AW
Tel 0115 917 3824



Bramcote Leisure Centre
Derby Road, Bramcote, NG9 3GF
Tel 0115 917 3000

Chilwell Olympia Sports Centre
Bye Pass Road, Chilwell, NG9 5HR
Tel 0115 917 3333

Kimberley Leisure Centre
Newdigate Street, Kimberley, NG16 2NJ
Tel 0115 917 3366

www.lleisure.co.uk

Contact your local councillor, all details available on the website at www.broxtowe.gov.uk/yourcouncillor

केस कृने लि सकेसकेस किने सेर लम न देकेर किंग सेर कृने से उ किप कने 0115 917 7777 के सके लम सेरकेर से।

如果你需要此傳單用其他的形式或文字寫成，請撥電話 0115 917 7777 與我們聯絡。

اگر آپ چاہتے ہیں کہ یہ لیفٹ آؤٹ کو اردو زبان میں سمیٹا کیا جائے تو براہ مہربانی فون نمبر: 0115 917 7777 پر رابطہ کریں۔

If you need this leaflet in other formats or languages contact us on 0115 917 7777

This document is available in large print upon request.

TYPETALK - TEXT DIRECT

Typetalk's purpose is to bring the benefits of the telephone network to deaf, deafblind, deafened, hard of hearing and speech-impaired people.

Managed from a state-of-the-art centre, Typetalk's highly trained operators understand the special requirements of its customers and provide a warm, friendly service in complete confidentiality.

For Broxtowe Borough Council telephone **18001 0115 917 7777**.



Follow Broxtowe with social media

Keep up-to-date with the latest Council news, jobs and activities in your area by following Broxtowe Borough Council on your favourite social networking sites or sign up to the email alerts.

www.broxtowe.gov.uk/socialmedia



Broxtowe Borough Council
Foster Avenue, Beeston,
Nottingham, NG9 1AB
Tel 0115 917 7777
www.broxtowe.gov.uk

South Nottinghamshire
Community Safety Partnership
0115 917 3492

Broxtowe Borough Partnership
Tel 0115 917 3492
www.broxtowepartnership.org.uk



www.broxtowe.gov.uk