



Broxtowe
Borough
COUNCIL

Broxtowe matters

Autumn 2019

In this issue



Office space available
Page 17



Clean and Green
Page 14



Annual Performance
Summary
Page 18



Broxtowe's full of life

Residents in Broxtowe have been improving their physical and mental wellbeing so they can enjoy living life to the full. Read their stories on pages 12 and 13.



www.broxtowe.gov.uk

Local care from a local company

Call us on: **0115 9226116**

www.homeinstead.co.uk/Nottingham



The Studio at Padge Road

Living well with dementia and related disorders

A unique new concept in dementia care has come to Beeston. The Studio, at Padge Road, is an art centre designed so that people with dementia can try out new skills or practise familiar leisure activities with support.



Emma - Arts Coordinator

With provision for music making, singing, exercise, theatre, crafts and visual arts, The Studio is a place for people to 'connect and create', supported by professional ArtsCare Assistants. Meanwhile family carers can have a well-earned break.

The Studio's team of ArtsCare Assistants is led by professional artists Emma Wass and Sarah Griffiths-Wright, who devise and lead a varied programme of individual and group-based creative pursuits tailored to



Sarah - Arts Coordinator

participants' abilities and interests. Everyone is fully assessed at the outset in a free, introductory session. No previous artistic experience is required; the principle is that human beings are all creative. For example, Emma is trained in the Timeslips technique, a storytelling approach that uses the inspiration of all present to weave a narrative. This shows powerfully that people with memory problems can still use their imaginations.



Carla - Operations Manager

Home Instead are proud to finance and support The Studio. We know that many of the people we support can greatly benefit from creative activities and having a local facility of this type will make a lot of difference to them and their carers.

A group of local dementia experts and family carers worked together to plan The Studio and formed a not-for-profit Community Interest Company to oversee its set up and development.

If you, a relative, a friend or somebody you support would like to join one of our tester sessions please call us on 07543 534336 or email: TheStudio@imagineartsdem.co.uk

A Perfect Match

Nicola, one of our amazing CAREGivers, is celebrating after receiving our CAREGiver of the month award following excellent feedback from Clients she visits.

We surprised Nicola with the award during one of her Client visits. Kath, who is supported by Nicola, was more than happy for us to come along on her visit to present the award to Nicola. Kath commented that "Nicola is very deserving and she looks forward to their shopping trips followed by a coffee and chat in the cafe afterwards.



Nicola was one of the first CAREGivers to meet Kath in May when she started to receive support from Home Instead. It is lovely to see the relationship they have built together in such a short time. Kath, like many other people Home Instead support, has really benefited from the visits of her CAREGivers, reducing the risk of social isolation and reassuring her family she is able to maintain her independence.

Dementia Friendly Communities - Home Instead Workshops

Research suggests that Dementia affects each individual in different ways however, even at late stages a person can understand what is going on around them. This in turn means that many people with Dementia can continue to live a relatively "normal" life as long as there is adequate support available, not just at home but in the community. This is where Dementia friendly communities can play a major part.

The concept is simple: to improve the quality of life for people with dementia and help them to become active members of the community.

At Home Instead in Nottingham, we have developed a comprehensive training program for our CAREGivers which covers all the aspects of Dementia and provides practical advice and techniques to help those suffering from the disease to continue to enjoy a good quality of life.

Part of this training is now being delivered as free workshops for families of those suffering from Alzheimer's and other Dementias or anybody who would like to find out more about the disease. If you would like to attend one of our seminars please contact us on 0115 9226116 or email: primo.sule@homeinstead.co.uk

We are looking for CAREGivers who can help us to assist people with non-medical services including
Companionship, Home Help and Personal Care in their own home.

Please call **0115 9226116**

email to recruitment.nottingham@homeinstead.co.uk



Homecare that's good enough for the Queen!

We are delighted to receive the Queen's Award for Innovation in recognition of our quality care



Getting in touch

Web visit www.broxtowe.gov.uk to pay and apply for services online

Email customerservices@broxtowe.gov.uk

Call 0115 917 7777 other useful contacts on the back cover



/broxtoweboroughcouncil



@broxtowebc



/BroxtoweBC



Never miss out

Stay up to date by signing up to our free email newsletters and choose what you want to be kept informed about.

Sign up now at www.broxtowe.gov.uk/emailme

Editorial: Broxtowe Borough Council's Corporate Communications Team

Design and Print: Systematic Print Management

Distribution: Royal Mail

Cost: 18p per copy

Broxtowe Matters is printed on environmentally friendly paper, please recycle it after reading.

Advertising is sourced by Spot On Media Ltd and the Council does not endorse any of the products or services advertised.

We welcome your comments and views – just get in touch at press@broxtowe.gov.uk or call 0115 917 3825.

Also in this issue...

Community News
P4



Business Growth
P16



Housing
P10



Annual Performance
P18



Health: Live Well
P12



Community Safety
P20



Environment
P14



Useful Contacts
P23



Introduction

Over 500 of you took part in our recent **Let's Talk Broxtowe Consultation** to help us shape our new Corporate Plan and tell us where we should spend and save money. The Plan will set out our ambitions for the next four years and what we'll do to achieve them.

Six roadshows took place across the Borough, where Elected Members and Officers got some really useful feedback to help inform future plans. A survey was also run online and in the Council Offices reception and local groups were contacted directly asking them to participate.

This is the largest consultation the Council has undertaken for some time so it's really encouraging to see so many local residents getting involved and wanting to make a difference in their local community. **Thank you to everyone who took part and congratulations to the winner of our prize draw!**

We're now busy looking at the results and drafting the Plan – look out for more information very soon.

All Councils continue to face financial challenges and Broxtowe is no exception. Since the start of the 2019/20 financial year, the Council no longer receives any grants from the government – in 2015/16 we received £2 million.

This means we need to find new ways of funding services by generating income through commercial activity or through fees and charges and we need residents to help us along the way by doing their bit in the local area. You can read our annual performance summary for 2018/19 on page 18.

With winter on its way, enjoy the many festivities which will be taking place over the coming weeks and take care of those who may need a little extra help during the colder months.



Ruth Hyde OBE
Chief Executive



Councillor Milan Radulovic MBE,
Leader of the Council



Councillor Steve Carr, Deputy Leader of the Council





Council Committees

The Council has Committees which make decisions about services or which have delegated powers to make decisions based on law. Most committees are public meetings so members of the public are welcome to attend.

At certain meetings, like Full Council Meetings, members of the public can ask questions by prior arrangement.

Agendas, minutes and meeting dates are published on our website at www.broxtowe.gov.uk/committees and decisions for many of the committees are shared on our Twitter account @broxtowebc.

You can find contact details for your local Councillor at

www.broxtowe.gov.uk/yourcouncillor

Committee Chairs



Alcohol and Entertainments Licensing and Appeals Committee
Councillor David Bagshaw



Community Safety Committee
Councillor Pat Lally



Environment and Climate Change Committee
Councillor Helen Skinner



Leisure and Health Committee
Councillor Ian Tyler



Finance and Resources Committee
Councillor Greg Marshall



Governance, Audit and Standards Committee
Councillor Elizabeth Williamson



Housing Committee
Councillor Teresa Cullen



Jobs and Economy Committee
Councillor Tim Hallam



Personnel Committee
Councillor Marie Hannah



Planning Committee
Councillor David Watts



Policy and Performance Committee
Councillor Milan Radulovic MBE

JOHN FLYNN OPTICIAN ESTD.1938

1a Devonshire Avenue, Beeston,
Nottingham, NG9 1BS

Monday to Friday from 9am to 5.30pm
Saturday 9am to 5pm

Established in Beeston, Nottingham over 70 years ago, John Flynn Opticians is located on the corner of the leafy Devonshire Avenue and Chilwell High Road (opposite corner to Ellis-Fermor & Negus Solicitors).

Director and senior Optometrist at John Flynn Opticians, Dr Sheeraz Janjua is one of only 25 Optometrists in the UK to be awarded the degree of Doctor of Optometry from Aston University for his research in Dry Eye Syndrome. He was also one of a select few nominated for the Optometrist of the Year award in 2018. Having been at the helm in Beeston since 2016, Dr. Janjua provides both private and NHS patients with the option to benefit from an enhanced eye examination using an OCT instrument to produce macular, retinal and optic nerve scans to aid early diagnosis of various ocular conditions.



With over 45 years of experience between us we have 2 goals:

Provide a friendly, welcoming, homely environment with a passion for great customer service and to combine the best ophthalmic lenses from some of the most respected lens manufacturer's alongside some of the finest hand-made frames from around the world.



We believe that the best spectacle frames are made by companies who just make spectacle frames. Sounds obvious?

Most 'designer' spectacle brands originate from popular fashion brands lending their name to a range of mass-produced frames, usually made in China from cheap materials. We stock handmade frames made by expert manufacturers, largely in France, Italy and Japan. The quality of these frames speaks for themselves. We also have a range of beautiful frames at a lower price point, so you can have a pair for every outfit!

One of our most popular lens ranges year round but especially during the darker months are our Drive specific Lenses from Zeiss, Hoya, Tokai and Essilor.

For motorists that drive mainly in the evening we would recommend the Night Drive lens from **Tokai** or the **Enroute Pro** from **Hoya**.

We also supply the new **Nikon Seecoat Drive** an everyday lens coating with enhanced driving performance that can be paired with their finest lenses and available with **Transitions/Transition XTRActive**.

We also dispense specialist lenses for people with vision loss related to Glaucoma, Retinitis Pigmentosa, Diabetic Retinopathy and Macular Degeneration (AMD). These special lenses change the direction of light to alternative healthier parts of the retina. Combined with a special filter to improve contrast - they have been a huge success with our patients.

Don't take our word for it - here's what our patients are saying about us:

"I was recommended to go to John Flynn Optician by family members. I love everything about the practice and I will now only ever use John Flynn's. The glasses are well made, well fitted and I can see much better. My eye examination with Dr. Janjua was very informative and he put me at ease - very good. All the team at John Flynn's have treated me well and I cannot fault them."

"I'd heard that the glasses were great quality and the service was great at John Flynn Optician. The staff have been very helpful and gave me all the facts I needed. I love the personal touch and that you don't have to ask for help - it's just given. I love my new glasses - the style, the colour, the quality - everything. Dan and Annette have been brilliant from the minute I walked in the door. They are very friendly and provided perfect service in every way. I will be coming back and will share my experience with others."

"I came to John Flynn Optician through a recommendation from a friend and have never been to another opticians. My eye examination was thorough and explained to me very clearly. The team at John Flynn's are very helpful and cheerful. Carry on the good work."



Open Monday to Friday from 9am to 5.30pm. Saturday 9am-5pm

John Flynn Opticians welcomes the registration of new patients and parking is available in the practice's own car park.

Telephone 0115 9255051 to make an appointment. enquiries@johnflynnopticians.co.uk www.johnflynnopticians.co.uk



Want to stay up to date with the latest news and arrivals?
why not follow us on **Instagram** and **Facebook** @johnflynnopticians

0115 925 5051





Need help getting out and about?

If you have mobility issues and need help getting out and about in Beeston, Beeston Shopmobility can help.

Buying your own mobility scooter can be expensive but with Beeston Shopmobility you can hire one for 2 hours, weekly or even longer term to take on holidays in the UK or if you are recovering from an operation.

Dave Tonge who uses the service says: "This is a great service that enables people to get out and about. I find this service invaluable and the volunteers are very friendly and helpful."



**For more information,
contact Beeston Shopmobility
on 0115 925 972.**

How often do you test your smoke alarm?



Did you know that you are twice as likely to die in a fire if you don't have working smoke alarms?

Smoke Alarm Tips:

- Test them regularly.
- Replace batteries if your smoke alarm beeps intermittently.
- If you have a 10-year alarm, replace the WHOLE alarm every 10 years.
- Fit a working smoke alarm on every level of your home.
- Place smoke alarms in the middle of rooms or hallways, at least 30cm from walls and light fittings.
- Avoid smoke alarms in kitchens and bathrooms and instead fit heat alarms.
- Check your alarms have the British Kitemark BSEN14604: 2005 on them.
- Never ignore a bleeping smoke alarm - this could save your life.

Visit www.notts-fire.gov.uk/staying-safe for more fire safety advice.



**YOUR VOTE MATTERS
DON'T LOSE IT**



**Being on the electoral register
can help you get a mobile
phone contract or other credit**

Register to Vote today

www.gov.uk/register-to-vote





Part 2 Local Plan

At the time of print, the Council is due to formally adopt the Part 2 Local Plan 2018- 2028 in late 2019.

The Plan is the result of many years of evidence gathering and consultation and has been through an Independent Examination undertaken by a Planning Inspector appointed by the Secretary of State.

The Part 2 Local Plan identifies sites for future development and details the policies that will be used to

determine planning applications until 2028, including housing, employment, heritage and green infrastructure. View the document at www.broxtowe.gov.uk/part2localplan



Lunch Club



The Helpful Bureau look forward to welcoming you to lunch at St. Helens Church Hall, Stapleford. Every Thursday, from 11am - 2pm.



A Movement to Music session is also available 10am - 11am. After, there is a two course freshly prepared lunch. There will be activities such as, Bingo, quizzes and raffles.

So come along and meet new friends and find out all about our monthly trips and all the other services the Helpful Bureau provides.

For more information, contact Kaleigh on 0115 949 1175.



Volunteer with Broxtowe Youth Homelessness



Broxtowe Youth Homelessness is looking for volunteers to join its Management Committee as Trustees. The project delivers innovative homelessness prevention work across Nottinghamshire and Derbyshire.

They are looking for volunteers from a range of backgrounds who will use their skills and experience to ensure that the charity runs effectively.

For more information call 0115 939 6760, email enquiries@broxtoweyouthhomeless.org or visit www.broxtoweyouthhomeless.org.uk



BROXTOWE YOUTH HOMELESSNESS

VOLUNTEERING



Lifeline

GIVES YOU AND YOUR FAMILY PEACE OF MIND

24 hour support, when you need it from as little as £3.62 a week

www.broxtowe.gov.uk/lifeline





Dog owner? Scoop the poop!

Here in Broxtowe, we have pride in our local area so we're clamping down on those who fail to scoop the poop.

Dog mess contains lots of parasites which can be harmful to humans and can even cause blindness in extreme cases. It's also unpleasant for other local people to see and step in when they're out and about.

Your responsibilities

- Under the law, it is the responsibility of the dog owner or person in charge of the dog to clean up any dog mess. This applies to all public open land.
- If you don't, you could receive a fixed penalty notice of £50 and a fine of up to £1,000 if you don't pay.
- If you scoop your dog's poop but then throw the bag into a tree or the hedge rather than putting it into a bin, you can receive an additional fixed penalty notice for littering of £75, with a maximum fine of £2,500 for non-payment.

If you would like to make a dog fouling complaint, please report it to the Neighbourhood Wardens by email, neighbourhood.wardens@broxtowe.gov.uk or on our Love Broxtowe website www.broxtowe.gov.uk/lovebroxtowe or on 0115 917 7777.



Reading Friends



Do you like having a read, a chat and a cuppa? Then come along to a free Reading Friends session at Beeston Library! Reading Friends is a new UK-wide programme delivered by charity, The Reading Agency, working in partnership with local organisations.

Reading Friends brings people together to read aloud, share stories, meet new friends and enjoy themselves. They use reading to start everyone chatting and unlike a reading group, there is no set text so you don't need to prepare anything and can just come to whichever sessions you want.

Beeston Library will be running regular sessions in partnership with Hope Nottingham from November 2019.

Contact ask@inspireculture.org.uk or 01623 677200 to find out more or visit www.readingfriends.org.uk.



Inspire
Culture | Learning | Libraries



Asylum Helpline

There's a new helpline for asylum seekers living in the Midlands or East of England.

The helpline number is 0808 8010 503 or visit www.migranthelpuk.org





Season of Lights

Broxtowe's Community Celebration "Season of Lights" event will return on Saturday 30th November between 2.00pm and 4.00pm at Beeston Methodist Church.

The afternoon of culture, music, dance, arts and crafts will bring together diverse communities to celebrate several festivals from around the world including Milad, Advent, Diwali, Hanukkah and those from Chinese and Russian cultures.

The event is free and there's no need to book. Children must be accompanied by a responsible adult.

For more information, please contact the Broxtowe Community Celebration Group via Facebook or email Saj at Sajada.akbar@broxtowe.gov.uk



Volunteer for Broxtowe Women's Project's Wellbeing Team



Broxtowe Women's Project supports women and families who have experienced Domestic Abuse via a Wellbeing programme. Monthly wellbeing themed activities are held to encourage healthy lifestyles and provide an opportunity for people to get together to build skills and confidence.



They are looking for volunteers to join their team as Befrienders to support the programme. Full training is provided.

Contact
enquiries@broxtowewp.org
or 01773 718 555
for more details.

VOLUNTEERING

Children's Centres



Broxtowe has three children's centres in Beeston, Eastwood and Chilwell, offering a range of services for families with children aged 0-5 years. Find out more at www.nottinghamshirehealthcare.nhs.uk/ccs

They are also looking for a range of volunteers in roles including welcome volunteers, breastfeeding peer support, early years, admin and perinatal support. Contact Chilwell on 0115 933 5780 or Eastwood on 0115 993 5750 for more information.



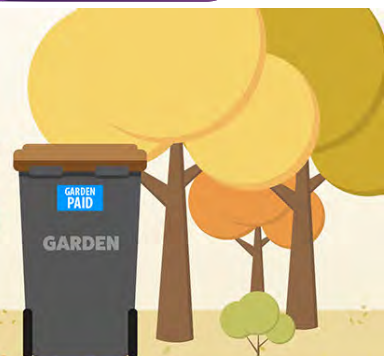
VOLUNTEERING

WINTER DISCOUNT

If you haven't done so already why not sign up to the garden waste scheme for the remainder of the 2019/20 season

£28 for 1 bin

£8 for each additional bin



www.broxtowe.gov.uk/gardenwaste



Dementia Bungalows

Planning permission has recently been granted for two dementia bungalows on the site of the former Beeston market.

The bungalows have been designed to support the needs of those affected by dementia including ensuring appropriate colours, contrasts and visual aids to make different areas easily identifiable.

They will also be wheelchair accessible, include a secure, external charging point for a mobility scooter and have sensory garden space. Work is expected to start early next year.



Looking to sell your property?

As part of our Housing Delivery Plan, the Council is looking to buy properties to add to our Council housing stock. Our priority is to purchase homes that were formally Council houses or similar properties within the Council's management areas but we will consider any opportunity.

For more information please contact the Housing Strategy team on 0115 917 3441 or housing.strategy@broxtowe.gov.uk.



Looking for a property?

The easiest way you can find and apply for a Council property is by using our Homesearch website at www.home-search.org.uk



To register for an account, you'll need to provide proof of identification and supporting documents to enable your application to be processed.

If you are unable to bid online, you can use the automated telephone service on 0300 011 0311 or contact the Lettings Team on homesearch@broxtowe.gov.uk

For more information visit www.broxtowe.gov.uk/findahome, where you'll find more advice and answers to FAQs.



Doing it online doesn't have to be difficult

Did you know you that you can do everything from paying your rent to applying for a property online?

Tenants can complete the following services online:

- Find a property www.home-search.org.uk
- Apply for a garage www.broxtowe.gov.uk/garageapplication
- Pay your rent or garage rent www.broxtowe.gov.uk/estore
- Report a non-urgent housing repair www.broxtowe.gov.uk/repairsrequest
- Terminate your tenancy www.broxtowe.gov.uk/tenancytermination
- Terminate your garage tenancy www.broxtowe.gov.uk/garagetermination





Enjoy your retirement at an Independent Living scheme...



Over 60 and looking for a new home? Broxtowe's Independent Living Service provides you with the support you need to live independently, whilst you enjoy everything retirement has to offer.

Moving in to one of our Independent Living properties gives you peace of mind with:

- Personalised Independent Plans (I-Plans) so Independent Living Co-ordinators can support you in maintaining your independence.
- Communal facilities, such as a lounge, laundry room and hairdressing room in most schemes.
- Regular activities.
- A Lifeline calling system linked to a 24 hour response centre, staffed by trained operators who are available seven days a week.
- Convenient locations throughout the Borough, which are close to social, transport and shopping facilities.

Social Activities

Dedicated Activities Co-ordinators and partner organisations arrange social activities, designed to help you lead a full and active life including:

- Cooking demonstrations
- Memory lane discussions
- Craft classes
- Fun fitness
- Walking groups
- Games sessions



Tenants really enjoy the activities and their family members often comment on how nice it is to see their loved ones getting involved and socialising.

Properties Available Immediately

Gutersloh Court, Stapleford.

- Ground and first floor flats with internal corridor access and bungalows located nearby
- Laundry room
- Guest room for family and friend visits from just £18
- Parking
- Lift
- Pets allowed in bungalows by prior agreement
- Convenience store next door to the scheme
- Close to Stapleford Town Centre
- Good transport links and bus services
- Near to GP surgeries



Older Persons Week

Independent Living Schemes opened their doors in October as part of Older Persons Week to find out what it's like to live in Independent Living.

As part of our theme "The Age of Active Living," chair based exercise, craft sessions and boccia as well as blast from the past memory lane taster sessions were on offer. There was also guided tours of the facilities and accommodation and of course, plenty of tea and cake.



Visit www.broxtowe.gov.uk/independentliving or call 0115 917 3347 to discuss your options.



Live Well

Whether its joining the gym, giving up smoking, getting support for m different to everyone. Get inspired by some of our stories and service

Eastwood Wellbeing Hub



The Eastwood Wellbeing Hub has recently been set up at Eastwood Volunteer Bureau in partnership with the Council, Citizens Advice and MIND to promote mental health and well-being. It's open 10.00am until 3.00pm on Mondays, Tuesdays and Thursdays. **For more information contact Monisha on 01773768363 or email monisha.sharma@broxtowe.cab.org.uk**



Stapleford Food Project

In Stapleford, a food project set up by Stapleford Community Group has distributed over 23,000 meals worth of surplus food from local businesses to community groups and food banks. If you need support or would like to donate food, a list of food banks in Broxtowe is available at www.nottshelpyourself.org.uk



Smoke Free Life



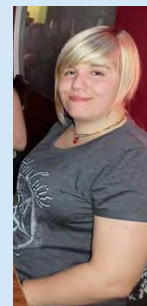
Smokefreelife Nottinghamshire and Vapouround visited the Montrose Court area in Stapleford in May to offer support and advice to anyone wanting to quit smoking. 52 vape starter kits were given out and feedback from residents has been positive, with many supporting each other on their journey to a smoke free life. **To get advice and support about stopping smoking call Smokefreelife Nottinghamshire on 0115 772 2515 or text QUIT to 6677. www.smokefreelifenottinghamshire.co.uk**



"Have a go and see what happens, there's no harm in trying."



Zoe is 23 and lives in Kimberley. After struggling with her mental health and her eating habits, Zoe rekindled her love of swimming at Kimberley Leisure Centre and has transformed her body and her mind.



Before

It makes me feel refreshed for when I get to work and the calming effect the water has on me has also squashed a lot of my anxiety. Sometimes the time in the pool helps me reflect and just de-clutter my mind for a while. I now take part in events and I feel like I'm developing into a better person. My mental health is so much better having found a way to work things out through exercise and I've become part of an amazing group of people who support each other, known as the Kimbo Specials! All in all life is better and I feel like I'm truly living not just existing.



After

"Life as a disabled fitness advisor"

Aston Johnson is a fitness advisor at Kimberley Leisure Centre who has Cerebral Palsy. Aston's written a blog about what it's like to be a disabled fitness advisor and how he got into the fitness industry. Visit www.lleisure.co.uk/blog/my-journey-into-the-fitness-industry to read more about his story and other inspiring blogs about getting into fitness.





mental health or getting outside, living life well will mean something
s below...

Improve your wellbeing outdoors

Becky Daykin is part of a volunteer group who install nest boxes at Bramcote Hills Park to help provide homes for birds and aid research for the British Trust for Ornithology.



"I've loved helping with the project, from building the boxes to seeing the chicks fledge. Being mindful in nature together with a lot of walking and climbing has made a noticeable improvement to my health and well-being."

VOLUNTEERING

Weight Management Service



Everyone Health is a FREE 'Integrated Obesity Prevention and Weight Management Service' commissioned by Nottinghamshire County Council that is available to Nottinghamshire residents. They offer adult weight management, services for adults, families, expectant mothers, falls prevention and health walks.

everyone
HEALTH



For more information call 0333 005 0092 or email changepointnotts@everyonehealth.co.uk

How's your heart?



Everyone is at risk of developing heart disease, stroke, diabetes, kidney disease and some forms of dementia. The good news is that these conditions can often be prevented.



If you are aged between 40 and 74 years and have not already been diagnosed with any of these conditions or had an NHS Health Check in the past 5 years you are entitled to a free NHS Health Check at your GP surgery.

Don't wait - contact your GP to make an appointment for your free NHS Health Check now.

Keeping active with friends

Glenyis Stokes, Yvonne Culley, Norah Mellors and Pat Bennett attend fitness classes at Cloverlands Court in Watnall, one of the Council's Independent Living Schemes.

"Living on your own can be lonely so the classes are great for being able to chat with other people and we've already seen an improvement in our physical fitness, with less aches and pains."

The classes are just one of the many activities on offer for residents at our Independent Living Schemes. Turn back to page 11 to find out more about Independent Living.



Feeling inspired?

If you're interested in seeing what activities and groups are out there for you to get involved with, www.nottshelpyourself.org.uk has information about a whole range of services that are available across Nottinghamshire. If you're a local group or organisation, you can also register your details on the site for others to find.

You can also visit the What's On Where calendar to see activities coming up in Broxtowe – simply visit www.broxtowe.gov.uk/wow



Clean and Green

Pride in Parks



Our Pride in Parks scheme pledged £250,000 last year and again this year to improve parks and open spaces in the Borough.

Recently completed schemes

- **Hickings Lane Recreation Ground, Stapleford**
£165,000 refurbishment of the play area and multi-use games area thanks to the Pride In Parks scheme, as well as additional external funding.



- **The Lane Recreation Ground, Awworth**
Full refurbishment of the cricket pavilion, jointly funded by Pride in Parks, The English Cricket Board and Awworth Parish Council.
- **Trowell Parish Hall**
New Play equipment and outdoor sports facilities have been installed with a party to celebrate the improvements held in August.

- **King George V Park, Bramcote**
Work is underway on a £120,000 scheme to provide a new play area, an outdoor fitness area and to improve access at this popular local park. £50,000 funding from FCC has helped support the scheme.
- **Sherman Drive, Chilwell**
The play area has been refurbished to include new equipment for younger children and new rubber safety surfacing to make the area more accessible.

Coming Soon

- **Hall Om Wong, Kimberley**
A bid is being submitted to FCC for £50,000 of improvements. This will allow the play area to be extended to include additional items of equipment for younger children. If the bid is successful, work will be undertaken in spring 2020.

The next play areas identified in the Play Strategy for improvements are:

- Dovecote Lane Recreation Ground, Beeston
- Bramcote Hills Park, Bramcote
- Jubilee Park, Eastwood
- The Spinney Open Space, Nuthall
- Pasture Road Recreation Ground, Stapleford
- Banks Road Open Space, Toton
- Swiney Way Open Space, Toton

Watch this space for updates next year...

Educating the next generation

This summer our Recycling Team have visited seven schools so far to teach them about recycling and how they can protect the environment for the future and we'd love to visit your school. Feedback from these sessions has been excellent so if you'd like to arrange a visit for your school or group please get in touch on recycling@broxtowe.gov.uk





Community Clean Teams



14 litter picks have now taken place thanks to 250 residents joining our Community Clean Teams to help us keep Broxtowe clean and tidy.

The Council can help by lending equipment and there's a resource pack on our website to help you plan your litter pick at www.broxtowe.gov.uk/cleanandgreen

If you're already organising your own litter picks to keep Broxtowe clean and green, tag us in your photos on Twitter @broxtowebc or get in touch as we'd love to share your efforts and say thanks for all you do.

Helping nature thrive

Did you notice some of the beautiful wildflowers in bloom across the Borough this summer? The wildflowers, sown at various sites, provided a vibrant splash of colour including the cascade of flowers at Hall Om Wong in Kimberley. We hope to extend this scheme to other areas next summer and include areas of highway verges as well as parks and open spaces. The flowers are very valuable for bees and pollinating insects and provide a habitat for wildlife.



Five Green Flag Awards

Five Broxtowe open spaces have retained their Green Flag awards in recognition of their high standards of maintenance and facilities.

Bramcote Hills Park, Colliers Wood in Moorgreen, Alexndrina Plantation/Sandy Lane in Bramcote, Brinsley Headstocks and The Old Church Tower in Bramcote celebrated their success in July when the awards were announced.

Green Futures

The Council has recently committed to becoming carbon neutral by 2027.



We've already made good progress by using lots of recycled materials in our parks and open spaces, rolling out our first electric vans and improving homes and buildings to make them more energy efficient but there's more work to be done.

We're going to be working hard on our Green Futures projects over the coming months and years to reduce our carbon footprint further. Find out more at www.broxtowe.gov.uk/greenfutures



What we need from residents

- ✓ Recycling – reduce contamination and increase recycling by putting the right waste in the right bin. Remember, recyclable doesn't always mean these items can go in your Broxtowe green lidded bin.
- ✓ Use public transport if you can.
- ✓ Looking after and respecting the local area for the future by not littering or fly-tipping and picking up after your dog.
- ✓ Set up Community Clean Teams to keep the area clean and tidy.



Support local schools with careers



Are you interested in helping local schools with their careers and employability programmes?

Would you like to contribute to your CSR?

Would you like to learn about potential future employees and help shape careers programmes in local schools?

Support your local school or college to deliver world class careers guidance to their students, enabling young people to be prepared and inspired for the fast-changing world of work.

You'll be supported by a trained, full-time Enterprise Co-ordinator and a range of practical resources, as well as receiving peer support from other volunteers.



Getting involved is simple

email Caroline.Tomlinson@the-futures-group.com

call 07918 906150

visit www.careersandenterprise.co.uk

Kimberley Business Network

A new business network has been set up in Kimberley for businesses across north Broxtowe.

The network launched in August and is proving to be a great way for businesses to work together on the challenges facing local business, as well as an opportunity to make business contacts in the local area.

If you'd like to join the network contact economic.development@broxtowe.gov.uk



Get businesses news and event updates by signing up to the email me service at www.broxtowe.gov.uk/emailme. There you can sign up to business specific information on the topics you chose.

You can also visit the local town centre websites at:

- www.kimberleynow.com/
- www.eastwoodnow.com/
- www.staplefordnow.com/





Office space to help your business grow

Working from home but finding you need more space? Wanting to separate your home and work life? Start up with one or two members of staff and need a stepping stone? Beeston Business Hub could be the perfect location to grow your business. There are currently two units available with eight individual offices of varying sizes.

Great location

- Centrally located in Beeston Town Centre, just seconds from the new Beeston Square development.
- Good public transport links with Beeston Central tram and bus interchange less than a five minute walk away.
- Only ten minutes drive from the M1 North and South.

Great facilities

- Wi-Fi.
- Kitchen space complete with fridge, microwave and kettle, as well as storage space for your own kitchenware.
- Intercom system.
- Waiting area for visitors within the offices.

Great support

Beeston Business Hub not only offers space for businesses to work from, but also provides a whole range of advice and support should you need it, from help navigating the Council and its requirements, to accessing grants and funding available in the area.

For more information and to book a viewing please contact our Senior Economic Development Officer on 0115 917 3826 or email economic.development@broxtowe.gov.uk



"The Hub is fantastic, it's gives you all you need at an affordable price."



Trevor Woolery owns Create Animate, a creative company who train people in transformative creative thinking and creative tools. He has rented space in Beeston Business Hub since December 2018.

"I originally tried to work from home, but interruptions by my family made it difficult to concentrate. The Hub has provided me with an affordable space to focus on my business at more than half the price I previously paid when I rented space in the centre of Nottingham. The space is a generous size and I love the location in Beeston, surrounded by café's and shops, as well as having the Post Office and banks nearby too. I chose Beeston Business Hub as I liked the idea of being around other businesses who are on a similar journey to me. Starting a business can be challenging at times and having a business neighbour to share experiences with has helped so much."

Find out more about Create Animate at www.createanimate.co.uk





2018/19 Annual Report Summary

This summary outlines how we spent the money we received from the Council Tax you pay, business rates, Government grants and other income we received during the 2018/19 financial year.

General Fund

Day to day running costs of Council services (except Council Housing) e.g. salaries, transport, general office running costs and income from fees and charges.

The Council spent a net £0.09m less than it received in funding and £0.43m less than it planned to spend.

How the money was raised

£5.4m from Council Tax

£3.8m from our share of Business Rates

£0.4m Revenue Support Grant from Government

£0.04m from our share of additional Council Tax collected in previous years

**Total Income:
£9.7 million**

Where the money was spent

Environment
£4.2m



Health
£2.1m



Community Safety
£2.3m



Business Growth
£0.8m



Revenues, Benefits & Customer Service
£0.8m

Housing
£0.2m

Resources



Income exceeded expenditure in 2018/19 by £0.88m. Resources relates primarily to the expenditure and income (including recharges) associated with the Council's central support functions.

The Budget Challenge

Broxtowe Borough Council is still facing a huge financial challenge. The increasing demand for services, rising costs and reduction in government funding are the main contributory factors impacting upon the ability to balance the budget. The Government has phased out the Revenue Support Grant it provides to the Council altogether, so we need to make some difficult decisions about where we spend and save your money.

Where does your Council Tax go?

Council Tax is set annually and the money you pay is used to fund local services. Around 8% of your Council Tax goes towards funding services provided by Broxtowe Borough Council. The rest goes to Nottinghamshire County Council, Nottinghamshire Police, Nottinghamshire Fire and Rescue and your Parish Council.

We collect Council Tax for all of these organisations but each is responsible for deciding its own rates. Based on a Band D equivalent:

£1,476.06 goes to Nottinghamshire County Council

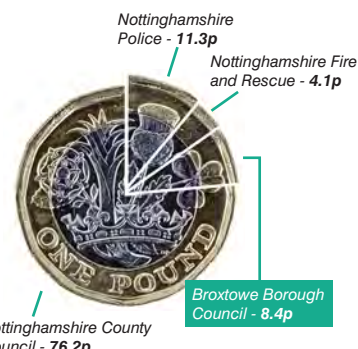
£219.33 goes to Nottinghamshire Police

£161.85 goes to Broxtowe Borough Council

£79.80 goes to Nottinghamshire Fire and Rescue

Parish precepts vary between each Parish

Please note this is based on your 2019/20 Council Tax





More detailed information about the Council's finances can be found in the Annual Statement of Accounts at www.broxtowe.gov.uk/annualaccounts or from our Finance Team on finance@broxtowe.gov.uk or 0115 917 3228.

Capital Programme

Spending of a "one-off" nature on improvement projects such as housing modernisations, vehicles, equipment and software. This included £2 million on the housing modernisation programme and £1.3 million on gas heating replacement.

How the money was raised

£0.4m from new borrowing

£5.9m from internal funds

£0.8m proceeds from the sale of assets

£1.4m from grants and contributions

Total Income:
£8.5 million

Where the money was spent



£3.6m Council housing



£0.6m I.T systems and equipment



£0.1m Leisure Centre improvements



£0.3m Parks and recreation



£2.9m Other schemes



£0.8m Grants towards affordable housing and improvements



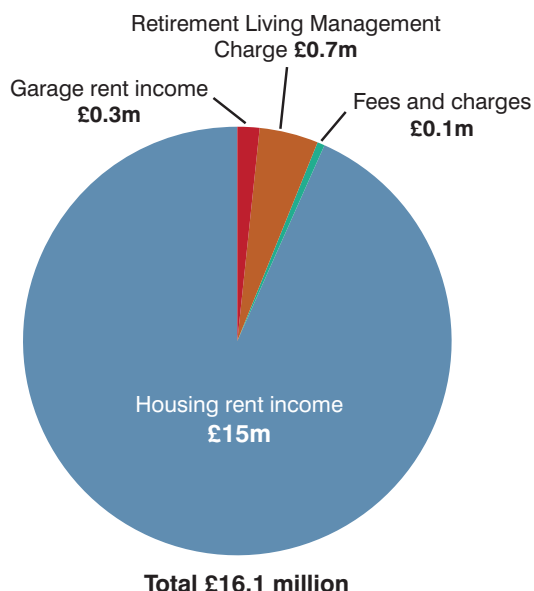
£0.2m New vehicles

Expenditure: £8.5 million

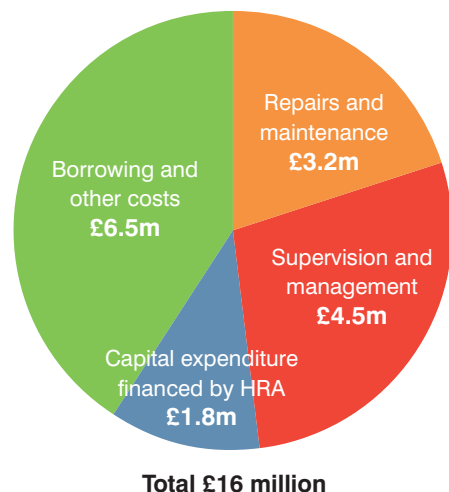
Housing Revenue Account

Day to day costs and income in respect of Council housing.

How the money was raised



Where the money was spent

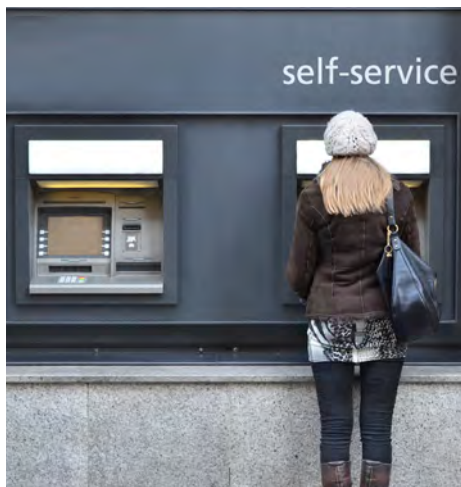




Stay Safe This Winter

During the darker nights and festive celebrations, follow these simple safety tips:

- Keep doors, gates and windows locked
- Invest in a security light/burglar alarm
- Don't leave Christmas presents on view
- Keep bags, purses and wallets secure
- Take care walking home, stick to well-lit areas and park in a car park displaying Park Mark signage www.parkmark.co.uk
- Don't use a cash point if you see anything suspicious
- Ensure your PIN cannot be seen
- Ensure someone knows where you are and when you'll be home
- Drink responsibly and don't drink and drive. Never accept drinks from strangers, don't leave drinks unattended
- Don't use unlicensed taxis



IMPORTANT CONTACTS

To find out about crime in Broxtowe check out the Neighbourhood Alert System at

www.nottswatch.co.uk

or visit the Nottinghamshire Police website at

www.nottinghamshire.police.uk

In an emergency or to report a crime in progress contact the police on **999**.

To report information and suspicious activity contact the non-emergency Nottinghamshire Police number **101**.

To report crime anonymously contact Crimestoppers on **0800 555 111**



Sign up for
Public Protection
email updates at
www.broxtowe.gov.uk/emailme

Working together to reduce crime



The South Nottinghamshire Community Safety Partnership continue to work hard to reduce crime across South Nottinghamshire. Measures used to reduce crime include amongst others, high-visibility policing, covert operations, CCTV surveillance and security patrols. By raising awareness and increasing vigilance we can all help to reduce crime.





Broxtowe Says No To Domestic Abuse

Teaching young people about healthy relationships



Equation deliver Equate in schools, a Big Lottery funded programme to teach young people about healthy relationships, consent and digital safety.

Teachers also benefit from a suite of support resources and twilight training sessions to raise their awareness of domestic abuse and how to support their young people. Two of the schools benefitting from this funding are Bramcote College and Chilwell School.

Equation will be further developing the programme to include having Healthy Relationship Ambassadors in schools and re-launching their young people's website Respect Not Fear. **For more information email anthea@equation.org.uk**



Make A Stand

The Council has joined the Chartered Institute of Housing's pledge to "Make A Stand". A special event attended by partners and the Mayor of Broxtowe, Councillor Michael Brown took place in September to discuss progress.

The Make A Stand pledge focuses on 4 key areas:

1. Put in place and embed a policy to support residents who are affected by domestic abuse.
2. Make information about national and local domestic abuse support services available online and in other appropriate places so that they are easily accessible for residents and staff.
3. Put in place an HR policy, or amend an existing policy, to support members of staff who may be experiencing domestic abuse.
4. Appoint a champion at a senior level to own the activity to support people experiencing domestic abuse.



Our homes, our people,
our problem.

Find out more at
www.cih.org/makeastand

White Ribbon Campaign



The Council is a White Ribbon Accredited local authority, working to end male violence against women. We're helping to promote the message that men must never excuse, commit or remain silent about male violence against women.



At Broxtowe, we have developed an action plan which includes working with local groups, employees, Elected Members and partnership organisations to raise awareness of Domestic Abuse and the White Ribbon Campaign.

Broxtowe Women's Project Mannequin Campaign

Last year, Broxtowe Women's project joined forces with businesses in Stapleford to house a special mannequin adorned with white ribbons in their shop windows, stitched with the helpline for ladies who feel that they need some domestic abuse support.



This year, two mannequins will be on display in Stapleford and Eastwood to mark 16 days of action from 25th November. There will also be a touring version. Look out for the mannequins on social media throughout November.



For more information about White Ribbon visit www.whiteribbon.org.uk

PERSONALISED CARE AND SUPPORT IN YOUR OWN HOME



CAREMARK
Broxtowe & Erewash
0115 943 6064



'Caring for others is our privilege'



- Companionship
- Medication support
- Attending appointments
- Personal hygiene and care
- Support with daily routines
- Shopping and meal preparations
- Private and publicly funded care packages available

www.caremark.co.uk/locations/broxtowe-and-erewash

LittleWOLF
entertainment

Derby's Pantomime Spectacular

J M BARRIE'S

Peter Pan

A NEW ADAPTATION BY
MORGAN BRIND

Emmerdale & Coronation Street's
BILL WARD
as Captain Hook

CBeebies Nina and the Neurons'
KATRINA BRYAN
as Tinker Bell

**FAMILY
TICKETS
AVAILABLE**

Sat 7 Dec - Sat 4 Jan

Derby Arena, just off the A52
£32.75 - £14.75

**BEST DAME
NOMINEE**
Great British Panto Awards
MORGAN BRIND
will be back!

derbylive.co.uk | 01332 255800

Derby City Council

Broxtowe Borough Council

Useful addresses and telephone numbers

COUNCIL SERVICES

Council Offices
Foster Avenue
Beeston, NG9 1AB

Kimberley Depot
Eastwood Road, Kimberley, NG16 2HX

All above offices
Tel 0115 917 7777

www.broxtowe.gov.uk

COUNCIL HOUSING REPAIRS

Daytime and out of hours
Tel 0115 917 7777

OTHER USEFUL SERVICES, ADDRESSES & TELEPHONE NUMBERS

Citizens Advice Broxtowe
Council Offices
Foster Avenue, Beeston NG9 1AB
Tel 0844 499 1193
bureau@eastwood.cabnet.org.uk

Citizens Advice Broxtowe
Library & Information Centre
Wellington Place, Eastwood NG16 3BG

Tel 0844 499 4194
bureau@eastwood.cabnet.org.uk
www.citizensadvice.org.uk

Age UK
0800 169 6565

Consumer Direct
08454 040506

NHS Advice
24 hour Nurse & Health Advice
Tel 111

Nottinghamshire County Council
Tel 0300 500 8080

Voluntary Action Broxtowe
Oban House
8 Chilwell Road
Beeston, Nottingham NG9 1EJ
Tel 0115 917 8080

Eastwood Volunteer Bureau
Wellington Place (rear of Library)
Eastwood, Nottingham NG16 3BG
Tel 01773 535 255

The Helpful Bureau
Carnegie Civic and Community Centre
Warren Avenue, Stapleford, Nottingham
NG9 8EY **Tel 0115 949 1175**

Nottinghamshire Police
(Non-emergencies)
101

Crimestoppers
0800 555 111

D.H. Lawrence
Birthplace Museum,
8a Victoria Street, Eastwood, NG16 3AW
Tel 0115 917 3824

Bramcote Leisure Centre
Derby Road, Bramcote, NG9 3GF
Tel 0115 917 3000

Chilwell Olympia Sports Centre
Bye Pass Road, Chilwell, NG9 5HR
Tel 0115 917 3333

Kimberley Leisure Centre
Newdigate Street, Kimberley, NG16 2NJ
Tel 0115 917 3366

www.lleisure.co.uk

Contact your local councillor, all details available at
www.broxtowe.gov.uk/yourcouncillor

ਸੇਵਾ ਕਰਨ ਵਾਲੇ ਸਾਰੇ ਸੇਵਾਗਤਾਂ ਨੂੰ ਇਹ ਜਾਣਨਾ ਚਾਹੀਦਾ ਹੈ ਕਿ ਉਹ ਸੇਵਾ ਕਰਨ ਵਾਲੇ 0115 917 7777 ਤੇ
ਸਹਾਇਤਾ ਮੰਗ ਸਕਦੇ ਹਨ।

如果你需要此傳單用其他的形式或文字寫成，請撥電話 0115 917 7777 與我們
聯絡。

اگر آپ چاہتے ہیں کہ یہ لیفلٹ آپ کو اردو زبان میں مہیا کیا جائے
تو براہ مہربانی فون نمبر: 0115 917 7777 پر رابطہ کریں۔

If you need this leaflet in other formats or
languages contact us on 0115 917 7777

**This document is
available in large
print upon request.**

TYPETALK - TEXT DIRECT

Typetalk's purpose is to bring the benefits of the telephone network to
deaf, deafblind, deafened, hard of hearing and speech-impaired people.

Managed from a state-of-the-art centre, Typetalk's highly trained
operators understand the special requirements of its customers
and provide a warm, friendly service in complete confidentiality.

For Broxtowe Borough Council telephone **18001 0115 917 7777**.



Follow Broxtowe with social media

Keep up-to-date with the latest Council news, jobs and activities
in your area by following Broxtowe Borough Council on your
favourite social networking sites or sign up to the email alerts.

www.broxtowe.gov.uk/socialmedia



**Broxtowe
Borough
COUNCIL**



Broxtowe Borough Council
Foster Avenue, Beeston,
Nottingham, NG9 1AB
Tel 0115 917 7777
www.broxtowe.gov.uk

South Nottinghamshire
Community Safety Partnership
0115 917 3492

Broxtowe Borough Partnership
Tel 0115 917 3492
www.broxtowepartnership.org.uk



www.broxtowe.gov.uk



2for1
from £69

with single-vision lenses
to the same prescription

Book an eye test at [specsavers.co.uk](https://www.specsavers.co.uk)

Beeston 4 The Square Tel 0115 951 8980

Eastwood 99 Nottingham Road Tel 01773 535777

Ilkeston 104 Bath Street Tel 0115 944 1401

Long Eaton 4-6 High Street Tel 0115 946 0450



Cannot be used with any other offers. Second pair from the same price range or below, and to the same prescription. Both pairs include standard 1.5 (or 1.6 for £169 Rimless ranges) single-vision lenses. Varifocal/bifocal: pay for lenses in first pair only. Additional charge - Extra Options. Excludes safety eyewear. SKU 30397873. ©2019 Specsavers.