



Broxtowe
Borough
COUNCIL

Broxtowe matters

Summer 2021

In this issue



Go Green in 2021

Page 10



Thank you Broxtowe

Page 12



Meeting housing need

Page 14



Investing in Broxtowe

How we're investing in Broxtowe for the future – read more on page 6.



www.broxtowe.gov.uk

Local care from a local company

Call us on: **0115 9226116**

www.homeinstead.co.uk/Nottingham



Looking forward to better times

From the start of the pandemic, we have followed advice from Public Health England, and all our CAREGivers have been wearing PPE, including face masks, to all visits. Also, we introduced strict hygiene processes and weekly testing to reduce the risk of infection or transmission.

We always thought that we had some of the best CAREGivers in Nottingham, and this pandemic has confirmed this to be true. They have been fantastic despite having to keep their distance from those they care for and know very well. They have gone out of their way to go shopping, wash hair, cut nails, collect prescriptions, and do many things not typically within their remit or done by others.

After some challenging month's we decided it was time to say THANK YOU for all their commitment and dedication. At the end of the second lockdown, maintaining adequate distance and observing hygiene rules, we had over 40 CAREGivers who, throughout the day, came to our open day. It was great for everybody to see each other (behind masks!) after such a long time, share all the challenges, the good and not so good, and know that they are still part of the Home Instead family.

That was a long time ago, and we are now eagerly waiting for restrictions to lift in the next step of unlocking. We will then once again celebrate with our wonderful CAREGivers and Clients and look forward to better times.



Healthcare at Home

Our Clients have faced many challenges during recent months; one was the time taken for doctors and district nurses to attend their homes.

Whether it was for wound care, urine tests, catheter care or a home visit, the time between request and visit increased considerably. This was and will continue to be a challenge due to the high demand for scarce resources.

These activities have traditionally been carried out by health, not care professionals. To ensure a better service to our Clients, we have now employed a qualified nurse with over 30 years of experience gained at the QMC and the East Midlands Emergency Service, among other health organisations.

We can now train some of our CAREGivers and offer additional services without the increased waiting time. We believe this will have a very positive effect and help reduce potential hospital admissions.

Celebrating 100 years!

Gladys celebrated her 100th birthday in the company of family, neighbours, many friends and Marie and Julia; two of her CAREGivers.



We started supporting Gladys over four years ago when her family contacted us. Gladys was in hospital following a fall, and as her relatives live away, we provided day to day support.

Marie, one of her CAREGivers, was introduced right at the start and has now developed a very close relationship. Our CAREGivers ensure that Gladys is healthy and happy.

Gladys was not short on cards, gifts and surprises, and as the weather was kind, her garden was the place to be.

We wish Gladys our best and look forward to her next birthday party.



Dementia Friendly Communities - Home Instead Workshops

Research suggests that Dementia affects each individual in different ways however, even at late stages a person can understand what is going on around them. This in turn means that many people with Dementia can continue to live a relatively "normal" life as long as there is adequate support available, not just at home but in the community. This is where Dementia friendly communities can play a major part.

The concept is simple: to improve the quality of life for people with dementia and help them to become active members of the community.

At Home Instead in Nottingham, we have developed a comprehensive training program for our CAREGivers which covers all the aspects of Dementia and provides practical advice and techniques to help those suffering from the disease to continue to enjoy a good quality of life.

Part of this training is now being delivered as **free workshops** for families of those suffering from Alzheimer's and other Dementias or anybody who would like to **find out more about the disease**. If you would like to attend one of our seminars please contact us on 0115 9226116 or email: primo.sule@homeinstead.co.uk

We are looking for CAREGivers who can help us to assist people with services such as

Companionship, Home Help and Personal Care in their own home.

Please call **0115 9226116**

email to recruitment.nottingham@homeinstead.co.uk



HOMECARE THAT'S GOOD ENOUGH FOR THE QUEEN!

We are delighted to receive the Queen's Award for Innovation in recognition of our quality care



Getting in touch

Web visit www.broxtowe.gov.uk to pay and apply for services online

Email customerservices@broxtowe.gov.uk

Call 0115 917 7777 other useful contacts can be found on the back page



/broxtoweboroughcouncil



@broxtowebc



/BroxtoweBC



Never miss out

Stay up to date by signing up to our free email newsletters and choose what you want to be kept informed about.

Sign up now at www.broxtowe.gov.uk/emailme

Editorial: Broxtowe Borough Council's Corporate Communications Team

Print: Systematic Print Management

Distribution: Royal Mail

Cost: 18p per copy

Broxtowe Matters is printed on environmentally friendly paper, please recycle it after reading.

Advertising is sourced by Spot On Media Ltd and the Council does not endorse any of the products or services advertised.

We welcome your comments and views – just get in touch at press@broxtowe.gov.uk or call 0115 917 3825.

Also in this issue...

Our Achievements
P4 - 5



Housing
P14 - 15



Looking ahead
P6 - 8



Environment
P16 - 17



Business Growth
P9 - 10



Community Safety
P18 - 19



Health:
P11



Community News
P20



Thank You Special
P12 - 13



Useful Contacts
Back Cover



Introduction

2020 worked out very differently from what we all imagined but thanks to your support, we were still able to make some great progress on making Broxtowe a greener, safer, healthier Borough, where everyone prospers.

From town centre developments and new homes to tree planting and support for mental health, you can read more about our achievements over the last 12 months on the next pages.

We are now at a point where the future looks a little brighter again and there is a great deal going on in Broxtowe to be excited about. The new cinema in Beeston opened in May, with food and drink retailers poised to open on the site later in the year and we have recently received news that £21.1million of funding has been approved for Stapleford as part of the Government's Towns Deal Fund.

On Page 6, you can read more about these and other investment projects in the north of the Borough designed to encourage sustainable growth in the area for generations of residents and businesses to benefit from.

Work continues on our pledge to reduce our carbon emissions to net zero by 2027. Changes we have seen to our way of life as a result of the pandemic have had many positive impacts on the environment, so we have a real opportunity to rebuild more sustainably, rather than go back to the way things were in this area. Turn to Page 16 to find out how you can go green in 2021.

The last 18 months have been very challenging for us all but we have been moved by the level of community support present in the Borough. On Page 12, you can read more about some of the wonderful things that local people have done to 'do their bit.' From the bottom of our hearts, thank you to each and everyone one of you who has made everyday sacrifices to keep others safe or gone out of your way to help others.



Ruth Hyde OBE
Chief Executive



Councillor Milan Radulovic MBE,
Leader of the Council



Councillor Steve Carr, Deputy Leader of the Council





Our Achievements

A greener, safer, healthier Broxtowe where everyone prospers



Housing



AIM: A good quality home for everyone

- Planning permission secured for **132** new homes in Beeston Square as part of town centre redevelopment plans.
- New strategies to **reduce the carbon emissions** of our homes.
- Increased our temporary accommodation units to **16**.
- 2** dementia friendly bungalows completed, **5** flats for ex service personnel in progress, **9** buybacks of former Council properties and consultations on other possible sites.
- Top quartile** for rent arrears and **180** referrals to our Financial Inclusion Service.

Business Growth

AIM: Invest in our towns and our people



- Beeston cinema **now open** with serious interest in all available food and beverage outlets. **New public realm** opened and **public toilets** being developed.

- Bid for up to **£25m** investment in Stapleford submitted to Government as part of the Town Deal Bid and a new business hub opened.
- Plans being developed to secure external funding for **investment plans** in **Eastwood** and **Kimberley**.
- £198,000** funding from D2N2 LEP Growth Fund and the Council for **two new industrial units** at Mushroom Farm.
- Apprentices target exceeded as part of our Apprenticeship Strategy with **11** apprentices in training with the Council.
- Working to become a **Disability Confident Leader** under the Disability Confident Scheme.



Environment

AIM: Protect the environment for the future

- New 15 strand **Climate Change Strategy** including work with the University of Nottingham to engage local people.
- Over **500** families signed up to the Go Green Challenge.
- New **Air Quality Action Plan**.
- £212,500** play area improvements across the Borough thanks to Council and external funding, including an upcoming **£128,500** scheme at Dovecote Lane Recreation Ground, Beeston.
- 3,111** trees planted as part of our commitment to plant 2,500 new trees each year.



Community Safety

AIM: A safe place for everyone

- New action plans introduced including **Knife Crime**, **Anti-Social Behaviour** and **Children and Young People**.
- Continued progress on our **White Ribbon Campaign Action Plan** and new **Sanctuary Policy** to help those who are at risk of domestic abuse stay safe in their homes.
- New Public Spaces Protection Order** to control vehicle nuisance in Eastwood.
- 6** existing Public Spaces Protection Orders consolidated into one new order, with **two new areas** added in Beeston.
- CCTV **fully reviewed** to ensure the system remains effective at preventing and reducing crime.



Health

AIM: Support people to live well

- New **online directory** signposting to health and wellbeing services.
- New **Leisure Facilities Strategy** in progress with a range of options being considered, before plans can be developed for **new leisure centres**.
- £35,000** funding towards the Eastwood Mental Health Hub.
- New scheme to provide **vouchers for support sessions** for those affected by Dementia.
- Refreshed **Mental Health Action Plan** and new **Employee Mental Health Action Plan**.



RESPONDING TO COVID-19

- £532,474** to support people to pay their Council Tax, in addition to the **2,909** working age people who already receive **100%** Council Tax Support.
- 10,000** vulnerable people contacted to offer help and support.
- £74,000** emergency funding for voluntary groups.
- £30k raised** and **400 food hampers** delivered thanks to donations to two community appeals.
- 12** people previously living on the streets or requiring emergency accommodation housed as part of the Everyone In Scheme.
- £28.9M** Business Support Grants paid (up to end March 2021).
- £63,434** discretionary funding to support businesses and voluntary groups to maintain operations.
- Regular updates signposting to important information including printed newsletters to **50,000 properties** and weekly electronic newsletters to **20,000 residents and businesses**.
- Continued **all bin collections** for residual, recycling, glass and garden waste.
- Online classes** available to Leisure members.





Looking ahead... Town investment

Eastwood

Mushroom Farm



Two new industrial units have been constructed as part of a £198,000 investment from Broxtowe Borough Council and D2N2 LEP via the Local Growth Fund. The light industrial units, at the Council owned Mushroom Farm Court site on Meadow Bank Way, will be similar to the seven existing units on site. As well as providing space for businesses and new jobs, over £1million of gross value is expected to be added over ten years.

Nottingham 26

Nottingham 26 is a new 55 acre industrial development offering flexible building space. The site is located to the west of Eastwood town centre.

WiFi

New Town Centre Wi-Fi has been installed.

Town Investment Plan

The Council hopes to secure up to £20m of external funding to invest in the town, from the Government's Levelling Up fund. Priorities for this have been informed by a consultation carried out by Eastwood Town Council earlier in the year and a stakeholder meeting has also been held to help inform proposals.

Find out more: www.broxtowe.gov.uk/eastwood

Beeston

The Square Phase 1

The area was refurbished in 2015 to create a revitalised shopping area to encourage the night time economy. Businesses have also been able to benefit from a Business Hub.

The Square Phase 2

The Arc Cinema opened to the public in May, including 700 luxury leather electric reclining seats, laser digital projection and Dolby Digital 7.1 surround sound in 6 of its 8 screens. Plus giant Hypersense format in the remaining 2 screens. Local resident, Caroline Smith has been appointed manager with a team of 20 working to deliver a great cinema experience for local people. The cinema will show the latest blockbuster and independent films as well as broadcast screenings of opera, ballet and theatrical productions.

Access for all is key to The Arc Cinema's offer with all screens wheelchair accessible and subtitled screenings, kids' clubs and parent and baby screenings part of the offer. There is also a café and a bar plus all the screens are licensed so you can enjoy a beer or glass of wine while watching the film.

The Council is in discussions with a number of food and drink retailers about securing a unit within the development and we hope to be able to announce our new tenants shortly

See what films are showing at www.arccinema.co.uk



Street Art

Commissioned in the town centre to celebrate Beeston's creativity, including two large pieces commissioned by the Council. A new Art Trail to celebrate key workers who supported us during the pandemic has also been installed – read more about this on page 13.

Tram

The tram extension opened in 2015, connecting Beeston to surrounding areas, the university campus, QMC, Nottingham City Centre and the Tram Park and Ride near to Junction 25 of the M1 Motorway.

Car Parking

New 62 space car park at Technology Drive with blue badge parking, electric vehicle charging points and dedicated bicycle storage.

Find out more: www.broxtowe.gov.uk/beeston

JOHN FLYNN
OPTICIAN
ESTD.1938

WE ARE
OPEN
AS (NEW) NORMAL

SPECIALIST
GLASSES
FOR PEOPLE
WITH

AMD
(MACULAR DEGENERATION)
GLAUCOMA
CATARACT
AND OTHER
RETINAL PROBLEMS

Now official stockists of **Lindberg** – the best eyewear in the world



L I N D B E R G



götti
SWITZERLAND

We are now stocking
**Götti Dimension
3D Printed Frames** -
lightweight and durable
by **Götti,
Switzerland**



HOYA



We only supply the best quality lenses from **Nikon, Hoya, Zeiss** and many other superior independent lens suppliers including the **WORLD'S THINNEST** lens 1.76 INDEX!!

Eye Examinations carried out by **Dr Sheeraz Janjua** BSc(Hons) DipSv MCOptom DOptom Director & Doctor of Optometry
Opticians Awards Finalist - Optometrist of the Year 2018 Opticians Awards Finalist - Independent Practice of the Year 2019

REGISTERING NEW PATIENTS

Open Monday to Friday from 9am to 5.30pm. Saturday 9am to 5pm

John Flynn Opticians welcomes the registration of new patients and parking is available in the practice's own car park.

Telephone **0115 925 5051** to make an appointment. enquiries@johnflynnopticians.co.uk www.johnflynnopticians.co.uk



Want to stay up to date with the latest news and arrivals? why not follow us on **Instagram** and **Facebook @johnflynnopticians**

0115 925 5051



1a Devonshire Avenue, Beeston, Nottingham. NG9 1BS



Stapleford

Stapleford Town Deal

£21.1million of funding has been secured as part of the Government's Towns Fund Deal. The proposed developments include a community leisure hub, cycle 'super highway', safer roads, an enterprise hub, a COVID-19 town centre recovery grant scheme and an adult learning and skills centre.

Stapleford Business Hub

Following the success of the Beeston Business Hub, a Stapleford Business Hub with nine new offices has opened in the former Police Station Building thanks to £92,135 of funding from the D2N2 LEP Local Growth Fund. Enquiries can be made to estates@broxtowe.gov.uk

WiFi

Town Centre WiFi has been available since 2017.

Market

A new weekly market has been introduced at Walter Parker Square following feedback from local residents.



Find out more: www.broxtowe.gov.uk/stapleford



Kimberley

New market

A new market is being planned to help bring additional goods to local people, increase footfall in the town and support local business.

WiFi

New Town Centre Wi-Fi has been installed.

Town Investment Plan

The Council hopes to secure external funding for investment in the town from the Government's Levelling Up fund. A resident consultation was recently run to help inform proposals.

Find out more: www.broxtowe.gov.uk/kimberley

Across all of our towns

- Electric vehicle charging points installed in many town centre car parks. Find your nearest at www.broxtowe.gov.uk/electricvehiclecharging
- 12 car parks awarded Park Mark status as part of our commitment to reduce crime and anti-social behaviour.
- Over £1.1 million park improvements have taken place over the last few years as part of our Pride in Parks scheme. Find out more at www.broxtowe.gov.uk/parks





New jobs and connections to boost Broxtowe economy

The economy of Broxtowe could receive a major boost thanks to three major developments planned by the East Midlands Development Corporation.

The developments will deliver 84,000 jobs, contribute £4.8bn a year to the East Midlands' economy and create green spaces.



They include:

- A 'Garden of Innovation' in Toton and Chetwynd - a new sustainable community, providing homes, jobs and a National Skills Academy.
- Ratcliffe-on-Soar power station would be transformed into an international centre for the development of zero carbon technology.
- The creation of the UK's first inland freeport at East Midlands Airport.

Broxtowe Borough Council is a key partner of the East Midlands Development Corporation, alongside other local authorities. We are helping fund the development of these life-changing plans to ensure it receives the £235m Government funding it needs to transform our Borough for the future.

What are the benefits to Broxtowe?

More jobs
More housing
Better transport
Enhanced green spaces

- Planned closure of Chetwynd Army Barracks provides an opportunity to create green spaces and connect communities that have previously been separated.
- 'Garden of Innovation' will preserve the area's existing green spaces and heritage and create a new world-class zero-carbon sustainable community, providing 4,500 homes.
- National Skills Academy, providing thousands of new training and job opportunities for people locally and regionally.
- Green spaces with cycle and walking paths, enhancing the natural environment and making places like the Bennerley Viaduct accessible again.
- Better transport links to and from the Borough thanks to the proposed HS2 hub station, major improvements of M1 Junction 25 and the A52.
- The Nottingham Express Transit (NET) Tram route will be extended to connect with the planned Toton hub station, with new innovative transport connections that transform accessibility locally and regionally.
- Protecting and enhancing the environment by investing in the development of green technologies and ensuring that all projects pave the way to a zero-carbon future.



For more information, visit www.broxtowe.gov.uk/developmentcorporation



SHOP LOCAL SUPPORT BROXTOWE

Broxtowe businesses need
your support.

Please consider shopping locally
wherever possible.

Do you need help to get into Work, Education or Training?

Building Better Opportunities is a Lottery and European funded programme that is offering support to people who are unemployed or economically inactive living in Nottinghamshire or Derbyshire. We are working in this area to help and support local people into work, education or training or to improve your financial resilience.

Towards Work is for those with barriers to work and offers a work coach to help you move towards your future goals. Find out more and refer yourself on the website www.towardswork.org.uk/make-a-referral

Opportunity and Change is for people with multiple needs including those with mental health problems, or who have experienced drug problems. To find out more have a look on the website www.opportunityandchange.org. Refer by email to opportunityandchange@frameworkha.org.



Money Sorted provides personal navigators to help you improve financial resilience. To find out more visit the website www.moneysortedind2n2.org to refer drop an email to info@moneysortedind2n2.org and we will be in contact with you.

Look on the websites for real stories of how we have helped people to overcome barriers to work and education. Get in touch to see how we can help you to change your life!



Live Well Online Directory

Health is something that many of us are taking more seriously than we did before the pandemic so the Council has created a new 'Live Well' online directory to signpost to support and partner organisations.

The directory includes all aspects of health including eating well, getting active, mental health, dementia, stopping smoking, financial health, domestic abuse support, volunteering and meeting people.

Local groups can also add their details for residents to find.

Find out more at www.broxtowe.gov.uk/livewell

Free support to help you improve your health

Now that restrictions are easing, start a fresh on your journey to a healthier, more active you.

Free support is available from Your Health, Your Way to help Nottinghamshire residents (excluding Nottingham City) to lose weight, get more active, eat healthier, drink less and quit smoking.

Services include:

- Realistic 12-week weight management programmes for adults, families and maternity patients.
- Physical activity sessions for over 18s including 1:1 or group sessions, gym based exercise groups, online and digital support, couch to 5k/walks and outdoors sessions at Bramcote Hill Park.
- Friendly stop smoking advisors offering 1-1 and drop in sessions, as well as phone and digital support.
- Support to reduce your alcohol intake for over 18s

All interventions are free and are with the support of our friendly and encouraging advisors.

For more information or to make a quick, easy self-referral visit www.yourhealthnotts.co.uk or call us on **0115 772 2515**. Make sure to follow us on social media for live workouts, videos, recipes, and tips!



Have you picked up your Active at Home guide?



Booklets encouraging people to be active at home have been distributed to vaccination hubs in Nottinghamshire recently.

Even as restrictions continue to ease, this is a handy guide to simple activities that can be done at home, in limited space and with no equipment, along with tips to improve mental health.

You can view and download the guide at www.activenotts.org.uk/news/2021/02/active-at-home-guides

Nottingham and Nottinghamshire Active at Home

A guide to staying active at home during the coronavirus outbreak





Thank you Broxtowe



Mayor of Broxtowe 2021/22,
Councillor Richard MacRae

Broxtowe, as always, has remained a compassionate place during the pandemic, where we look out for each other and help those in need. Groups and individuals across the Borough have done their very best to care for those who are more vulnerable in our society.

Whilst the Mayor has been unable to carry out face to face visits, we have been sending Mayor's Certificates of Appreciation to local residents and groups who we have been contacted about for the amazing work they have done to support our community recently.

Here are some of the people who have been recognised so far.

★ **Katie Wright** ★

For her fundraising efforts for the NHS and running virtual dancing classes to support community wellbeing.

★ **Steve Robinson-Day** ★

In recognition of his work to set up self-help groups in Kimberley and providing marvellous support to the community during the pandemic.

★ **Sandra Doyle** ★

For the running of daily exercise classes during the pandemic to keep everyone healthy, whilst raising local community spirit.

★ **Sue Stack** ★

For organising lunches to be delivered to households in Nuthall during the pandemic.

★ **Chris Ibbs** ★

In recognition of the meals he delivered to thousands of households in Eastwood during the pandemic.

★ **Eastwood Volunteer Bureau** ★

In recognition of their tremendous work in keeping the food bank open and feeding the vulnerable people facing financial hardship in Eastwood and surrounding areas.

★ **Paula Clarke** ★

For always working to keep spirits high and supporting others.

★ **Stapleford Community Group** ★

For their work to collect and distribute foods and clothing to people in need during the pandemic.

★ **Kerstine Herbert** ★

In recognition of her fundraising efforts for the Broxtowe Community Appeal by completing a 75km run and raising £400 to mark the 75th anniversary of VE Day.

★ **Macy Walker** ★

For her fundraising efforts for the Broxtowe Community Appeal.

★ **Beeston Muslim Centre** ★

In recognition of their work to encourage take up of the COVID-19 vaccine and supporting those in need with food packs.

★ **Church Members at Montrose Court** ★

For storing and sorting donations for Stapleford Community Group for their Christmas Community Appeal.

★ **Stapleford Fire Station** ★

For volunteering their time to support the Mayor's Christmas Appeal.

★ **Natalie Sisson**

For her dedication to students at Brinsley Primary School, as well as the wider community during the pandemic.

★ **Linda Duly** ★

For going out litter picking around the Erewash Valley Trail.

★ **Reverend Mick Forsyth** ★

In recognition of his work supporting children and their families on the Inham Nook and Eskdale estates during the pandemic.

★ **Sharon Hands** ★

In recognition of her amazing fundraising efforts in Stapleford

★ **Richard Ward** ★

For his work to support people in Chilwell, including setting up and managing a food bank and working on a bid to create a community café.

★ **Sonia Sisson** ★

In recognition of her work collecting and delivering food to Eastwood and Brinsley food banks.

★ **Jo Ward** ★

For keeping the Beeston and Chilwell Girlguiding division connected during the pandemic.

★ **Tina Leggat** ★

For crocheting 800 poppies for Remembrance Sunday.

★ **Andrew Bunyan** ★

In recognition of his work to ensure safe activities and support have continued for Beeston Boys Brigade during the pandemic.

★ **Kathryn and David Boam** ★

In recognition of their efforts to create and maintain a community hub for people in Eastwood and the surrounding area.

★ **Karen Jowett** ★

In recognition of her work to ensure safe activities and support have continued for the Beeston Girls Brigade during the pandemic.

★ **Sharon Dewick** ★

For her work to promote and adapt the Nottingham Country Market to meet COVID-19 restrictions and support local businesses.

★ **Ivan Greensmith** ★

In recognition of his work to provide hot meals to vulnerable people during the pandemic.

★ **Sue Paterson** ★

For her efforts to support local people who were unable to get out and about during the pandemic.

★ **Raj Shergill** ★

For providing constant support to local people during the pandemic, always offering a smile and a kind word.





Supporting people with Learning Disabilities and Autism

Pulp Friction Community Interest Company (CIC) is a social enterprise based in Broxtowe who support people who have Learning Disabilities and/or Autism to develop social, independence and work-readiness skills.

The pandemic had a huge impact on the Learning Disability Community, members of which have a 6% higher risk of death than other groups from contracting the virus. Within that group, people aged 18-34 have a 30% higher risk of death.

The Pulp Friction Team have worked hard to keep our community safe including:

- Teaming up with the White Lion in Bramcote to deliver hot meals to people who needed a helping hand across Bramcote, Stapleford and Chilwell. Pulp Friction members were involved in delivering some of these meals, as well as packaging and delivering food parcels to people who needed them.
- The Atmosphere Glee Choir have continued virtually, sharing online performances with community groups across the country, including as part of Broxtowe Borough Council's online Holocaust Memorial Day service.
- EveryDance2 have also continued to meet virtually and have taken part in a danceathon which raised over £1,500 for NHS Charities.

As lockdown eases, they are looking forward to "getting back out there" with new and existing community activities.

Find out more at <https://pulpfrictionsmoothies.org.uk/> or find them on Facebook @PulpFrictionCIC

Nottinghamshire Fire and Rescue Service

Employees and firefighters from Nottinghamshire Fire and Rescue Service have stepped up to the challenge to help in any way they can.

This has included:

- Delivering 12,000 food and medication parcels to the most vulnerable.
- Picking up the phone to talk to someone in need
- Supporting East Midlands Ambulance Service with its Urgent Care function.
- Helping with the administration of COVID-19 vaccination programme.
- Assisting with the community testing programme.

The efforts the Service is going to in keeping our communities safe is above and beyond and we are proud of everyone for coming together to help fight the virus.

Beeston's all-star cast honoured in art trail

Portraits to represent key workers - ranging from NHS staff to shop workers have been displayed in various parts of the town centre as a thank you for all their hard work during the COVID-19 pandemic.

The project is part of a series of events to mark the opening of the new cinema and redevelopment of the town centre.

Find out more about our #BeestonAllStars at www.broxtowe.gov.uk/beestonallstartrail





Housing Delivery

Our Housing Delivery Plan is designed to help us meet social and affordable housing need.

The plan will see a minimum of 230 new council homes built in the Borough by 2029, on land, some of which the Council owns, including brownfield, under-utilised and derelict sites.

Resident consultation has been at the heart of the plans to make sure that local people have been able to share their views about the proposals.

Here's how the plan is progressing so far:

Dementia Bungalows

Two new dementia friendly bungalows have been completed, adding to the existing dementia friendly homes in Beeston and Eastwood.

The bungalows, have been specially designed to support the needs of those affected by dementia and their carers, including appropriate layout, decoration and practical considerations like mobility scooter charging and storage and garden space.

The properties have also been built to high energy efficiency standards and include photovoltaic panels and air source heat pumps with under floor heating.

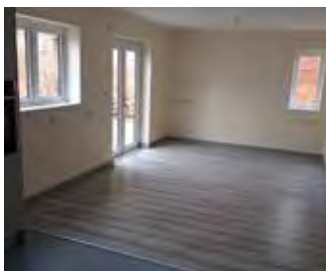
Ex Service Personnel Accommodation, Oakfield Road, Stapleford

Following consultation with the local community, work has begun on the construction of five, one bedroom homes on the garage site between 71 and 83 Oakfield Road.

The flats are due to be completed by the end of the year and have been designed to help ex-service personnel access adequate housing. The Council is also working with Forces In The Community to ensure that bespoke support is provided.

Chilwell/Watnall Garage Sites

Several garage sites have been identified to be developed. A resident consultation has been carried out on five of these sites at Felton Close, Gayrigg Court, Barn Croft and Selside Court, Chilwell and Chilton Drive, Watnall. Following a thorough review of the comments, it is anticipated that planning applications will be submitted later in 2021 for around 21 new homes.



Dementia Bungalows

Fishpond Cottage, Bramcote

Following a consultation with local residents, a planning application has been submitted for two houses, one wheelchair family bungalow and two flats. The application does not propose to demolish the cottage. If approved, work could start on site later in 2021.

Bramcote Crematorium

The Council is in negotiations with a local house builder to build 30 new rented homes and 16 shared ownership homes on land to the west of Coventry Lane, Bramcote. Subject to a successful conclusion to the negotiations, it is anticipated that a reserved matters approval for the affordable housing will be submitted later this year.

Acquisition of existing properties (Buy Backs)

Nine former right to buy properties have been bought back since April 2020, with several more in the pipeline. Once back in Council ownership, the properties can be used to provide housing for those on the Council's housing waiting list.

If you would like to discuss your own property, please contact the Housing Acquisitions Officer on 0115 917 3623 or email acquistions@broxtowe.gov.uk



Damp proof your home

Usual household activities produce moisture, which can lead to damp surfaces in your home. The good news is that there are some things you can do to help prevent this.

Bathroom and kitchen

- Keep trickle vents open.
- Open windows and use an extractor when bathing, showering or cooking.
- Keep the door shut during and after bathing, showering or cooking.
- Cover boiling pans.

Drying Clothes

- Try not to dry clothes indoors. If you need to, open the window and close the door to the room.
- Make sure tumble dryer vents are directed to the outside.



Heating

- Keep radiators clear of furniture and obstructions.
- Try and maintain an even indoor temperature.
- Use central heating rather than gas fires where possible.
- Use your radiator valves to control the temperature of individual rooms.
- Don't use portable gas or paraffin heaters.

Being a good neighbour

We know that the majority of our residents are respectful of their community and their neighbours, but there is a small minority of people that cause nuisance and are anti-social towards others. If you are having problems with people who live near you, please do not suffer in silence, the Council can provide you with help and assistance.

If the person is a Council tenant, they may be in breach of their tenancy conditions. If you wish to discuss a problem with a Council tenant, then speaking to a Housing Officer is the best place to start. We will listen to the problems you are experiencing and provide you with advice on the action we can take and what you can do to help us to do this. We will not disclose who has reported the matter when we speak to the alleged perpetrators.

If the concern is about criminal behaviour, including drugs, we will ask you to report these to the Police and we will work in partnership with them.

The Council does not tolerate anti-social or criminal behaviour by our tenants.

All Council tenants are responsible for the behaviour of the people who live with them and any visitors to their home. Any behaviour which will, is likely to, or is capable of causing a nuisance and/or annoyance to your neighbours is a breach of your tenancy conditions.

If you would like to speak to one of the Council's Housing Officers, then please contact the Tenancy and Estates Team on **0115 917 3400** or housing@broxtowe.gov.uk

Energy Performance Certificates

Much like the multi-coloured sticker on new appliances, Energy Performance Certificates (EPCs) tell you how energy efficient a building is and give it a rating from A (very efficient) to G (inefficient). They'll tell you how costly it will be to heat and light the property, and what its carbon dioxide emissions are likely to be.

A current EPC must be provided by the vendor if you are buying a property, or by the landlord / agent if you are renting a property.

If you wish to enquire if a property has an EPC, you can visit

<https://find-energy-certificate.digital.communities.gov.uk/>

From 1st April 2020, **all existing tenancies** are required to have a minimum EPC rating of 'E' or above.

If you are a tenant and your property has an EPC rating below E, you should speak with your landlord or agent in the first instance. If no improvements are made, you can contact Broxtowe Borough Council's Private Sector Housing Team at psh@broxtowe.gov.uk

For general home energy efficiency advice, including help with finding grants for energy saving and home improvement measures, contact Nottingham Energy Partnership at www.healthy-housing-service.com





Go Green in 2021 - What you can do

Sign up to our Go Green Challenge



The Thresher Family in Beeston have completed the challenge, including three year old Leo, who says he wants to help protect the earth.

More than 600 people have signed up to our Go Green Challenge so far, to inspire residents to reduce, reuse and recycle more than ever before and help us protect the environment for the future.

You can sign up to receive a weekly email over six weeks to help you reduce waste, reuse more and recycle like a pro. You will also find that by reducing, reusing and recycling more you could see some benefits to your health and your bank balance too!

Find out more at www.broxtowe.gov.uk/gogreenchallenge

FREE 1st time gas central heating!



Through the Warm Homes Hub as a Broxtowe resident, you could benefit from a fully funded gas connection and a brand-new central heating system in your home - just like Mrs T and her mum (pictured).

As well as improving the comfort of their homes, by switching to gas, together the pair has saved up to £14,700 on the install and annual energy bills! If your property is heated by portable space heaters such as an electric storage heater, electric panel heaters, gas room heaters, solid fuel fire or a gas fire, then you could be eligible for an upgrade! Get in touch with the Warm Homes Hub team to find out more – call **0115 985 3000** or head to warmhomeshub.com/apply.

Other ideas

Saving water - Save Water with Severn Trent Water's free water saving products www.stwater.co.uk/wonderful-on-tap/save-water/free-ways-to-save/

Businesses - Find out how your workplace can reduce carbon emissions www.carbontrust.com/resources

Other ideas

Getting started - Try the WWF Carbon Footprint Calculator to see what your current footprint is and how you could reduce it
<https://footprint.wwf.org.uk>

Recycling right - Make sure you're recycling your waste correctly
www.broxtowe.gov.uk/recycling

Schools - Get ideas on reducing your school's carbon emissions at
www.eco-schools.org.uk

Saving water - Save Water with Severn Trent Water's free water saving products
www.stwater.co.uk/wonderful-on-tap/save-water/free-ways-to-save/

Businesses - Find out how your workplace can reduce carbon emissions www.carbontrust.com/resources



Go Green Challenge: Week One

Welcome

Welcome to the Go Green Challenge! You have already taken the first step into being more environmentally friendly just by signing up to the challenge and reading this bulletin today.

Each week, we will be challenging you and your family to make changes to the way you shop for and use items, as well as tips on how you can reuse and recycle them too.

We know that many of you are homeschooling at the moment or looking for activities to do as a family whilst we need to stay at home.



Climate change is in the national curriculum as part of science and geography in both primary and secondary schools, so the Go Green Challenge is a great way to teach your children about this important topic, spend some quality time together and make a real difference to the environment.

If you can't wait for the challenges, why not take a look at our Community Resource Pack for inspiration.



Community Clean-up Join the team



Join our Community Clean Team to help us make Broxtowe a cleaner place
Download your resource pack at www.broxtowe.gov.uk/cleanandgreen

Join our Community Clean Team

We are asking individuals, community groups, schools and businesses to take collective responsibility for keeping the Borough clean and tidy and encourage everyone to recycle more.

If you'd like to organise an event and join the 20 families who are already regularly helping their local environment, we can help by loaning equipment. We will also arrange the collection of the waste when the event is finished.



Jane Philips litter picks around George Spencer school

Resource pack

You can download our useful resource pack which provides everything you need to organise your event including:

- Checklists for running a litter pick.
- A risk assessment to help ensure you keep safe whilst doing your bit (this can be tailored for your group's safety).
- Posters and social media graphics to use to promote the fantastic work you're doing.
- Template press releases for you to use to promote your event.

Visit www.broxtowe.gov.uk/cleanandgreen to get yours.

If you'd like to organise an event, contact our Waste and Recycling Team on 0115 917 7777 or email recycling@broxtowe.gov.uk. Once the details are set, we can loan you the equipment.

Together, we can make Broxtowe a cleaner and greener place to live.



Five year old Mia, from Newthorpe, loves helping us keep the Borough clean and tidy

" It makes you feel like you are helping in a small way "

Mary Penfold regularly litter picks around the Watnall area.

"I noticed whilst out running and dog walking the amount of litter that had been left around the local area, especially in the lanes. I made contact with Council about carrying out regular litter picks to keep the area looking clean for myself and for others to appreciate. I was brought up as a child to take my rubbish home with me or use the bins provided and this has always stayed with me. I hate seeing local roads/areas spoilt by other people. I would encourage anyone who has been thinking about collecting litter to contact the Council and get picking! I have had lots of positive comments whilst I've been out and about and several enquiries about how to get involved, so I think people in general want to help."



Charity reflects on 20 years supporting Broxtowe's women

Broxtowe Women's Project (BWP) marks its 20th birthday this summer, giving it an opportunity to reflect on the many women and families it has helped through its specialist domestic abuse services.

In 1991, its founder, Andrea Lucy-Hirst's vision was for a local, accessible service that listened to the needs of individual women, using their experiences to develop the best services for them.

After a year where many more women have suffered and reported abuse, BWP has proven this very flexibility; meeting the needs of victims by moving its one-to-one Outreach Services and support groups online, providing more support by email, and increasing its focus on mental health. It's also helped

businesses support staff affected by domestic abuse, particularly while working from home.

Meanwhile, BWP's kind volunteers concentrated on the wellbeing of women and families in a time of great need; providing practical support through wellbeing packages, and more children are being helped thanks to a growing Children's Outreach service.

This summer, BWP is encouraging Broxtowe residents to host 20th birthday fundraising afternoon tea events with family and friends so it can continue its incredible work for the next 20 years.

To get involved call **01773 718555** or email enquiries@broxtowewp.org



Don't let your BBQ end in food poisoning

It is estimated that there are 1,000,000 cases of food poisoning reported in the UK each year, with a rise in summer months. Here are five easy tips for staying safe when cooking on the barbie:

1. Wash your hands thoroughly before cooking and eating. Wash your utensils and serving dishes in between use and be careful not to mix dishes which have contained raw food and cooked food.
2. Defrost your food in the fridge, NOT at room temperature and ensure it's fully defrosted before cooking. Cool food at room temperature before putting in the fridge but make sure it goes in the fridge within two hours.
3. Cook food at the right temperature and for the correct length of time to ensure that any harmful bacteria are killed. Turn meat regularly and move it around the barbecue to cook it evenly.
4. When applying a marinade to meat, be careful. Don't baste partially or fully cooked meat with a marinade that has been used on raw meat, as this can lead to cross-contamination.
5. Always check that meat juices run clear and that no pink meat is visible when cutting through the thickest part - charred on the outside doesn't mean cooked on the inside!

Working together to reduce crime

Here are a few tips to keep you and your property safe during the summer months:

Before you go on holiday

- Make your home look lived in and ask a trusted person to check in.
- Avoid discussing holiday plans where strangers may hear or posting about them on social media

In your garden

- Keep your shed in good condition, fittings should be bolted through the door and screws concealed, fit a shed alarm.
- Well positioned external lighting is a good way to deter intruders.
- Keep tools secure, they could be used to force entry into your home.
- Chain large items together and consider relocating valuable items within your home. Mark valuables with your postcode and house number.

At home

- Fit and use good quality locks on doors and windows.
- Keep keys away from windows and doors.
- Remember, if you can get into your home without your keys, so can a burglar.





Citizens Advice – here to support you



A recent survey of Citizens Advice Broxtowe clients, showed that at the time of going to print, 70% of all enquiries over the last year related to COVID-19, from physical health to a reduction in income. The most concerning was that 64% of those impacted by the pandemic felt their mental health had suffered.

Reassuringly, clients from the same study reported an average improvement of 50% when asked about feeling more supported and less isolated after seeking advice from the charity.

Neil Clurow from the charity said: “The age profile of our clients changed during 2020, with the majority of our clients being of working age. Many people who have never turned to the state or charities before needed a hand up for the first time. Our overriding reflection is that of the voluntary sector and local council working together to support local people during the pandemic. We were grateful for the emergency grants, including those from Broxtowe Borough Council that helped us adapt our services

enabling our dedicated staff and volunteers to continue to help people during these difficult times.”

The findings of the survey are being used to help Citizens Advice Broxtowe plan how it can best support the community recovery from the pandemic in partnership with other local service providers.

If anyone needs help with the problems they face, Citizens Advice Broxtowe can be contacted on the following numbers:

- **Adviseline: 0800 144 8848**
- **Textphone: 0800 144 8884**
- **Consumer Advice: 03454 040 506**
- **Debt Advice: 01773 768 363 (Eastwood area)
01159 173 802 (Beeston area)**
- **Universal Credit Help to Claim service:
Telephone: 0800 1448444**
- **Universal Credit Help to Claim Website:
www.citizensadvice.org.uk/helpclaim**



A Mental Wellbeing Hub is also run by Citizens Advice Broxtowe in conjunction with Nottinghamshire MIND and with support from Broxtowe Borough Council. The Hub includes programmes with dedicated advice workers.

For more information
contact Citizens Advice
Broxtowe on
01773 768 363.



Volunteering



Dementia Support

Beeston Memory Cafe is a local charity which supports people living with dementia and their carers by providing opportunities to meet together, socialise and participate in a wide range of activities.

Due to the current Coronavirus restrictions we are operating a booking system for people wishing to join our sessions, held at the Middle Street Resource Centre.

The Memory Cafe welcomes applications from people wishing to volunteer helping run our sessions and we are actively looking for new Trustees to extend the diversity and skills of the current team.

Please email: info@beestonmemorycafe.com or call **0796 039 8700** for more details.
www.beestonmemorycafe.com





Summer Reading Challenge 2021: Wild World Heroes at Inspire Libraries

Are your children ready to be Wild World Heroes? Take part in the Summer Reading Challenge at your local library from 10th July and find out!

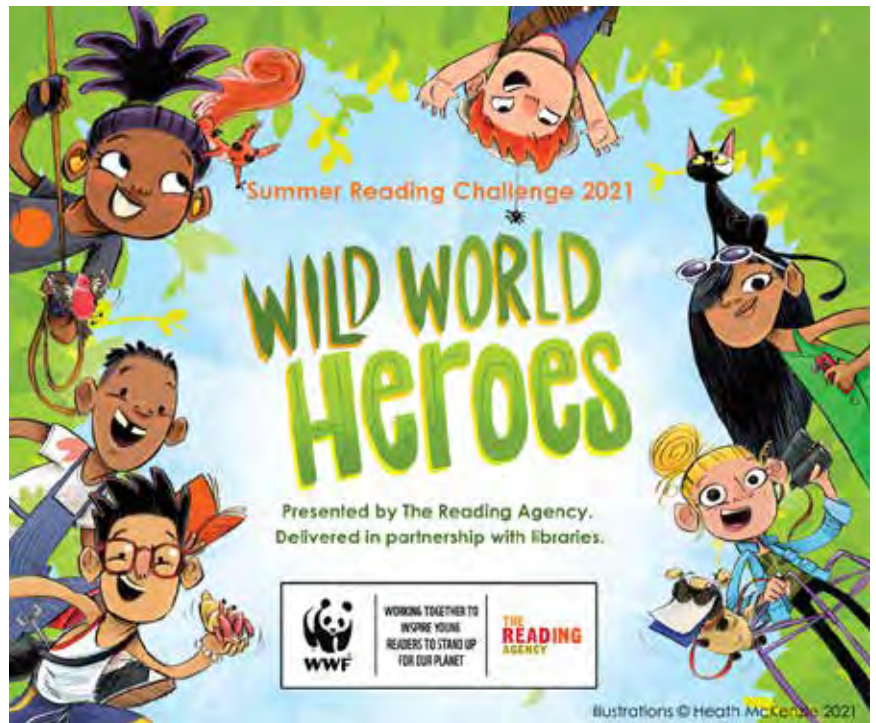
This year's challenge is in partnership with the World Wildlife Fund (WWF). Children head to Wilderville, joining the Wild World Heroes to help them make their town even better for the people and animals that live there.

It's completely free to take part. Children sign up at the library to pick up a collector folder, then read six library books to complete the challenge, collecting rewards (including some very stinky stickers!) along the way.

Children choose the books they want to read; stories, fact books, joke books, – all reading counts!

Wild World Heroes will be available in Beeston, Stapleford, Eastwood, Kimberley, Toton and Inham Nook libraries from 10th July until 5th September for children aged 4-11.

Produced by The Reading Agency and run in libraries across the country, the Summer Reading Challenge is a brilliant way to maintain children's reading enthusiasm throughout the summer break.



Find out more about the Summer Reading Challenge at www.inspireculture.org.uk/summerreadingchallenge

The Helpful Bureau is here to help

The Helpful Bureau is a registered charity who help people remain living safely and independently in their own homes. This includes:

- Practical services like gardening, decorating, sitting service, home support and handyman service.
- Befriending scheme where volunteers visit older people who may not have much contact with others.
- Volunteer transport scheme to take people to various appointments and social clubs. We also have a wheelchair accessible vehicle.
- Weekly resource centre providing movement to music classes, information, advice, a two course hot lunch, social activities and social groups like craft club, Grumpy Old Men club and monthly day trips.

There is also the opportunity to book foot care, held in our offices. We also signpost clients to other services available in our local area where they can get help with things that we are unable to specialise in.

Contact Emma for a chat on **0115 9491175** or visit The Helpful Bureau, Carnegie Centre, Warren Avenue, Stapleford, NG9 8EY.





Volunteering

Two's Company Befriending Service



Two's Company, is a phone befriending service which has been set up in

partnership with the national charity, Linking Lives UK, and aims to provide companionship to those most susceptible to isolation at this time, due to age, location, health or others factors.

The project makes use of vetted volunteers from St Mary's Church Eastwood and the wider community. These are people who desire to serve their community and who have received training as part of the project.

If you would like to make a referral or train to be a volunteer, please contact **jackie@transformingnottstogether.org.uk** or call **0756 6886 062**

Cancer Support

Do you have a couple of spare hours a week to support someone affected by cancer on a practical or emotional level? Perhaps you would like to support a group to do crafts or go walking? Perhaps you can teach people how to use the internet so they can become more independent? If you would like to volunteer with us, please get in touch on **0115 911 1662** or email **volunteering@selfhelp.org.uk**

You can also access support if you been affected by cancer. Emotional support, information and practical help for people living in Nottinghamshire - whatever your concern they can ensure you get the right support for you.

Contact them on **0115 911 1662** or email **referrals@selfhelp.org.uk**.

Beyond Diagnosis Gateway from Self Help UK in partnership with Macmillan Cancer Support
www.selfhelp.org.uk

In partnership with
**MACMILLAN
CANCER SUPPORT**



Volunteer Service

Recently taken over by Rushcliffe Community and Voluntary Service (RCVS), the Broxtowe Volunteer Centre is devoted to delivering a high standard of trusted services that anyone in the community can rely on in times of need.

Their volunteers are at the heart of the community and their work can make a difference to those facing disadvantage, isolation, or lack of independence to help overcome any difficulty that they may face.

Broxtowe Volunteer Centre believes in evoking change through action and encourages anyone who wants to help make their community a better place for all to contact **broxtowevolunteering@rushcliffecvs.org.uk** so they can find a suitable volunteering role for you.

Literacy Volunteers

Volunteers are needed to help primary school children with their reading and communication skills. Volunteers read and play word games with selected children on a one-to-one basis, to give them confidence and help them enjoy reading and communicating.

You need to be able to commit to visiting a school on the same morning or afternoon each week (for at least a year). Training and ongoing support is provided. Volunteers should like children, enjoy reading, be patient, flexible and reliable.

You will be vetted through the Disclosure and Barring Service.

If you are interested, please ring **0115 876 5474** or email **contact@literacyvolunteers.org.uk**.



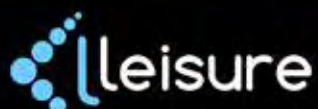
Visit the Meeting People and Community Life section of our Live Well directory for other volunteering opportunities **www.broxtowe.gov.uk/livewell**

GYM MEMBERSHIPS

- IMPROVE PHYSICAL HEALTH
- IMPROVE MENTAL HEALTH
- IMPROVE YOUR IMMUNE SYSTEM
- SWIMMING
- SPINNING
- CLASSES
- FOOTBALL
- BADMINTON
- LOW MONTHLY PRICES
- NO CONTRACTS
- ROLLING MEMBERSHIPS

COVID-SECURE
ENVIRONMENT

FEELING UNSURE?
BOOK A TOUR WITH
ONE OF OUR
EXPERT ADVISORS



BRAMCOTE • CHILWELL • KIMBERLEY • WWW.LLEISURE.CO.UK

Foster for Nottinghamshire

We're in great need of foster carers who can offer strength and stability to children and young people in need of loving and nurturing homes in Nottinghamshire.

Could you offer roots of stability to a child in need?



Find out more and see upcoming fostering information events on our website and Facebook page:

[nottinghamshire.gov.uk/fostertoday](https://www.nottinghamshire.gov.uk/fostertoday) [f FosterNotts](https://www.facebook.com/FosterNotts)

0115 804 4440

giving local children **roots**



Nottinghamshire
County Council

PERSONALISED CARE AND SUPPORT IN YOUR OWN HOME



CAREMARK
Broxtowe & Erewash
0115 943 6064



'Caring for others is our privilege'



- Support with daily routines
- Personal hygiene and care
 - Light housework
- Shopping and meal preparation
 - Companionship
- Attending appointments

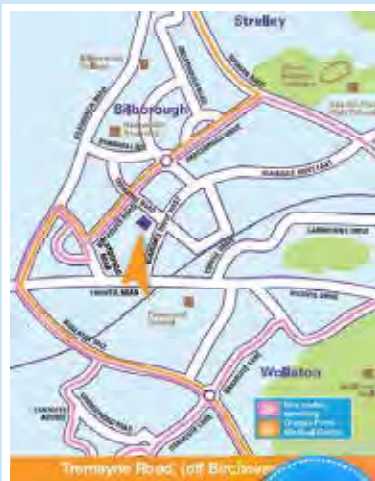
www.caremark.co.uk/locations/broxtowe-and-erewash

Need to See a Doctor? Grange Farm Medical Centre

**We are still accepting
New Patients**

This is a difficult time for all of us but we are doing our best to provide the best possible healthcare to patients. We want to reassure patients that we are here to help when you need us.

www.gfmc.org.uk



0115 8965 002



**17a Tremayne Road, Bilborough
Nottingham NG8 4HQ**

BARTON QUARTER
NOTTINGHAM

**Homes of traditional beauty
built for the modern age.**



Classical regency-inspired design, sprawling gardens, open spaces and walkways, how does that sound?

Find your ideal terraced property, triple aspect end of terrace house, villa, detached family home, detached apartment or mews apartment at

Barton Quarter Nottingham.

Prices from £335,000 to £525,000



Connecting People with Homes

www.fhpliving.co.uk 0115 841 1155

Useful addresses and telephone numbers

All above offices Tel 0115 917 7777 **www.broxtowe.gov.uk**

Daytime and out of hours **Tel 0115 917 7777**

www.broxtowe.gov.uk